
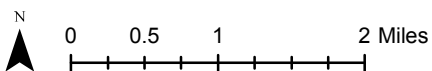


© OpenStreetMap (and) contributors, CC-BY-SA

Arlington UGA (Unincorporated Portion Only)

-  Selected Urban Growth Area (Unincorporated Portion)
-  Urban Growth Area (Unincorporated Portion)
-  City Limits (DOT 2013-05)

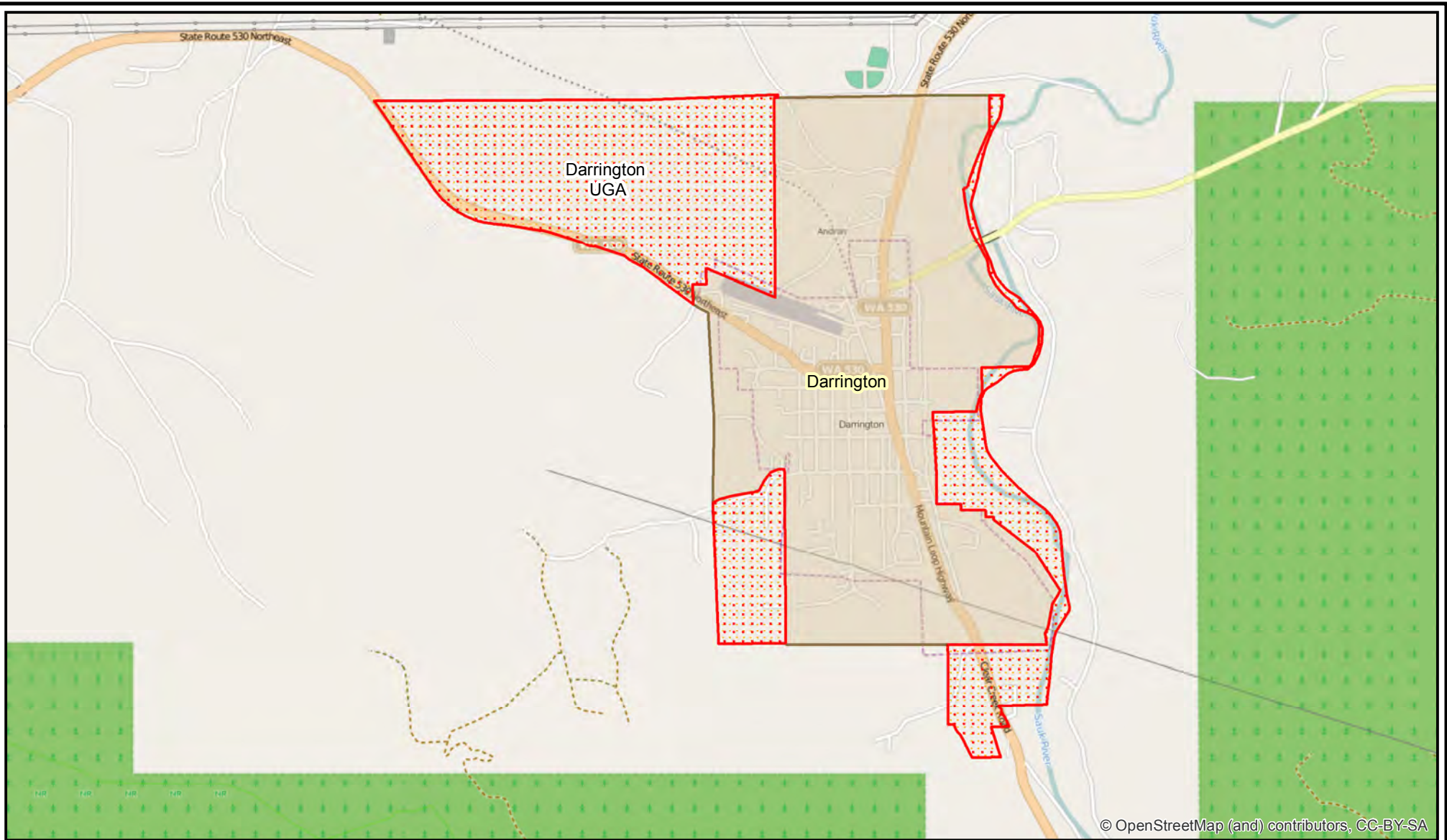


Washington State Office of Financial Management Forecasting Division




Disclaimer: By using these data, the user agrees that the Office of Financial Management shall not be liable for any activity involving these data with regard to lost profits or savings or any other consequential damages; or the fitness for use of the data for a particular purpose; or the installation of the data, its use, or the results obtained.

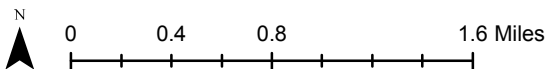
Data Source: Urban Growth Boundaries and City Limits: Washington State Department of Transportation, May 2013.

Map prepared by Thomas Kimpel, Forecast Analyst, September 24, 2013.



Darrington UGA (Unincorporated Portion Only)

-  Selected Urban Growth Area (Unincorporated Portion)
-  Urban Growth Area (Unincorporated Portion)
-  City Limits (DOT 2013-05)

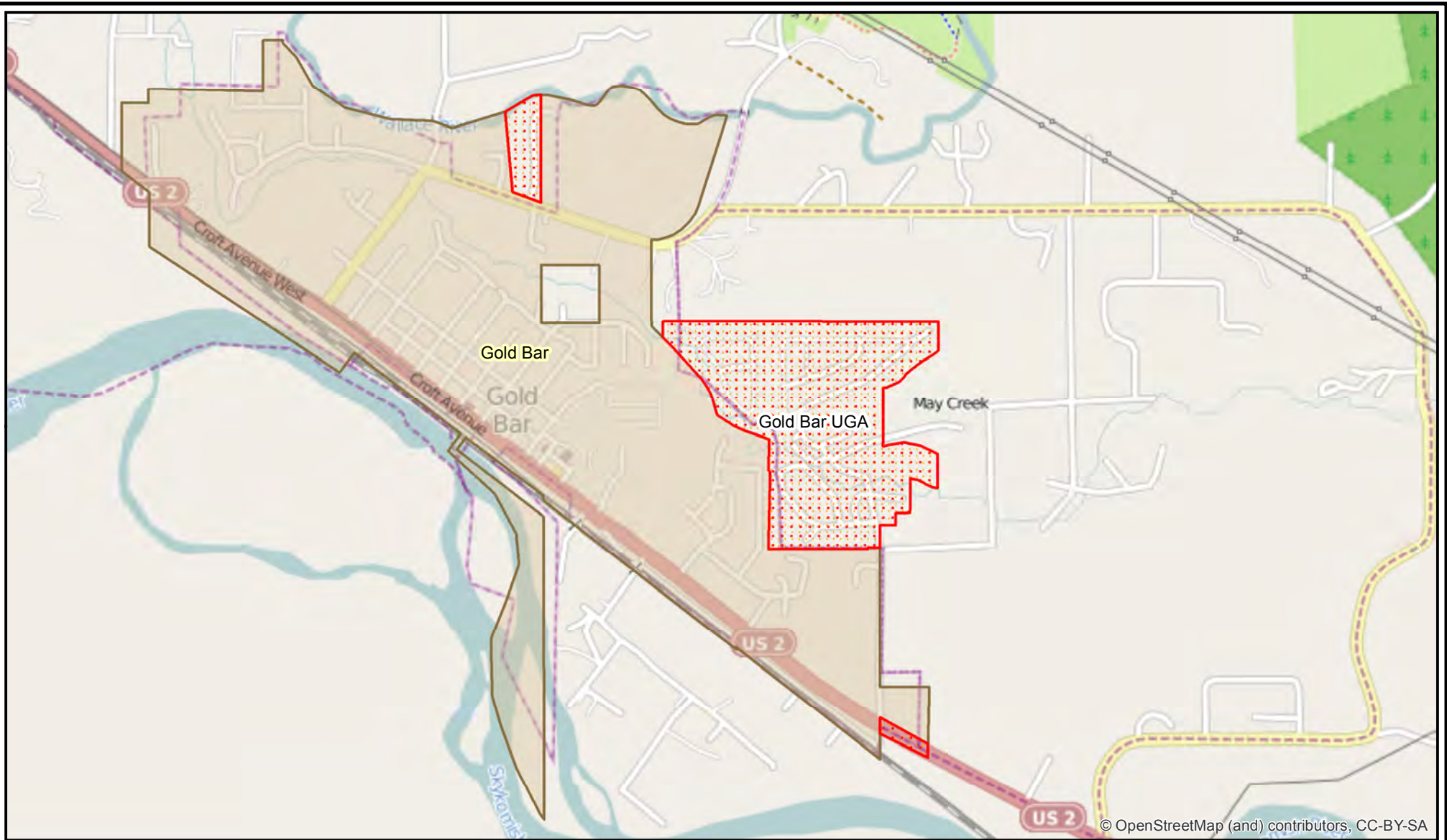


Washington State Office of Financial Management Forecasting Division




Disclaimer: By using these data, the user agrees that the Office of Financial Management shall not be liable for any activity involving these data with regard to lost profits or savings or any other consequential damages; or the fitness for use of the data for a particular purpose; or the installation of the data, its use, or the results obtained.

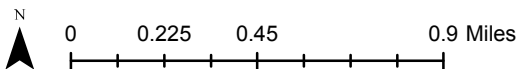
Data Source: Urban Growth Boundaries and City Limits: Washington State Department of Transportation, May 2013.

Map prepared by Thomas Kimpel, Forecast Analyst, September 24, 2013.



Gold Bar UGA (Unincorporated Portion Only)

-  Selected Urban Growth Area (Unincorporated Portion)
-  Urban Growth Area (Unincorporated Portion)
-  City Limits (DOT 2013-05)

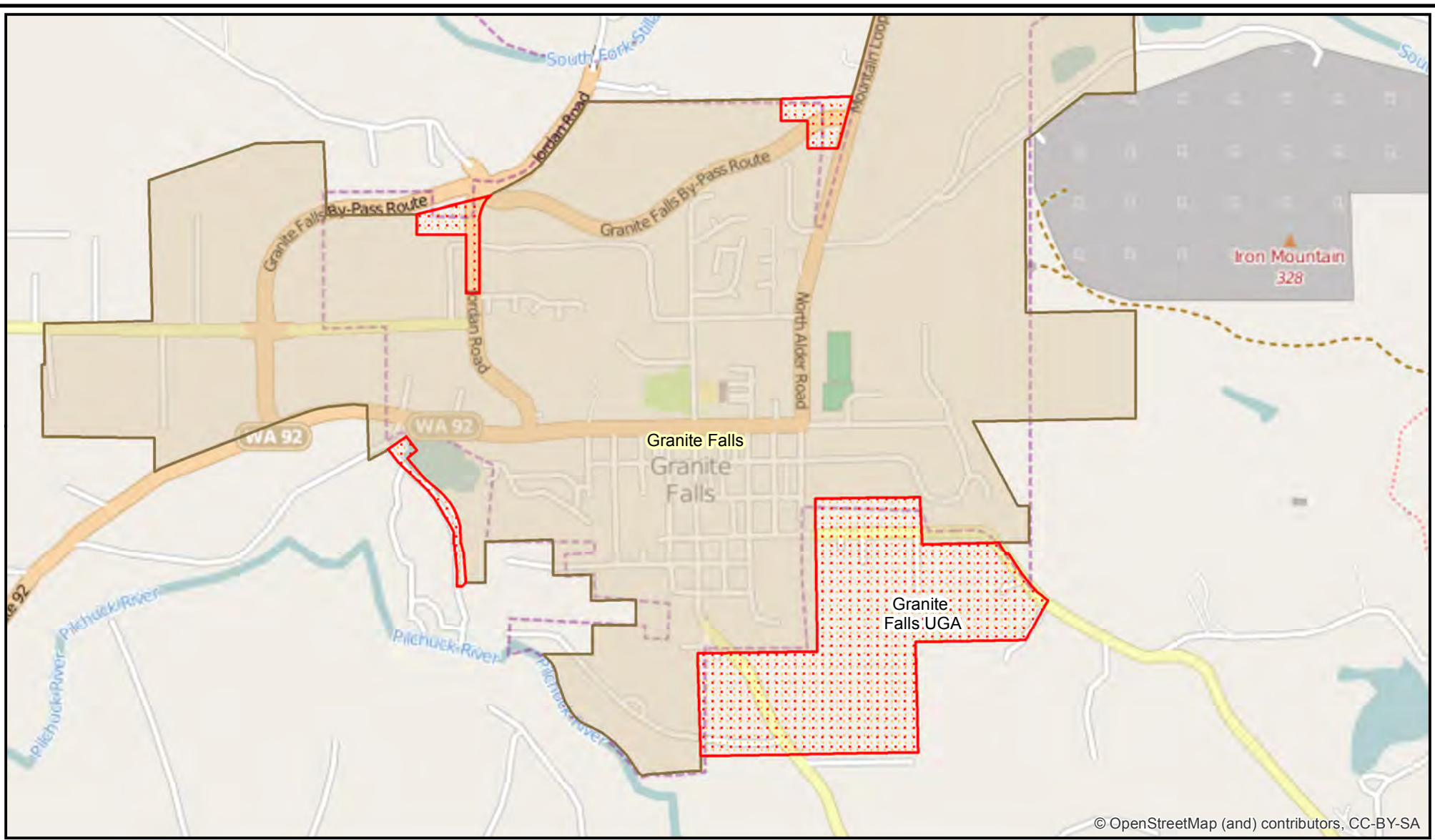


Washington State Office of Financial Management Forecasting Division

Disclaimer: By using these data, the user agrees that the Office of Financial Management shall not be liable for any activity involving these data with regard to lost profits or savings or any other consequential damages; or the fitness for use of the data for a particular purpose; or the installation of the data, its use, or the results obtained.




Data Source: Urban Growth Boundaries and City Limits: Washington State Department of Transportation, May 2013.

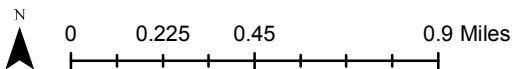
Map prepared by Thomas Kimpel, Forecast Analyst, September 24, 2013.



© OpenStreetMap (and) contributors, CC-BY-SA

Granite Falls UGA (Unincorporated Portion Only)

-  Selected Urban Growth Area (Unincorporated Portion)
-  Urban Growth Area (Unincorporated Portion)
-  City Limits (DOT 2013-05)

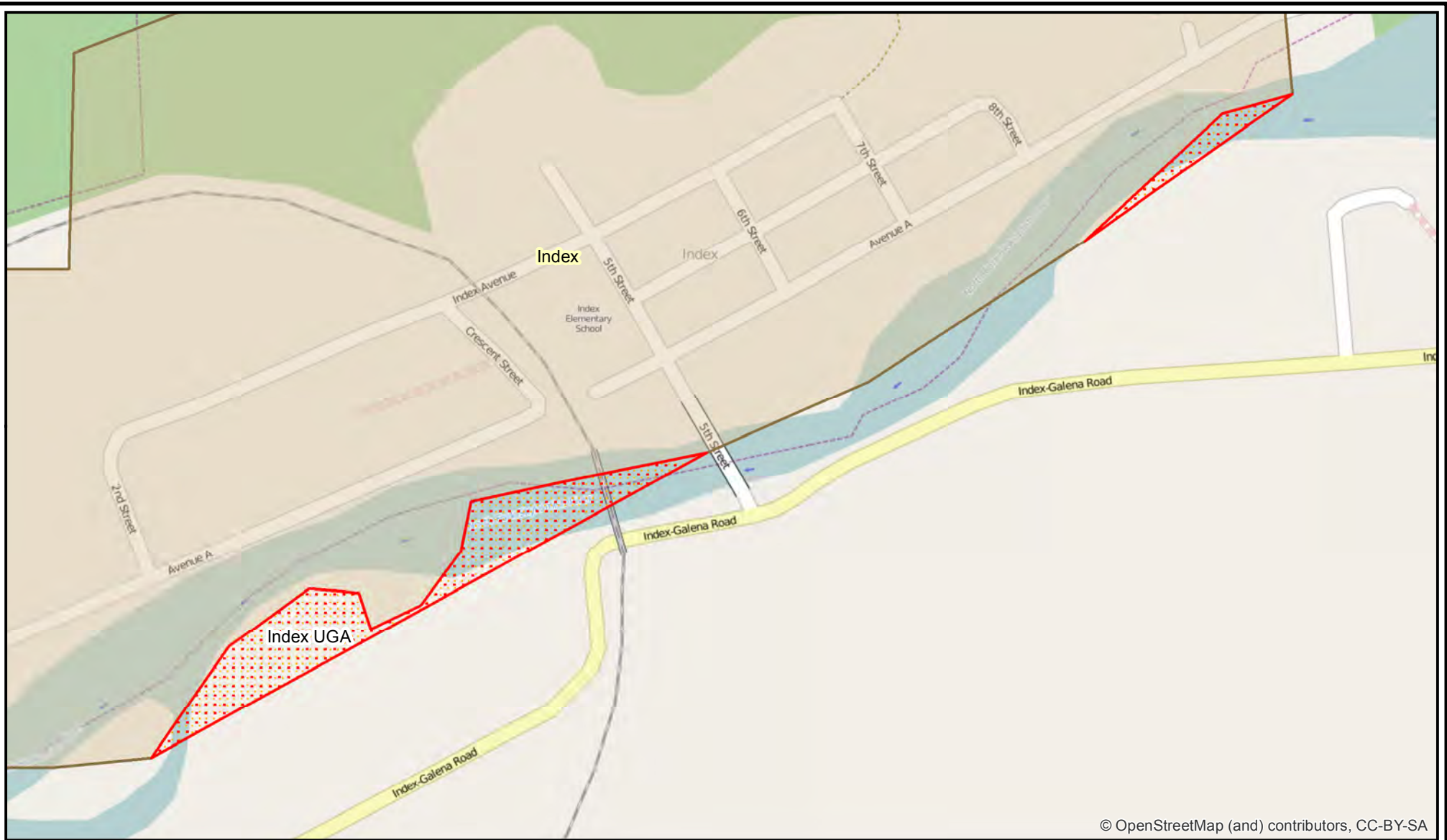


Washington State Office of Financial Management Forecasting Division

Disclaimer: By using these data, the user agrees that the Office of Financial Management shall not be liable for any activity involving these data with regard to lost profits or savings or any other consequential damages; or the fitness for use of the data for a particular purpose; or the installation of the data, its use, or the results obtained.




Data Source: Urban Growth Boundaries and City Limits: Washington State Department of Transportation, May 2013.

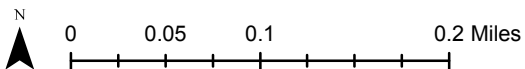
Map prepared by Thomas Kimpel, Forecast Analyst, September 24, 2013.



© OpenStreetMap (and) contributors, CC-BY-SA

Index UGA (Unincorporated Portion Only)

-  Selected Urban Growth Area (Unincorporated Portion)
-  Urban Growth Area (Unincorporated Portion)
-  City Limits (DOT 2013-05)

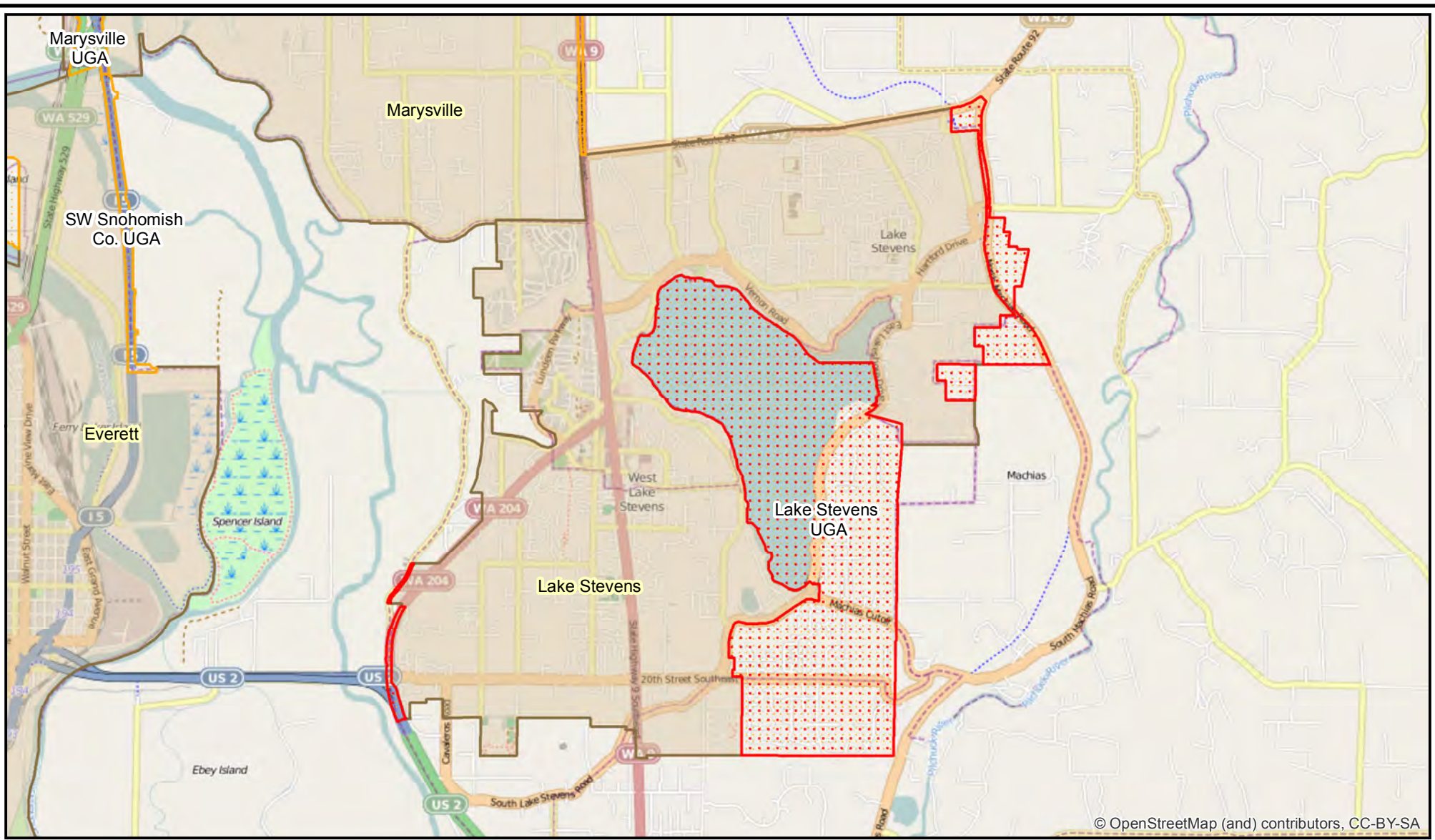


Washington State Office of Financial Management Forecasting Division



Disclaimer: By using these data, the user agrees that the Office of Financial Management shall not be liable for any activity involving these data with regard to lost profits or savings or any other consequential damages; or the fitness for use of the data for a particular purpose; or the installation of the data, its use, or the results obtained.

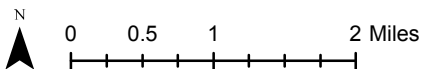
Data Source: Urban Growth Boundaries and City Limits: Washington State Department of Transportation, May 2013.

Map prepared by Thomas Kimpel, Forecast Analyst, September 24, 2013.



Lake Stevens UGA (Unincorporated Portion Only)

-  Selected Urban Growth Area (Unincorporated Portion)
-  Urban Growth Area (Unincorporated Portion)
-  City Limits (DOT 2013-05)

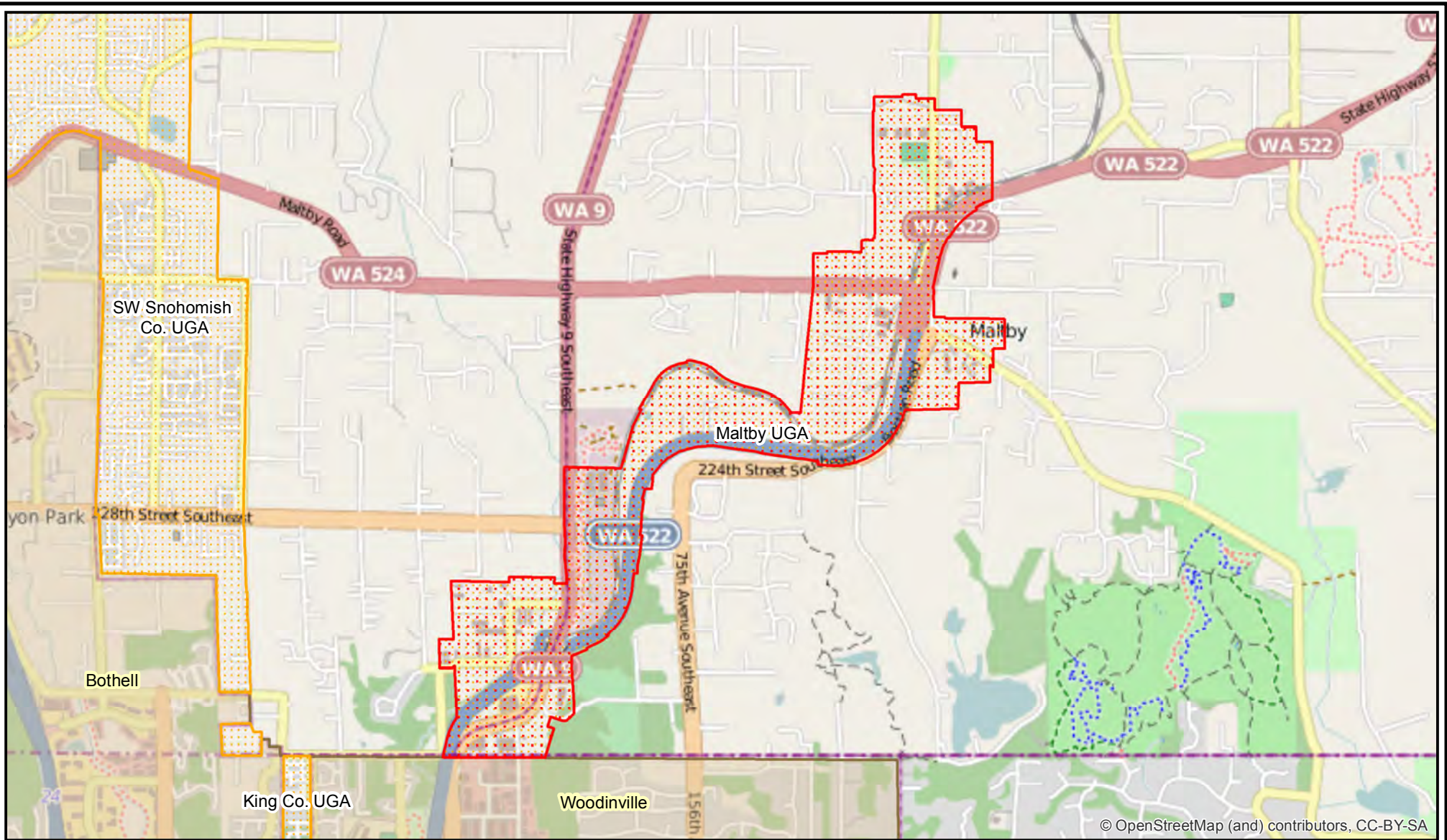


Washington State Office of Financial Management Forecasting Division

Disclaimer: By using these data, the user agrees that the Office of Financial Management shall not be liable for any activity involving these data with regard to lost profits or savings or any other consequential damages; or the fitness for use of the data for a particular purpose; or the installation of the data, its use, or the results obtained.


Data Source: Urban Growth Boundaries and City Limits: Washington State Department of Transportation, May 2013.

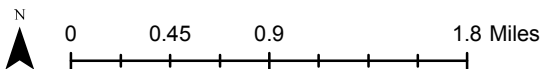
Map prepared by Thomas Kimpel, Forecast Analyst, September 24, 2013.



© OpenStreetMap (and) contributors, CC-BY-SA

Maltby UGA (Unincorporated Portion Only)

-  Selected Urban Growth Area (Unincorporated Portion)
-  Urban Growth Area (Unincorporated Portion)
-  City Limits (DOT 2013-05)

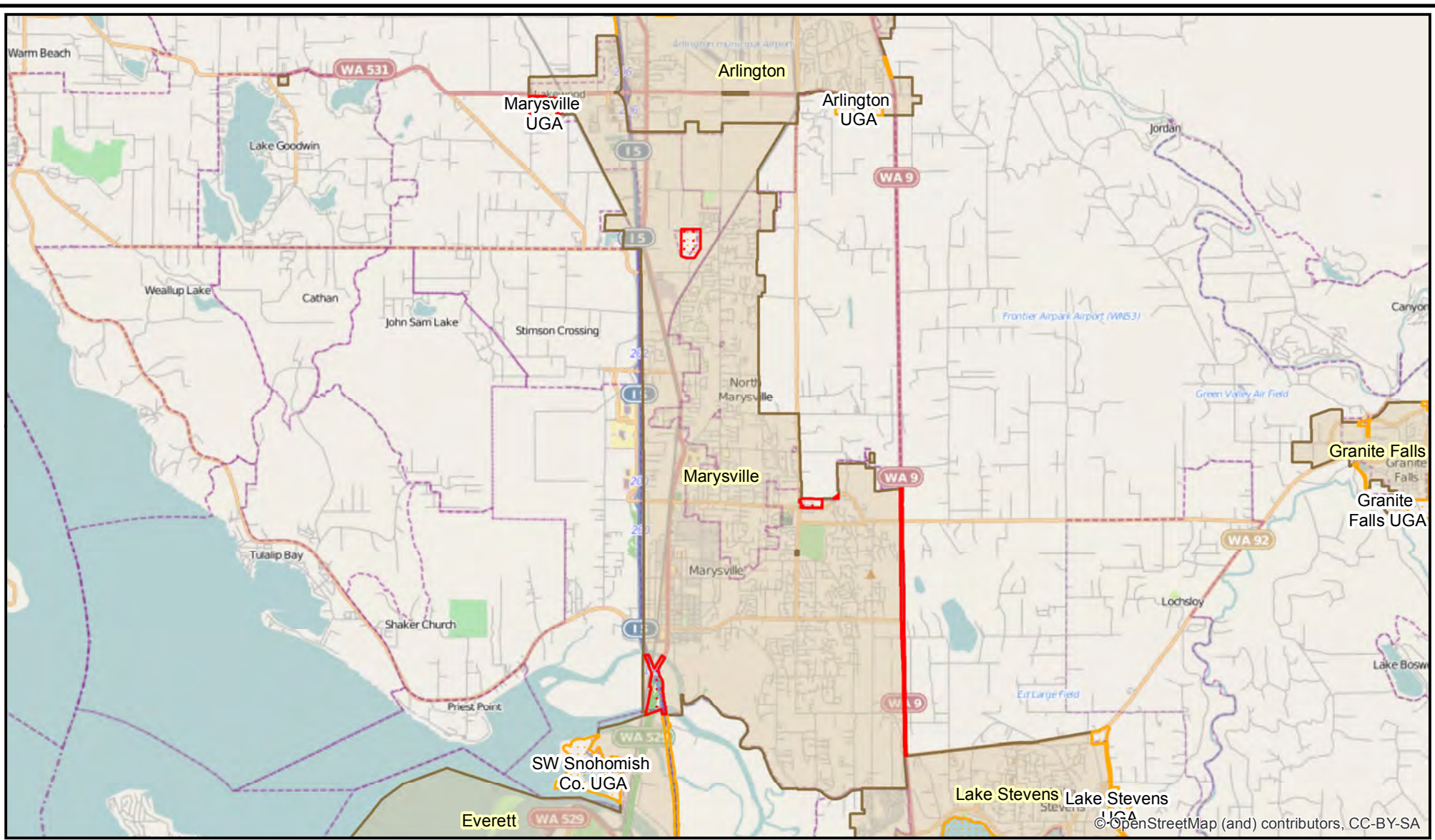


Washington State Office of Financial Management Forecasting Division

Disclaimer: By using these data, the user agrees that the Office of Financial Management shall not be liable for any activity involving these data with regard to lost profits or savings or any other consequential damages; or the fitness for use of the data for a particular purpose; or the installation of the data, its use, or the results obtained.




Data Source: Urban Growth Boundaries and City Limits: Washington State Department of Transportation, May 2013.

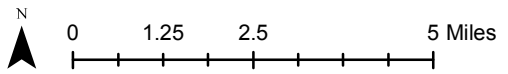
Map prepared by Thomas Kimpel, Forecast Analyst, September 24, 2013.



© OpenStreetMap (and) contributors, CC-BY-SA

**Marysville UGA
(Unincorporated Portion Only)**

-  Selected Urban Growth Area (Unincorporated Portion)
-  Urban Growth Area (Unincorporated Portion)
-  City Limits (DOT 2013-05)

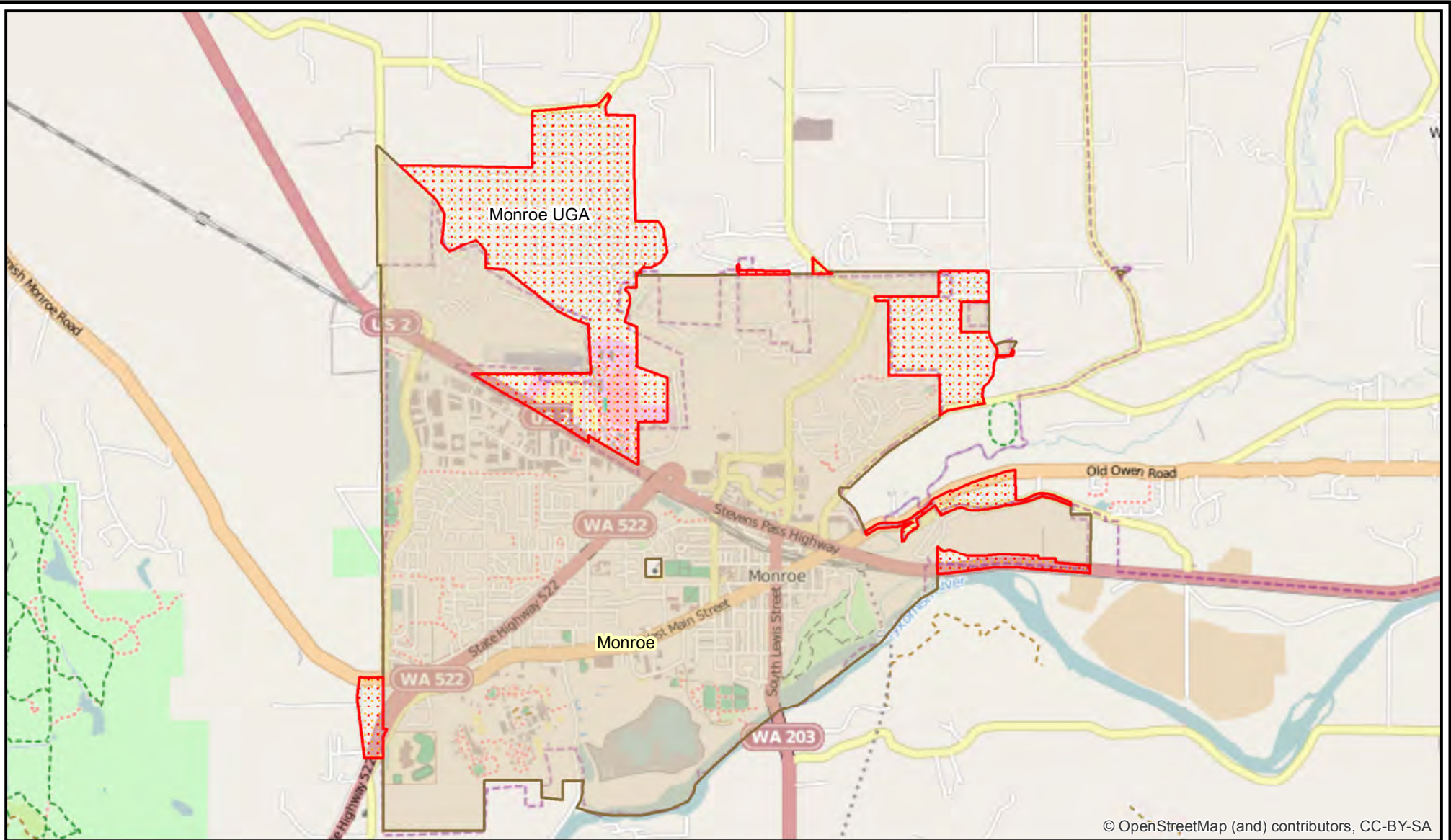


**Washington State
Office of Financial Management
Forecasting Division**

Disclaimer: By using these data, the user agrees that the Office of Financial Management shall not be liable for any activity involving these data with regard to lost profits or savings or any other consequential damages; or the fitness for use of the data for a particular purpose; or the installation of the data, its use, or the results obtained.


Data Source: Urban Growth Boundaries and City Limits: Washington State Department of Transportation, May 2013.

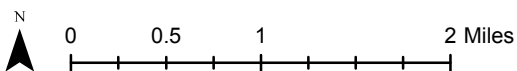
Map prepared by Thomas Kimpel, Forecast Analyst, September 24, 2013.



© OpenStreetMap (and) contributors, CC-BY-SA

Monroe UGA (Unincorporated Portion Only)

-  Selected Urban Growth Area (Unincorporated Portion)
-  Urban Growth Area (Unincorporated Portion)
-  City Limits (DOT 2013-05)

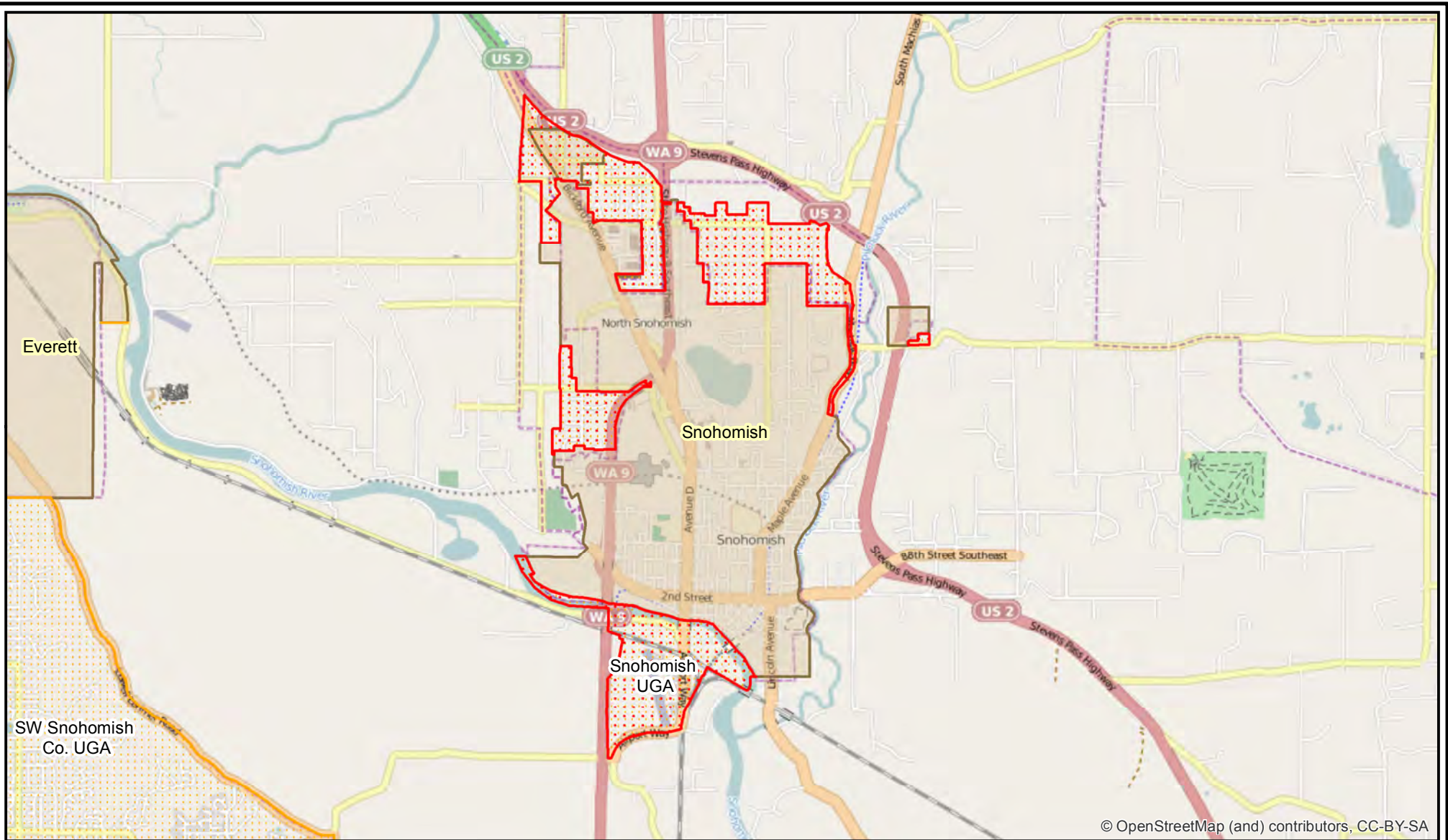


Washington State Office of Financial Management Forecasting Division

Disclaimer: By using these data, the user agrees that the Office of Financial Management shall not be liable for any activity involving these data with regard to lost profits or savings or any other consequential damages; or the fitness for use of the data for a particular purpose; or the installation of the data, its use, or the results obtained.




Data Source: Urban Growth Boundaries and City Limits: Washington State Department of Transportation, May 2013.

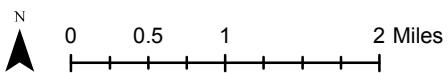
Map prepared by Thomas Kimpel, Forecast Analyst, September 24, 2013.



© OpenStreetMap (and) contributors, CC-BY-SA

Snohomish UGA (Unincorporated Portion Only)

-  Selected Urban Growth Area (Unincorporated Portion)
-  Urban Growth Area (Unincorporated Portion)
-  City Limits (DOT 2013-05)

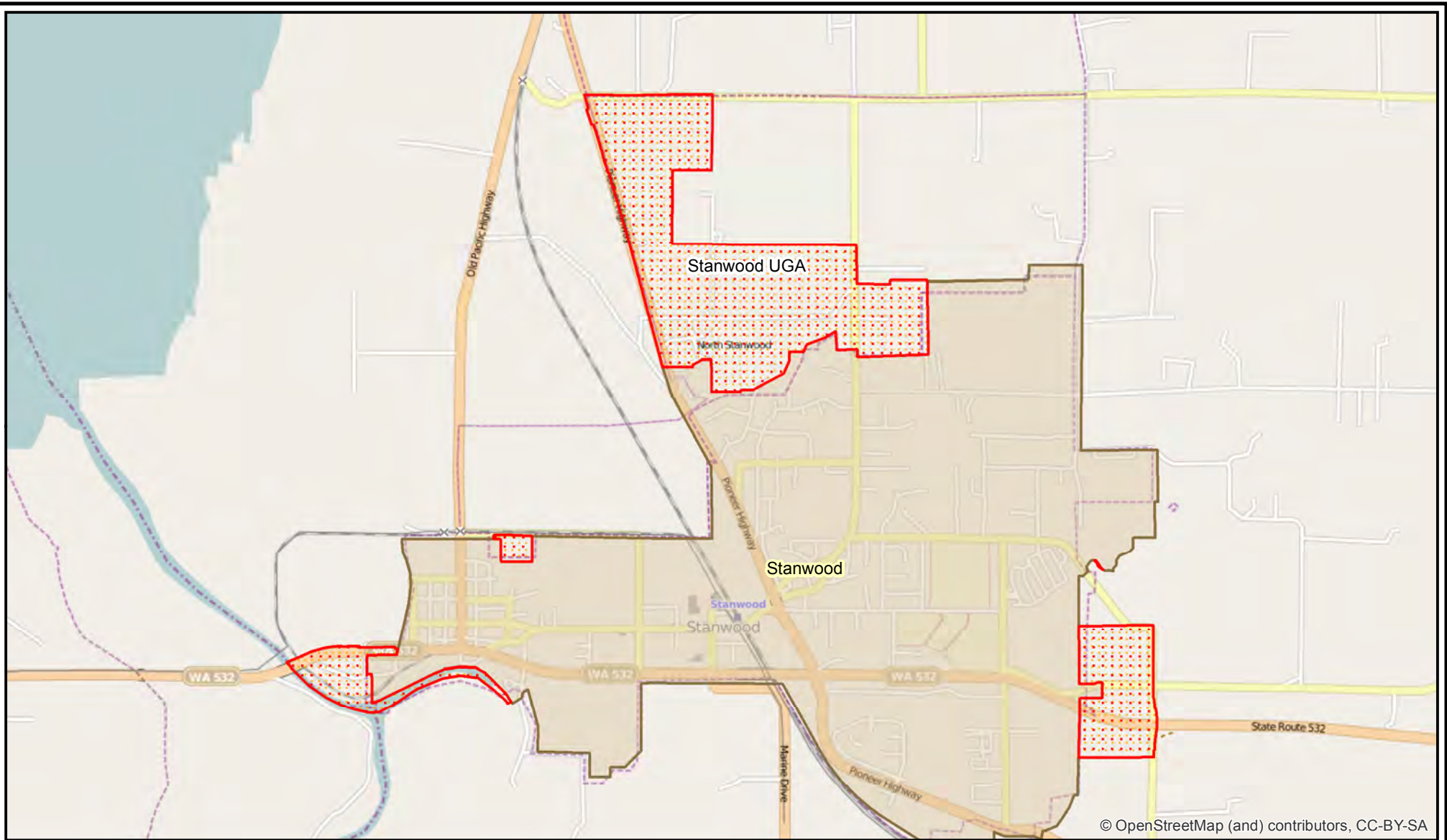


Washington State Office of Financial Management Forecasting Division




Disclaimer: By using these data, the user agrees that the Office of Financial Management shall not be liable for any activity involving these data with regard to lost profits or savings or any other consequential damages; or the fitness for use of the data for a particular purpose; or the installation of the data, its use, or the results obtained.

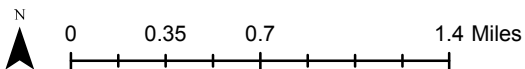
Data Source: Urban Growth Boundaries and City Limits: Washington State Department of Transportation, May 2013.

Map prepared by Thomas Kimpel, Forecast Analyst, September 24, 2013.



Stanwood UGA (Unincorporated Portion Only)

-  Selected Urban Growth Area (Unincorporated Portion)
-  Urban Growth Area (Unincorporated Portion)
-  City Limits (DOT 2013-05)

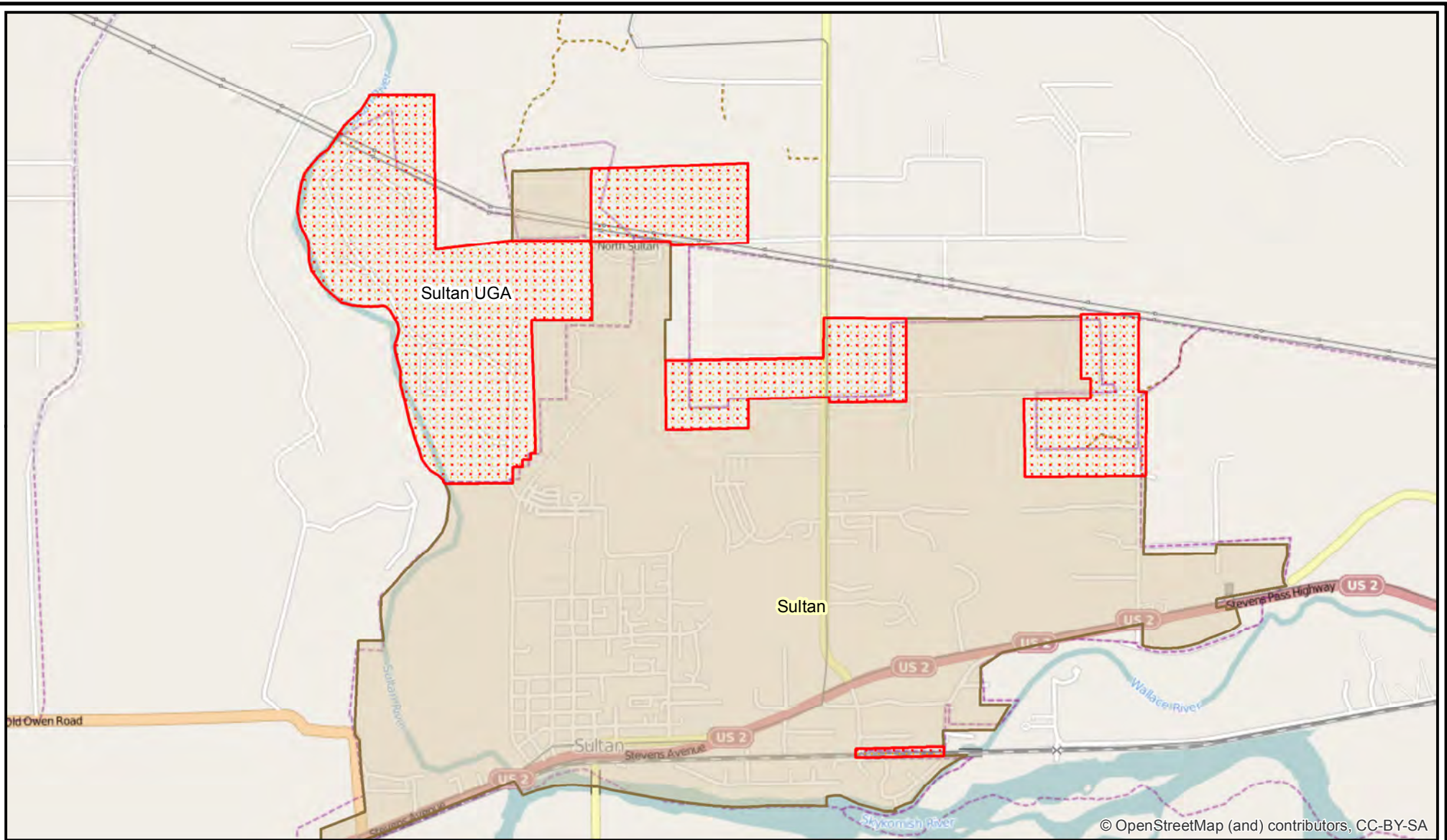


Washington State Office of Financial Management Forecasting Division

Disclaimer: By using these data, the user agrees that the Office of Financial Management shall not be liable for any activity involving these data with regard to lost profits or savings or any other consequential damages; or the fitness for use of the data for a particular purpose; or the installation of the data, its use, or the results obtained.




Data Source: Urban Growth Boundaries and City Limits: Washington State Department of Transportation, May 2013.

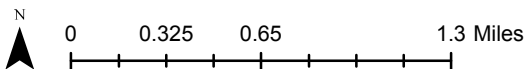
Map prepared by Thomas Kimpel, Forecast Analyst, September 24, 2013.



© OpenStreetMap (and) contributors, CC-BY-SA

Sultan UGA (Unincorporated Portion Only)

-  Selected Urban Growth Area (Unincorporated Portion)
-  Urban Growth Area (Unincorporated Portion)
-  City Limits (DOT 2013-05)

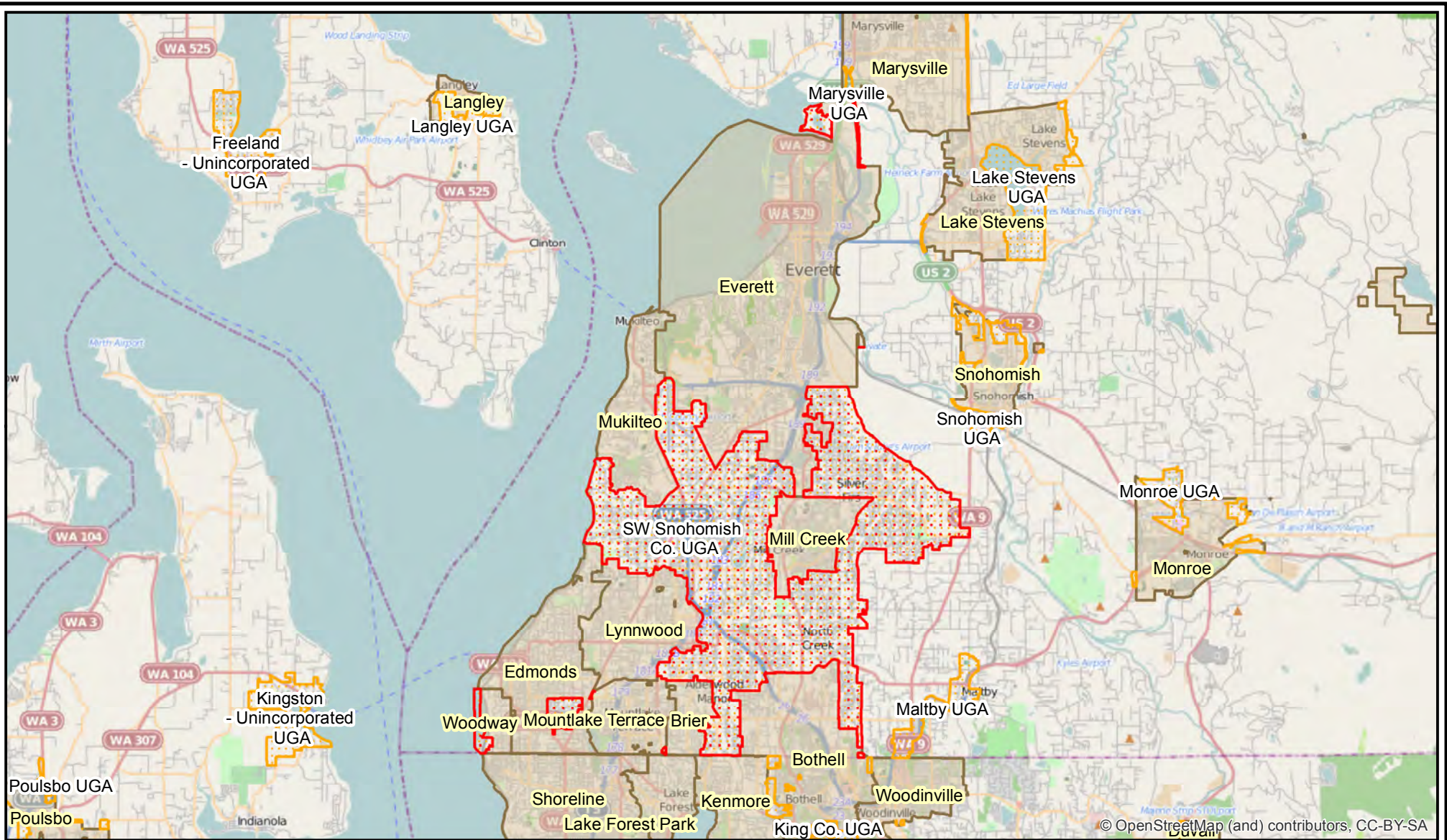


Washington State Office of Financial Management Forecasting Division




Disclaimer: By using these data, the user agrees that the Office of Financial Management shall not be liable for any activity involving these data with regard to lost profits or savings or any other consequential damages; or the fitness for use of the data for a particular purpose; or the installation of the data, its use, or the results obtained.

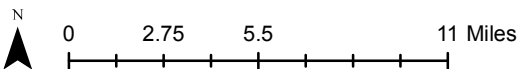
Data Source: Urban Growth Boundaries and City Limits: Washington State Department of Transportation, May 2013.

Map prepared by Thomas Kimpel, Forecast Analyst, September 24, 2013.



SW Snohomish Co. UGA (Unincorporated Portion Only)

-  Selected Urban Growth Area (Unincorporated Portion)
-  Urban Growth Area (Unincorporated Portion)
-  City Limits (DOT 2013-05)



Washington State Office of Financial Management Forecasting Division

Disclaimer: By using these data, the user agrees that the Office of Financial Management shall not be liable for any activity involving these data with regard to lost profits or savings or any other consequential damages; or the fitness for use of the data for a particular purpose; or the installation of the data, its use, or the results obtained.

Data Source: Urban Growth Boundaries and City Limits: Washington State Department of Transportation, May 2013.

Map prepared by Thomas Kimpel, Forecast Analyst, September 24, 2013.