


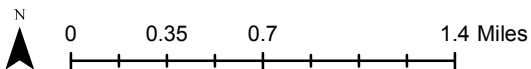


© OpenStreetMap (and) contributors, CC-BY-SA

### Bridgeport UGA (Unincorporated Portion Only)

-  Selected Urban Growth Area (Unincorporated Portion)
-  Urban Growth Area (Unincorporated Portion)
-  City Limits (DOT 2013-05)

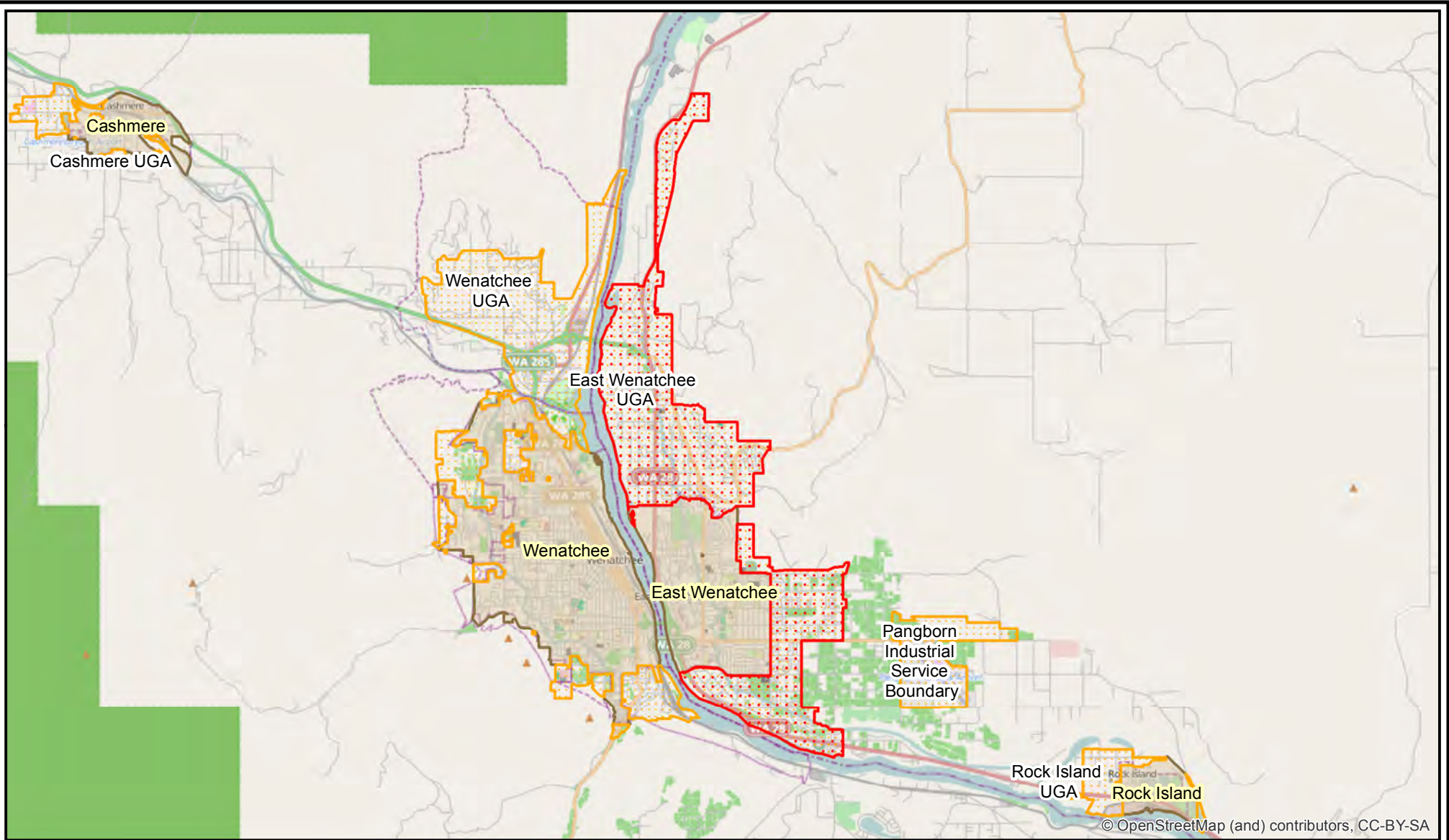


### Washington State Office of Financial Management Forecasting Division

Disclaimer: By using these data, the user agrees that the Office of Financial Management shall not be liable for any activity involving these data with regard to lost profits or savings or any other consequential damages; or the fitness for use of the data for a particular purpose; or the installation of the data, its use, or the results obtained.




Data Source: Urban Growth Boundaries and City Limits: Washington State Department of Transportation, May 2013.

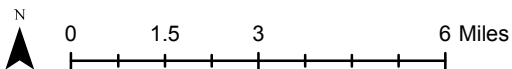
Map prepared by Thomas Kimpel, Forecast Analyst, September 24, 2013.



© OpenStreetMap (and) contributors, CC-BY-SA

### East Wenatchee UGA (Unincorporated Portion Only)

-  Selected Urban Growth Area (Unincorporated Portion)
-  Urban Growth Area (Unincorporated Portion)
-  City Limits (DOT 2013-05)

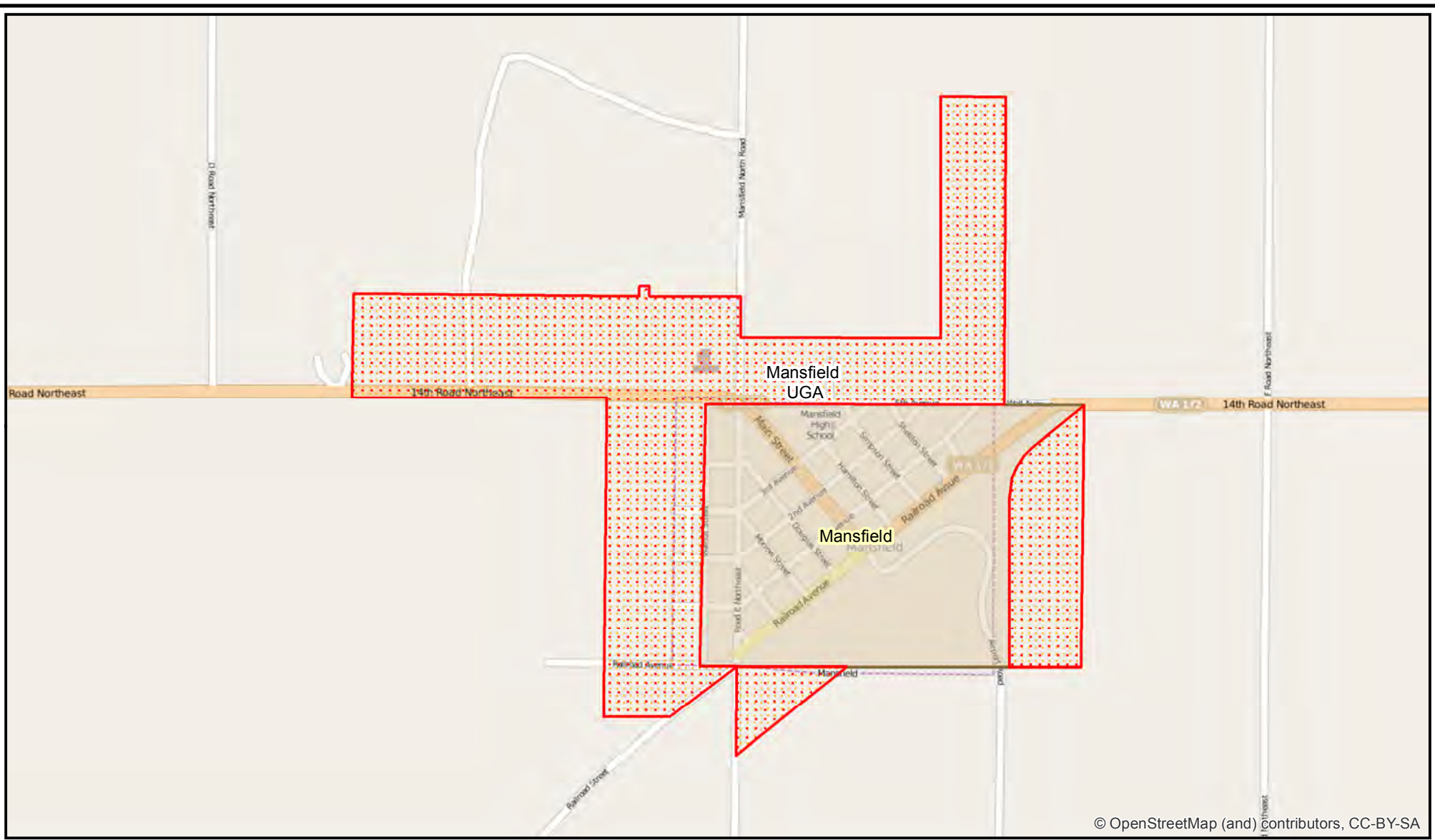


### Washington State Office of Financial Management Forecasting Division

Disclaimer: By using these data, the user agrees that the Office of Financial Management shall not be liable for any activity involving these data with regard to lost profits or savings or any other consequential damages; or the fitness for use of the data for a particular purpose; or the installation of the data, its use, or the results obtained.


Data Source: Urban Growth Boundaries and City Limits: Washington State Department of Transportation, May 2013.

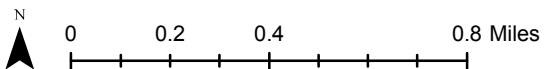
Map prepared by Thomas Kimpel, Forecast Analyst, September 24, 2013.



© OpenStreetMap (and) contributors, CC-BY-SA

### Mansfield UGA (Unincorporated Portion Only)

-  Selected Urban Growth Area (Unincorporated Portion)
-  Urban Growth Area (Unincorporated Portion)
-  City Limits (DOT 2013-05)

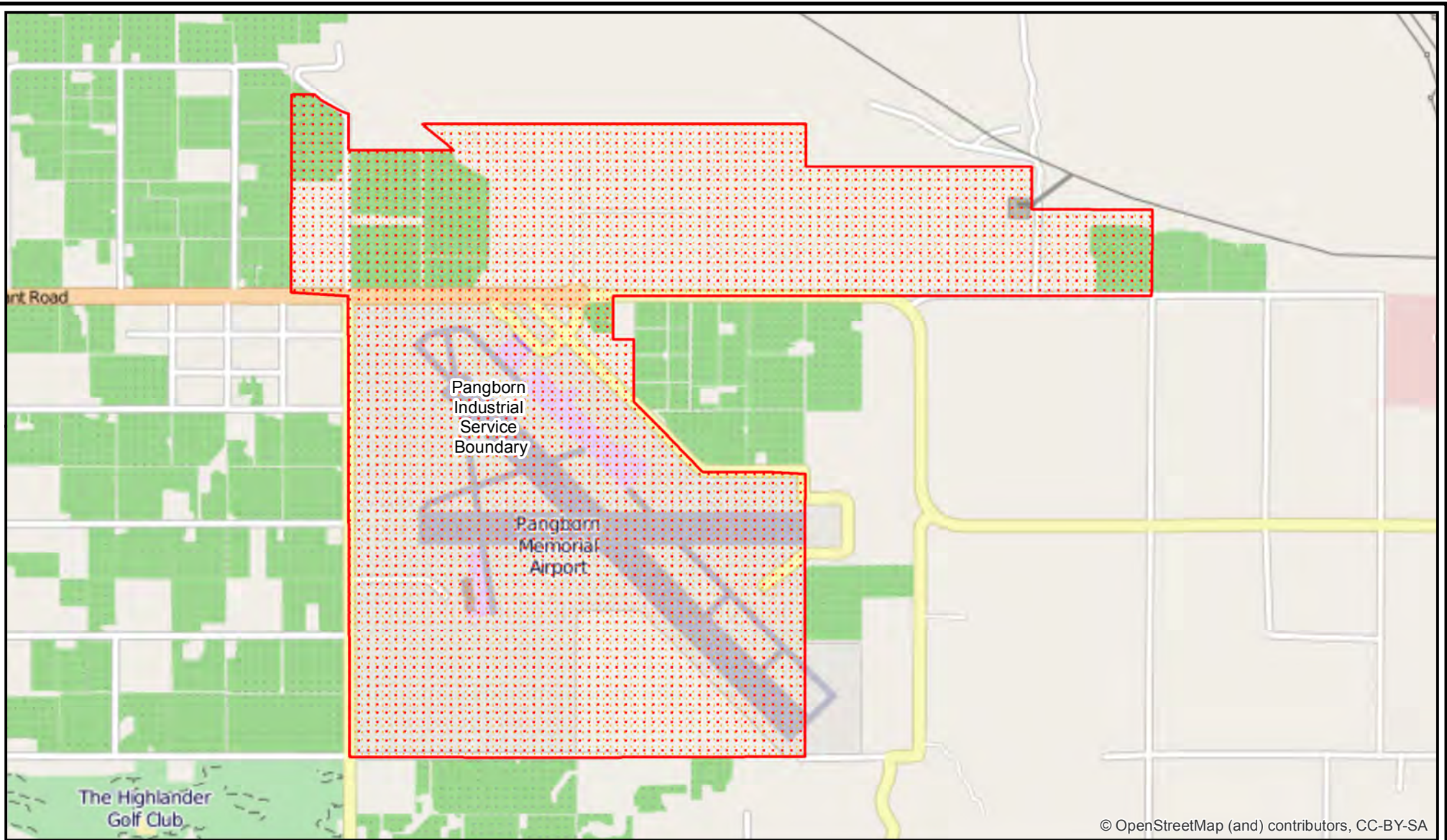


### Washington State Office of Financial Management Forecasting Division




Disclaimer: By using these data, the user agrees that the Office of Financial Management shall not be liable for any activity involving these data with regard to lost profits or savings or any other consequential damages; or the fitness for use of the data for a particular purpose; or the installation of the data, its use, or the results obtained.

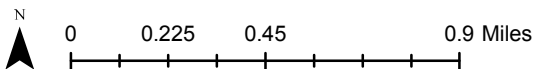
Data Source: Urban Growth Boundaries and City Limits: Washington State Department of Transportation, May 2013.

Map prepared by Thomas Kimpel, Forecast Analyst, September 24, 2013.



### Pangborn Industrial Service Boundary (Unincorporated Portion Only)

-  Selected Urban Growth Area (Unincorporated Portion)
-  Urban Growth Area (Unincorporated Portion)
-  City Limits (DOT 2013-05)

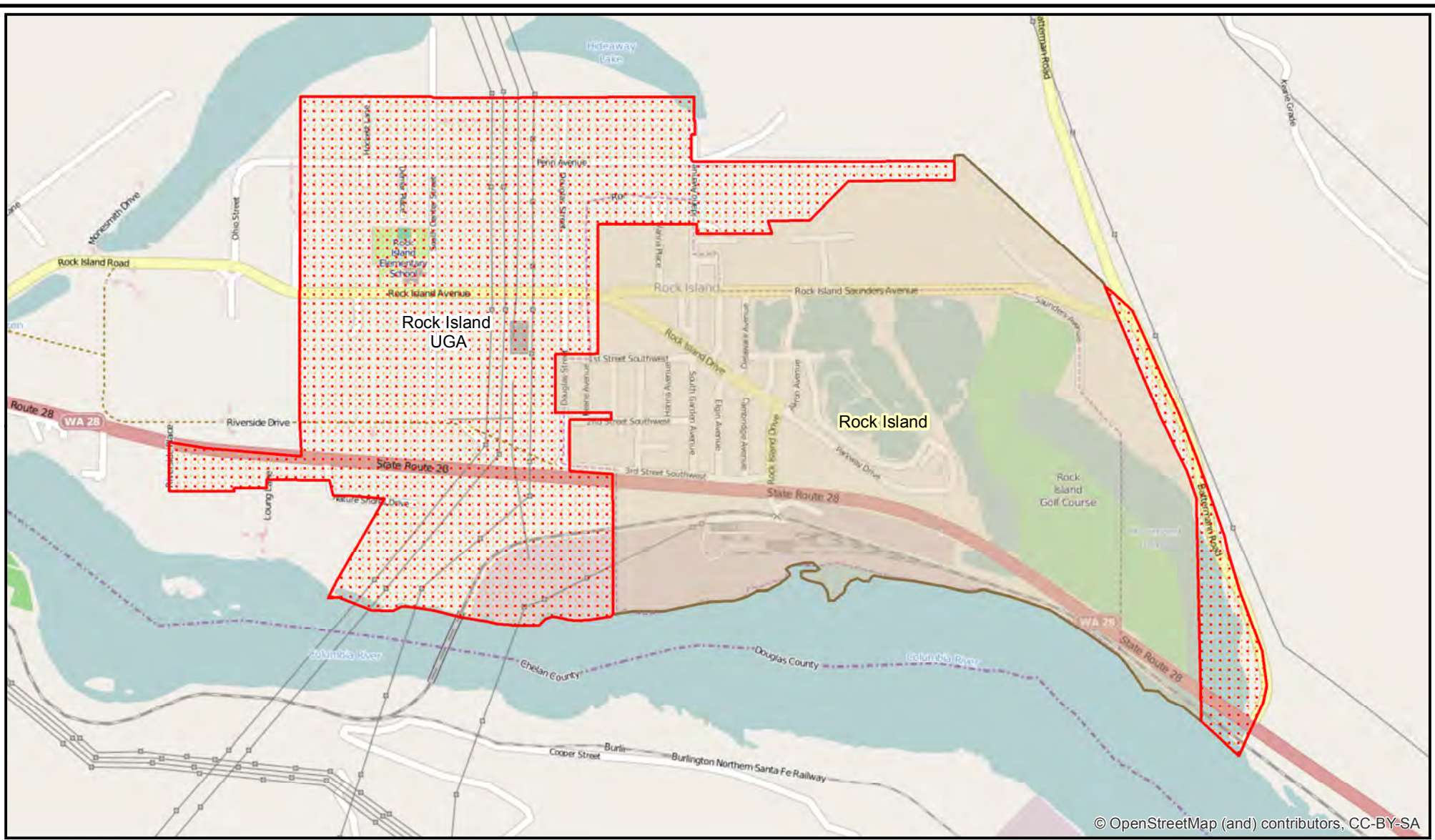


### Washington State Office of Financial Management Forecasting Division

Disclaimer: By using these data, the user agrees that the Office of Financial Management shall not be liable for any activity involving these data with regard to lost profits or savings or any other consequential damages; or the fitness for use of the data for a particular purpose; or the installation of the data, its use, or the results obtained.



Data Source: Urban Growth Boundaries and City Limits: Washington State Department of Transportation, May 2013.

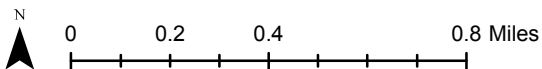
Map prepared by Thomas Kimpel, Forecast Analyst, September 24, 2013.



© OpenStreetMap (and) contributors, CC-BY-SA

### Rock Island UGA (Unincorporated Portion Only)

-  Selected Urban Growth Area (Unincorporated Portion)
-  Urban Growth Area (Unincorporated Portion)
-  City Limits (DOT 2013-05)

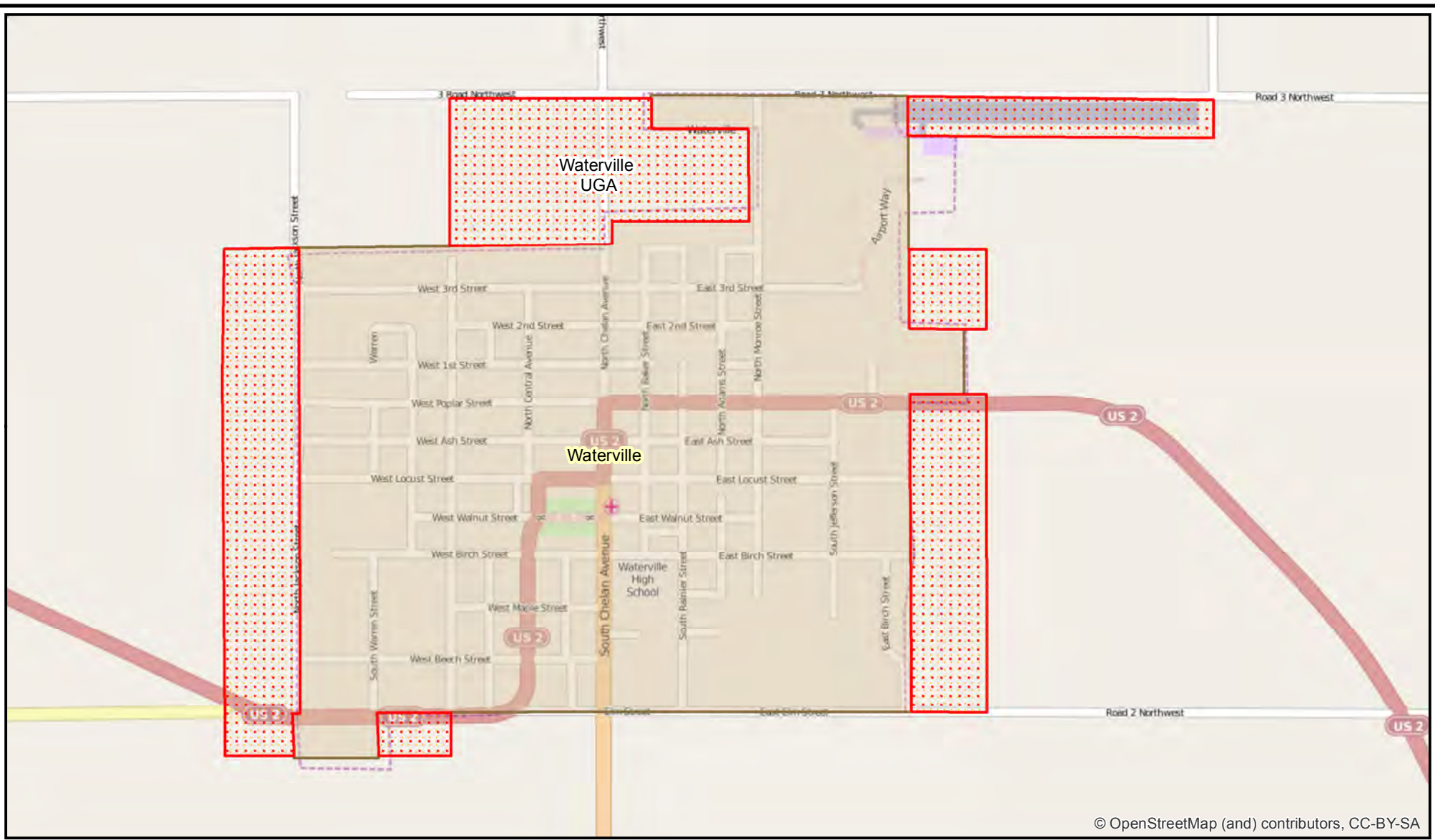


### Washington State Office of Financial Management Forecasting Division

Disclaimer: By using these data, the user agrees that the Office of Financial Management shall not be liable for any activity involving these data with regard to lost profits or savings or any other consequential damages; or the fitness for use of the data for a particular purpose; or the installation of the data, its use, or the results obtained.

Data Source: Urban Growth Boundaries and City Limits: Washington State Department of Transportation, May 2013.

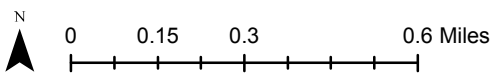
Map prepared by Thomas Kimpel, Forecast Analyst, September 24, 2013.



© OpenStreetMap (and) contributors, CC-BY-SA

### Waterville UGA (Unincorporated Portion Only)

-  Selected Urban Growth Area (Unincorporated Portion)
-  Urban Growth Area (Unincorporated Portion)
-  City Limits (DOT 2013-05)



### Washington State Office of Financial Management Forecasting Division

Disclaimer: By using these data, the user agrees that the Office of Financial Management shall not be liable for any activity involving these data with regard to lost profits or savings or any other consequential damages; or the fitness for use of the data for a particular purpose; or the installation of the data, its use, or the results obtained.

Data Source: Urban Growth Boundaries and City Limits: Washington State Department of Transportation, May 2013.

Map prepared by Thomas Kimpel, Forecast Analyst, September 24, 2013.