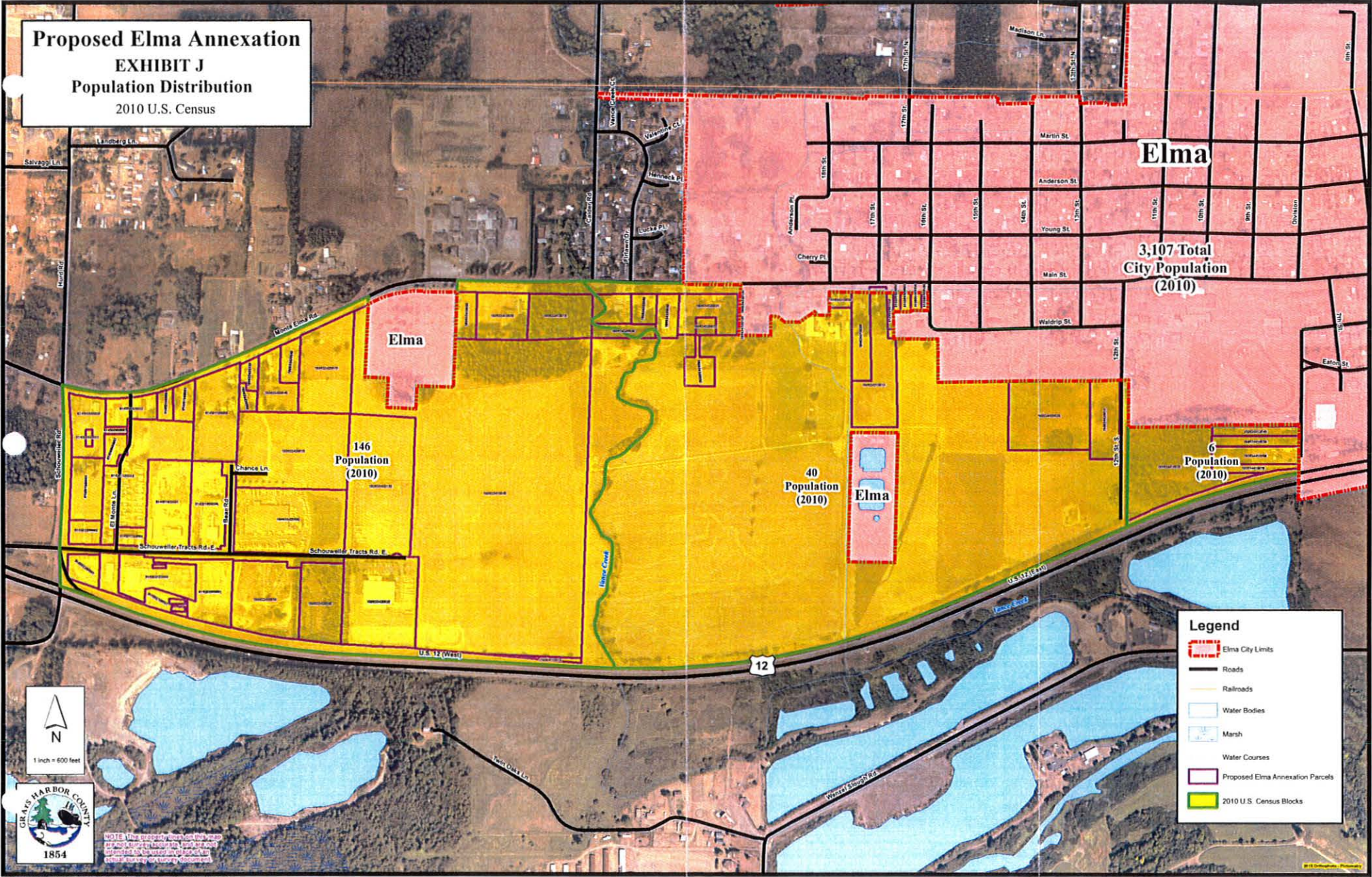


Proposed Elma Annexation
EXHIBIT J
Population Distribution
 2010 U.S. Census



Elma

**3,107 Total
City Population
(2010)**

Elma

**146
Population
(2010)**

**40
Population
(2010)**

Elma

**6
Population
(2010)**

- Legend**
- Elma City Limits
 - Roads
 - Railroads
 - Water Bodies
 - Marsh
 - Water Courses
 - Proposed Elma Annexation Parcels
 - 2010 U.S. Census Blocks



1 inch = 600 feet



NOTE: This graphic is prepared for informational purposes only. It is not intended to be used as a legal document. For more information, please contact the County Office.