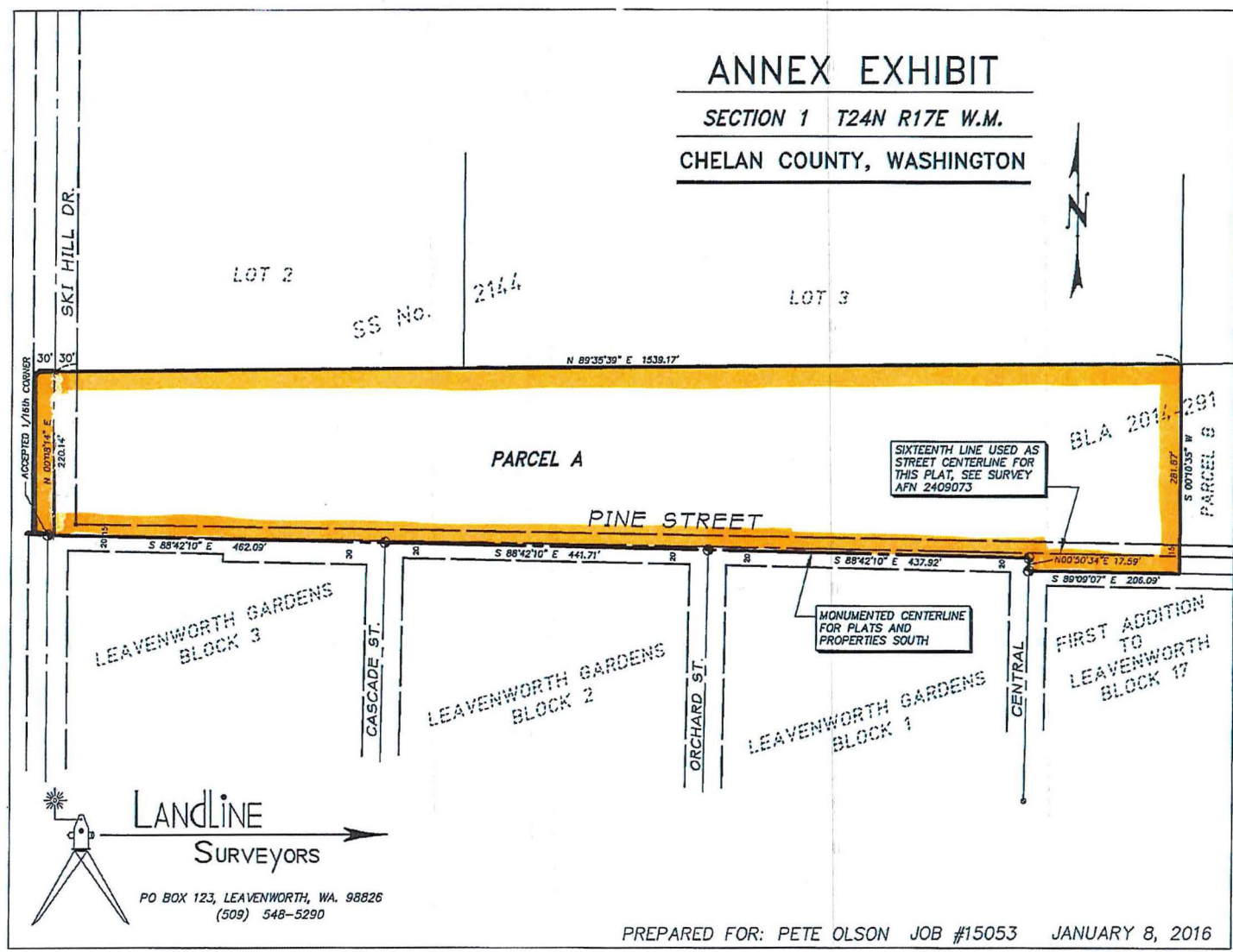
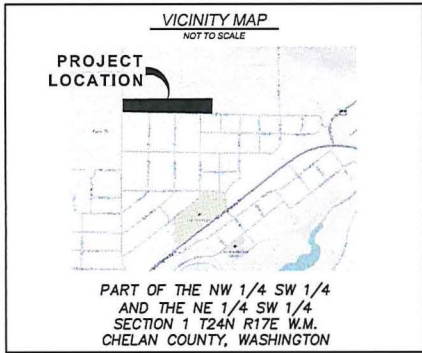


# ANNEX EXHIBIT

SECTION 1 T24N R17E W.M.

CHELAN COUNTY, WASHINGTON

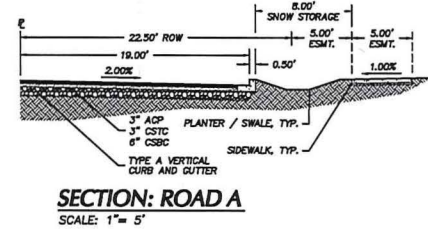
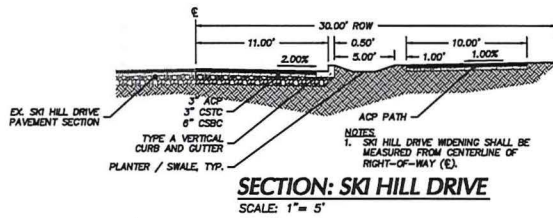
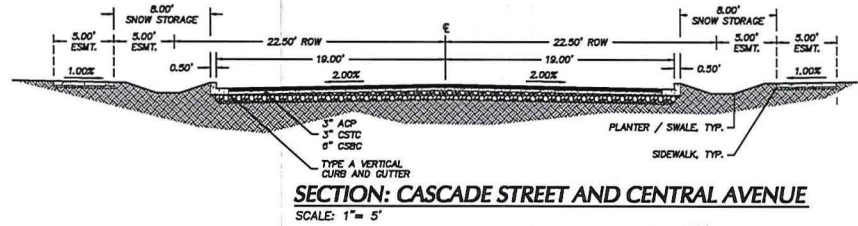
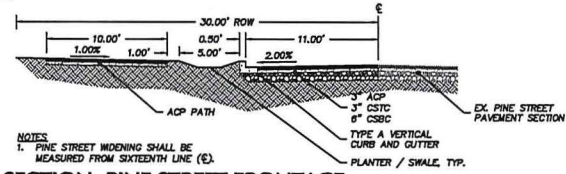




# PINEGRASS SUBDIVISION

## PRELIMINARY ENGINEERING

CITY OF LEAVENWORTH, WA



**CONTACT INFORMATION**

**DEVELOPER:** PRUSIK INVESTMENTS, LLC  
PO BOX 2182  
LEAVENWORTH, WA 98826  
(CONTACT) PETE OLSON  
(509) 881-9990

**SURVEYOR:** LANDLINE SURVEYORS  
PO BOX 123  
LEAVENWORTH, WA 98826  
(509) 548-5290

**ENGINEER:** TORRENCE ENGINEERING, LLC  
8377 RIMBER ROAD  
CASHERIE, WA 98815  
(509) 782-1897

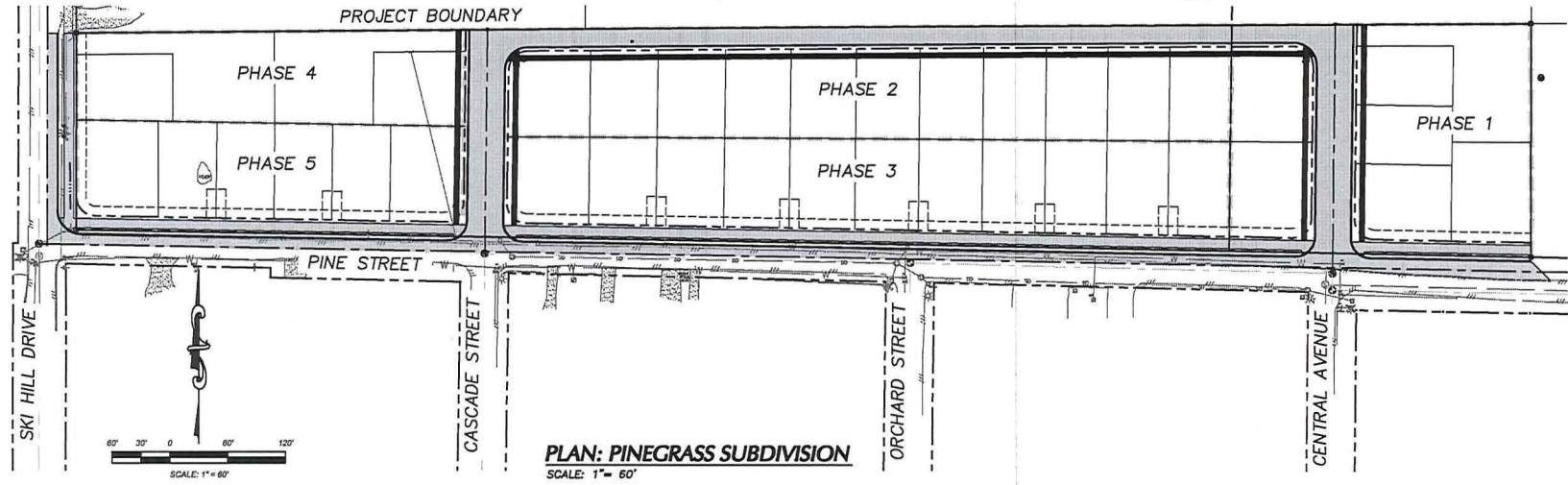
**UTILITY PROVIDERS**

**WATER:** CITY OF LEAVENWORTH  
700 HIGHWAY 2  
LEAVENWORTH, WA 98826  
(509) 548-3273

**SEWER:** CITY OF LEAVENWORTH  
700 HIGHWAY 2  
LEAVENWORTH, WA 98826  
(509) 548-3273

**POWER:** CHELAN COUNTY PUD #1  
327 NORTH WENATCHEE AVE  
WENATCHEE, WA 98801  
(509) 663-9121

**TELEPHONE:** FRONTIER COMMUNICATIONS  
320 EAST PENNY ROAD  
WENATCHEE, WA 98801  
(509) 662-9242



PINEGRASS SUBDIVISION  
PRELIMINARY ENGINEERING  
COVER SHEET

CITY OF LEAVENWORTH, WASHINGTON

REV	DATE	DESCRIPTION

PROJECT NUMBER:  
2015087

DESIGNED/DRAWN BY:  
CTLU

CHECKED BY:  
JAT

ISSUE DATE:  
XX/XX/XXXX

OR: X  
XX

© 2015 Torrence Engineering, LLC. All rights reserved. This drawing is the property of Torrence Engineering, LLC. No part of this drawing may be reproduced without the written permission of Torrence Engineering, LLC.