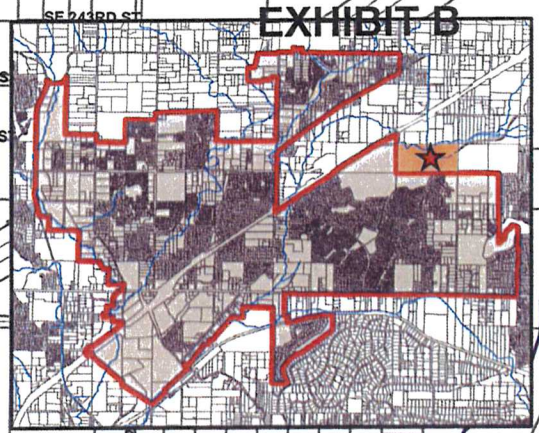
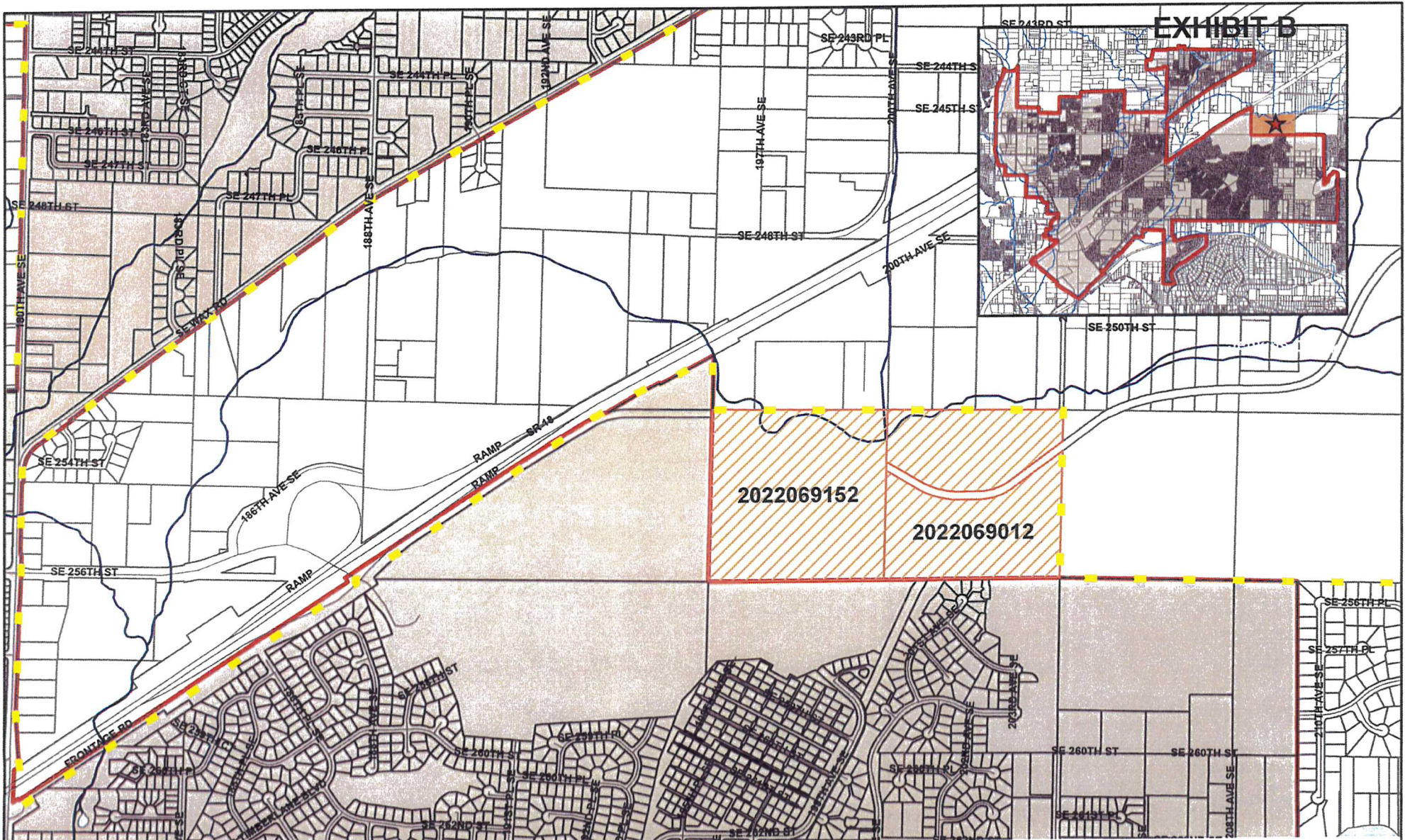






# EXHIBIT B



## City of Covington Annexation Request

-  Potential Annexation Area
-  Streams/Creeks
-  City Limits
-  UGA (Urban Growth Area)

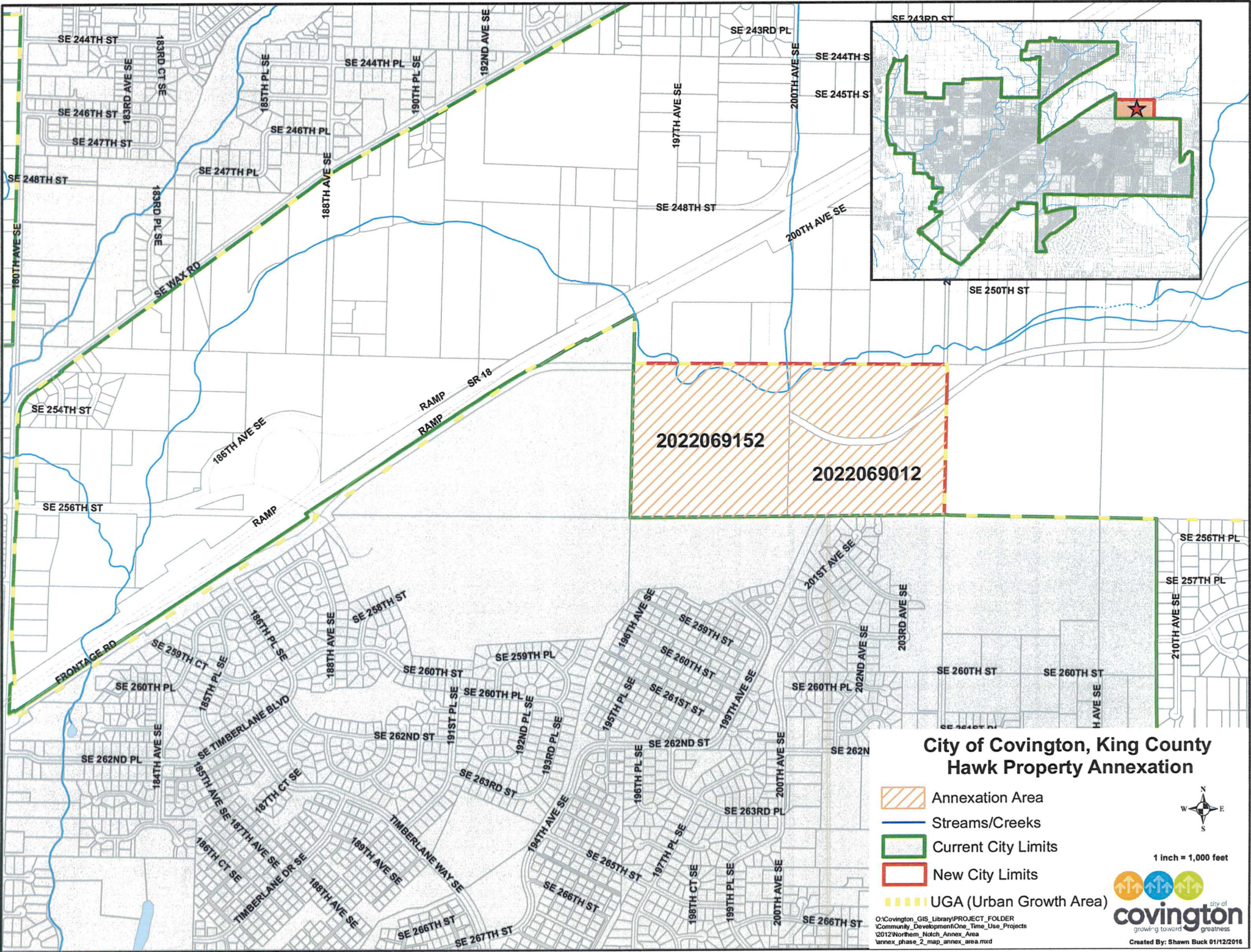


1 inch = 1,000 feet



O:\Covington\_GIS\_Library\PROJECT\_FOLDER  
Community\_Development\One\_Time\_Use\_Projects  
2012\Northern\_Notch\_Annex\_Area  
annex\_phase\_2\_map\_annex\_area.mxd

Created By: Shawn Buck 11/16/2015



### City of Covington, King County Hawk Property Annexation

-  Annexation Area
-  Streams/Creeks
-  Current City Limits
-  New City Limits
-  UGA (Urban Growth Area)



1 inch = 1,000 feet



Q:\Covington\_GIS\_Library\PROJECT\_FOLDER  
Community\_Development\One\_Time\_Use\_Projects  
12012\Northern\_Notch\_Annex\_Area  
annex\_phase\_2\_map\_annex\_area.mxd

Created By: Shawn Buck 01/12/2016