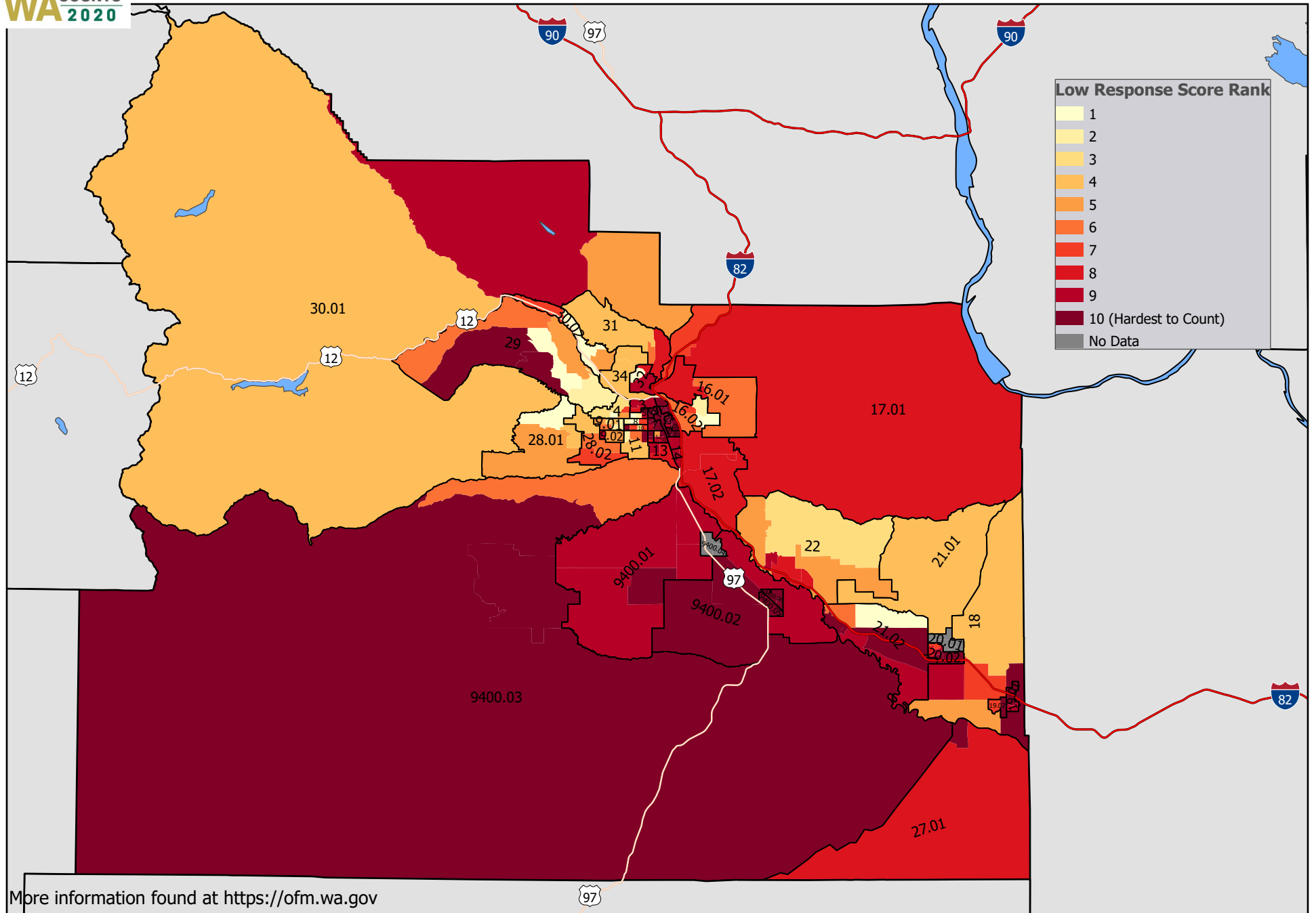




# Yakima County Hard to Count Areas



More information found at <https://ofm.wa.gov>

Map shows colored Census Block Groups within labeled Census Tracts

## 2020 Census Hard to Count Areas: Yakima County

The Low Response Score is a guide for identifying hard to count populations. It is generated by a model using 25 influential variables (e.g., age, marital status, ethnicity) that are expected to be associated with low self response. Examining individual characteristics (see OFM online maps) may help in developing an outreach strategy. Keep in mind, the LRS was developed to predict low self response via the mail rather than the internet. Characteristics, such as internet access and housing change, are not factored into the LRS.

OFM 2020 Census Website: <http://www.ofm.wa.gov/census2020>

OFM's '2020 Census Hard to Count' webpage: <http://bit.ly/OFM2020htc>

OFM hard-to-count population maps (available for 19 separate variables at the tract and block group levels): <http://bit.ly/OFM2020Maps>

Full set of variables is available through the Census Bureau website in the 'Planning Database': [https://www.census.gov/research/data/planning\\_database/2018](https://www.census.gov/research/data/planning_database/2018)

Tract	Low 2010 Mail OFM Housing			Percentage														
	Response Score	Return Rate	Change 2010-18	Total Population			Less Than										Use	
				Population	Under 5	18 to 24	High School	Moved in Last Year	Limited English	Female Household	Public Assistance	Renter						
0001.00	33.6	71.0	40	3,128	7.1	16.6	56.8	2.2	8.1	0.2	0.2	45.6	43.6	20.2	22.4	8.8	86.9	
0015.01	32.7	69.6	111	7,955	13.6	13.3	80.3	1.7	1.6	-	-	54.2	29.9	29.9	31.1	7.7	65.9	
0002.00	32.4	71.1	55	5,816	11.9	13.1	70.1	0.2	2.2	0.1	-	44.8	27.4	26.9	29.9	11.6	72.9	
0006.00	30.8	70.7	30	7,320	11.1	18.5	82.3	0.4	-	0.3	0.1	61.9	20.5	17.0	19.7	13.7	72.4	
0015.02	30.8	74.9	19	3,292	11.6	8.7	86.0	1.4	0.3	0.3	-	61.7	11.0	24.3	17.3	8.3	50.7	
0019.01	29.9	74.2	45	4,105	9.2	10.1	82.1	0.2	-	-	-	53.5	5.0	27.2	24.4	4.3	45.2	
9400.06	29.7	73.7	7	4,833	14.1	12.5	85.0	0.2	10.0	-	-	55.6	11.4	26.0	18.5	8.3	39.9	
0012.01	29.0	68.2	46	4,149	14.0	13.5	52.7	1.4	0.2	0.5	0.4	26.3	28.9	13.1	16.0	8.8	56.0	
0027.01	28.5	70.2	28	2,957	8.1	11.2	86.7	-	0.3	0.5	-	50.2	5.8	9.6	16.5	4.2	28.5	
9400.03	28.4	75.3	41	3,354	7.0	13.5	14.0	0.1	47.1	1.5	0.2	23.5	8.3	2.2	18.2	6.3	30.3	
0020.02	28.3	73.9	161	8,891	10.8	9.6	77.7	0.1	0.4	1.6	-	44.8	12.3	14.1	24.8	6.8	44.1	
9400.02	28.2	72.3	43	4,468	8.3	9.1	37.9	0.4	38.1	-	-	28.7	10.8	7.5	18.0	3.0	43.4	
9400.05	28.1	74.6	36	4,806	10.2	11.5	76.4	1.2	8.0	1.6	-	46.2	9.0	14.3	20.6	4.1	44.7	
0021.02	27.7	72.5	281	8,903	7.5	12.8	78.1	0.2	0.2	-	-	40.9	11.6	12.2	12.5	5.4	33.8	
0007.00	27.1	77.7	64	6,981	10.8	10.1	54.4	1.8	2.7	-	-	30.0	17.6	8.8	19.2	11.4	60.5	
0012.02	27.1	71.7	35	6,339	5.8	12.1	66.6	0.7	-	0.2	-	42.7	14.4	15.9	28.4	5.5	39.9	
0014.00	26.1	78.4	28	3,687	4.5	11.0	51.7	1.4	4.2	-	-	37.4	14.5	11.3	24.9	3.5	33.7	
9400.01	25.9	72.1	73	6,460	8.2	9.4	41.9	1.0	24.0	4.6	0.1	26.6	10.5	5.4	15.8	5.4	30.9	
0013.00	24.6	79.5	21	2,388	9.8	8.6	48.6	-	0.4	0.3	-	36.6	15.2	6.6	15.5	4.6	36.6	
0019.02	24.4	76.4	31	6,791	11.7	9.3	79.8	0.4	-	0.2	-	37.3	9.3	13.8	12.4	6.1	31.3	
0018.00	23.8	82.6	92	7,110	7.9	10.3	61.2	-	1.7	1.8	-	27.9	5.6	7.8	12.4	7.6	20.3	
0029.00	23.6	83.4	125	6,523	4.7	8.3	47.5	0.9	1.3	-	-	27.2	17.1	14.0	11.9	3.2	34.9	
0003.00	23.5	78.2	66	4,296	9.8	9.9	46.7	0.2	3.9	0.2	-	31.9	25.6	9.3	11.4	5.3	60.9	
0022.00	23.1	82.7	140	8,150	7.7	8.2	47.3	-	0.7	0.5	-	27.5	8.2	6.9	9.8	2.6	29.0	
0017.02	23.0	81.8	204	6,039	9.0	8.1	41.6	0.4	2.1	0.3	-	15.5	11.2	3.6	11.3	2.7	20.4	

\*AIAN - American Indian, Alaska Native; NHPI - Native Hawaiian, Pacific Islander

Showing 25 of 45 tracts in the county sorted from highest to lowest LRS.