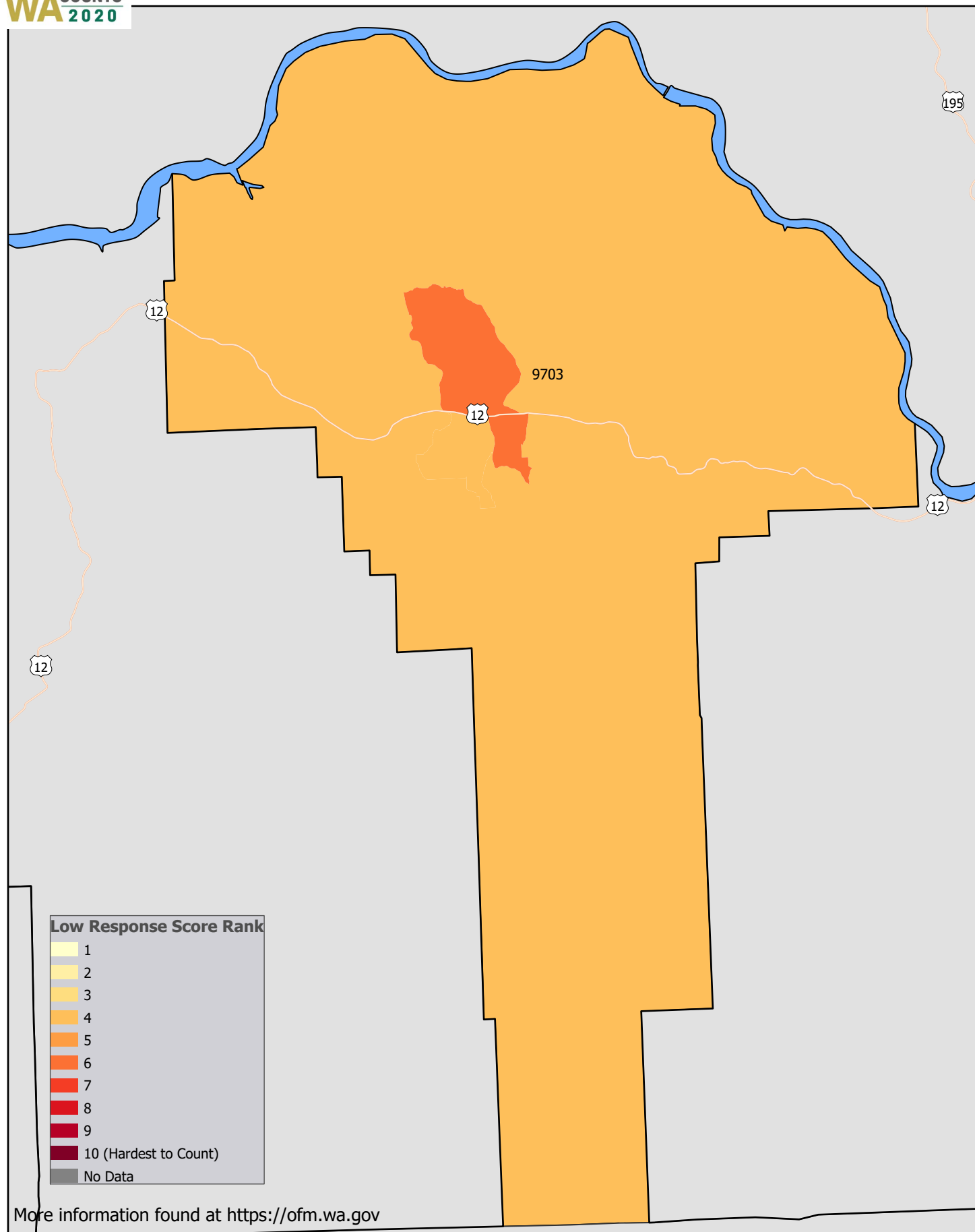




# Garfield County Hard to Count Areas



Map shows colored Census Block Groups within labeled Census Tracts

## 2020 Census Hard to Count Areas: Garfield County

The Low Response Score is a guide for identifying hard to count populations. It is generated by a model using 25 influential variables (e.g., age, marital status, ethnicity) that are expected to be associated with low self response. Examining individual characteristics (see OFM online maps) may help in developing an outreach strategy. Keep in mind, the LRS was developed to predict low self response via the mail rather than the internet. Characteristics, such as internet access and housing change, are not factored into the LRS.

OFM 2020 Census Website: <http://www.ofm.wa.gov/census2020>

OFM's '2020 Census Hard to Count' webpage: <http://bit.ly/OFM2020htc>

OFM hard-to-count population maps (available for 19 separate variables at the tract and block group levels): <http://bit.ly/OFM2020Maps>

Full set of variables is available through the Census Bureau website in the 'Planning Database': [https://www.census.gov/research/data/planning\\_database/2018](https://www.census.gov/research/data/planning_database/2018)

Tract	Low 2010 Mail Response Score	OFM Housing Return Rate	OFM Housing Change 2010-18	Total Population	Percentage												
					Population Under 5	Population 18 to 24	Hispanic	Black	AIAN*	Asian	NHPI*	Less Than High School	Moved in Last Year	Limited English	Female Household	Use Public Assistance	Renter
9703.00	17.4	81.9	8	2,231	7.4	1.9	3.3	-	0.3	0.9	-	3.6	15.8	0.4	5.9	2.9	29.2

\*AIAN - American Indian, Alaska Native; NHPI - Native Hawaiian, Pacific Islander

Showing 1 of 1 tracts in the county sorted from highest to lowest LRS.