

State of Washington

Forecast of the State Population

November 2015 Forecast

Forecasting & Research Division
Office of Financial Management
February 2016



To accommodate persons with disabilities, this document is available in alternative formats by calling the Office of Financial Management at 360-902-0555. TTY/TDD users should contact OFM via the Washington Relay Service at 711 or 1-800-833-6388.

VISIT OUR WEB SITE AT www.ofm.wa.gov.

Table of Contents

1	Part 1: Discussion of forecast model assumptions
1	Fertility
1	Mortality
2	Net migration
2	Figure 1.1: Actual and predicted net migration, 1990–2040
3	Part 2: Discussion of state population change
3	Figure 2.1: Components of population change by decade, 1980–2040
4	Table 2.1: Components of population change, 2000–40
5	Part 3: Discussion of age-specific populations
5	School-age population
5	Figure 3.1: Population characteristics ages 15–17
5	Table 3.1: Population ages 5–17
6	College-age population
6	Figure 3.2: Population characteristics ages 17–22
6	Table 3.2: Population ages 17–22
7	Senior population
7	Figure 3.3: Population characteristics ages 65 and older
7	Table 3.3: Population ages 65 and older
8	Most-elderly population
8	Figure 3.4: Population characteristics ages 85 and older
8	Table 3.4: Population ages 85 and older
9	Part 4: References
10	Part 5: Annual population estimates and forecasts, 2000–40

Forecast of the State Population by Age and Sex: 2010–40

Part 1: Discussion of forecast model assumptions

The Office of Financial Management’s (OFM) state population forecast is produced using a cohort-component model. This is a sophisticated demographic accounting system that starts with the most-recent decennial census counts by single year of age and gender, survives the age and gender-specific cohorts forward in time, incorporates fertility, mortality and migration trends, and forecasts the total population combining all these inputs. The November 2015 forecast reflects important revisions to the assumptions used in the 2014 forecast model.

This document provides annual age- and sex-specific population forecasts¹ from 2010 to 2040. The most recent decennial census serves as the population base. The 2011 to 2015 figures in this report are controlled to OFM’s April 1 postcensal population estimates and actual vital statistics data from the Washington State Department of Health. The forecasts begin in 2016.

Fertility: The total fertility rate (TFR) is expected to stay at or near the current level, as rates of fertility in Washington have remained below prerecession levels. Based on the historical relationship between Washington TFR and that of the United States as a whole, the forecast uses a TFR of 1.9, which is in line with the U.S. Census Bureau’s 2014 forecasted trend in fertility. Decreases in fertility rates for Washington and the United States could be due to increases in female labor force participation and educational attainment. These factors generally result in women delaying childbearing and having smaller families. Delays in births can be seen in the fertility schedule, where fertility rates for 15- to 19-year-old women have dropped dramatically over the past decade.

Despite the decrease in fertility rates in recent years, the number of births continues to grow. Between 2014 and 2015, approximately 88,500 births occurred in Washington, 1,400 more than the previous year. As Washington receives many migrants at the working ages, the number of births is forecasted to continue growing, reaching 97,500 per year by 2030 and 103,100 in 2040. Rates of fertility in Washington are largely influenced by migration, namely the state’s Hispanic population and movers from overseas. Changes in future immigration patterns can affect the state TFR, and will be monitored closely.

Mortality: The state forecast model uses life expectancy at birth to establish rates of mortality for the population. Historically, Washington has higher life expectancy at birth than the United States as a whole, and this trend is expected to continue. In this forecast, Washington’s life expectancy was projected based on the trend of the U.S. Census Bureau’s most-recent life expectancy projection (U.S. Census Bureau, 2014). Between 2015 and 2040, United States life expectancy is expected to rise from 79.4 to 83.0, according to the Census Bureau, while Washington life expectancy is

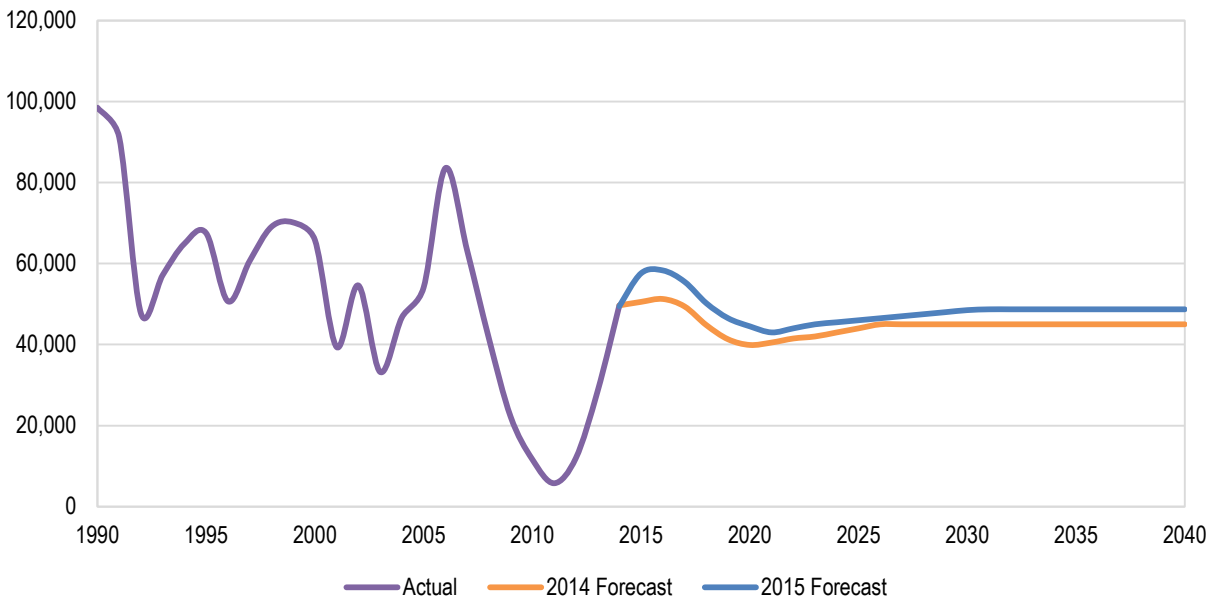
¹ *Population estimates* are figures developed for the current or prior years. Estimates are largely developed from administrative data sets that reflect population change. The assumptions in population estimates generally reflect statistically based and ratio-based relationships between population and indicator data such as housing, tax filers or voters. Thus, estimates are based on actual data and the assumption that previously established relationships will continue. *Population forecasts* are future population expectations. While growth assumptions are usually developed from prior growth trends, the forecast figures are not grounded on actual events and current data. Population forecasts are often developed from forecasts of specific data sets related to population change.

projected to rise from 80.0 to 83.7. Male life expectancy is projected to continue increasing faster than female life expectancy, rising from 77.7 in 2015 to 81.9 in 2040, while females are projected to reach a life expectancy of 85.9 in 2040, up from 82.3. While it has long been accepted that females outlive males, the gender gap has been narrowing in major developed countries over the past two decades due to lifestyle changes and advances in medicine (Mayhew & Smith, 2012).

Even with increases in life expectancy, deaths are projected to occur at a faster rate. As the baby boomer population continues to age, it will experience higher rates of mortality. Washington’s crude death rate is projected to rise from 7.5 deaths per 1,000 persons in 2015 to 8.1 in 2025 and reach 9.7 by 2040.

Net migration: Net migration is an important, but difficult-to-predict component of population change. Although migration typically follows a cyclical pattern related to periods of economic expansion and contraction, some migration, such as military and retiree movement, is not entirely economic. To forecast near-term migration, OFM uses an econometric model that weighs Washington’s relative attractiveness to job seekers against that of California and other states. Near-term migration is transitioned into long-term migration expectations based on historical patterns.

Figure 1.1: Actual and predicted net migration, 1990–2040



Actual and predicted migration is presented in Figure 1.1. The net migration estimate for 2015 is 57,600, approximately 7,100 higher than last year’s forecast. Between 2016 and 2020, net migration is predicted to increase by an additional 28,400 persons compared to the previous forecast. Based on analysis of tax filer data and immigration statistics (Internal Revenue Service, 2011–13; U.S. Department of Homeland Security, 2013), the state’s long-term migration assumption was adjusted upward to 48,700 from a prior level of 45,000.

Part 2: Discussion of state population change

The components of population change are births, deaths and migration. Natural increase is the number of births minus the number of deaths. Net migration is the difference between in- and out-migration. The dynamic nature of population change in Washington is shown in Figure 2.1, with additional detail provided in Table 2.1. Between 2010 and 2040, Washington's population is expected to grow by about 2,250,000 persons, reaching 8,970,500 in 2040. Approximately 60 percent (1,360,000 persons) of this increase is due to net migration while the other 40 percent (890,000 persons) is due to natural increase.

Natural increase is expected to decline from about 35,600 in 2015 to 16,800 by 2040. While births are projected to gradually increase over the forecast horizon, the number of deaths will rise sharply with the aging of the baby boomers. In the future, state population growth will become more dependent upon migration as natural increase moderates.

Figure 2.1: Components of population change by decade, 1980–2040

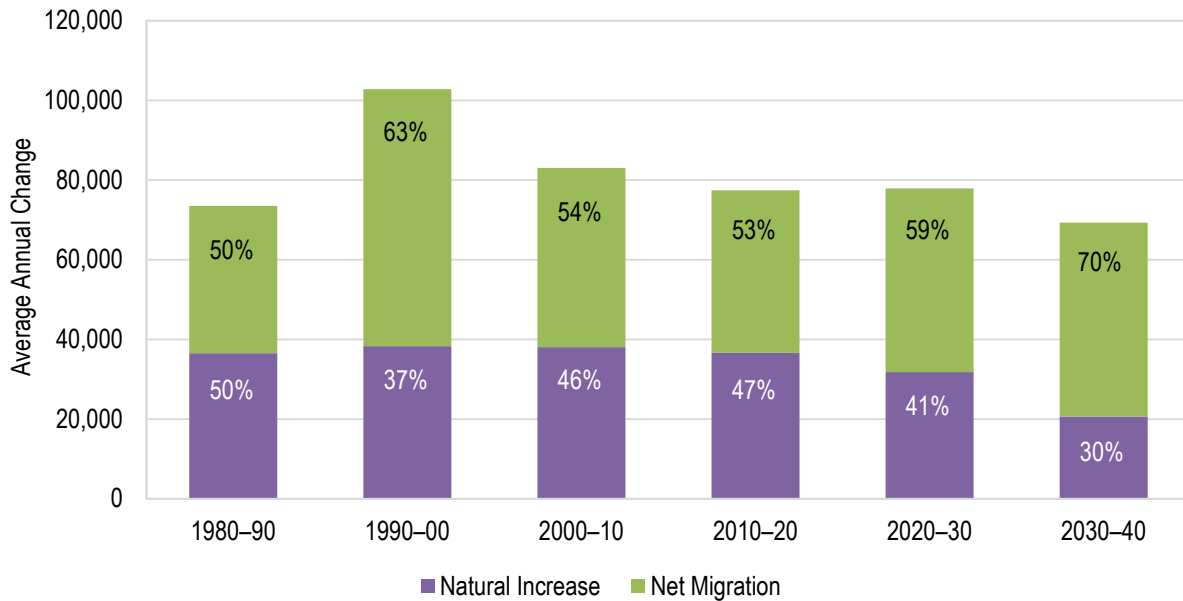


Table 2.1: Components of population change, 2000–40

	April 1 Population at End of Period	Population Change		Components of Change from Previous Period						
		Number	Percent	Births		Deaths		Natural	Net Migration	
				Number	Rate	Number	Rate	Increase	Number	Rate
2000–01	5,970,525	76,382	1.29	80,732	13.61	43,923	7.40	36,809	39,573	6.67
2001–02	6,059,683	89,158	1.48	79,291	13.18	44,900	7.46	34,391	54,767	9.10
2002–03	6,126,885	67,202	1.10	79,069	12.98	44,731	7.34	34,338	32,864	5.39
2003–04	6,208,515	81,630	1.32	80,957	13.13	46,025	7.46	34,932	46,698	7.57
2004–05	6,298,816	90,301	1.44	81,845	13.09	45,609	7.29	36,236	54,065	8.65
2000–05		404,673		401,894		225,188		176,706	227,967	
2005–06	6,420,258	121,442	1.91	83,170	13.08	45,282	7.12	37,888	83,554	13.14
2006–07	6,525,086	104,828	1.62	87,752	13.56	46,161	7.13	41,591	63,237	9.77
2007–08	6,608,245	83,159	1.27	89,568	13.64	47,947	7.30	41,621	41,538	6.33
2008–09	6,672,159	63,914	0.96	89,838	13.53	48,116	7.25	41,722	22,192	3.34
2009–10	6,724,540	52,381	0.78	88,408	13.20	47,672	7.12	40,736	11,645	1.74
2005–10		425,724		438,736		235,178		203,558	222,166	
2010–11	6,767,900	43,360	0.64	86,383	12.80	48,786	7.23	37,597	5,763	0.85
2011–12	6,817,770	49,870	0.73	87,134	12.83	49,231	7.25	37,903	11,967	1.76
2012–13	6,882,400	64,630	0.94	87,250	12.74	51,109	7.46	36,141	28,489	4.16
2013–14	6,968,170	85,770	1.24	87,026	12.57	50,711	7.32	36,315	49,455	7.14
2014–15	7,061,410	93,240	1.33	88,470	12.61	52,825	7.53	35,645	57,595	8.21
2010–15		336,870		436,263		252,662		183,601	153,269	
2015–16	7,155,334	93,924	1.32	88,958	12.51	53,334	7.50	35,624	58,300	8.20
2016–17	7,247,580	92,246	1.28	90,638	12.59	53,892	7.48	36,746	55,500	7.71
2017–18	7,334,530	86,950	1.19	91,484	12.55	54,734	7.51	36,750	50,200	6.89
2018–19	7,417,659	83,129	1.13	92,248	12.51	55,619	7.54	36,629	46,500	6.30
2019–20	7,498,476	80,817	1.08	92,859	12.45	56,542	7.58	36,317	44,500	5.97
2015–20		437,066		456,187		274,121		182,066	255,000	
2020–21	7,577,197	78,721	1.04	93,310	12.38	57,589	7.64	35,721	43,000	5.70
2021–22	7,656,260	79,063	1.04	93,750	12.31	58,687	7.71	35,063	44,000	5.78
2022–23	7,735,627	79,367	1.03	94,227	12.24	59,860	7.78	34,367	45,000	5.85
2023–24	7,814,684	79,057	1.02	94,716	12.18	61,159	7.87	33,557	45,500	5.85
2024–25	7,893,345	78,661	1.00	95,154	12.12	62,493	7.96	32,661	46,000	5.86
2020–25		394,869		471,157		299,788		171,369	223,500	
2025–26	7,971,445	78,100	0.98	95,509	12.04	63,909	8.06	31,600	46,500	5.86
2026–27	8,048,958	77,513	0.97	95,897	11.97	65,384	8.16	30,513	47,000	5.87
2027–28	8,125,851	76,893	0.95	96,366	11.92	66,973	8.28	29,393	47,500	5.87
2028–29	8,201,985	76,134	0.93	96,864	11.86	68,730	8.42	28,134	48,000	5.88
2029–30	8,277,397	75,412	0.92	97,357	11.82	70,445	8.55	26,912	48,500	5.89
2025–30		384,052	9.88	481,993		335,441		146,552	237,500	
2030–31	8,351,552	74,155	0.89	97,542	11.73	72,087	8.67	25,455	48,700	5.86
2031–32	8,424,657	73,105	0.87	98,053	11.69	73,648	8.78	24,405	48,700	5.81
2032–33	8,496,323	71,666	0.85	98,624	11.66	75,658	8.94	22,966	48,700	5.76
2033–34	8,566,720	70,397	0.83	99,212	11.63	77,515	9.09	21,697	48,700	5.71
2034–35	8,636,067	69,347	0.81	99,795	11.60	79,148	9.20	20,647	48,700	5.66
2030–35		358,670		493,226		378,056		115,170	243,500	
2035–36	8,704,444	68,377	0.79	100,392	11.58	80,715	9.31	19,677	48,700	5.62
2036–37	8,772,012	67,568	0.77	101,032	11.56	82,164	9.40	18,868	48,700	5.57
2037–38	8,838,857	66,845	0.76	101,713	11.55	83,568	9.49	18,145	48,700	5.53
2038–39	8,904,977	66,120	0.75	102,381	11.54	84,961	9.58	17,420	48,700	5.49
2039–40	8,970,488	65,511	0.73	103,050	11.53	86,239	9.65	16,811	48,700	5.45
2035–40		334,421		508,568		417,647		90,921	243,500	
2010–40		2,245,948		2,847,394		1,957,715		889,679	1,356,269	

Notes: 1) Unrounded data should not be considered accurate to the last digit. 2) Rates computed per 1,000 population at midpoint of time period. 3) Totals may not add due to rounding.

Part 3: Discussion of age-specific populations

School-age population

Persons ages 5 through 17 represent the school-age population in kindergarten through 12th grade. There are an estimated 1,162,400 young people ages 5 to 17 in 2015. Growth in the school-age population has started to increase. This trend is expected to continue, with an average annual gain of approximately 9,200 persons per year through 2025, at which point the population is expected to reach 1,254,200. This growth is due partly to the grandchildren of the baby boomer generation reaching school-age (the “third wave” of the baby boom). By 2040, the number of school-age persons will be about 1,365,100.

Figure 3.1: Population characteristics ages 5–17

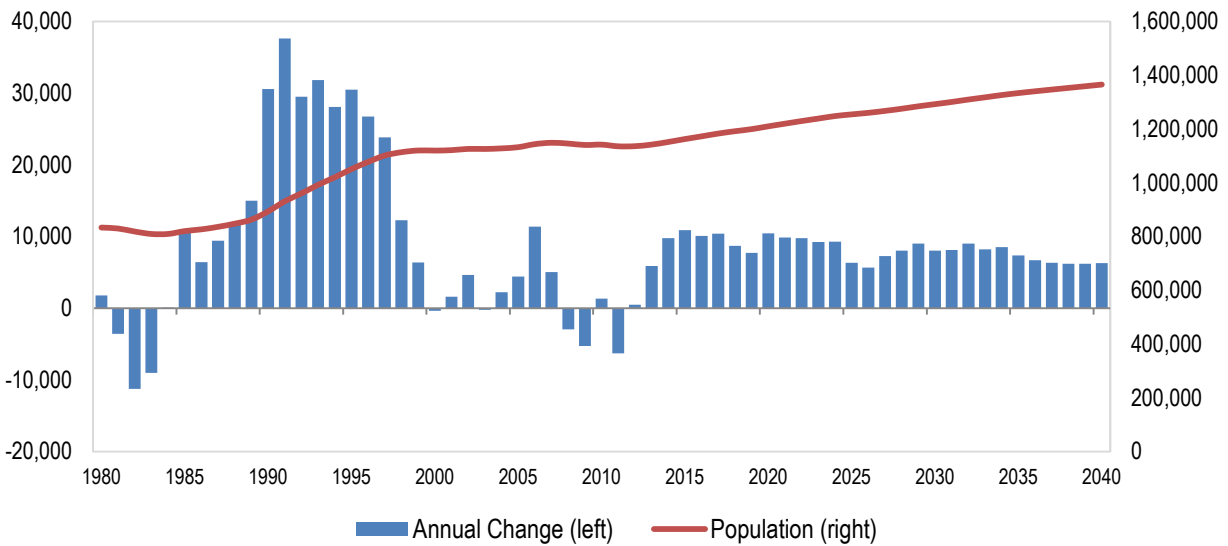


Table 3.1: Population ages 5–17

Year		Year		Year		Year		Year		Year	
1980	833,237	1991	930,866	2001	1,121,127	2011	1,135,411	2021	1,219,643	2031	1,300,398
1981	829,672	1992	960,367	2002	1,125,773	2012	1,135,901	2022	1,229,424	2032	1,309,392
1982	818,415	1993	992,179	2003	1,125,544	2013	1,141,797	2023	1,238,648	2033	1,317,604
1983	809,390	1994	1,020,268	2004	1,127,783	2014	1,151,551	2024	1,247,918	2034	1,326,110
1984	809,474	1995	1,050,730	2005	1,132,188	2015	1,162,414	2025	1,254,246	2035	1,333,450
1985	820,108	1996	1,077,440	2006	1,143,541	2016	1,172,509	2026	1,259,906	2036	1,340,122
1986	826,508	1997	1,101,252	2007	1,148,580	2017	1,182,900	2027	1,267,193	2037	1,346,456
1987	835,931	1998	1,113,531	2008	1,145,620	2018	1,191,599	2028	1,275,217	2038	1,352,641
1988	847,720	1999	1,119,908	2009	1,140,363	2019	1,199,325	2029	1,284,236	2039	1,358,850
1989	862,705	2000	1,119,533	2010	1,141,697	2020	1,209,783	2030	1,292,282	2040	1,365,115
1990	893,252										

College-age population

Persons ages 17 through 22 comprise labor force entrants, young workers and the primary users of postsecondary college and university facilities. There are an estimated 553,100 persons ages 17 through 22 in 2015. After a period of decline throughout most of 1980s and early 1990s, this population began to increase in 1995. Growth this decade has been relatively flat but is expected to pick up again after 2020, reaching about 642,600 by 2040.

Figure 3.2: Population characteristics ages 17–22

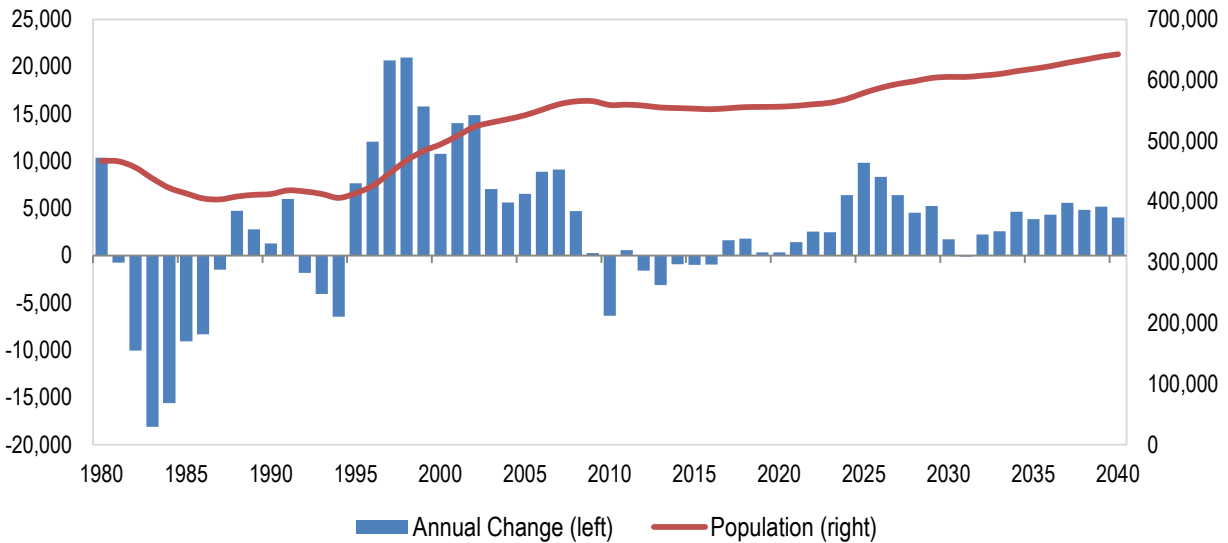


Table 3.2: Population ages 17–22

Year	Year	Year	Year	Year	Year	Year	Year	Year	Year		
1980	467,078	1991	418,608	2001	508,239	2011	559,590	2021	557,703	2031	605,207
1981	466,341	1992	416,794	2002	523,108	2012	558,028	2022	560,260	2032	607,469
1982	456,307	1993	412,742	2003	530,171	2013	554,922	2023	562,753	2033	610,060
1983	438,205	1994	406,289	2004	535,806	2014	554,028	2024	569,167	2034	614,702
1984	422,619	1995	413,954	2005	542,357	2015	553,059	2025	578,987	2035	618,558
1985	413,565	1996	426,011	2006	551,243	2016	552,127	2026	587,326	2036	622,916
1986	405,270	1997	446,675	2007	560,348	2017	553,755	2027	593,747	2037	628,518
1987	403,788	1998	467,650	2008	565,078	2018	555,567	2028	598,281	2038	633,373
1988	408,534	1999	483,447	2009	565,356	2019	555,903	2029	603,543	2039	638,566
1989	411,322	2000	494,214	2010	559,017	2020	556,257	2030	605,289	2040	642,595
1990	412,620										

Senior population

Washington’s population is aging. This major demographic development will have important implications for policymaking and planning at all levels of government. In 2015, there are about 1,027,700 persons ages 65 and older, representing 15 percent of Washington’s total population. By 2040, the elderly population is forecast to reach 1,996,100, representing 22 percent of the state’s total population. The sharp spike in 65-and-older population in 2011 corresponds to a similarly sharp spike in births in 1946, exactly one year after American service members returned home from World War II. These children of 1946 turned 65 in 2011, leading the baby boomer generation into retirement.

Figure 3.3: Population characteristics ages 65 and older

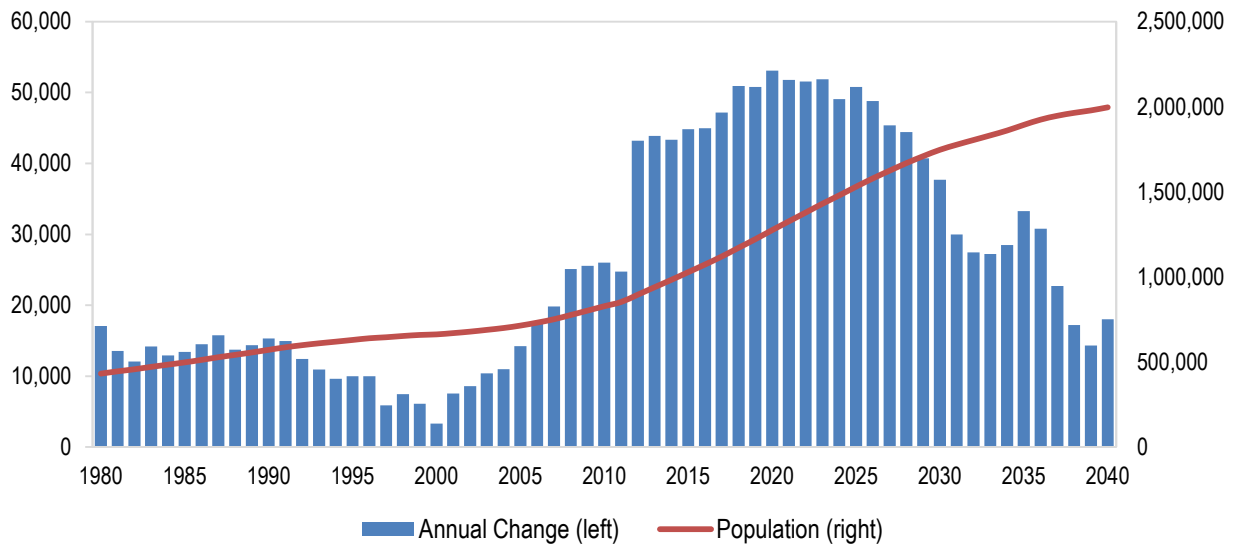


Table 3.3: Population ages 65 and older

Year	Year	Year	Year	Year	Year	Year	Year				
1980	431,562	1991	586,369	2001	669,684	2011	852,414	2021	1,326,399	2031	1,776,621
1981	445,116	1992	598,818	2002	678,270	2012	895,629	2022	1,377,939	2032	1,804,058
1982	457,173	1993	609,764	2003	688,680	2013	939,496	2023	1,429,821	2033	1,831,304
1983	471,342	1994	619,380	2004	699,641	2014	982,835	2024	1,478,894	2034	1,859,802
1984	484,286	1995	629,389	2005	713,853	2015	1,027,664	2025	1,529,670	2035	1,893,070
1985	497,708	1996	639,389	2006	731,241	2016	1,072,635	2026	1,578,464	2036	1,923,855
1986	512,219	1997	645,253	2007	751,050	2017	1,119,812	2027	1,623,851	2037	1,946,549
1987	527,983	1998	652,707	2008	776,144	2018	1,170,730	2028	1,668,268	2038	1,963,737
1988	541,731	1999	658,832	2009	801,683	2019	1,221,524	2029	1,708,975	2039	1,978,050
1989	556,077	2000	662,141	2010	827,677	2020	1,274,626	2030	1,746,658	2040	1,996,062
1990	571,405										

Most-elderly population

Providing for the long-term care needs of the population ages 85 and older will have important fiscal implications for Washington and the nation as a whole. This population, numbering about 129,300 in 2015, is expected to increase by 274,300 persons over the forecast horizon, reaching 403,700 by 2040. Much of this growth will occur after 2020 as the baby boom cohort starts to enter the most-elderly age group, with a 79,900-person increase from 2020 to 2030 and an 181,600-person increase from 2030 to 2040.

Figure 3.4: Population characteristics ages 85 and older

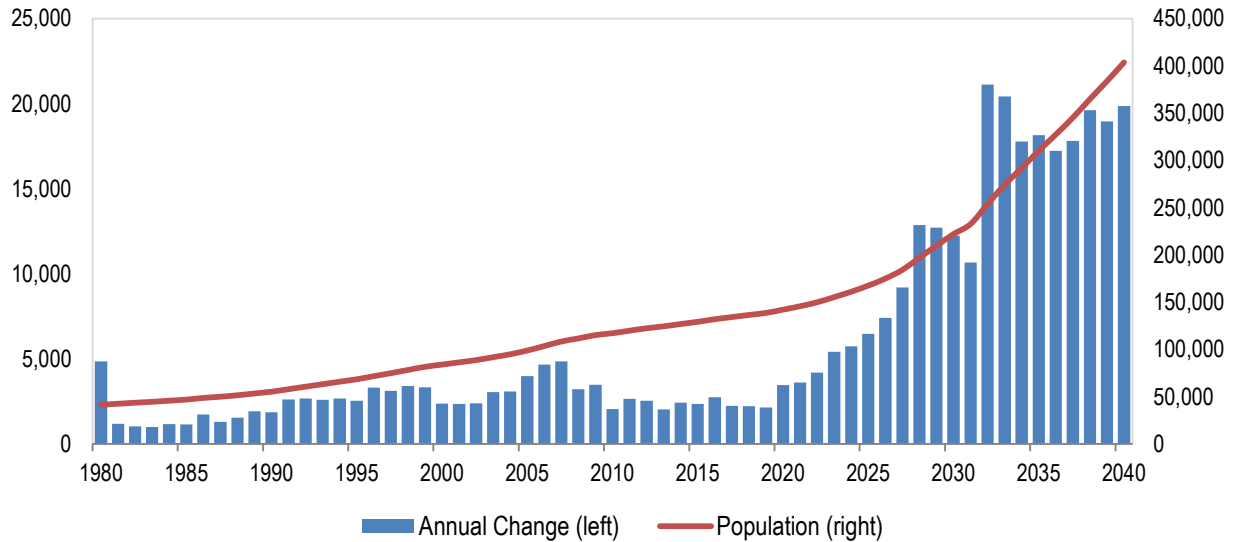


Table 3.4: Population ages 85 and older

Year	Year	Year	Year	Year	Year	Year	Year	Year	Year	Year	
1980	41,476	1991	58,053	2001	86,433	2011	119,935	2021	145,772	2031	232,699
1981	42,666	1992	60,721	2002	88,833	2012	122,488	2022	149,965	2032	253,828
1982	43,716	1993	63,328	2003	91,889	2013	124,522	2023	155,394	2033	274,246
1983	44,712	1994	65,999	2004	94,986	2014	126,963	2024	161,130	2034	292,013
1984	45,892	1995	68,538	2005	98,973	2015	129,316	2025	167,610	2035	310,162
1985	47,050	1996	71,847	2006	103,645	2016	132,074	2026	175,019	2036	327,397
1986	48,791	1997	74,967	2007	108,506	2017	134,313	2027	184,215	2037	345,211
1987	50,087	1998	78,375	2008	111,737	2018	136,544	2028	197,087	2038	364,828
1988	51,634	1999	81,705	2009	115,221	2019	138,698	2029	209,796	2039	383,793
1989	53,558	2000	84,083	2010	117,271	2020	142,156	2030	222,038	2040	403,653
1990	55,427										

Part 4: References

Internal Revenue Service (2011–13). Statistics of Income Tax Stats – Migration Data (Data files and code book). Retrieved from <https://www.irs.gov/uac/SOI-Tax-Stats-Migration-Data>.

Mayhew, L., & Smith, D. (2012). Gender convergence in human survival and the postponement of death. Actuarial Research Paper No. 200. Retrieved from <http://openaccess.city.ac.uk/2331/1/200ARP.pdf>.

U.S. Census Bureau (2014). National Population Projections [Data files and code book]. Retrieved from <https://www.census.gov/population/projections/data/national/2014.html>.

U.S. Department of Homeland Security (2013). Yearbook of Immigration Statistics. Retrieved from <http://www.dhs.gov/publication/yearbook-2013>.

Part 5: Annual population estimates and forecasts, 2000–40

The following tables present annual population estimates and forecasts by age and sex for the years 2000–40. Figures for the years 2000 and 2010 reflect actual decennial census data. Figures for 2001–09 reflect OFM’s official intercensal estimates. Figures for years 2011–15 represent OFM’s postcensal estimates. The forecast years are 2016–40.

Population by Age and Sex
Population Census for April 1, 2000
State of Washington

Five Year Age Groups

Age	Total	Male	Female
Total	5,894,143	2,934,306	2,959,837
0-4	394,304	202,064	192,240
5-9	425,909	218,500	207,409
10-14	434,836	222,937	211,899
15-19	427,964	220,407	207,557
20-24	390,191	200,815	189,376
25-29	403,652	206,789	196,863
30-34	437,480	223,413	214,067
35-39	483,948	244,034	239,914
40-44	491,145	246,268	244,877
45-49	454,231	225,512	228,719
50-54	391,757	195,063	196,694
55-59	285,510	142,508	143,002
60-64	211,075	104,014	107,061
65-69	176,225	84,294	91,931
70-74	160,941	72,628	88,313
75-79	142,705	60,152	82,553
80-84	98,187	38,692	59,495
85+	84,083	26,216	57,867

Percent of Total Population

Age	Total	Male	Female
Total	100.0000	49.7834	50.2166
0-4	6.6898	3.4282	3.2615
5-9	7.2260	3.7071	3.5189
10-14	7.3774	3.7823	3.5951
15-19	7.2608	3.7394	3.5214
20-24	6.6200	3.4070	3.2130
25-29	6.8484	3.5084	3.3400
30-34	7.4223	3.7904	3.6319
35-39	8.2107	4.1403	4.0704
40-44	8.3328	4.1782	4.1546
45-49	7.7065	3.8260	3.8804
50-54	6.6465	3.3094	3.3371
55-59	4.8440	2.4178	2.4262
60-64	3.5811	1.7647	1.8164
65-69	2.9898	1.4301	1.5597
70-74	2.7305	1.2322	1.4983
75-79	2.4211	1.0205	1.4006
80-84	1.6658	0.6564	1.0094
85+	1.4266	0.4448	0.9818

Components of Change

	Total	Male	Female
Births	79,853	40,884	38,969
Deaths	43,743	22,770	20,973
Natural Increase	36,110	18,114	17,996
Migrants	27,198	14,019	13,179
Total Change	63,308	32,133	31,175

Components as % of Previous Year's Total Population

	Total	Male	Female
Births	1.3695	0.7012	0.6683
Deaths	0.7502	0.3905	0.3597
Natural Increase	0.6193	0.3107	0.3086
Net Migration	0.4665	0.2404	0.2260
Total Change	1.0857	0.5511	0.5347

Single Year of Age

Age	Total	Male	Female	Age	Total	Male	Female	Age	Total	Male	Female
0-24	2,073,204	1,064,723	1,008,481	12	86,386	44,250	42,136	60-65	248,870	122,384	126,486
0	77,740	39,904	37,836	13	85,376	43,635	41,741	60	46,585	23,091	23,494
1	78,919	40,388	38,531	14	87,248	44,598	42,650	61	43,741	21,747	21,994
2	78,816	40,412	38,404	15	86,437	44,451	41,986	62	42,554	21,038	21,516
3	78,895	40,365	38,530	16	85,846	44,376	41,470	63	39,796	19,471	20,325
4	79,934	40,995	38,939	17	86,505	44,727	41,778	64	38,399	18,667	19,732
5	81,150	41,538	39,612	18	84,939	43,865	41,074	65	37,795	18,370	19,425
6	82,412	42,257	40,155	19	84,237	42,988	41,249				
7	85,856	44,219	41,637	20	83,127	42,860	40,267				
8	87,624	44,926	42,698	21	78,455	40,606	37,849				
9	88,867	45,560	43,307	22	76,951	39,342	37,609				
10	89,315	46,011	43,304	23	76,272	39,277	36,995				
11	86,511	44,443	42,068	24	75,386	38,730	36,656				

Median Age

Total	Male	Female
35.3	34.4	36.3

Notes:

- 1) Unrounded data should not be considered accurate to the last digit.
- 2) Single year of age data are provided to develop a variety of age groupings. Individual age numbers should not be considered reliable.
- 3) Totals may not add due to rounding.

Population by Age and Sex
Population Intercensal Estimate for April 1, 2001
State of Washington

Five Year Age Groups

Age	Total	Male	Female
Total	5,970,525	2,973,555	2,996,970
0-4	397,777	203,747	194,030
5-9	420,675	215,828	204,847
10-14	439,363	225,409	213,954
15-19	434,077	223,568	210,509
20-24	404,117	207,504	196,613
25-29	393,849	201,728	192,121
30-34	444,628	227,422	217,206
35-39	473,775	239,501	234,274
40-44	495,474	248,541	246,933
45-49	465,706	231,485	234,221
50-54	414,081	205,643	208,438
55-59	297,691	148,160	149,531
60-64	219,628	108,500	111,128
65-69	177,930	85,259	92,671
70-74	161,301	73,611	87,690
75-79	142,087	60,142	81,945
80-84	101,933	40,110	61,823
85+	86,433	27,397	59,036

Percent of Total Population

Age	Total	Male	Female
Total	100.0000	49.8039	50.1961
0-4	6.6623	3.4125	3.2498
5-9	7.0459	3.6149	3.4310
10-14	7.3589	3.7754	3.5835
15-19	7.2703	3.7445	3.5258
20-24	6.7685	3.4755	3.2931
25-29	6.5966	3.3787	3.2178
30-34	7.4471	3.8091	3.6380
35-39	7.9352	4.0114	3.9238
40-44	8.2987	4.1628	4.1359
45-49	7.8001	3.8771	3.9230
50-54	6.9354	3.4443	3.4911
55-59	4.9860	2.4815	2.5045
60-64	3.6785	1.8173	1.8613
65-69	2.9801	1.4280	1.5521
70-74	2.7016	1.2329	1.4687
75-79	2.3798	1.0073	1.3725
80-84	1.7073	0.6718	1.0355
85+	1.4477	0.4589	0.9888

Components of Change

	Total	Male	Female
Births	80,732	41,334	39,398
Deaths	43,923	22,120	21,803
Natural Increase	36,809	19,214	17,595
Net Migration	39,573	20,035	19,538
Total Change	76,382	39,249	37,133

Components as % of Previous Year's Total Population

	Total	Male	Female
Births	1.3697	0.7013	0.6684
Deaths	0.7452	0.3753	0.3699
Natural Increase	0.6245	0.3260	0.2985
Net Migration	0.6714	0.3399	0.3315
Total Change	1.2959	0.6659	0.6300

Single Year of Age

Age	Total	Male	Female	Age	Total	Male	Female	Age	Total	Male	Female
0-24	2,096,009	1,076,056	1,019,953	12	87,066	44,735	42,331	60-65	257,680	126,939	130,741
0	80,281	41,082	39,199	13	86,905	44,514	42,391	60	48,192	23,995	24,197
1	78,230	40,151	38,079	14	85,877	43,888	41,989	61	46,301	22,896	23,405
2	79,822	40,849	38,973	15	87,744	44,845	42,899	62	43,441	21,541	21,900
3	79,699	40,865	38,834	16	86,959	44,712	42,247	63	42,230	20,819	21,411
4	79,745	40,800	38,945	17	86,386	44,634	41,752	64	39,464	19,249	20,215
5	80,719	41,396	39,323	18	87,137	45,041	42,096	65	38,052	18,439	19,613
6	81,883	41,913	39,970	19	85,851	44,336	41,515				
7	83,129	42,624	40,505	20	85,184	43,473	41,711				
8	86,589	44,595	41,994	21	84,207	43,383	40,824				
9	88,355	45,300	43,055	22	79,474	41,083	38,391				
10	89,599	45,935	43,664	23	77,959	39,807	38,152				
11	89,916	46,337	43,579	24	77,293	39,758	37,535				

Median Age

Total	Male	Female
35.6	34.6	36.6

Notes:

- 1) Unrounded data should not be considered accurate to the last digit.
- 2) Single year of age data are provided to develop a variety of age groupings. Individual age numbers should not be considered reliable.
- 3) Totals may not add due to rounding.

Population by Age and Sex
Population Intercensal Estimate for April 1, 2002
State of Washington

Five Year Age Groups

Age	Total	Male	Female
Total	6,059,683	3,019,176	3,040,507
0-4	401,260	205,533	195,727
5-9	417,105	213,909	203,196
10-14	445,895	228,929	216,966
15-19	438,488	225,330	213,158
20-24	420,015	215,637	204,378
25-29	393,588	201,557	192,031
30-34	449,777	230,583	219,194
35-39	463,460	234,545	228,915
40-44	498,006	249,966	248,040
45-49	476,729	237,032	239,697
50-54	420,372	208,513	211,859
55-59	325,691	161,712	163,979
60-64	231,027	114,370	116,657
65-69	181,790	87,440	94,350
70-74	161,250	74,269	86,981
75-79	140,444	59,446	80,998
80-84	105,953	41,999	63,954
85+	88,833	28,406	60,427

Percent of Total Population

Age	Total	Male	Female
Total	100.0000	49.8240	50.1760
0-4	6.6218	3.3918	3.2300
5-9	6.8833	3.5300	3.3532
10-14	7.3584	3.7779	3.5805
15-19	7.2362	3.7185	3.5176
20-24	6.9313	3.5586	3.3728
25-29	6.4952	3.3262	3.1690
30-34	7.4225	3.8052	3.6173
35-39	7.6483	3.8706	3.7777
40-44	8.2184	4.1251	4.0933
45-49	7.8672	3.9116	3.9556
50-54	6.9372	3.4410	3.4962
55-59	5.3747	2.6687	2.7061
60-64	3.8125	1.8874	1.9251
65-69	3.0000	1.4430	1.5570
70-74	2.6610	1.2256	1.4354
75-79	2.3177	0.9810	1.3367
80-84	1.7485	0.6931	1.0554
85+	1.4660	0.4688	0.9972

Components of Change

	Total	Male	Female
Births	79,291	40,596	38,695
Deaths	44,900	22,697	22,203
Natural Increase	34,391	17,899	16,492
Net Migration	54,767	27,722	27,045
Total Change	89,158	45,621	43,537

Components as % of Previous Year's Total Population

	Total	Male	Female
Births	1.3280	0.6799	0.6481
Deaths	0.7520	0.3802	0.3719
Natural Increase	0.5760	0.2998	0.2762
Net Migration	0.9173	0.4643	0.4530
Total Change	1.4933	0.7641	0.7292

Single Year of Age

Age	Total	Male	Female	Age	Total	Male	Female	Age	Total	Male	Female
0-24	2,122,763	1,089,338	1,033,425	12	90,710	46,756	43,954	60-65	270,189	133,409	136,780
0	78,848	40,348	38,500	13	87,789	45,105	42,684	60	51,930	25,899	26,031
1	81,004	41,448	39,556	14	87,612	44,873	42,739	61	47,956	23,818	24,138
2	79,469	40,785	38,684	15	86,558	44,230	42,328	62	46,041	22,705	23,336
3	81,056	41,480	39,576	16	88,488	45,218	43,270	63	43,166	21,341	21,825
4	80,883	41,472	39,411	17	87,727	45,081	42,646	64	41,934	20,607	21,327
5	80,824	41,351	39,473	18	87,273	45,080	42,193	65	39,162	19,039	20,123
6	81,725	41,912	39,813	19	88,442	45,721	42,721				
7	82,864	42,414	40,450	20	87,200	45,041	42,159				
8	84,108	43,125	40,983	21	86,732	44,222	42,510				
9	87,584	45,107	42,477	22	85,734	44,104	41,630				
10	89,356	45,813	43,543	23	80,931	41,773	39,158				
11	90,428	46,382	44,046	24	79,418	40,497	38,921				

Median Age

Total	Male	Female
35.7	34.7	36.8

Notes:

- 1) Unrounded data should not be considered accurate to the last digit.
- 2) Single year of age data are provided to develop a variety of age groupings. Individual age numbers should not be considered reliable.
- 3) Totals may not add due to rounding.

Population by Age and Sex
Population Intercensal Estimate for April 1, 2003
State of Washington

Five Year Age Groups

Age	Total	Male	Female
Total	6,126,885	3,053,608	3,073,277
0-4	401,585	205,613	195,972
5-9	413,358	211,786	201,572
10-14	448,265	230,410	217,855
15-19	440,180	225,729	214,451
20-24	433,409	222,937	210,472
25-29	397,574	203,545	194,029
30-34	445,299	228,188	217,111
35-39	454,169	230,322	223,847
40-44	496,279	249,138	247,141
45-49	484,465	241,398	243,067
50-54	429,961	213,026	216,935
55-59	346,582	171,481	175,101
60-64	247,079	122,430	124,649
65-69	187,756	90,655	97,101
70-74	161,031	74,631	86,400
75-79	140,129	59,856	80,273
80-84	107,875	42,751	65,124
85+	91,889	29,712	62,177

Percent of Total Population

Age	Total	Male	Female
Total	100.0000	49.8395	50.1605
0-4	6.5545	3.3559	3.1986
5-9	6.7466	3.4567	3.2900
10-14	7.3164	3.7606	3.5557
15-19	7.1844	3.6842	3.5002
20-24	7.0739	3.6387	3.4352
25-29	6.4890	3.3222	3.1668
30-34	7.2680	3.7244	3.5436
35-39	7.4127	3.7592	3.6535
40-44	8.1000	4.0663	4.0337
45-49	7.9072	3.9400	3.9672
50-54	7.0176	3.4769	3.5407
55-59	5.6567	2.7988	2.8579
60-64	4.0327	1.9982	2.0345
65-69	3.0645	1.4796	1.5848
70-74	2.6283	1.2181	1.4102
75-79	2.2871	0.9769	1.3102
80-84	1.7607	0.6978	1.0629
85+	1.4998	0.4849	1.0148

Components of Change

	Total	Male	Female
Births	79,069	40,483	38,586
Deaths	44,731	22,682	22,049
Natural Increase	34,338	17,801	16,537
Net Migration	32,864	16,631	16,233
Total Change	67,202	34,432	32,770

Components as % of Previous Year's Total Population

	Total	Male	Female
Births	1.3048	0.6681	0.6368
Deaths	0.7382	0.3743	0.3639
Natural Increase	0.5667	0.2938	0.2729
Net Migration	0.5423	0.2745	0.2679
Total Change	1.1090	0.5682	0.5408

Single Year of Age

Age	Total	Male	Female	Age	Total	Male	Female	Age	Total	Male	Female
0-24	2,136,797	1,096,475	1,040,322	12	90,898	46,629	44,269	60-65	288,618	142,781	145,837
0	78,639	40,242	38,397	13	91,151	46,982	44,169	60	59,412	29,615	29,797
1	79,239	40,544	38,695	14	88,204	45,315	42,889	61	51,594	25,673	25,921
2	81,753	41,830	39,923	15	88,012	45,072	42,940	62	47,609	23,586	24,023
3	80,189	41,154	39,035	16	86,976	44,436	42,540	63	45,675	22,463	23,212
4	81,765	41,843	39,922	17	88,933	45,426	43,507	64	42,789	21,093	21,696
5	81,527	41,801	39,726	18	88,238	45,331	42,907	65	41,539	20,351	21,188
6	81,416	41,655	39,761	19	88,021	45,464	42,557				
7	82,301	42,207	40,094	20	89,236	46,130	43,106				
8	83,438	42,707	40,731	21	88,108	45,478	42,630				
9	84,676	43,416	41,260	22	87,635	44,634	43,001				
10	88,169	45,408	42,761	23	86,632	44,517	42,115				
11	89,843	46,076	43,767	24	81,798	42,178	39,620				

Median Age

Total	Male	Female
36.0	35.0	37.0

Notes:

- 1) Unrounded data should not be considered accurate to the last digit.
- 2) Single year of age data are provided to develop a variety of age groupings. Individual age numbers should not be considered reliable.
- 3) Totals may not add due to rounding.

Population by Age and Sex
Population Intercensal Estimate for April 1, 2004
State of Washington

Five Year Age Groups

Age	Total	Male	Female
Total	6,208,515	3,095,277	3,113,238
0-4	404,004	206,844	197,160
5-9	414,638	212,357	202,281
10-14	448,123	230,271	217,852
15-19	444,042	227,419	216,623
20-24	446,114	229,349	216,765
25-29	407,419	208,837	198,582
30-34	437,975	224,066	213,909
35-39	449,687	228,830	220,857
40-44	497,224	250,153	247,071
45-49	489,178	244,063	245,115
50-54	441,985	218,361	223,624
55-59	364,664	180,308	184,356
60-64	263,821	130,480	133,341
65-69	194,889	94,479	100,410
70-74	160,892	74,917	85,975
75-79	139,245	59,984	79,261
80-84	109,629	43,601	66,028
85+	94,986	30,958	64,028

Percent of Total Population

Age	Total	Male	Female
Total	100.0000	49.8554	50.1446
0-4	6.5073	3.3316	3.1756
5-9	6.6785	3.4204	3.2581
10-14	7.2179	3.7090	3.5089
15-19	7.1521	3.6630	3.4891
20-24	7.1855	3.6941	3.4914
25-29	6.5623	3.3637	3.1985
30-34	7.0544	3.6090	3.4454
35-39	7.2431	3.6857	3.5573
40-44	8.0087	4.0292	3.9796
45-49	7.8791	3.9311	3.9480
50-54	7.1190	3.5171	3.6019
55-59	5.8736	2.9042	2.9694
60-64	4.2493	2.1016	2.1477
65-69	3.1391	1.5218	1.6173
70-74	2.5915	1.2067	1.3848
75-79	2.2428	0.9662	1.2766
80-84	1.7658	0.7023	1.0635
85+	1.5299	0.4986	1.0313

Components of Change

	Total	Male	Female
Births	80,957	41,449	39,508
Deaths	46,025	23,407	22,618
Natural Increase	34,932	18,042	16,890
Net Migration	46,698	23,627	23,071
Total Change	81,630	41,669	39,961

Components as % of Previous Year's Total Population

	Total	Male	Female
Births	1.3213	0.6765	0.6448
Deaths	0.7512	0.3820	0.3692
Natural Increase	0.5701	0.2945	0.2757
Net Migration	0.7622	0.3856	0.3766
Total Change	1.3323	0.6801	0.6522

Single Year of Age

Age	Total	Male	Female	Age	Total	Male	Female	Age	Total	Male	Female
0-24	2,156,921	1,106,240	1,050,681	12	90,503	46,423	44,080	60-65	306,257	151,334	154,923
0	80,514	41,201	39,313	13	91,527	46,950	44,577	60	60,844	30,065	30,779
1	79,220	40,535	38,685	14	91,768	47,296	44,472	61	59,088	29,384	29,704
2	80,281	41,076	39,205	15	88,784	45,607	43,177	62	51,276	25,448	25,828
3	82,806	42,368	40,438	16	88,627	45,379	43,248	63	47,283	23,358	23,925
4	81,183	41,664	39,519	17	87,611	44,738	42,873	64	45,330	22,225	23,105
5	82,689	42,315	40,374	18	89,688	45,799	43,889	65	42,436	20,854	21,582
6	82,373	42,235	40,138	19	89,332	45,896	43,436				
7	82,230	42,071	40,159	20	89,165	46,060	43,105				
8	83,108	42,620	40,488	21	90,578	46,786	43,792				
9	84,238	43,116	41,122	22	89,432	46,101	43,331				
10	85,476	43,826	41,650	23	88,965	45,250	43,715				
11	88,849	45,776	43,073	24	87,974	45,152	42,822				

Median Age

Total	Male	Female
36.1	35.2	37.2

Notes:

- 1) Unrounded data should not be considered accurate to the last digit.
- 2) Single year of age data are provided to develop a variety of age groupings. Individual age numbers should not be considered reliable.
- 3) Totals may not add due to rounding.

Population by Age and Sex
Population Intercensal Estimate for April 1, 2005
State of Washington

Five Year Age Groups

Age	Total	Male	Female
Total	6,298,816	3,141,265	3,157,551
0-4	408,490	209,015	199,475
5-9	416,405	213,374	203,031
10-14	444,441	228,089	216,352
15-19	450,785	230,979	219,806
20-24	455,094	233,785	221,309
25-29	420,053	215,125	204,928
30-34	428,047	218,854	209,193
35-39	453,481	231,359	222,122
40-44	492,959	248,166	244,793
45-49	495,047	247,547	247,500
50-54	453,853	224,190	229,663
55-59	387,518	191,463	196,055
60-64	278,790	137,631	141,159
65-69	202,221	98,163	104,058
70-74	162,562	76,117	86,445
75-79	139,057	60,586	78,471
80-84	111,040	44,264	66,776
85+	98,973	32,558	66,415

Percent of Total Population

Age	Total	Male	Female
Total	100.0000	49.8707	50.1293
0-4	6.4852	3.3183	3.1669
5-9	6.6108	3.3875	3.2233
10-14	7.0559	3.6211	3.4348
15-19	7.1567	3.6670	3.4896
20-24	7.2251	3.7116	3.5135
25-29	6.6688	3.4153	3.2534
30-34	6.7957	3.4745	3.3211
35-39	7.1995	3.6731	3.5264
40-44	7.8262	3.9399	3.8863
45-49	7.8594	3.9301	3.9293
50-54	7.2054	3.5592	3.6461
55-59	6.1522	3.0397	3.1126
60-64	4.4261	2.1850	2.2410
65-69	3.2105	1.5584	1.6520
70-74	2.5808	1.2084	1.3724
75-79	2.2077	0.9619	1.2458
80-84	1.7629	0.7027	1.0601
85+	1.5713	0.5169	1.0544

Components of Change

	Total	Male	Female
Births	81,845	41,904	39,941
Deaths	45,609	23,257	22,352
Natural Increase	36,236	18,647	17,589
Net Migration	54,065	27,341	26,724
Total Change	90,301	45,988	44,313

Components as % of Previous Year's Total Population

	Total	Male	Female
Births	1.3183	0.6749	0.6433
Deaths	0.7346	0.3746	0.3600
Natural Increase	0.5837	0.3003	0.2833
Net Migration	0.8708	0.4404	0.4304
Total Change	1.4545	0.7407	0.7137

Single Year of Age

Age	Total	Male	Female	Age	Total	Male	Female	Age	Total	Male	Female
0-24	2,175,215	1,115,242	1,059,973	12	89,599	46,172	43,427	60-65	323,793	159,628	164,165
0	81,412	41,662	39,750	13	91,222	46,790	44,432	60	61,506	30,261	31,245
1	81,209	41,553	39,656	14	92,239	47,312	44,927	61	60,566	29,857	30,709
2	80,418	41,147	39,271	15	92,463	47,648	44,815	62	58,776	29,153	29,623
3	81,467	41,682	39,785	16	89,502	45,968	43,534	63	50,971	25,226	25,745
4	83,984	42,971	41,013	17	89,377	45,738	43,639	64	46,971	23,134	23,837
5	82,235	42,203	40,032	18	88,473	45,166	43,307	65	45,003	21,997	23,006
6	83,674	42,819	40,855	19	90,970	46,459	44,511				
7	83,318	42,719	40,599	20	90,674	46,594	44,080				
8	83,156	42,544	40,612	21	90,714	46,820	43,894				
9	84,022	43,089	40,933	22	92,149	47,530	44,619				
10	85,150	43,582	41,568	23	90,999	46,841	44,158				
11	86,231	44,233	41,998	24	90,558	46,000	44,558				

Median Age

Total	Male	Female
36.3	35.4	37.3

Notes:

- 1) Unrounded data should not be considered accurate to the last digit.
- 2) Single year of age data are provided to develop a variety of age groupings. Individual age numbers should not be considered reliable.
- 3) Totals may not add due to rounding.

Population by Age and Sex
Population Intercensal Estimate for April 1, 2006
State of Washington

Five Year Age Groups

Age	Total	Male	Female
Total	6,420,258	3,202,927	3,217,331
0-4	413,849	211,759	202,090
5-9	423,839	217,079	206,760
10-14	442,073	226,906	215,167
15-19	458,817	235,256	223,561
20-24	467,564	240,148	227,416
25-29	440,977	225,251	215,726
30-34	422,055	215,767	206,288
35-39	463,937	237,104	226,833
40-44	484,749	244,669	240,080
45-49	501,319	250,814	250,505
50-54	466,990	230,980	236,010
55-59	411,015	202,549	208,466
60-64	291,833	143,631	148,202
65-69	211,420	102,917	108,503
70-74	164,907	77,407	87,500
75-79	140,040	61,771	78,269
80-84	111,229	44,572	66,657
85+	103,645	34,347	69,298

Percent of Total Population

Age	Total	Male	Female
Total	100.0000	49.8878	50.1122
0-4	6.4460	3.2983	3.1477
5-9	6.6016	3.3812	3.2204
10-14	6.8856	3.5342	3.3514
15-19	7.1464	3.6643	3.4821
20-24	7.2826	3.7405	3.5422
25-29	6.8685	3.5084	3.3601
30-34	6.5738	3.3607	3.2131
35-39	7.2261	3.6931	3.5331
40-44	7.5503	3.8109	3.7394
45-49	7.8084	3.9066	3.9018
50-54	7.2737	3.5977	3.6760
55-59	6.4018	3.1548	3.2470
60-64	4.5455	2.2372	2.3083
65-69	3.2930	1.6030	1.6900
70-74	2.5685	1.2057	1.3629
75-79	2.1812	0.9621	1.2191
80-84	1.7325	0.6942	1.0382
85+	1.6143	0.5350	1.0794

Components of Change

	Total	Male	Female
Births	83,170	42,583	40,587
Deaths	45,282	23,155	22,127
Natural Increase	37,888	19,428	18,460
Net Migration	83,554	42,234	41,320
Total Change	121,442	61,662	59,780

Components as % of Previous Year's Total Population

	Total	Male	Female
Births	1.3204	0.6760	0.6444
Deaths	0.7189	0.3676	0.3513
Natural Increase	0.6015	0.3084	0.2931
Net Migration	1.3265	0.6705	0.6560
Total Change	1.9280	0.9789	0.9491

Single Year of Age

Age	Total	Male	Female	Age	Total	Male	Female	Age	Total	Male	Female
0-24	2,206,142	1,131,148	1,074,994	12	87,346	44,819	42,527	60-65	338,607	166,595	172,012
0	82,745	42,345	40,400	13	90,693	46,734	43,959	60	60,678	29,785	30,893
1	82,524	42,227	40,297	14	92,316	47,348	44,968	61	61,378	30,124	31,254
2	83,099	42,519	40,580	15	93,321	47,861	45,460	62	60,407	29,697	30,710
3	82,241	42,079	40,162	16	93,628	48,241	45,387	63	58,589	28,973	29,616
4	83,240	42,589	40,651	17	90,680	46,540	44,140	64	50,781	25,052	25,729
5	85,650	43,822	41,828	18	90,749	46,428	44,321	65	46,774	22,964	23,810
6	83,735	42,972	40,763	19	90,439	46,186	44,253				
7	85,143	43,570	41,573	20	93,095	47,567	45,528				
8	84,755	43,455	41,300	21	93,120	47,798	45,322				
9	84,556	43,260	41,296	22	93,160	47,992	45,168				
10	85,415	43,803	41,612	23	94,661	48,731	45,930				
11	86,303	44,202	42,101	24	93,528	48,060	45,468				

Median Age

Total	Male	Female
36.5	35.6	37.4

Notes:

- 1) Unrounded data should not be considered accurate to the last digit.
- 2) Single year of age data are provided to develop a variety of age groupings. Individual age numbers should not be considered reliable.
- 3) Totals may not add due to rounding.

Population by Age and Sex
Population Intercensal Estimate for April 1, 2007
State of Washington

Five Year Age Groups

Age	Total	Male	Female
Total	6,525,086	3,256,147	3,268,939
0-4	422,873	216,381	206,492
5-9	428,131	219,277	208,854
10-14	438,624	225,056	213,568
15-19	465,752	238,968	226,784
20-24	473,504	242,656	230,848
25-29	459,185	234,503	224,682
30-34	422,296	215,877	206,419
35-39	469,421	240,463	228,958
40-44	474,371	239,701	234,670
45-49	504,171	252,421	251,750
50-54	478,370	236,696	241,674
55-59	417,630	205,587	212,043
60-64	319,708	157,008	162,700
65-69	222,785	108,708	114,077
70-74	168,840	79,601	89,239
75-79	140,386	62,543	77,843
80-84	110,533	44,349	66,184
85+	108,506	36,352	72,154

Percent of Total Population

Age	Total	Male	Female
Total	100.0000	49.9020	50.0980
0-4	6.4807	3.3161	3.1646
5-9	6.5613	3.3605	3.2008
10-14	6.7221	3.4491	3.2730
15-19	7.1379	3.6623	3.4756
20-24	7.2567	3.7188	3.5379
25-29	7.0372	3.5939	3.4434
30-34	6.4719	3.3084	3.1635
35-39	7.1941	3.6852	3.5089
40-44	7.2700	3.6735	3.5964
45-49	7.7267	3.8685	3.8582
50-54	7.3312	3.6275	3.7038
55-59	6.4004	3.1507	3.2497
60-64	4.8997	2.4062	2.4935
65-69	3.4143	1.6660	1.7483
70-74	2.5876	1.2199	1.3676
75-79	2.1515	0.9585	1.1930
80-84	1.6940	0.6797	1.0143
85+	1.6629	0.5571	1.1058

Components of Change

	Total	Male	Female
Births	87,752	44,929	42,823
Deaths	46,161	23,661	22,500
Natural Increase	41,591	21,268	20,323
Net Migration	63,237	31,952	31,285
Total Change	104,828	53,220	51,608

Components as % of Previous Year's Total Population

	Total	Male	Female
Births	1.3668	0.6998	0.6670
Deaths	0.7190	0.3685	0.3505
Natural Increase	0.6478	0.3313	0.3165
Net Migration	0.9850	0.4977	0.4873
Total Change	1.6328	0.8289	0.8038

Single Year of Age

Age	Total	Male	Female	Age	Total	Male	Female	Age	Total	Male	Female
0-24	2,228,884	1,142,338	1,086,546	12	87,129	44,635	42,494	60-65	370,182	181,834	188,348
0	87,307	44,680	42,627	13	88,133	45,221	42,912	60	79,757	39,285	40,472
1	83,565	42,761	40,804	14	91,495	47,144	44,351	61	60,456	29,607	30,849
2	83,942	42,951	40,991	15	93,112	47,750	45,362	62	61,116	29,918	31,198
3	84,493	43,232	41,261	16	94,182	48,295	45,887	63	60,112	29,469	30,643
4	83,566	42,757	40,809	17	94,531	48,679	45,852	64	58,267	28,729	29,538
5	84,463	43,214	41,249	18	91,698	47,050	44,648	65	50,474	24,826	25,648
6	86,806	44,413	42,393	19	92,229	47,194	45,035				
7	84,823	43,530	41,293	20	91,988	46,990	44,998				
8	86,228	44,124	42,104	21	94,939	48,464	46,475				
9	85,811	43,996	41,815	22	94,963	48,670	46,293				
10	85,595	43,791	41,804	23	95,022	48,875	46,147				
11	86,272	44,265	42,007	24	96,592	49,657	46,935				

Median Age

Total	Male	Female
36.6	35.8	37.5

Notes:

- 1) Unrounded data should not be considered accurate to the last digit.
- 2) Single year of age data are provided to develop a variety of age groupings. Individual age numbers should not be considered reliable.
- 3) Totals may not add due to rounding.

Population by Age and Sex
Population Intercensal Estimate for April 1, 2008
State of Washington

Five Year Age Groups

Age	Total	Male	Female
Total	6,608,245	3,298,340	3,309,905
0-4	431,642	220,870	210,772
5-9	429,519	219,894	209,625
10-14	435,704	223,341	212,363
15-19	468,235	240,524	227,711
20-24	474,895	242,940	231,955
25-29	474,982	242,982	232,000
30-34	428,101	218,739	209,362
35-39	465,924	238,571	227,353
40-44	465,598	235,772	229,826
45-49	502,896	251,837	251,059
50-54	486,535	241,286	245,249
55-59	427,543	210,250	217,293
60-64	340,527	166,678	173,849
65-69	238,595	116,520	122,075
70-74	174,764	82,748	92,016
75-79	140,477	63,011	77,466
80-84	110,571	44,822	65,749
85+	111,737	37,555	74,182

Percent of Total Population

Age	Total	Male	Female
Total	100.0000	49.9125	50.0875
0-4	6.5319	3.3423	3.1895
5-9	6.4997	3.3276	3.1722
10-14	6.5933	3.3797	3.2136
15-19	7.0856	3.6398	3.4459
20-24	7.1864	3.6763	3.5101
25-29	7.1877	3.6770	3.5108
30-34	6.4783	3.3101	3.1682
35-39	7.0506	3.6102	3.4404
40-44	7.0457	3.5678	3.4779
45-49	7.6101	3.8110	3.7992
50-54	7.3625	3.6513	3.7113
55-59	6.4698	3.1816	3.2882
60-64	5.1531	2.5223	2.6308
65-69	3.6106	1.7633	1.8473
70-74	2.6446	1.2522	1.3924
75-79	2.1258	0.9535	1.1723
80-84	1.6732	0.6783	0.9950
85+	1.6909	0.5683	1.1226

Components of Change

	Total	Male	Female
Births	89,568	45,858	43,710
Deaths	47,947	24,647	23,300
Natural Increase	41,621	21,211	20,410
Net Migration	41,538	20,982	20,556
Total Change	83,159	42,193	40,966

Components as % of Previous Year's Total Population

	Total	Male	Female
Births	1.3727	0.7028	0.6699
Deaths	0.7348	0.3777	0.3571
Natural Increase	0.6379	0.3251	0.3128
Net Migration	0.6366	0.3216	0.3150
Total Change	1.2745	0.6466	0.6278

Single Year of Age

Age	Total	Male	Female	Age	Total	Male	Female	Age	Total	Male	Female
0-24	2,239,995	1,147,569	1,092,426	12	86,804	44,544	42,260	60-65	398,317	195,089	203,228
0	89,109	45,601	43,508	13	87,632	44,891	42,741	60	80,756	39,540	41,216
1	87,838	44,948	42,890	14	88,630	45,473	43,157	61	79,323	38,984	40,339
2	84,483	43,229	41,254	15	91,993	47,395	44,598	62	60,086	29,353	30,733
3	84,845	43,413	41,432	16	93,653	48,020	45,633	63	60,701	29,636	31,065
4	85,367	43,679	41,688	17	94,751	48,565	46,186	64	59,661	29,165	30,496
5	84,355	43,160	41,195	18	95,196	49,009	46,187	65	57,790	28,411	29,379
6	85,195	43,588	41,607	19	92,642	47,535	45,107				
7	87,530	44,782	42,748	20	93,225	47,706	45,519				
8	85,519	43,886	41,633	21	93,140	47,544	45,596				
9	86,920	44,478	42,442	22	96,124	49,012	47,112				
10	86,490	44,344	42,146	23	96,161	49,226	46,935				
11	86,148	44,089	42,059	24	96,245	49,452	46,793				

Median Age

Total	Male	Female
36.8	35.9	37.7

Notes:

- 1) Unrounded data should not be considered accurate to the last digit.
- 2) Single year of age data are provided to develop a variety of age groupings. Individual age numbers should not be considered reliable.
- 3) Totals may not add due to rounding.

Population by Age and Sex
Population Intercensal Estimate for April 1, 2009
State of Washington

Five Year Age Groups

Age	Total	Male	Female
Total	6,672,159	3,330,751	3,341,408
0-4	437,336	223,787	213,549
5-9	429,869	220,065	209,804
10-14	435,435	223,090	212,345
15-19	465,820	239,235	226,585
20-24	474,164	242,341	231,823
25-29	484,743	247,894	236,849
30-34	436,351	223,183	213,168
35-39	456,856	233,531	223,325
40-44	460,081	233,782	226,299
45-49	502,867	252,369	250,498
50-54	490,397	243,535	246,862
55-59	438,842	215,223	223,619
60-64	357,715	175,043	182,672
65-69	254,398	124,007	130,391
70-74	181,408	86,268	95,140
75-79	140,487	63,350	77,137
80-84	110,169	45,107	65,062
85+	115,221	38,941	76,280

Percent of Total Population

Age	Total	Male	Female
Total	100.0000	49.9201	50.0799
0-4	6.5546	3.3540	3.2006
5-9	6.4427	3.2983	3.1445
10-14	6.5261	3.3436	3.1826
15-19	6.9815	3.5856	3.3960
20-24	7.1066	3.6321	3.4745
25-29	7.2652	3.7153	3.5498
30-34	6.5399	3.3450	3.1949
35-39	6.8472	3.5001	3.3471
40-44	6.8955	3.5038	3.3917
45-49	7.5368	3.7824	3.7544
50-54	7.3499	3.6500	3.6999
55-59	6.5772	3.2257	3.3515
60-64	5.3613	2.6235	2.7378
65-69	3.8128	1.8586	1.9543
70-74	2.7189	1.2930	1.4259
75-79	2.1056	0.9495	1.1561
80-84	1.6512	0.6760	0.9751
85+	1.7269	0.5836	1.1433

Components of Change

	Total	Male	Female
Births	89,838	45,997	43,841
Deaths	48,116	24,797	23,319
Natural Increase	41,722	21,200	20,522
Net Migration	22,192	11,211	10,981
Total Change	63,914	32,411	31,503

Components as % of Previous Year's Total Population

	Total	Male	Female
Births	1.3595	0.6961	0.6634
Deaths	0.7281	0.3752	0.3529
Natural Increase	0.6314	0.3208	0.3106
Net Migration	0.3358	0.1697	0.1662
Total Change	0.9672	0.4905	0.4767

Single Year of Age

Age	Total	Male	Female	Age	Total	Male	Female	Age	Total	Male	Female
0-24	2,242,624	1,148,518	1,094,106	12	86,426	44,234	42,192	60-65	416,800	203,847	212,953
0	89,387	45,745	43,642	13	87,063	44,675	42,388	60	79,018	38,909	40,109
1	89,359	45,725	43,634	14	87,884	45,017	42,867	61	80,214	39,193	41,021
2	88,335	45,201	43,134	15	88,871	45,591	43,280	62	78,730	38,605	40,125
3	84,954	43,470	41,484	16	92,257	47,524	44,733	63	59,593	29,041	30,552
4	85,301	43,646	41,655	17	93,931	48,147	45,784	64	60,160	29,295	30,865
5	85,786	43,892	41,894	18	95,077	48,719	46,358	65	59,085	28,804	30,281
6	84,735	43,354	41,381	19	95,684	49,254	46,430				
7	85,566	43,777	41,789	20	93,139	47,784	45,355				
8	87,904	44,972	42,932	21	93,807	47,977	45,830				
9	85,878	44,070	41,808	22	93,718	47,800	45,918				
10	87,280	44,662	42,618	23	96,724	49,277	47,447				
11	86,782	44,502	42,280	24	96,776	49,503	47,273				

Median Age

Total	Male	Female
37.0	36.1	38.0

Notes:

- 1) Unrounded data should not be considered accurate to the last digit.
- 2) Single year of age data are provided to develop a variety of age groupings. Individual age numbers should not be considered reliable.
- 3) Totals may not add due to rounding.

Population by Age and Sex
Population Census for April 1, 2010
State of Washington

Five Year Age Groups

Age	Total	Male	Female
Total	6,724,540	3,349,707	3,374,833
0-4	439,657	225,088	214,569
5-9	429,877	219,702	210,175
10-14	438,233	224,717	213,516
15-19	462,128	237,577	224,551
20-24	461,512	238,131	223,381
25-29	480,398	245,014	235,384
30-34	453,383	229,863	223,520
35-39	448,607	226,850	221,757
40-44	459,698	232,587	227,111
45-49	492,909	246,507	246,402
50-54	495,296	245,997	249,299
55-59	453,078	221,321	231,757
60-64	382,087	186,378	195,709
65-69	270,474	131,064	139,410
70-74	186,746	88,760	97,986
75-79	142,068	64,325	77,743
80-84	111,118	45,743	65,375
85+	117,271	40,083	77,188

Percent of Total Population

Age	Total	Male	Female
Total	100.0000	49.8132	50.1868
0-4	6.5381	3.3473	3.1908
5-9	6.3927	3.2672	3.1255
10-14	6.5169	3.3417	3.1752
15-19	6.8723	3.5330	3.3393
20-24	6.8631	3.5412	3.3219
25-29	7.1440	3.6436	3.5004
30-34	6.7422	3.4183	3.3239
35-39	6.6712	3.3735	3.2977
40-44	6.8361	3.4588	3.3773
45-49	7.3300	3.6658	3.6642
50-54	7.3655	3.6582	3.7073
55-59	6.7377	3.2912	3.4464
60-64	5.6820	2.7716	2.9104
65-69	4.0222	1.9490	2.0732
70-74	2.7771	1.3199	1.4571
75-79	2.1127	0.9566	1.1561
80-84	1.6524	0.6802	0.9722
85+	1.7439	0.5961	1.1479

Components of Change

	Total	Male	Female
Births	88,408	45,264	43,144
Deaths	47,672	24,636	23,036
Natural Increase	40,736	20,628	20,108
Migrants	11,645	5,882	5,763
Total Change	52,381	26,510	25,871

Components as % of Previous Year's Total Population

	Total	Male	Female
Births	1.3250	0.6784	0.6466
Deaths	0.7145	0.3692	0.3453
Natural Increase	0.6105	0.3092	0.3014
Net Migration	0.1745	0.0882	0.0864
Total Change	0.7851	0.3973	0.3877

Single Year of Age

Age	Total	Male	Female	Age	Total	Male	Female	Age	Total	Male	Female
0-24	2,231,407	1,145,215	1,086,192	12	87,497	44,829	42,668	60-65	442,446	215,605	226,841
0	87,016	44,493	42,523	13	87,399	44,721	42,678	60	82,770	40,433	42,337
1	87,607	44,594	43,013	14	87,582	44,878	42,704	61	79,684	39,161	40,523
2	89,399	45,846	43,553	15	89,006	45,607	43,399	62	81,056	39,293	41,763
3	89,097	45,742	43,355	16	90,813	46,516	44,297	63	79,021	38,574	40,447
4	86,538	44,413	42,125	17	93,768	48,572	45,196	64	59,556	28,917	30,639
5	86,550	44,379	42,171	18	94,467	48,726	45,741	65	60,359	29,227	31,132
6	85,890	43,896	41,994	19	94,074	48,156	45,918				
7	84,916	43,086	41,830	20	94,086	48,909	45,177				
8	85,058	43,492	41,566	21	91,883	47,583	44,300				
9	87,463	44,849	42,614	22	90,739	46,693	44,046				
10	88,129	45,209	42,920	23	90,837	46,822	44,015				
11	87,626	45,080	42,546	24	93,967	48,124	45,843				

Median Age

Total	Male	Female
37.3	36.2	38.3

Notes:

- 1) Unrounded data should not be considered accurate to the last digit.
- 2) Single year of age data are provided to develop a variety of age groupings. Individual age numbers should not be considered reliable.
- 3) Totals may not add due to rounding.

Population by Age and Sex
Population Estimate for April 1, 2011
State of Washington

Five Year Age Groups

Age	Total	Male	Female
Total	6,767,900	3,372,248	3,395,652
0-4	438,885	224,542	214,343
5-9	429,397	219,489	209,908
10-14	438,463	224,870	213,593
15-19	455,937	234,424	221,513
20-24	462,100	238,320	223,780
25-29	478,335	244,415	233,920
30-34	463,031	234,722	228,309
35-39	437,337	220,891	216,446
40-44	467,743	236,891	230,852
45-49	480,231	240,746	239,485
50-54	497,288	247,123	250,165
55-59	463,953	226,915	237,038
60-64	402,786	196,040	206,746
65-69	281,726	136,277	145,449
70-74	194,834	92,871	101,963
75-79	143,589	65,324	78,265
80-84	112,330	47,007	65,323
85+	119,935	41,381	78,554

Percent of Total Population

Age	Total	Male	Female
Total	100.0000	49.8271	50.1729
0-4	6.4848	3.3177	3.1671
5-9	6.3446	3.2431	3.1015
10-14	6.4786	3.3226	3.1560
15-19	6.7368	3.4638	3.2730
20-24	6.8278	3.5213	3.3065
25-29	7.0677	3.6114	3.4563
30-34	6.8416	3.4682	3.3734
35-39	6.4619	3.2638	3.1981
40-44	6.9112	3.5002	3.4110
45-49	7.0957	3.5572	3.5385
50-54	7.3477	3.6514	3.6963
55-59	6.8552	3.3528	3.5024
60-64	5.9514	2.8966	3.0548
65-69	4.1627	2.0136	2.1491
70-74	2.8788	1.3722	1.5066
75-79	2.1216	0.9652	1.1564
80-84	1.6597	0.6946	0.9652
85+	1.7721	0.6114	1.1607

Components of Change

	Total	Male	Female
Births	86,383	44,228	42,155
Deaths	48,786	24,596	24,190
Natural Increase	37,597	19,632	17,965
Net Migration	5,763	2,909	2,854
Total Change	43,360	22,541	20,819

Components as % of Previous Year's Total Population

	Total	Male	Female
Births	1.2846	0.6577	0.6269
Deaths	0.7255	0.3658	0.3597
Natural Increase	0.5591	0.2919	0.2672
Net Migration	0.0857	0.0433	0.0424
Total Change	0.6448	0.3352	0.3096

Single Year of Age

Age	Total	Male	Female	Age	Total	Male	Female	Age	Total	Male	Female
0-24	2,224,782	1,141,645	1,083,137	12	87,695	45,117	42,578	60-65	461,727	224,589	237,138
0	85,867	43,939	41,928	13	87,560	44,861	42,699	60	83,028	40,270	42,758
1	86,652	44,291	42,361	14	87,457	44,750	42,707	61	82,131	40,039	42,092
2	87,658	44,616	43,042	15	87,634	44,902	42,732	62	79,025	38,755	40,270
3	89,503	45,899	43,604	16	89,055	45,628	43,427	63	80,337	38,859	41,478
4	89,205	45,797	43,408	17	90,862	46,534	44,328	64	78,265	38,117	40,148
5	86,635	44,461	42,174	18	93,825	48,594	45,231	65	58,941	28,549	30,392
6	86,642	44,426	42,216	19	94,561	48,766	45,795				
7	85,977	43,940	42,037	20	94,167	48,195	45,972				
8	85,002	43,128	41,874	21	94,194	48,949	45,245				
9	85,141	43,534	41,607	22	91,981	47,612	44,369				
10	87,550	44,893	42,657	23	90,829	46,717	44,112				
11	88,201	45,249	42,952	24	90,929	46,847	44,082				

Median Age

Total	Male	Female
37.5	36.5	38.6

Notes:

- 1) Unrounded data should not be considered accurate to the last digit.
- 2) Single year of age data are provided to develop a variety of age groupings. Individual age numbers should not be considered reliable.
- 3) Totals may not add due to rounding.

Population by Age and Sex
Population Estimate for April 1, 2012
State of Washington

Five Year Age Groups

Age	Total	Male	Female
Total	6,817,770	3,397,971	3,419,799
0-4	436,713	223,260	213,453
5-9	434,460	222,259	212,201
10-14	436,907	224,050	212,857
15-19	449,623	230,784	218,839
20-24	467,107	240,844	226,263
25-29	473,373	242,334	231,039
30-34	472,608	239,853	232,755
35-39	435,120	219,660	215,460
40-44	470,210	238,294	231,916
45-49	468,798	235,173	233,625
50-54	496,614	247,001	249,613
55-59	472,980	231,698	241,282
60-64	407,628	198,065	209,563
65-69	307,889	148,717	159,172
70-74	205,466	98,320	107,146
75-79	146,942	67,236	79,706
80-84	112,844	47,882	64,962
85+	122,488	42,541	79,947

Percent of Total Population

Age	Total	Male	Female
Total	100.0000	49.8399	50.1601
0-4	6.4055	3.2747	3.1308
5-9	6.3725	3.2600	3.1125
10-14	6.4084	3.2863	3.1221
15-19	6.5949	3.3850	3.2098
20-24	6.8513	3.5326	3.3187
25-29	6.9432	3.5544	3.3888
30-34	6.9320	3.5181	3.4139
35-39	6.3821	3.2219	3.1603
40-44	6.8968	3.4952	3.4016
45-49	6.8761	3.4494	3.4267
50-54	7.2841	3.6229	3.6612
55-59	6.9375	3.3984	3.5390
60-64	5.9789	2.9051	3.0738
65-69	4.5160	2.1813	2.3347
70-74	3.0137	1.4421	1.5716
75-79	2.1553	0.9862	1.1691
80-84	1.6551	0.7023	0.9528
85+	1.7966	0.6240	1.1726

Components of Change

	Total	Male	Female
Births	87,134	44,612	42,522
Deaths	49,231	24,929	24,302
Natural Increase	37,903	19,683	18,220
Net Migration	11,967	6,040	5,927
Total Change	49,870	25,723	24,147

Components as % of Previous Year's Total Population

	Total	Male	Female
Births	1.2875	0.6592	0.6283
Deaths	0.7274	0.3683	0.3591
Natural Increase	0.5600	0.2908	0.2692
Net Migration	0.1768	0.0892	0.0876
Total Change	0.7369	0.3801	0.3568

Single Year of Age

Age	Total	Male	Female	Age	Total	Male	Female	Age	Total	Male	Female
0-24	2,224,810	1,141,197	1,083,613	12	88,351	45,328	43,023	60-65	485,135	235,722	249,413
0	86,621	44,325	42,296	13	87,833	45,188	42,645	60	85,704	41,748	43,956
1	85,600	43,787	41,813	14	87,694	44,929	42,765	61	82,434	39,899	42,535
2	86,845	44,386	42,459	15	87,582	44,811	42,771	62	81,498	39,645	41,853
3	87,899	44,738	43,161	16	87,763	44,964	42,799	63	78,371	38,350	40,021
4	89,748	46,024	43,724	17	89,189	45,688	43,501	64	79,621	38,423	41,198
5	89,432	45,912	43,520	18	91,021	46,607	44,414	65	77,507	37,657	39,850
6	86,838	44,565	42,273	19	94,068	48,714	45,354				
7	86,836	44,525	42,311	20	94,813	48,890	45,923				
8	86,168	44,036	42,132	21	94,459	48,326	46,133				
9	85,186	43,221	41,965	22	94,478	49,070	45,408				
10	85,324	43,627	41,697	23	92,254	47,726	44,528				
11	87,705	44,978	42,727	24	91,103	46,832	44,271				

Median Age

Total	Male	Female
37.7	36.7	38.8

Notes:

- 1) Unrounded data should not be considered accurate to the last digit.
- 2) Single year of age data are provided to develop a variety of age groupings. Individual age numbers should not be considered reliable.
- 3) Totals may not add due to rounding.

Population by Age and Sex
Population Estimate for April 1, 2013
State of Washington

Five Year Age Groups

Age	Total	Male	Female
Total	6,882,400	3,431,037	3,451,363
0-4	435,418	222,475	212,943
5-9	441,499	226,328	215,171
10-14	436,242	223,298	212,944
15-19	445,303	228,023	217,280
20-24	473,826	244,517	229,309
25-29	471,008	241,345	229,663
30-34	482,031	245,224	236,807
35-39	440,236	222,267	217,969
40-44	467,225	236,496	230,729
45-49	459,213	230,723	228,490
50-54	495,559	246,569	248,990
55-59	479,090	235,115	243,975
60-64	416,254	202,265	213,989
65-69	328,533	158,274	170,259
70-74	220,790	105,700	115,090
75-79	152,352	70,069	82,283
80-84	113,299	48,587	64,712
85+	124,522	43,762	80,760

Percent of Total Population

Age	Total	Male	Female
Total	100.0000	49.8523	50.1477
0-4	6.3265	3.2325	3.0940
5-9	6.4149	3.2885	3.1264
10-14	6.3385	3.2445	3.0940
15-19	6.4702	3.3131	3.1570
20-24	6.8846	3.5528	3.3318
25-29	6.8437	3.5067	3.3370
30-34	7.0038	3.5631	3.4408
35-39	6.3965	3.2295	3.1670
40-44	6.7887	3.4362	3.3524
45-49	6.6723	3.3524	3.3199
50-54	7.2004	3.5826	3.6178
55-59	6.9611	3.4162	3.5449
60-64	6.0481	2.9389	3.1092
65-69	4.7735	2.2997	2.4738
70-74	3.2080	1.5358	1.6722
75-79	2.2136	1.0181	1.1956
80-84	1.6462	0.7060	0.9403
85+	1.8093	0.6359	1.1734

Components of Change

	Total	Male	Female
Births	87,250	44,672	42,578
Deaths	51,109	25,987	25,122
Natural Increase	36,141	18,685	17,456
Net Migration	28,489	14,381	14,108
Total Change	64,630	33,066	31,564

Components as % of Previous Year's Total Population

	Total	Male	Female
Births	1.2797	0.6552	0.6245
Deaths	0.7496	0.3812	0.3685
Natural Increase	0.5301	0.2741	0.2560
Net Migration	0.4179	0.2109	0.2069
Total Change	0.9480	0.4850	0.4630

Single Year of Age

Age	Total	Male	Female	Age	Total	Male	Female	Age	Total	Male	Female
0-24	2,232,288	1,144,641	1,087,647	12	88,064	45,167	42,897	60-65	495,206	240,268	254,938
0	86,728	44,380	42,348	13	88,691	45,502	43,189	60	90,491	44,084	46,407
1	86,579	44,288	42,291	14	88,165	45,358	42,807	61	85,184	41,405	43,779
2	86,164	44,071	42,093	15	88,016	45,091	42,925	62	81,893	39,546	42,347
3	87,451	44,695	42,756	16	87,922	44,981	42,941	63	80,920	39,270	41,650
4	88,496	45,041	43,455	17	88,118	45,133	42,985	64	77,766	37,960	39,806
5	90,305	46,308	43,997	18	89,605	45,893	43,712	65	78,952	38,003	40,949
6	89,945	46,175	43,770	19	91,642	46,925	44,717				
7	87,318	44,811	42,507	20	94,736	49,061	45,675				
8	87,307	44,765	42,542	21	95,592	49,266	46,326				
9	86,624	44,269	42,355	22	95,229	48,679	46,550				
10	85,632	43,447	42,185	23	95,249	49,428	45,821				
11	85,690	43,824	41,866	24	93,020	48,083	44,937				

Median Age

Total	Male	Female
37.9	36.9	38.9

Notes:

- 1) Unrounded data should not be considered accurate to the last digit.
- 2) Single year of age data are provided to develop a variety of age groupings. Individual age numbers should not be considered reliable.
- 3) Totals may not add due to rounding.

Population by Age and Sex
Population Estimate for April 1, 2014
State of Washington

Five Year Age Groups

Age	Total	Male	Female
Total	6,968,170	3,474,653	3,493,517
0-4	436,847	223,429	213,418
5-9	447,727	229,327	218,400
10-14	437,910	223,873	214,037
15-19	445,462	228,295	217,167
20-24	479,231	246,661	232,570
25-29	475,139	243,774	231,365
30-34	491,442	250,321	241,121
35-39	449,007	227,002	222,005
40-44	460,377	232,695	227,682
45-49	455,655	229,577	226,078
50-54	494,829	246,333	248,496
55-59	483,415	237,963	245,452
60-64	428,294	207,292	221,002
65-69	346,563	167,150	179,413
70-74	236,603	113,119	123,484
75-79	158,889	73,395	85,494
80-84	113,817	49,309	64,508
85+	126,963	45,138	81,825

Percent of Total Population

Age	Total	Male	Female
Total	100.0000	49.8646	50.1354
0-4	6.2692	3.2064	3.0628
5-9	6.4253	3.2911	3.1343
10-14	6.2844	3.2128	3.0716
15-19	6.3928	3.2763	3.1166
20-24	6.8774	3.5398	3.3376
25-29	6.8187	3.4984	3.3203
30-34	7.0527	3.5923	3.4603
35-39	6.4437	3.2577	3.1860
40-44	6.6069	3.3394	3.2675
45-49	6.5391	3.2947	3.2444
50-54	7.1013	3.5351	3.5662
55-59	6.9375	3.4150	3.5225
60-64	6.1464	2.9748	3.1716
65-69	4.9735	2.3988	2.5748
70-74	3.3955	1.6234	1.7721
75-79	2.2802	1.0533	1.2269
80-84	1.6334	0.7076	0.9258
85+	1.8220	0.6478	1.1743

Components of Change

	Total	Male	Female
Births	87,026	44,557	42,469
Deaths	50,711	25,902	24,809
Natural Increase	36,315	18,655	17,660
Net Migration	49,455	24,961	24,494
Total Change	85,770	43,616	42,154

Components as % of Previous Year's Total Population

	Total	Male	Female
Births	1.2645	0.6474	0.6171
Deaths	0.7368	0.3764	0.3605
Natural Increase	0.5277	0.2711	0.2566
Net Migration	0.7186	0.3627	0.3559
Total Change	1.2462	0.6337	0.6125

Single Year of Age

Age	Total	Male	Female	Age	Total	Male	Female	Age	Total	Male	Female
0-24	2,247,177	1,151,585	1,095,592	12	86,298	44,143	42,155	60-65	505,569	244,915	260,654
0	86,522	44,275	42,247	13	88,656	45,470	43,186	60	91,488	44,198	47,290
1	86,989	44,498	42,491	14	89,277	45,802	43,475	61	90,099	43,795	46,304
2	87,624	44,819	42,805	15	88,734	45,648	43,086	62	84,780	41,111	43,669
3	87,223	44,612	42,611	16	88,624	45,399	43,225	63	81,470	39,243	42,227
4	88,489	45,225	43,264	17	88,556	45,287	43,269	64	80,457	38,945	41,512
5	89,456	45,528	43,928	18	88,856	45,503	43,353	65	77,275	37,623	39,652
6	91,207	46,771	44,436	19	90,692	46,458	44,234				
7	90,809	46,618	44,191	20	92,808	47,533	45,275				
8	88,143	45,233	42,910	21	96,126	49,748	46,378				
9	88,112	45,177	42,935	22	96,990	49,929	47,061				
10	87,411	44,671	42,740	23	96,632	49,337	47,295				
11	86,268	43,787	42,481	24	96,675	50,114	46,561				

Median Age

Total	Male	Female
38.0	37.0	39.0

Notes:

- 1) Unrounded data should not be considered accurate to the last digit.
- 2) Single year of age data are provided to develop a variety of age groupings. Individual age numbers should not be considered reliable.
- 3) Totals may not add due to rounding.

Population by Age and Sex
Population Estimate for April 1, 2015
State of Washington

Five Year Age Groups

Age	Total	Male	Female
Total	7,061,410	3,521,913	3,539,497
0-4	440,331	225,246	215,085
5-9	453,189	231,973	221,216
10-14	440,472	225,181	215,291
15-19	448,274	229,781	218,493
20-24	481,134	246,839	234,295
25-29	481,724	247,751	233,973
30-34	495,912	252,533	243,379
35-39	461,448	233,682	227,766
40-44	452,221	228,357	223,864
45-49	460,339	232,433	227,906
50-54	489,798	244,025	245,773
55-59	487,629	240,647	246,982
60-64	441,275	213,358	227,917
65-69	366,442	176,608	189,834
70-74	251,299	119,911	131,388
75-79	165,125	76,698	88,427
80-84	115,482	50,397	65,085
85+	129,316	46,493	82,823

Percent of Total Population

Age	Total	Male	Female
Total	100.0000	49.8755	50.1245
0-4	6.2357	3.1898	3.0459
5-9	6.4178	3.2851	3.1327
10-14	6.2377	3.1889	3.0488
15-19	6.3482	3.2540	3.0942
20-24	6.8136	3.4956	3.3180
25-29	6.8219	3.5085	3.3134
30-34	7.0228	3.5762	3.4466
35-39	6.5348	3.3093	3.2255
40-44	6.4041	3.2339	3.1702
45-49	6.5191	3.2916	3.2275
50-54	6.9363	3.4558	3.4805
55-59	6.9055	3.4079	3.4976
60-64	6.2491	3.0215	3.2276
65-69	5.1894	2.5010	2.6883
70-74	3.5588	1.6981	1.8606
75-79	2.3384	1.0862	1.2523
80-84	1.6354	0.7137	0.9217
85+	1.8313	0.6584	1.1729

Components of Change

	Total	Male	Female
Births	88,470	45,296	43,174
Deaths	52,825	27,105	25,720
Natural Increase	35,645	18,191	17,454
Net Migration	57,595	29,069	28,526
Total Change	93,240	47,260	45,980

Components as % of Previous Year's Total Population

	Total	Male	Female
Births	1.2696	0.6500	0.6196
Deaths	0.7581	0.3890	0.3691
Natural Increase	0.5115	0.2611	0.2505
Net Migration	0.8265	0.4172	0.4094
Total Change	1.3381	0.6782	0.6599

Single Year of Age

Age	Total	Male	Female	Age	Total	Male	Female	Age	Total	Male	Female
0-24	2,263,400	1,159,020	1,104,380	12	86,975	44,155	42,820	60-65	521,265	251,973	269,292
0	87,950	45,005	42,945	13	86,967	44,485	42,482	60	95,006	46,189	48,817
1	86,882	44,443	42,439	14	89,333	45,816	43,517	61	91,132	43,925	47,207
2	88,210	45,119	43,091	15	89,944	46,142	43,802	62	89,712	43,500	46,212
3	88,870	45,456	43,414	16	89,444	46,009	43,435	63	84,380	40,811	43,569
4	88,419	45,223	43,196	17	89,365	45,758	43,607	64	81,045	38,933	42,112
5	89,598	45,790	43,808	18	89,416	45,719	43,697	65	79,990	38,615	41,375
6	90,489	46,053	44,436	19	90,105	46,153	43,952				
7	92,220	47,290	44,930	20	92,030	47,157	44,873				
8	91,801	47,126	44,675	21	94,387	48,306	46,081				
9	89,081	45,714	43,367	22	97,756	50,528	47,228				
10	89,037	45,651	43,386	23	98,647	50,714	47,933				
11	88,160	45,074	43,086	24	98,314	50,134	48,180				

Median Age

Total	Male	Female
38.1	37.1	39.1

Notes:

- 1) Unrounded data should not be considered accurate to the last digit.
- 2) Single year of age data are provided to develop a variety of age groupings. Individual age numbers should not be considered reliable.
- 3) Totals may not add due to rounding.

**Population by Age and Sex
Population Forecast for April 1, 2016
State of Washington**

Five Year Age Groups

Age	Total	Male	Female
Total	7,155,334	3,569,393	3,585,941
0-4	444,430	227,345	217,085
5-9	457,666	234,106	223,560
10-14	443,986	227,034	216,952
15-19	451,766	231,604	220,162
20-24	480,820	246,698	234,122
25-29	490,159	251,814	238,345
30-34	500,423	255,286	245,137
35-39	475,478	240,793	234,685
40-44	443,396	223,662	219,734
45-49	470,471	237,813	232,658
50-54	479,074	239,277	239,797
55-59	491,428	242,658	248,770
60-64	453,602	219,567	234,035
65-69	387,872	186,483	201,389
70-74	262,681	125,155	137,526
75-79	172,835	80,532	92,303
80-84	117,173	51,402	65,771
85+	132,074	48,164	83,910

Percent of Total Population

Age	Total	Male	Female
Total	100.0000	49.8844	50.1156
0-4	6.2112	3.1773	3.0339
5-9	6.3962	3.2718	3.1244
10-14	6.2050	3.1729	3.0320
15-19	6.3137	3.2368	3.0769
20-24	6.7197	3.4477	3.2720
25-29	6.8503	3.5192	3.3310
30-34	6.9937	3.5678	3.4259
35-39	6.6451	3.3652	3.2799
40-44	6.1967	3.1258	3.0709
45-49	6.5751	3.3236	3.2515
50-54	6.6953	3.3440	3.3513
55-59	6.8680	3.3913	3.4767
60-64	6.3394	3.0686	3.2708
65-69	5.4207	2.6062	2.8145
70-74	3.6711	1.7491	1.9220
75-79	2.4155	1.1255	1.2900
80-84	1.6376	0.7184	0.9192
85+	1.8458	0.6731	1.1727

Components of Change

	Total	Male	Female
Births	88,958	45,546	43,412
Deaths	53,334	27,488	25,846
Natural Increase	35,624	18,058	17,566
Net Migration	58,300	29,422	28,878
Total Change	93,924	47,480	46,444

Components as % of Previous Year's Total Population

	Total	Male	Female
Births	1.2598	0.6450	0.6148
Deaths	0.7553	0.3893	0.3660
Natural Increase	0.5045	0.2557	0.2488
Net Migration	0.8256	0.4167	0.4090
Total Change	1.3301	0.6724	0.6577

Single Year of Age

Age	Total	Male	Female	Age	Total	Male	Female	Age	Total	Male	Female
0-24	2,278,668	1,166,787	1,111,881	12	88,884	45,454	43,430	60-65	534,191	258,179	276,012
0	88,443	45,258	43,185	13	87,651	44,498	43,153	60	94,947	46,333	48,614
1	88,325	45,181	43,144	14	87,632	44,824	42,808	61	94,648	45,911	48,737
2	88,105	45,065	43,040	15	90,001	46,156	43,845	62	90,754	43,636	47,118
3	89,466	45,761	43,705	16	90,664	46,507	44,157	63	89,302	43,191	46,111
4	90,091	46,080	44,011	17	90,192	46,373	43,819	64	83,951	40,496	43,455
5	89,529	45,789	43,740	18	90,234	46,195	44,039	65	80,589	38,612	41,977
6	90,634	46,319	44,315	19	90,675	46,373	44,302				
7	91,495	46,564	44,931	20	91,437	46,849	44,588				
8	93,228	47,806	45,422	21	93,598	47,925	45,673				
9	92,780	47,628	45,152	22	95,991	49,064	46,927				
10	90,017	46,194	43,823	23	99,429	51,325	48,104				
11	89,802	46,064	43,738	24	100,365	51,535	48,830				

Median Age

Total	Male	Female
38.2	37.2	39.2

Notes:

- 1) Unrounded data should not be considered accurate to the last digit.
- 2) Single year of age data are provided to develop a variety of age groupings. Individual age numbers should not be considered reliable.
- 3) Totals may not add due to rounding.

**Population by Age and Sex
Population Forecast for April 1, 2017
State of Washington**

Five Year Age Groups

Age	Total	Male	Female
Total	7,247,580	3,615,754	3,631,826
0-4	448,300	229,322	218,978
5-9	459,841	235,040	224,801
10-14	452,752	231,718	221,034
15-19	452,753	232,097	220,656
20-24	478,523	245,122	233,401
25-29	502,013	257,699	244,314
30-34	500,984	256,021	244,963
35-39	489,177	248,049	241,128
40-44	443,378	223,562	219,816
45-49	474,685	240,115	234,570
50-54	469,199	234,516	234,683
55-59	492,293	243,293	249,000
60-64	463,870	224,878	238,992
65-69	394,045	189,083	204,962
70-74	288,282	137,193	151,089
75-79	182,842	85,539	97,303
80-84	120,330	53,092	67,238
85+	134,313	49,415	84,898

Percent of Total Population

Age	Total	Male	Female
Total	100.0000	49.8891	50.1109
0-4	6.1855	3.1641	3.0214
5-9	6.3448	3.2430	3.1017
10-14	6.2469	3.1972	3.0498
15-19	6.2470	3.2024	3.0445
20-24	6.6025	3.3821	3.2204
25-29	6.9266	3.5557	3.3710
30-34	6.9124	3.5325	3.3799
35-39	6.7495	3.4225	3.3270
40-44	6.1176	3.0846	3.0330
45-49	6.5496	3.3130	3.2365
50-54	6.4739	3.2358	3.2381
55-59	6.7925	3.3569	3.4356
60-64	6.4003	3.1028	3.2975
65-69	5.4369	2.6089	2.8280
70-74	3.9776	1.8929	2.0847
75-79	2.5228	1.1802	1.3426
80-84	1.6603	0.7325	0.9277
85+	1.8532	0.6818	1.1714

Components of Change

	Total	Male	Female
Births	90,638	46,406	44,232
Deaths	53,892	28,061	25,831
Natural Increase	36,746	18,345	18,401
Net Migration	55,500	28,016	27,484
Total Change	92,246	46,361	45,885

Components as % of Previous Year's Total Population

	Total	Male	Female
Births	1.2667	0.6486	0.6182
Deaths	0.7532	0.3922	0.3610
Natural Increase	0.5135	0.2564	0.2572
Net Migration	0.7756	0.3915	0.3841
Total Change	1.2892	0.6479	0.6413

Single Year of Age

Age	Total	Male	Female	Age	Total	Male	Female	Age	Total	Male	Female
0-24	2,292,169	1,173,299	1,118,870	12	90,495	46,429	44,066	60-65	547,338	265,034	282,304
0	90,121	46,115	44,006	13	89,534	45,786	43,748	60	95,882	47,051	48,831
1	88,779	45,413	43,366	14	88,281	44,817	43,464	61	94,577	46,049	48,528
2	89,492	45,774	43,718	15	88,249	45,137	43,112	62	94,243	45,604	48,639
3	89,285	45,668	43,617	16	90,679	46,500	44,179	63	90,330	43,321	47,009
4	90,623	46,352	44,271	17	91,379	46,854	44,525	64	88,838	42,853	45,985
5	91,155	46,622	44,533	18	91,017	46,790	44,227	65	83,468	40,156	43,312
6	90,503	46,287	44,216	19	91,429	46,816	44,613				
7	91,582	46,803	44,779	20	91,934	47,029	44,905				
8	92,437	47,042	45,395	21	92,902	47,566	45,336				
9	94,164	48,286	45,878	22	95,094	48,631	46,463				
10	93,698	48,099	45,599	23	97,536	49,790	47,746				
11	90,744	46,587	44,157	24	101,057	52,106	48,951				

Median Age

Total	Male	Female
38.3	37.4	39.3

Notes:

- 1) Unrounded data should not be considered accurate to the last digit.
- 2) Single year of age data are provided to develop a variety of age groupings. Individual age numbers should not be considered reliable.
- 3) Totals may not add due to rounding.

**Population by Age and Sex
Population Forecast for April 1, 2018
State of Washington**

Five Year Age Groups

Age	Total	Male	Female
Total	7,334,530	3,659,360	3,675,170
0-4	452,058	231,242	220,816
5-9	460,664	235,332	225,332
10-14	461,942	236,908	225,034
15-19	453,211	231,919	221,292
20-24	475,451	242,997	232,454
25-29	512,398	263,185	249,213
30-34	501,497	256,490	245,007
35-39	501,076	254,711	246,365
40-44	449,809	226,843	222,966
45-49	472,530	238,742	233,788
50-54	460,413	230,501	229,912
55-59	492,082	243,290	248,792
60-64	470,669	228,606	242,063
65-69	403,307	193,510	209,797
70-74	308,547	146,484	162,063
75-79	197,117	92,281	104,836
80-84	125,215	55,554	69,661
85+	136,544	50,765	85,779

Percent of Total Population

Age	Total	Male	Female
Total	100.0000	49.8922	50.1078
0-4	6.1634	3.1528	3.0106
5-9	6.2808	3.2085	3.0722
10-14	6.2982	3.2300	3.0681
15-19	6.1791	3.1620	3.0171
20-24	6.4824	3.3131	3.1693
25-29	6.9861	3.5883	3.3978
30-34	6.8375	3.4970	3.3405
35-39	6.8317	3.4728	3.3590
40-44	6.1328	3.0928	3.0399
45-49	6.4425	3.2550	3.1875
50-54	6.2773	3.1427	3.1347
55-59	6.7091	3.3170	3.3921
60-64	6.4172	3.1168	3.3003
65-69	5.4987	2.6383	2.8604
70-74	4.2068	1.9972	2.2096
75-79	2.6875	1.2582	1.4293
80-84	1.7072	0.7574	0.9498
85+	1.8617	0.6921	1.1695

Components of Change

	Total	Male	Female
Births	91,484	46,839	44,645
Deaths	54,734	28,576	26,158
Natural Increase	36,750	18,263	18,487
Net Migration	50,200	25,343	24,857
Total Change	86,950	43,606	43,344

Components as % of Previous Year's Total Population

	Total	Male	Female
Births	1.2623	0.6463	0.6160
Deaths	0.7552	0.3943	0.3609
Natural Increase	0.5071	0.2520	0.2551
Net Migration	0.6926	0.3497	0.3430
Total Change	1.1997	0.6017	0.5980

Single Year of Age

Age	Total	Male	Female	Age	Total	Male	Female	Age	Total	Male	Female
0-24	2,303,326	1,178,398	1,124,928	12	91,372	46,918	44,454	60-65	558,963	271,086	287,877
0	90,969	46,549	44,420	13	91,087	46,732	44,355	60	97,449	47,893	49,556
1	90,387	46,234	44,153	14	90,110	46,080	44,030	61	95,477	46,750	48,727
2	89,822	45,943	43,879	15	88,836	45,096	43,740	62	94,142	45,730	48,412
3	90,563	46,321	44,242	16	88,841	45,436	43,405	63	93,769	45,262	48,507
4	90,317	46,195	44,122	17	91,316	46,808	44,508	64	89,832	42,971	46,861
5	91,580	46,840	44,740	18	92,125	47,229	44,896	65	88,294	42,480	45,814
6	92,043	47,076	44,967	19	92,093	47,350	44,743				
7	91,350	46,720	44,630	20	92,561	47,406	45,155				
8	92,424	47,232	45,192	21	93,247	47,669	45,578				
9	93,267	47,464	45,803	22	94,225	48,189	46,036				
10	94,998	48,713	46,285	23	96,457	49,270	47,187				
11	94,375	48,465	45,910	24	98,961	50,463	48,498				

Median Age

Total	Male	Female
38.4	37.5	39.4

Notes:

- 1) Unrounded data should not be considered accurate to the last digit.
- 2) Single year of age data are provided to develop a variety of age groupings. Individual age numbers should not be considered reliable.
- 3) Totals may not add due to rounding.

**Population by Age and Sex
Population Forecast for April 1, 2019
State of Washington**

Five Year Age Groups

Age	Total	Male	Female
Total	7,417,659	3,700,948	3,716,711
0-4	456,606	233,567	223,039
5-9	461,729	236,111	225,618
10-14	468,171	239,890	228,281
15-19	454,545	232,320	222,225
20-24	474,576	242,774	231,802
25-29	517,446	265,091	252,355
30-34	505,494	258,854	246,640
35-39	510,602	259,874	250,728
40-44	458,638	231,611	227,027
45-49	465,446	234,823	230,623
50-54	456,775	229,333	227,442
55-59	491,274	243,020	248,254
60-64	474,833	231,356	243,477
65-69	414,990	198,322	216,668
70-74	325,608	154,770	170,838
75-79	211,449	98,858	112,591
80-84	130,779	58,298	72,481
85+	138,698	52,076	86,622

Percent of Total Population

Age	Total	Male	Female
Total	100.0000	49.8937	50.1063
0-4	6.1557	3.1488	3.0069
5-9	6.2247	3.1831	3.0416
10-14	6.3116	3.2340	3.0775
15-19	6.1279	3.1320	2.9959
20-24	6.3979	3.2729	3.1250
25-29	6.9759	3.5738	3.4021
30-34	6.8147	3.4897	3.3250
35-39	6.8836	3.5035	3.3801
40-44	6.1831	3.1224	3.0606
45-49	6.2748	3.1657	3.1091
50-54	6.1579	3.0917	3.0662
55-59	6.6230	3.2762	3.3468
60-64	6.4014	3.1190	3.2824
65-69	5.5946	2.6736	2.9210
70-74	4.3896	2.0865	2.3031
75-79	2.8506	1.3327	1.5179
80-84	1.7631	0.7859	0.9771
85+	1.8698	0.7021	1.1678

Components of Change

	Total	Male	Female
Births	92,248	47,230	45,018
Deaths	55,619	29,111	26,508
Natural Increase	36,629	18,119	18,510
Net Migration	46,500	23,469	23,031
Total Change	83,129	41,588	41,541

Components as % of Previous Year's Total Population

	Total	Male	Female
Births	1.2577	0.6439	0.6138
Deaths	0.7583	0.3969	0.3614
Natural Increase	0.4994	0.2470	0.2524
Net Migration	0.6340	0.3200	0.3140
Total Change	1.1334	0.5670	0.5664

Single Year of Age

Age	Total	Male	Female	Age	Total	Male	Female	Age	Total	Male	Female
0-24	2,315,627	1,184,662	1,130,965	12	94,974	48,781	46,193	60-65	564,097	273,946	290,151
0	91,734	46,941	44,793	13	91,920	47,199	44,721	60	95,919	47,089	48,830
1	91,184	46,642	44,542	14	91,624	47,007	44,617	61	97,019	47,580	49,439
2	91,358	46,727	44,631	15	90,630	46,343	44,287	62	95,016	46,418	48,598
3	90,807	46,446	44,361	16	89,382	45,369	44,013	63	93,649	45,381	48,268
4	91,523	46,811	44,712	17	89,413	45,712	43,701	64	93,230	44,888	48,342
5	91,191	46,640	44,551	18	91,998	47,150	44,848	65	89,264	42,590	46,674
6	92,398	47,258	45,140	19	93,122	47,746	45,376				
7	92,833	47,479	45,354	20	93,136	47,895	45,241				
8	92,121	47,113	45,008	21	93,772	47,996	45,776				
9	93,186	47,621	45,565	22	94,462	48,239	46,223				
10	94,024	47,849	46,175	23	95,461	48,767	46,694				
11	95,629	49,054	46,575	24	97,745	49,877	47,868				

Median Age

Total	Male	Female
38.6	37.7	39.6

Notes:

- 1) Unrounded data should not be considered accurate to the last digit.
- 2) Single year of age data are provided to develop a variety of age groupings. Individual age numbers should not be considered reliable.
- 3) Totals may not add due to rounding.

**Population by Age and Sex
Population Forecast for April 1, 2020
State of Washington**

Five Year Age Groups

Age	Total	Male	Female
Total	7,498,476	3,741,290	3,757,186
0-4	460,410	235,513	224,897
5-9	463,897	237,256	226,641
10-14	472,676	242,033	230,643
15-19	456,198	233,166	223,032
20-24	475,648	243,388	232,260
25-29	517,123	264,114	253,009
30-34	510,689	262,152	248,537
35-39	514,067	261,562	252,505
40-44	470,697	238,102	232,595
45-49	456,727	230,207	226,520
50-54	461,109	232,017	229,092
55-59	485,927	240,588	245,339
60-64	478,682	233,866	244,816
65-69	427,348	204,051	223,297
70-74	344,195	163,483	180,712
75-79	224,723	104,867	119,856
80-84	136,204	61,081	75,123
85+	142,156	53,844	88,312

Percent of Total Population

Age	Total	Male	Female
Total	100.0000	49.8940	50.1060
0-4	6.1400	3.1408	2.9992
5-9	6.1866	3.1641	3.0225
10-14	6.3036	3.2278	3.0759
15-19	6.0839	3.1095	2.9744
20-24	6.3433	3.2458	3.0974
25-29	6.8964	3.5222	3.3741
30-34	6.8106	3.4961	3.3145
35-39	6.8556	3.4882	3.3674
40-44	6.2772	3.1753	3.1019
45-49	6.0909	3.0701	3.0209
50-54	6.1494	3.0942	3.0552
55-59	6.4803	3.2085	3.2719
60-64	6.3837	3.1188	3.2649
65-69	5.6991	2.7212	2.9779
70-74	4.5902	2.1802	2.4100
75-79	2.9969	1.3985	1.5984
80-84	1.8164	0.8146	1.0018
85+	1.8958	0.7181	1.1777

Components of Change

	Total	Male	Female
Births	92,859	47,543	45,316
Deaths	56,542	29,660	26,882
Natural Increase	36,317	17,883	18,434
Net Migration	44,500	22,459	22,041
Total Change	80,817	40,342	40,475

Components as % of Previous Year's Total Population

	Total	Male	Female
Births	1.2519	0.6409	0.6109
Deaths	0.7623	0.3999	0.3624
Natural Increase	0.4896	0.2411	0.2485
Net Migration	0.5999	0.3028	0.2971
Total Change	1.0895	0.5439	0.5457

Single Year of Age

Age	Total	Male	Female	Age	Total	Male	Female	Age	Total	Male	Female
0-24	2,328,829	1,191,356	1,137,473	12	96,205	49,357	46,848	60-65	571,315	278,355	292,960
0	92,348	47,256	45,092	13	95,516	49,059	46,457	60	99,036	48,777	50,259
1	91,924	47,021	44,903	14	92,434	47,462	44,972	61	95,489	46,780	48,709
2	92,110	47,112	44,998	15	92,125	47,261	44,864	62	96,544	47,241	49,303
3	92,308	47,212	45,096	16	91,158	46,609	44,549	63	94,511	46,063	48,448
4	91,720	46,912	44,808	17	89,927	45,629	44,298	64	93,102	45,005	48,097
5	92,364	47,239	45,125	18	90,046	46,028	44,018	65	92,633	44,489	48,144
6	91,964	47,035	44,929	19	92,942	47,639	45,303				
7	93,151	47,643	45,508	20	94,121	48,266	45,855				
8	93,577	47,858	45,719	21	94,291	48,460	45,831				
9	92,841	47,481	45,360	22	94,930	48,539	46,391				
10	93,905	47,988	45,917	23	95,637	48,787	46,850				
11	94,616	48,167	46,449	24	96,669	49,336	47,333				

Median Age

Total	Male	Female
38.8	37.9	39.7

Notes:

- 1) Unrounded data should not be considered accurate to the last digit.
- 2) Single year of age data are provided to develop a variety of age groupings. Individual age numbers should not be considered reliable.
- 3) Totals may not add due to rounding.

**Population by Age and Sex
Population Forecast for April 1, 2021
State of Washington**

Five Year Age Groups				Percent of Total Population			
Age	Total	Male	Female	Age	Total	Male	Female
Total	7,577,197	3,780,514	3,796,683	Total	100.0000	49.8933	50.1067
0-4	464,365	237,538	226,827	0-4	6.1285	3.1349	2.9935
5-9	466,473	238,574	227,899	5-9	6.1563	3.1486	3.0077
10-14	475,924	243,527	232,397	10-14	6.2810	3.2139	3.0671
15-19	458,714	234,509	224,205	15-19	6.0539	3.0949	2.9589
20-24	477,403	244,331	233,072	20-24	6.3005	3.2246	3.0760
25-29	514,131	262,664	251,467	25-29	6.7852	3.4665	3.3187
30-34	517,447	265,330	252,117	30-34	6.8290	3.5017	3.3273
35-39	517,279	263,657	253,622	35-39	6.8268	3.4796	3.3472
40-44	484,149	244,907	239,242	40-44	6.3896	3.2322	3.1574
45-49	447,268	225,200	222,068	45-49	5.9028	2.9721	2.9307
50-54	470,766	237,143	233,623	50-54	6.2129	3.1297	3.0832
55-59	474,841	235,700	239,141	55-59	6.2667	3.1106	3.1561
60-64	482,038	235,672	246,366	60-64	6.3617	3.1103	3.2514
65-69	438,929	209,859	229,070	65-69	5.7928	2.7696	3.0231
70-74	363,984	172,443	191,541	70-74	4.8037	2.2758	2.5279
75-79	234,893	109,453	125,440	75-79	3.1000	1.4445	1.6555
80-84	142,821	64,274	78,547	80-84	1.8849	0.8483	1.0366
85+	145,772	55,733	90,039	85+	1.9238	0.7355	1.1883

Components of Change			
	Total	Male	Female
Births	93,310	47,774	45,536
Deaths	57,589	30,255	27,334
Natural Increase	35,721	17,519	18,202
Net Migration	43,000	21,705	21,295
Total Change	78,721	39,224	39,497

Components as % of Previous Year's Total Population			
	Total	Male	Female
Births	1.2444	0.6371	0.6073
Deaths	0.7680	0.4035	0.3645
Natural Increase	0.4764	0.2336	0.2427
Net Migration	0.5734	0.2895	0.2840
Total Change	1.0498	0.5231	0.5267

Single Year of Age											
Age	Total	Male	Female	Age	Total	Male	Female	Age	Total	Male	Female
0-24	2,342,879	1,198,479	1,144,400	12	95,163	48,453	46,710	60-65	574,541	280,278	294,263
0	92,802	47,489	45,313	13	96,731	49,626	47,105	60	98,451	48,206	50,245
1	92,518	47,326	45,192	14	96,029	49,322	46,707	61	98,587	48,456	50,131
2	92,818	47,475	45,343	15	92,918	47,708	45,210	62	95,017	46,447	48,570
3	93,028	47,581	45,447	16	92,639	47,521	45,118	63	96,027	46,880	49,147
4	93,199	47,667	45,532	17	91,689	46,864	44,825	64	93,956	45,683	48,273
5	92,529	47,324	45,205	18	90,537	45,931	44,606	65	92,503	44,606	47,897
6	93,115	47,623	45,492	19	90,931	46,485	44,446				
7	92,683	47,402	45,281	20	93,900	48,137	45,763				
8	93,867	48,008	45,859	21	95,239	48,811	46,428				
9	94,279	48,217	46,062	22	95,407	48,985	46,422				
10	93,528	47,832	45,696	23	96,060	49,066	46,994				
11	94,473	48,294	46,179	24	96,797	49,332	47,465				

Median Age		
Total	Male	Female
39.0	38.1	39.9

Notes:

- 1) Unrounded data should not be considered accurate to the last digit.
- 2) Single year of age data are provided to develop a variety of age groupings. Individual age numbers should not be considered reliable.
- 3) Totals may not add due to rounding.

**Population by Age and Sex
Population Forecast for April 1, 2022
State of Washington**

Five Year Age Groups				Percent of Total Population			
Age	Total	Male	Female	Age	Total	Male	Female
Total	7,656,260	3,819,854	3,836,406	Total	100.0000	49.8919	50.1081
0-4	467,371	239,079	228,292	0-4	6.1044	3.1227	2.9818
5-9	469,174	239,954	229,220	5-9	6.1280	3.1341	2.9939
10-14	477,071	243,924	233,147	10-14	6.2311	3.1859	3.0452
15-19	466,944	238,922	228,022	15-19	6.0989	3.1206	2.9782
20-24	477,114	244,171	232,943	20-24	6.2317	3.1892	3.0425
25-29	509,665	260,006	249,659	25-29	6.6568	3.3960	3.2608
30-34	528,150	270,617	257,533	30-34	6.8983	3.5346	3.3637
35-39	516,658	263,799	252,859	35-39	6.7482	3.4455	3.3026
40-44	497,385	251,924	245,461	40-44	6.4964	3.2904	3.2060
45-49	446,833	224,893	221,940	45-49	5.8362	2.9374	2.8988
50-54	474,571	239,233	235,338	50-54	6.1985	3.1247	3.0738
55-59	464,747	230,877	233,870	55-59	6.0702	3.0155	3.0546
60-64	482,638	236,206	246,432	60-64	6.3038	3.0851	3.2187
65-69	448,621	214,876	233,745	65-69	5.8595	2.8065	3.0530
70-74	369,814	174,893	194,921	70-74	4.8302	2.2843	2.5459
75-79	258,160	120,209	137,951	75-79	3.3719	1.5701	1.8018
80-84	151,379	68,443	82,936	80-84	1.9772	0.8939	1.0832
85+	149,965	57,828	92,137	85+	1.9587	0.7553	1.2034

Components of Change			
	Total	Male	Female
Births	93,750	48,000	45,750
Deaths	58,687	30,867	27,820
Natural Increase	35,063	17,133	17,930
Net Migration	44,000	22,207	21,793
Total Change	79,063	39,340	39,723

Components as % of Previous Year's Total Population			
	Total	Male	Female
Births	1.2373	0.6335	0.6038
Deaths	0.7745	0.4074	0.3672
Natural Increase	0.4627	0.2261	0.2366
Net Migration	0.5807	0.2931	0.2876
Total Change	1.0434	0.5192	0.5242

Single Year of Age											
Age	Total	Male	Female	Age	Total	Male	Female	Age	Total	Male	Female
0-24	2,357,674	1,206,050	1,151,624	12	95,028	48,585	46,443	60-65	576,004	281,493	294,511
0	93,246	47,717	45,529	13	95,692	48,722	46,970	60	96,503	47,588	48,915
1	92,989	47,568	45,421	14	97,259	49,896	47,363	61	98,020	47,897	50,123
2	93,435	47,791	45,644	15	96,542	49,583	46,959	62	98,114	48,119	49,995
3	93,760	47,956	45,804	16	93,447	47,976	45,471	63	94,523	46,100	48,423
4	93,941	48,047	45,894	17	93,190	47,787	45,403	64	95,478	46,502	48,976
5	94,035	48,093	45,942	18	92,322	47,180	45,142	65	93,366	45,287	48,079
6	93,294	47,715	45,579	19	91,443	46,396	45,047				
7	93,855	48,001	45,854	20	91,884	46,980	44,904				
8	93,407	47,771	45,636	21	95,035	48,690	46,345				
9	94,583	48,374	46,209	22	96,386	49,350	47,036				
10	94,988	48,579	46,409	23	96,563	49,527	47,036				
11	94,104	48,142	45,962	24	97,246	49,624	47,622				

Median Age		
Total	Male	Female
39.2	38.3	40.1

Notes:

- 1) Unrounded data should not be considered accurate to the last digit.
- 2) Single year of age data are provided to develop a variety of age groupings. Individual age numbers should not be considered reliable.
- 3) Totals may not add due to rounding.

**Population by Age and Sex
Population Forecast for April 1, 2023
State of Washington**

Five Year Age Groups

Age	Total	Male	Female
Total	7,735,627	3,859,305	3,876,322
0-4	470,199	240,530	229,669
5-9	472,403	241,602	230,801
10-14	477,344	243,931	233,413
15-19	476,008	244,061	231,947
20-24	476,986	243,675	233,311
25-29	505,400	257,271	248,129
30-34	538,081	275,884	262,197
35-39	516,560	263,961	252,599
40-44	509,107	258,498	250,609
45-49	453,116	228,095	225,021
50-54	472,228	237,772	234,456
55-59	455,969	226,909	229,060
60-64	482,405	236,223	246,182
65-69	455,212	218,501	236,711
70-74	378,749	179,139	199,610
75-79	276,763	128,604	148,159
80-84	163,703	74,114	89,589
85+	155,394	60,535	94,859

Percent of Total Population

Age	Total	Male	Female
Total	100.0000	49.8900	50.1100
0-4	6.0784	3.1094	2.9690
5-9	6.1068	3.1232	2.9836
10-14	6.1707	3.1533	3.0174
15-19	6.1535	3.1550	2.9984
20-24	6.1661	3.1500	3.0161
25-29	6.5334	3.3258	3.2076
30-34	6.9559	3.5664	3.3895
35-39	6.6777	3.4123	3.2654
40-44	6.5813	3.3417	3.2397
45-49	5.8575	2.9486	2.9089
50-54	6.1046	3.0737	3.0309
55-59	5.8944	2.9333	2.9611
60-64	6.2361	3.0537	3.1824
65-69	5.8846	2.8246	3.0600
70-74	4.8962	2.3158	2.5804
75-79	3.5778	1.6625	1.9153
80-84	2.1162	0.9581	1.1581
85+	2.0088	0.7825	1.2263

Components of Change

	Total	Male	Female
Births	94,227	48,244	45,983
Deaths	59,860	31,506	28,354
Natural Increase	34,367	16,738	17,629
Net Migration	45,000	22,713	22,287
Total Change	79,367	39,451	39,916

Components as % of Previous Year's Total Population

	Total	Male	Female
Births	1.2307	0.6301	0.6006
Deaths	0.7818	0.4115	0.3703
Natural Increase	0.4489	0.2186	0.2303
Net Migration	0.5878	0.2967	0.2911
Total Change	1.0366	0.5153	0.5214

Single Year of Age

Age	Total	Male	Female	Age	Total	Male	Female	Age	Total	Male	Female
0-24	2,372,940	1,213,799	1,159,141	12	94,666	48,437	46,229	60-65	577,299	282,331	294,968
0	93,726	47,963	45,763	13	95,565	48,859	46,706	60	97,136	47,859	49,277
1	93,449	47,805	45,644	14	96,223	48,992	47,231	61	96,091	47,290	48,801
2	93,928	48,044	45,884	15	97,787	50,164	47,623	62	97,564	47,571	49,993
3	94,400	48,284	46,116	16	97,102	49,867	47,235	63	97,617	47,767	49,850
4	94,696	48,434	46,262	17	94,012	48,249	45,763	64	93,997	45,736	48,261
5	94,797	48,483	46,314	18	93,845	48,115	45,730	65	94,894	46,108	48,786
6	94,825	48,496	46,329	19	93,262	47,666	45,596				
7	94,049	48,101	45,948	20	92,419	46,899	45,520				
8	94,601	48,381	46,220	21	93,015	47,530	45,485				
9	94,131	48,141	45,990	22	96,200	49,238	46,962				
10	95,307	48,744	46,563	23	97,577	49,908	47,669				
11	95,583	48,899	46,684	24	97,775	50,100	47,675				

Median Age

Total	Male	Female
39.4	38.5	40.3

Notes:

- 1) Unrounded data should not be considered accurate to the last digit.
- 2) Single year of age data are provided to develop a variety of age groupings. Individual age numbers should not be considered reliable.
- 3) Totals may not add due to rounding.

**Population by Age and Sex
Population Forecast for April 1, 2024
State of Washington**

Five Year Age Groups

Age	Total	Male	Female
Total	7,814,684	3,898,567	3,916,117
0-4	472,806	241,868	230,938
5-9	476,897	243,900	232,997
10-14	478,223	244,621	233,602
15-19	482,281	247,059	235,222
20-24	478,195	243,993	234,202
25-29	504,113	256,866	247,247
30-34	542,977	277,686	265,291
35-39	520,448	266,286	254,162
40-44	518,626	263,660	254,966
45-49	461,959	232,868	229,091
50-54	465,120	233,862	231,258
55-59	452,441	225,823	226,618
60-64	481,704	236,031	245,673
65-69	459,371	221,242	238,129
70-74	390,004	183,759	206,245
75-79	292,379	136,072	156,307
80-84	176,010	79,611	96,399
85+	161,130	63,360	97,770

Percent of Total Population

Age	Total	Male	Female
Total	100.0000	49.8877	50.1123
0-4	6.0502	3.0950	2.9552
5-9	6.1026	3.1210	2.9815
10-14	6.1195	3.1303	2.9893
15-19	6.1715	3.1615	3.0100
20-24	6.1192	3.1222	2.9969
25-29	6.4508	3.2870	3.1639
30-34	6.9482	3.5534	3.3948
35-39	6.6599	3.4075	3.2524
40-44	6.6366	3.3739	3.2627
45-49	5.9114	2.9799	2.9315
50-54	5.9519	2.9926	2.9593
55-59	5.7896	2.8897	2.8999
60-64	6.1641	3.0204	3.1437
65-69	5.8783	2.8311	3.0472
70-74	4.9907	2.3515	2.6392
75-79	3.7414	1.7412	2.0002
80-84	2.2523	1.0187	1.2336
85+	2.0619	0.8108	1.2511

Components of Change

	Total	Male	Female
Births	94,716	48,494	46,222
Deaths	61,159	32,202	28,957
Natural Increase	33,557	16,292	17,265
Net Migration	45,500	22,970	22,530
Total Change	79,057	39,262	39,795

Components as % of Previous Year's Total Population

	Total	Male	Female
Births	1.2244	0.6269	0.5975
Deaths	0.7906	0.4163	0.3743
Natural Increase	0.4338	0.2106	0.2232
Net Migration	0.5882	0.2969	0.2912
Total Change	1.0220	0.5075	0.5144

Single Year of Age

Age	Total	Male	Female	Age	Total	Male	Female	Age	Total	Male	Female
0-24	2,388,402	1,221,441	1,166,961	12	96,157	49,200	46,957	60-65	575,138	281,387	293,751
0	94,218	48,215	46,003	13	95,204	48,712	46,492	60	95,155	46,866	48,289
1	93,937	48,055	45,882	14	96,099	49,131	46,968	61	96,731	47,565	49,166
2	94,399	48,287	46,112	15	96,748	49,256	47,492	62	95,652	46,974	48,678
3	94,905	48,543	46,362	16	98,357	50,453	47,904	63	97,082	47,230	49,852
4	95,347	48,768	46,579	17	97,693	50,153	47,540	64	97,084	47,396	49,688
5	95,564	48,876	46,688	18	94,677	48,583	46,094	65	93,434	45,356	48,078
6	95,598	48,892	46,706	19	94,806	48,614	46,192				
7	95,596	48,890	46,706	20	94,263	48,186	46,077				
8	94,800	48,484	46,316	21	93,564	47,451	46,113				
9	95,339	48,758	46,581	22	94,164	48,069	46,095				
10	94,856	48,511	46,345	23	97,394	49,797	47,597				
11	95,907	49,067	46,840	24	98,810	50,490	48,320				

Median Age

Total	Male	Female
39.5	38.6	40.5

Notes:

- 1) Unrounded data should not be considered accurate to the last digit.
- 2) Single year of age data are provided to develop a variety of age groupings. Individual age numbers should not be considered reliable.
- 3) Totals may not add due to rounding.

**Population by Age and Sex
Population Forecast for April 1, 2025
State of Washington**

Five Year Age Groups

Age	Total	Male	Female
Total	7,893,345	3,937,597	3,955,748
0-4	475,243	243,119	232,124
5-9	480,886	245,942	234,944
10-14	480,461	245,803	234,658
15-19	486,936	249,272	237,664
20-24	479,963	244,895	235,068
25-29	505,285	257,540	247,745
30-34	542,610	276,661	265,949
35-39	525,852	269,713	256,139
40-44	522,176	265,393	256,783
45-49	474,185	239,447	234,738
50-54	456,518	229,334	227,184
55-59	456,917	228,591	228,326
60-64	476,643	233,788	242,855
65-69	463,362	223,813	239,549
70-74	401,988	189,288	212,700
75-79	309,339	143,887	165,452
80-84	187,371	84,617	102,754
85+	167,610	66,494	101,116

Percent of Total Population

Age	Total	Male	Female
Total	100.0000	49.8850	50.1150
0-4	6.0208	3.0801	2.9408
5-9	6.0923	3.1158	2.9765
10-14	6.0869	3.1141	2.9729
15-19	6.1689	3.1580	3.0109
20-24	6.0806	3.1026	2.9781
25-29	6.4014	3.2627	3.1387
30-34	6.8743	3.5050	3.3693
35-39	6.6620	3.4170	3.2450
40-44	6.6154	3.3622	3.2532
45-49	6.0074	3.0335	2.9739
50-54	5.7836	2.9054	2.8782
55-59	5.7886	2.8960	2.8926
60-64	6.0385	2.9618	3.0767
65-69	5.8703	2.8355	3.0348
70-74	5.0927	2.3981	2.6947
75-79	3.9190	1.8229	2.0961
80-84	2.3738	1.0720	1.3018
85+	2.1234	0.8424	1.2810

Components of Change

	Total	Male	Female
Births	95,154	48,718	46,436
Deaths	62,493	32,909	29,584
Natural Increase	32,661	15,809	16,852
Net Migration	46,000	23,221	22,779
Total Change	78,661	39,030	39,631

Components as % of Previous Year's Total Population

	Total	Male	Female
Births	1.2176	0.6234	0.5942
Deaths	0.7997	0.4211	0.3786
Natural Increase	0.4179	0.2023	0.2156
Net Migration	0.5886	0.2971	0.2915
Total Change	1.0066	0.4994	0.5071

Single Year of Age

Age	Total	Male	Female	Age	Total	Male	Female	Age	Total	Male	Female
0-24	2,403,489	1,229,031	1,174,458	12	96,486	49,371	47,115	60-65	573,157	280,797	292,360
0	94,660	48,441	46,219	13	96,705	49,480	47,225	60	93,822	46,437	47,385
1	94,438	48,312	46,126	14	95,738	48,984	46,754	61	94,768	46,584	48,184
2	94,898	48,543	46,355	15	96,625	49,397	47,228	62	96,300	47,254	49,046
3	95,385	48,791	46,594	16	97,315	49,541	47,774	63	95,188	46,643	48,545
4	95,862	49,032	46,830	17	98,959	50,744	48,215	64	96,565	46,870	49,695
5	96,226	49,216	47,010	18	98,386	50,501	47,885	65	96,514	47,009	49,505
6	96,376	49,291	47,085	19	95,651	49,089	46,562				
7	96,379	49,291	47,088	20	95,829	49,147	46,682				
8	96,363	49,281	47,082	21	95,437	48,757	46,680				
9	95,542	48,863	46,679	22	94,725	47,991	46,734				
10	96,076	49,134	46,942	23	95,340	48,618	46,722				
11	95,456	48,834	46,622	24	98,632	50,382	48,250				

Median Age

Total	Male	Female
39.7	38.8	40.6

Notes:

- 1) Unrounded data should not be considered accurate to the last digit.
- 2) Single year of age data are provided to develop a variety of age groupings. Individual age numbers should not be considered reliable.
- 3) Totals may not add due to rounding.

**Population by Age and Sex
Population Forecast for April 1, 2026
State of Washington**

Five Year Age Groups

Age	Total	Male	Female
Total	7,971,445	3,976,331	3,995,114
0-4	477,559	244,309	233,250
5-9	485,241	248,171	237,070
10-14	483,294	247,254	236,040
15-19	490,441	250,892	239,549
20-24	482,817	246,411	236,406
25-29	507,468	258,702	248,766
30-34	539,745	275,284	264,461
35-39	533,056	273,106	259,950
40-44	525,588	267,601	257,987
45-49	487,871	246,367	241,504
50-54	447,243	224,452	222,791
55-59	466,679	233,758	232,921
60-64	465,979	229,169	236,810
65-69	466,936	225,728	241,208
70-74	413,229	194,888	218,341
75-79	327,233	151,832	175,401
80-84	196,047	88,430	107,617
85+	175,019	69,977	105,042

Percent of Total Population

Age	Total	Male	Female
Total	100.0000	49.8822	50.1178
0-4	5.9909	3.0648	2.9261
5-9	6.0872	3.1132	2.9740
10-14	6.0628	3.1017	2.9611
15-19	6.1525	3.1474	3.0051
20-24	6.0568	3.0912	2.9657
25-29	6.3661	3.2454	3.1207
30-34	6.7710	3.4534	3.3176
35-39	6.6871	3.4261	3.2610
40-44	6.5934	3.3570	3.2364
45-49	6.1202	3.0906	3.0296
50-54	5.6106	2.8157	2.7949
55-59	5.8544	2.9324	2.9219
60-64	5.8456	2.8749	2.9707
65-69	5.8576	2.8317	3.0259
70-74	5.1839	2.4448	2.7390
75-79	4.1051	1.9047	2.2004
80-84	2.4594	1.1093	1.3500
85+	2.1956	0.8778	1.3177

Components of Change

	Total	Male	Female
Births	95,509	48,900	46,609
Deaths	63,909	33,646	30,263
Natural Increase	31,600	15,254	16,346
Net Migration	46,500	23,480	23,020
Total Change	78,100	38,734	39,366

Components as % of Previous Year's Total Population

	Total	Male	Female
Births	1.2100	0.6195	0.5905
Deaths	0.8097	0.4263	0.3834
Natural Increase	0.4003	0.1933	0.2071
Net Migration	0.5891	0.2975	0.2916
Total Change	0.9894	0.4907	0.4987

Single Year of Age

Age	Total	Male	Female	Age	Total	Male	Female	Age	Total	Male	Female
0-24	2,419,352	1,237,037	1,182,315	12	96,035	49,138	46,897	60-65	561,990	275,663	286,327
0	95,018	48,625	46,393	13	97,039	49,654	47,385	60	87,643	43,500	44,143
1	94,888	48,542	46,346	14	97,250	49,758	47,492	61	93,448	46,163	47,285
2	95,408	48,805	46,603	15	96,265	49,251	47,014	62	94,355	46,285	48,070
3	95,894	49,052	46,842	16	97,193	49,684	47,509	63	95,843	46,927	48,916
4	96,351	49,285	47,066	17	97,913	49,828	48,085	64	94,690	46,294	48,396
5	96,750	49,485	47,265	18	99,666	51,099	48,567	65	96,011	46,494	49,517
6	97,047	49,636	47,411	19	99,404	51,030	48,374				
7	97,167	49,695	47,472	20	96,688	49,630	47,058				
8	97,156	49,687	47,469	21	97,028	49,732	47,296				
9	97,121	49,668	47,453	22	96,627	49,315	47,312				
10	96,284	49,242	47,042	23	95,916	48,543	47,373				
11	96,686	49,462	47,224	24	96,558	49,191	47,367				

Median Age

Total	Male	Female
39.9	38.9	40.8

Notes:

- 1) Unrounded data should not be considered accurate to the last digit.
- 2) Single year of age data are provided to develop a variety of age groupings. Individual age numbers should not be considered reliable.
- 3) Totals may not add due to rounding.

Population by Age and Sex
Population Forecast for April 1, 2027
State of Washington

Five Year Age Groups

Age	Total	Male	Female
Total	8,048,958	4,014,770	4,034,188
0-4	479,817	245,468	234,349
5-9	488,550	249,871	238,679
10-14	486,226	248,752	237,474
15-19	491,734	251,358	240,376
20-24	491,633	251,131	240,502
25-29	507,409	258,660	248,749
30-34	535,287	272,622	262,665
35-39	544,248	278,638	265,610
40-44	525,070	267,811	257,259
45-49	501,316	253,489	247,827
50-54	446,959	224,236	222,723
55-59	470,580	235,894	234,686
60-64	456,278	224,604	231,674
65-69	467,801	226,411	241,390
70-74	422,674	199,751	222,923
75-79	332,989	154,278	178,711
80-84	216,172	97,514	118,658
85+	184,215	74,282	109,933

Percent of Total Population

Age	Total	Male	Female
Total	100.0000	49.8794	50.1206
0-4	5.9612	3.0497	2.9115
5-9	6.0697	3.1044	2.9653
10-14	6.0409	3.0905	2.9504
15-19	6.1093	3.1229	2.9864
20-24	6.1080	3.1200	2.9880
25-29	6.3040	3.2136	3.0904
30-34	6.6504	3.3870	3.2633
35-39	6.7617	3.4618	3.2999
40-44	6.5235	3.3273	3.1962
45-49	6.2283	3.1493	3.0790
50-54	5.5530	2.7859	2.7671
55-59	5.8465	2.9307	2.9157
60-64	5.6688	2.7905	2.8783
65-69	5.8119	2.8129	2.9990
70-74	5.2513	2.4817	2.7696
75-79	4.1370	1.9167	2.2203
80-84	2.6857	1.2115	1.4742
85+	2.2887	0.9229	1.3658

Components of Change

	Total	Male	Female
Births	95,897	49,099	46,798
Deaths	65,384	34,395	30,989
Natural Increase	30,513	14,704	15,809
Net Migration	47,000	23,735	23,265
Total Change	77,513	38,439	39,074

Components as % of Previous Year's Total Population

	Total	Male	Female
Births	1.2030	0.6159	0.5871
Deaths	0.8202	0.4315	0.3888
Natural Increase	0.3828	0.1845	0.1983
Net Migration	0.5896	0.2978	0.2919
Total Change	0.9724	0.4822	0.4902

Single Year of Age

Age	Total	Male	Female	Age	Total	Male	Female	Age	Total	Male	Female
0-24	2,437,960	1,246,580	1,191,380	12	97,274	49,771	47,503	60-65	550,435	270,534	279,901
0	95,409	48,826	46,583	13	96,587	49,420	47,167	60	86,657	42,930	43,727
1	95,255	48,731	46,524	14	97,588	49,934	47,654	61	87,302	43,248	44,054
2	95,869	49,041	46,828	15	97,788	50,030	47,758	62	93,049	45,872	47,177
3	96,414	49,319	47,095	16	96,835	49,539	47,296	63	93,917	45,971	47,946
4	96,870	49,551	47,319	17	97,794	49,974	47,820	64	95,353	46,583	48,770
5	97,247	49,742	47,505	18	98,615	50,178	48,437	65	94,157	45,930	48,227
6	97,579	49,909	47,670	19	100,702	51,637	49,065				
7	97,847	50,045	47,802	20	100,488	51,596	48,892				
8	97,954	50,096	47,858	21	97,904	50,225	47,679				
9	97,923	50,079	47,844	22	98,244	50,305	47,939				
10	97,879	50,055	47,824	23	97,847	49,885	47,962				
11	96,898	49,572	47,326	24	97,150	49,120	48,030				

Median Age

Total	Male	Female
40.0	39.1	41.0

Notes:

- 1) Unrounded data should not be considered accurate to the last digit.
- 2) Single year of age data are provided to develop a variety of age groupings. Individual age numbers should not be considered reliable.
- 3) Totals may not add due to rounding.

**Population by Age and Sex
Population Forecast for April 1, 2028
State of Washington**

Five Year Age Groups

Age	Total	Male	Female
Total	8,125,851	4,052,898	4,072,953
0-4	482,066	246,622	235,444
5-9	491,622	251,451	240,171
10-14	489,659	250,504	239,155
15-19	492,081	251,398	240,683
20-24	501,301	256,608	244,693
25-29	507,446	258,220	249,226
30-34	530,987	269,853	261,134
35-39	554,565	284,111	270,454
40-44	525,065	268,029	257,036
45-49	513,210	260,152	253,058
50-54	453,355	227,495	225,860
55-59	468,358	234,510	233,848
60-64	447,868	220,877	226,991
65-69	467,862	226,599	241,263
70-74	429,243	203,344	225,899
75-79	341,610	158,346	183,264
80-84	232,466	104,705	127,761
85+	197,087	80,074	117,013

Percent of Total Population

Age	Total	Male	Female
Total	100.0000	49.8766	50.1234
0-4	5.9325	3.0350	2.8975
5-9	6.0501	3.0945	2.9556
10-14	6.0259	3.0828	2.9431
15-19	6.0557	3.0938	2.9619
20-24	6.1692	3.1579	3.0113
25-29	6.2448	3.1778	3.0671
30-34	6.5345	3.3209	3.2136
35-39	6.8247	3.4964	3.3283
40-44	6.4617	3.2985	3.1632
45-49	6.3158	3.2015	3.1142
50-54	5.5792	2.7996	2.7795
55-59	5.7638	2.8860	2.8778
60-64	5.5116	2.7182	2.7934
65-69	5.7577	2.7886	2.9691
70-74	5.2824	2.5024	2.7800
75-79	4.2040	1.9487	2.2553
80-84	2.8608	1.2885	1.5723
85+	2.4254	0.9854	1.4400

Components of Change

	Total	Male	Female
Births	96,366	49,339	47,027
Deaths	66,973	35,194	31,779
Natural Increase	29,393	14,145	15,248
Net Migration	47,500	23,983	23,517
Total Change	76,893	38,128	38,765

Components as % of Previous Year's Total Population

	Total	Male	Female
Births	1.1972	0.6130	0.5843
Deaths	0.8321	0.4372	0.3948
Natural Increase	0.3652	0.1757	0.1894
Net Migration	0.5901	0.2980	0.2922
Total Change	0.9553	0.4737	0.4816

Single Year of Age

Age	Total	Male	Female	Age	Total	Male	Female	Age	Total	Male	Female
0-24	2,456,729	1,256,583	1,200,146	12	97,490	49,883	47,607	60-65	542,696	267,100	275,596
0	95,882	49,068	46,814	13	97,836	50,058	47,778	60	88,531	44,004	44,527
1	95,654	48,937	46,717	14	97,137	49,701	47,436	61	86,327	42,686	43,641
2	96,245	49,234	47,011	15	98,131	50,209	47,922	62	86,937	42,981	43,956
3	96,885	49,560	47,325	16	98,369	50,324	48,045	63	92,625	45,566	47,059
4	97,400	49,823	47,577	17	97,436	49,829	47,607	64	93,448	45,640	47,808
5	97,776	50,014	47,762	18	98,500	50,327	48,173	65	94,828	46,223	48,605
6	98,084	50,170	47,914	19	99,645	50,709	48,936				
7	98,387	50,322	48,065	20	101,806	52,213	49,593				
8	98,644	50,452	48,192	21	101,757	52,217	49,540				
9	98,731	50,493	48,238	22	99,137	50,807	48,330				
10	98,690	50,470	48,220	23	99,490	50,890	48,600				
11	98,506	50,392	48,114	24	99,111	50,481	48,630				

Median Age

Total	Male	Female
40.1	39.2	41.1

Notes:

- 1) Unrounded data should not be considered accurate to the last digit.
- 2) Single year of age data are provided to develop a variety of age groupings. Individual age numbers should not be considered reliable.
- 3) Totals may not add due to rounding.

**Population by Age and Sex
Population Forecast for April 1, 2029
State of Washington**

Five Year Age Groups

Age	Total	Male	Female
Total	8,201,985	4,090,672	4,111,313
0-4	484,323	247,779	236,544
5-9	494,458	252,909	241,549
10-14	494,395	252,926	241,469
15-19	493,058	252,148	240,910
20-24	508,068	259,850	248,218
25-29	508,898	258,642	250,256
30-34	529,802	269,521	260,281
35-39	559,676	286,004	273,672
40-44	529,112	270,447	258,665
45-49	522,874	265,386	257,488
50-54	462,305	232,320	229,985
55-59	461,422	230,717	230,705
60-64	444,619	219,961	224,658
65-69	467,431	226,567	240,864
70-74	433,470	206,084	227,386
75-79	352,255	162,699	189,556
80-84	246,023	111,041	134,982
85+	209,796	85,671	124,125

Percent of Total Population

Age	Total	Male	Female
Total	100.0000	49.8742	50.1258
0-4	5.9049	3.0210	2.8840
5-9	6.0285	3.0835	2.9450
10-14	6.0277	3.0837	2.9440
15-19	6.0114	3.0742	2.9372
20-24	6.1945	3.1681	3.0263
25-29	6.2046	3.1534	3.0512
30-34	6.4594	3.2860	3.1734
35-39	6.8237	3.4870	3.3367
40-44	6.4510	3.2973	3.1537
45-49	6.3750	3.2356	3.1393
50-54	5.6365	2.8325	2.8040
55-59	5.6257	2.8129	2.8128
60-64	5.4209	2.6818	2.7391
65-69	5.6990	2.7623	2.9367
70-74	5.2849	2.5126	2.7723
75-79	4.2948	1.9837	2.3111
80-84	2.9996	1.3538	1.6457
85+	2.5579	1.0445	1.5134

Components of Change

	Total	Male	Female
Births	96,864	49,594	47,270
Deaths	68,730	36,053	32,677
Natural Increase	28,134	13,541	14,593
Net Migration	48,000	24,233	23,767
Total Change	76,134	37,774	38,360

Components as % of Previous Year's Total Population

	Total	Male	Female
Births	1.1920	0.6103	0.5817
Deaths	0.8458	0.4437	0.4021
Natural Increase	0.3462	0.1666	0.1796
Net Migration	0.5907	0.2982	0.2925
Total Change	0.9369	0.4649	0.4721

Single Year of Age

Age	Total	Male	Female	Age	Total	Male	Female	Age	Total	Male	Female
0-24	2,474,302	1,265,612	1,208,690	12	99,111	50,710	48,401	60-65	537,563	265,255	272,308
0	96,383	49,325	47,058	13	98,056	50,172	47,884	60	91,721	45,831	45,890
1	96,137	49,183	46,954	14	98,396	50,344	48,052	61	88,202	43,759	44,443
2	96,654	49,445	47,209	15	97,681	49,977	47,704	62	85,975	42,427	43,548
3	97,269	49,757	47,512	16	98,719	50,506	48,213	63	86,550	42,700	43,850
4	97,880	50,069	47,811	17	98,983	50,621	48,362	64	92,171	45,244	46,927
5	98,314	50,289	48,025	18	98,142	50,182	47,960	65	92,944	45,294	47,650
6	98,621	50,446	48,175	19	99,533	50,862	48,671				
7	98,901	50,587	48,314	20	100,742	51,277	49,465				
8	99,192	50,733	48,459	21	103,098	52,845	50,253				
9	99,430	50,854	48,576	22	103,045	52,825	50,220				
10	99,508	50,889	48,619	23	100,401	51,401	49,000				
11	99,324	50,811	48,513	24	100,782	51,502	49,280				

Median Age

Total	Male	Female
40.3	39.4	41.2

Notes:

- 1) Unrounded data should not be considered accurate to the last digit.
- 2) Single year of age data are provided to develop a variety of age groupings. Individual age numbers should not be considered reliable.
- 3) Totals may not add due to rounding.

**Population by Age and Sex
Population Forecast for April 1, 2030
State of Washington**

Five Year Age Groups

Age	Total	Male	Female
Total	8,277,397	4,128,131	4,149,266
0-4	486,629	248,961	237,668
5-9	497,116	254,273	242,843
10-14	498,612	255,088	243,524
15-19	495,435	253,404	242,031
20-24	513,146	262,267	250,879
25-29	510,949	259,686	251,263
30-34	531,193	270,312	260,881
35-39	559,377	284,999	274,378
40-44	534,720	273,992	260,728
45-49	526,557	267,193	259,364
50-54	474,678	238,971	235,707
55-59	453,066	226,361	226,705
60-64	449,261	222,814	226,447
65-69	462,788	224,582	238,206
70-74	437,622	208,711	228,911
75-79	363,581	167,884	195,697
80-84	260,629	117,605	143,024
85+	222,038	91,028	131,010

Percent of Total Population

Age	Total	Male	Female
Total	100.0000	49.8723	50.1277
0-4	5.8790	3.0077	2.8713
5-9	6.0057	3.0719	2.9338
10-14	6.0238	3.0817	2.9420
15-19	5.9854	3.0614	2.9240
20-24	6.1994	3.1685	3.0309
25-29	6.1728	3.1373	3.0355
30-34	6.4174	3.2657	3.1517
35-39	6.7579	3.4431	3.3148
40-44	6.4600	3.3101	3.1499
45-49	6.3614	3.2280	3.1334
50-54	5.7346	2.8870	2.8476
55-59	5.4735	2.7347	2.7388
60-64	5.4276	2.6918	2.7357
65-69	5.5910	2.7132	2.8778
70-74	5.2870	2.5215	2.7655
75-79	4.3925	2.0282	2.3642
80-84	3.1487	1.4208	1.7279
85+	2.6825	1.0997	1.5827

Components of Change

	Total	Male	Female
Births	97,357	49,846	47,511
Deaths	70,445	36,877	33,568
Natural Increase	26,912	12,969	13,943
Net Migration	48,500	24,490	24,010
Total Change	75,412	37,459	37,953

Components as % of Previous Year's Total Population

	Total	Male	Female
Births	1.1870	0.6077	0.5793
Deaths	0.8589	0.4496	0.4093
Natural Increase	0.3281	0.1581	0.1700
Net Migration	0.5913	0.2986	0.2927
Total Change	0.9194	0.4567	0.4627

Single Year of Age

Age	Total	Male	Female	Age	Total	Male	Female	Age	Total	Male	Female
0-24	2,490,938	1,273,993	1,216,945	12	99,937	51,133	48,804	60-65	540,945	267,722	273,223
0	96,878	49,578	47,300	13	99,689	51,005	48,684	60	98,289	49,176	49,113
1	96,646	49,445	47,201	14	98,619	50,460	48,159	61	91,386	45,580	45,806
2	97,147	49,696	47,451	15	98,948	50,624	48,324	62	87,850	43,499	44,351
3	97,686	49,972	47,714	16	98,268	50,274	47,994	63	85,602	42,155	43,447
4	98,272	50,270	48,002	17	99,338	50,805	48,533	64	86,134	42,404	43,730
5	98,803	50,540	48,263	18	99,704	50,982	48,722	65	91,684	44,908	46,776
6	99,167	50,725	48,442	19	99,177	50,719	48,458				
7	99,446	50,867	48,579	20	100,633	51,434	49,199				
8	99,714	51,002	48,712	21	102,027	51,901	50,126				
9	99,986	51,139	48,847	22	104,410	53,464	50,946				
10	100,216	51,255	48,961	23	104,365	53,446	50,919				
11	100,151	51,235	48,916	24	101,711	52,022	49,689				

Median Age

Total	Male	Female
40.4	39.6	41.3

Notes:

- 1) Unrounded data should not be considered accurate to the last digit.
- 2) Single year of age data are provided to develop a variety of age groupings. Individual age numbers should not be considered reliable.
- 3) Totals may not add due to rounding.

**Population by Age and Sex
Population Forecast for April 1, 2031
State of Washington**

Five Year Age Groups

Age	Total	Male	Female
Total	8,351,552	4,164,997	4,186,555
0-4	488,745	250,047	238,698
5-9	499,620	255,558	244,062
10-14	503,181	257,429	245,752
15-19	498,411	254,930	243,481
20-24	516,978	264,038	252,940
25-29	514,119	261,366	252,753
30-34	533,604	271,593	262,011
35-39	556,488	283,616	272,872
40-44	542,140	277,487	264,653
45-49	530,075	269,464	260,611
50-54	488,488	245,943	242,545
55-59	444,034	221,651	222,383
60-64	459,048	227,973	231,075
65-69	452,650	220,286	232,364
70-74	441,354	210,701	230,653
75-79	374,133	173,081	201,052
80-84	275,785	124,143	151,642
85+	232,699	95,691	137,008

Percent of Total Population

Age	Total	Male	Female
Total	100.0000	49.8709	50.1291
0-4	5.8521	2.9940	2.8581
5-9	5.9824	3.0600	2.9224
10-14	6.0250	3.0824	2.9426
15-19	5.9679	3.0525	2.9154
20-24	6.1902	3.1615	3.0287
25-29	6.1560	3.1296	3.0264
30-34	6.3893	3.2520	3.1373
35-39	6.6633	3.3960	3.2673
40-44	6.4915	3.3226	3.1689
45-49	6.3470	3.2265	3.1205
50-54	5.8491	2.9449	2.9042
55-59	5.3168	2.6540	2.6628
60-64	5.4966	2.7297	2.7669
65-69	5.4200	2.6377	2.7823
70-74	5.2847	2.5229	2.7618
75-79	4.4798	2.0724	2.4074
80-84	3.3022	1.4865	1.8157
85+	2.7863	1.1458	1.6405

Components of Change

	Total	Male	Female
Births	97,542	49,941	47,601
Deaths	72,087	37,664	34,423
Natural Increase	25,455	12,277	13,178
Net Migration	48,700	24,589	24,111
Total Change	74,155	36,866	37,289

Components as % of Previous Year's Total Population

	Total	Male	Female
Births	1.1784	0.6033	0.5751
Deaths	0.8709	0.4550	0.4159
Natural Increase	0.3075	0.1483	0.1592
Net Migration	0.5883	0.2971	0.2913
Total Change	0.8959	0.4454	0.4505

Single Year of Age

Age	Total	Male	Female	Age	Total	Male	Female	Age	Total	Male	Female
0-24	2,506,935	1,282,002	1,224,933	12	100,768	51,559	49,209	60-65	544,734	270,067	274,667
0	97,068	49,676	47,392	13	100,518	51,430	49,088	60	97,410	48,655	48,755
1	97,145	49,700	47,445	14	100,260	51,297	48,963	61	97,937	48,912	49,025
2	97,659	49,960	47,699	15	99,172	50,741	48,431	62	91,028	45,314	45,714
3	98,182	50,225	47,957	16	99,542	50,924	48,618	63	87,475	43,225	44,250
4	98,691	50,486	48,205	17	98,883	50,571	48,312	64	85,198	41,867	43,331
5	99,197	50,742	48,455	18	100,060	51,167	48,893	65	85,686	42,094	43,592
6	99,658	50,977	48,681	19	100,754	51,527	49,227				
7	99,994	51,147	48,847	20	100,271	51,289	48,982				
8	100,261	51,283	48,978	21	101,915	52,059	49,856				
9	100,510	51,409	49,101	22	103,324	52,508	50,816				
10	100,774	51,541	49,233	23	105,744	54,091	51,653				
11	100,861	51,602	49,259	24	105,724	54,091	51,633				

Median Age

Total	Male	Female
40.6	39.7	41.5

Notes:

- 1) Unrounded data should not be considered accurate to the last digit.
- 2) Single year of age data are provided to develop a variety of age groupings. Individual age numbers should not be considered reliable.
- 3) Totals may not add due to rounding.

**Population by Age and Sex
Population Forecast for April 1, 2032
State of Washington**

Five Year Age Groups

Age	Total	Male	Female
Total	8,424,657	4,201,381	4,223,276
0-4	490,955	251,180	239,775
5-9	502,013	256,786	245,227
10-14	506,637	259,205	247,432
15-19	501,446	256,482	244,964
20-24	518,354	264,537	253,817
25-29	523,556	266,401	257,155
30-34	533,577	271,570	262,007
35-39	551,950	280,907	271,043
40-44	553,572	283,137	270,435
45-49	529,609	269,711	259,898
50-54	502,033	253,107	248,926
55-59	443,890	221,528	222,362
60-64	463,007	230,135	232,872
65-69	443,429	216,029	227,400
70-74	442,478	211,528	230,950
75-79	383,057	177,635	205,422
80-84	281,266	126,488	154,778
85+	253,828	105,015	148,813

Percent of Total Population

Age	Total	Male	Female
Total	100.0000	49.8701	50.1299
0-4	5.8276	2.9815	2.8461
5-9	5.9589	3.0480	2.9108
10-14	6.0137	3.0767	2.9370
15-19	5.9521	3.0444	2.9077
20-24	6.1528	3.1400	3.0128
25-29	6.2146	3.1622	3.0524
30-34	6.3335	3.2235	3.1100
35-39	6.5516	3.3343	3.2173
40-44	6.5709	3.3608	3.2100
45-49	6.2864	3.2014	3.0850
50-54	5.9591	3.0044	2.9547
55-59	5.2689	2.6295	2.6394
60-64	5.4959	2.7317	2.7642
65-69	5.2635	2.5642	2.6992
70-74	5.2522	2.5108	2.7414
75-79	4.5469	2.1085	2.4383
80-84	3.3386	1.5014	1.8372
85+	3.0129	1.2465	1.7664

Components of Change

	Total	Male	Female
Births	98,053	50,203	47,850
Deaths	73,648	38,404	35,244
Natural Increase	24,405	11,799	12,606
Net Migration	48,700	24,585	24,115
Total Change	73,105	36,384	36,721

Components as % of Previous Year's Total Population

	Total	Male	Female
Births	1.1741	0.6011	0.5729
Deaths	0.8818	0.4598	0.4220
Natural Increase	0.2922	0.1413	0.1509
Net Migration	0.5831	0.2944	0.2887
Total Change	0.8753	0.4357	0.4397

Single Year of Age

Age	Total	Male	Female	Age	Total	Male	Female	Age	Total	Male	Female
0-24	2,519,405	1,288,190	1,231,215	12	101,478	51,926	49,552	60-65	547,769	271,700	276,069
0	97,582	49,940	47,642	13	101,351	51,857	49,494	60	90,670	45,141	45,529
1	97,336	49,799	47,537	14	101,091	51,723	49,368	61	97,066	48,397	48,669
2	98,158	50,215	47,943	15	100,818	51,580	49,238	62	97,558	48,630	48,928
3	98,693	50,488	48,205	16	99,763	51,040	48,723	63	90,644	45,033	45,611
4	99,186	50,738	48,448	17	100,161	51,223	48,938	64	87,069	42,934	44,135
5	99,613	50,956	48,657	18	99,597	50,929	48,668	65	84,762	41,565	43,197
6	100,050	51,178	48,872	19	101,107	51,710	49,397				
7	100,484	51,399	49,085	20	101,860	52,103	49,757				
8	100,809	51,563	49,246	21	101,541	51,909	49,632				
9	101,057	51,690	49,367	22	103,203	52,665	50,538				
10	101,298	51,811	49,487	23	104,638	53,121	51,517				
11	101,419	51,888	49,531	24	107,112	54,739	52,373				

Median Age

Total	Male	Female
40.7	39.9	41.6

Notes:

- 1) Unrounded data should not be considered accurate to the last digit.
- 2) Single year of age data are provided to develop a variety of age groupings. Individual age numbers should not be considered reliable.
- 3) Totals may not add due to rounding.

**Population by Age and Sex
Population Forecast for April 1, 2033
State of Washington**

Five Year Age Groups

Age	Total	Male	Female
Total	8,496,323	4,237,127	4,259,196
0-4	493,240	252,353	240,887
5-9	504,349	257,982	246,367
10-14	509,809	260,836	248,973
15-19	504,960	258,277	246,683
20-24	518,660	264,553	254,107
25-29	533,826	272,205	261,621
30-34	533,602	271,101	262,501
35-39	547,563	278,088	269,475
40-44	564,081	288,714	275,367
45-49	529,649	269,961	259,688
50-54	514,000	259,798	254,202
55-59	450,355	224,820	225,535
60-64	460,925	228,847	232,078
65-69	435,482	212,588	222,894
70-74	442,864	211,905	230,959
75-79	389,441	181,098	208,343
80-84	289,271	130,215	159,056
85+	274,246	113,786	160,460

Percent of Total Population

Age	Total	Male	Female
Total	100.0000	49.8701	50.1299
0-4	5.8053	2.9701	2.8352
5-9	5.9361	3.0364	2.8997
10-14	6.0003	3.0700	2.9304
15-19	5.9433	3.0399	2.9034
20-24	6.1045	3.1137	2.9908
25-29	6.2830	3.2038	3.0792
30-34	6.2804	3.1908	3.0896
35-39	6.4447	3.2730	3.1717
40-44	6.6391	3.3981	3.2410
45-49	6.2339	3.1774	3.0565
50-54	6.0497	3.0578	2.9919
55-59	5.3006	2.6461	2.6545
60-64	5.4250	2.6935	2.7315
65-69	5.1255	2.5021	2.6234
70-74	5.2124	2.4941	2.7183
75-79	4.5836	2.1315	2.4522
80-84	3.4047	1.5326	1.8721
85+	3.2278	1.3392	1.8886

Components of Change

	Total	Male	Female
Births	98,624	50,495	48,129
Deaths	75,658	39,337	36,321
Natural Increase	22,966	11,158	11,808
Net Migration	48,700	24,588	24,112
Total Change	71,666	35,746	35,920

Components as % of Previous Year's Total Population

	Total	Male	Female
Births	1.1707	0.5994	0.5713
Deaths	0.8981	0.4669	0.4311
Natural Increase	0.2726	0.1324	0.1402
Net Migration	0.5781	0.2919	0.2862
Total Change	0.8507	0.4243	0.4264

Single Year of Age

Age	Total	Male	Female	Age	Total	Male	Female	Age	Total	Male	Female
0-24	2,531,018	1,294,001	1,237,017	12	102,036	52,212	49,824	60-65	547,555	271,476	276,079
0	98,155	50,233	47,922	13	102,061	52,224	49,837	60	86,491	42,752	43,739
1	97,852	50,064	47,788	14	101,925	52,150	49,775	61	90,357	44,906	45,451
2	98,344	50,311	48,033	15	101,651	52,007	49,644	62	96,696	48,122	48,574
3	99,192	50,744	48,448	16	101,416	51,882	49,534	63	97,152	48,332	48,820
4	99,697	51,001	48,696	17	100,379	51,338	49,041	64	90,229	44,735	45,494
5	100,107	51,208	48,899	18	100,881	51,584	49,297	65	86,630	42,629	44,001
6	100,466	51,392	49,074	19	100,633	51,466	49,167				
7	100,875	51,599	49,276	20	102,210	52,285	49,925				
8	101,297	51,814	49,483	21	103,142	52,728	50,414				
9	101,604	51,969	49,635	22	102,815	52,509	50,306				
10	101,844	52,092	49,752	23	104,508	53,276	51,232				
11	101,943	52,158	49,785	24	105,985	53,755	52,230				

Median Age

Total	Male	Female
40.9	40.1	41.8

Notes:

- 1) Unrounded data should not be considered accurate to the last digit.
- 2) Single year of age data are provided to develop a variety of age groupings. Individual age numbers should not be considered reliable.
- 3) Totals may not add due to rounding.

**Population by Age and Sex
Population Forecast for April 1, 2034
State of Washington**

Five Year Age Groups

Age	Total	Male	Female
Total	8,566,720	4,272,332	4,294,388
0-4	495,603	253,565	242,038
5-9	506,642	259,159	247,483
10-14	512,693	262,318	250,375
15-19	509,796	260,751	249,045
20-24	519,594	265,301	254,293
25-29	540,937	275,603	265,334
30-34	535,077	271,524	263,553
35-39	546,339	277,751	268,588
40-44	569,254	290,628	278,626
45-49	533,759	272,418	261,341
50-54	523,701	265,045	258,656
55-59	459,320	229,643	229,677
60-64	454,203	225,213	228,990
65-69	432,556	211,858	220,698
70-74	442,713	212,037	230,676
75-79	393,637	183,756	209,881
80-84	298,883	134,117	164,766
85+	292,013	121,645	170,368

Percent of Total Population

Age	Total	Male	Female
Total	100.0000	49.8713	50.1287
0-4	5.7852	2.9599	2.8253
5-9	5.9141	3.0252	2.8889
10-14	5.9847	3.0621	2.9226
15-19	5.9509	3.0438	2.9071
20-24	6.0653	3.0969	2.9684
25-29	6.3144	3.2171	3.0973
30-34	6.2460	3.1695	3.0765
35-39	6.3775	3.2422	3.1352
40-44	6.6449	3.3925	3.2524
45-49	6.2306	3.1800	3.0507
50-54	6.1132	3.0939	3.0193
55-59	5.3617	2.6806	2.6810
60-64	5.3019	2.6289	2.6730
65-69	5.0493	2.4730	2.5762
70-74	5.1678	2.4751	2.6927
75-79	4.5950	2.1450	2.4500
80-84	3.4889	1.5656	1.9233
85+	3.4087	1.4200	1.9887

Components of Change

	Total	Male	Female
Births	99,212	50,796	48,416
Deaths	77,515	40,182	37,333
Natural Increase	21,697	10,614	11,083
Net Migration	48,700	24,591	24,109
Total Change	70,397	35,205	35,192

Components as % of Previous Year's Total Population

	Total	Male	Female
Births	1.1677	0.5979	0.5698
Deaths	0.9123	0.4729	0.4394
Natural Increase	0.2554	0.1249	0.1304
Net Migration	0.5732	0.2894	0.2838
Total Change	0.8286	0.4144	0.4142

Single Year of Age

Age	Total	Male	Female	Age	Total	Male	Female	Age	Total	Male	Female
0-24	2,544,328	1,301,094	1,243,234	12	102,559	52,481	50,078	60-65	543,981	269,634	274,347
0	98,746	50,536	48,210	13	102,619	52,510	50,109	60	84,975	42,180	42,795
1	98,427	50,358	48,069	14	102,636	52,518	50,118	61	86,197	42,532	43,665
2	98,861	50,577	48,284	15	102,486	52,435	50,051	62	90,018	44,654	45,364
3	99,374	50,838	48,536	16	102,250	52,310	49,940	63	96,300	47,831	48,469
4	100,195	51,256	48,939	17	102,039	52,183	49,856	64	96,713	48,016	48,697
5	100,618	51,471	49,147	18	101,096	51,698	49,398	65	89,778	44,421	45,357
6	100,958	51,643	49,315	19	101,925	52,125	49,800				
7	101,289	51,812	49,477	20	101,723	52,034	49,689				
8	101,686	52,013	49,673	21	103,490	52,910	50,580				
9	102,091	52,220	49,871	22	104,429	53,334	51,095				
10	102,390	52,370	50,020	23	104,107	53,115	50,992				
11	102,489	52,439	50,050	24	105,845	53,908	51,937				

Median Age

Total	Male	Female
41.0	40.2	41.9

Notes:

- 1) Unrounded data should not be considered accurate to the last digit.
- 2) Single year of age data are provided to develop a variety of age groupings. Individual age numbers should not be considered reliable.
- 3) Totals may not add due to rounding.

**Population by Age and Sex
Population Forecast for April 1, 2035
State of Washington**

Five Year Age Groups

Age	Total	Male	Female
Total	8,636,067	4,307,071	4,328,996
0-4	498,049	254,820	243,229
5-9	508,941	260,337	248,604
10-14	515,350	263,681	251,669
15-19	514,059	262,937	251,122
20-24	521,947	266,548	255,399
25-29	546,175	278,087	268,088
30-34	537,137	272,579	264,558
35-39	547,721	278,541	269,180
40-44	568,897	289,585	279,312
45-49	539,441	276,012	263,429
50-54	527,438	266,884	260,554
55-59	471,715	236,295	235,420
60-64	446,127	221,064	225,063
65-69	437,341	214,772	222,569
70-74	438,597	210,359	228,238
75-79	397,863	186,371	211,492
80-84	309,107	138,738	170,369
85+	310,162	129,461	180,701

Percent of Total Population

Age	Total	Male	Female
Total	100.0000	49.8731	50.1269
0-4	5.7671	2.9506	2.8164
5-9	5.8932	3.0145	2.8787
10-14	5.9674	3.0533	2.9142
15-19	5.9525	3.0446	2.9078
20-24	6.0438	3.0865	2.9574
25-29	6.3243	3.2201	3.1043
30-34	6.2197	3.1563	3.0634
35-39	6.3423	3.2253	3.1169
40-44	6.5875	3.3532	3.2343
45-49	6.2464	3.1960	3.0503
50-54	6.1074	3.0903	3.0170
55-59	5.4622	2.7361	2.7260
60-64	5.1659	2.5598	2.6061
65-69	5.0641	2.4869	2.5772
70-74	5.0787	2.4358	2.6428
75-79	4.6070	2.1581	2.4489
80-84	3.5793	1.6065	1.9728
85+	3.5915	1.4991	2.0924

Components of Change

	Total	Male	Female
Births	99,795	51,095	48,700
Deaths	79,148	40,942	38,206
Natural Increase	20,647	10,153	10,494
Net Migration	48,700	24,586	24,114
Total Change	69,347	34,739	34,608

Components as % of Previous Year's Total Population

	Total	Male	Female
Births	1.1649	0.5964	0.5685
Deaths	0.9239	0.4779	0.4460
Natural Increase	0.2410	0.1185	0.1225
Net Migration	0.5685	0.2870	0.2815
Total Change	0.8095	0.4055	0.4040

Single Year of Age

Age	Total	Male	Female	Age	Total	Male	Female	Age	Total	Male	Female
0-24	2,558,346	1,308,323	1,250,023	12	103,105	52,762	50,343	60-65	542,364	268,748	273,616
0	99,331	50,836	48,495	13	103,142	52,779	50,363	60	90,030	44,890	45,140
1	99,019	50,662	48,357	14	103,193	52,803	50,390	61	84,690	41,966	42,724
2	99,436	50,871	48,565	15	103,198	52,803	50,395	62	85,880	42,297	43,583
3	99,890	51,103	48,787	16	103,086	52,738	50,348	63	89,656	44,388	45,268
4	100,373	51,348	49,025	17	102,875	52,612	50,263	64	95,871	47,523	48,348
5	101,114	51,725	49,389	18	102,764	52,547	50,217	65	96,237	47,684	48,553
6	101,470	51,907	49,563	19	102,136	52,237	49,899				
7	101,779	52,062	49,717	20	103,023	52,697	50,326				
8	102,099	52,225	49,874	21	102,988	52,651	50,337				
9	102,479	52,418	50,061	22	104,772	53,514	51,258				
10	102,877	52,621	50,256	23	105,734	53,946	51,788				
11	103,033	52,716	50,317	24	105,430	53,740	51,690				

Median Age

Total	Male	Female
41.2	40.3	42.0

Notes:

- 1) Unrounded data should not be considered accurate to the last digit.
- 2) Single year of age data are provided to develop a variety of age groupings. Individual age numbers should not be considered reliable.
- 3) Totals may not add due to rounding.

**Population by Age and Sex
Population Forecast for April 1, 2036
State of Washington**

Five Year Age Groups

Age	Total	Male	Female
Total	8,704,444	4,341,411	4,363,033
0-4	500,916	256,290	244,626
5-9	511,022	261,406	249,616
10-14	517,834	264,955	252,879
15-19	518,682	265,305	253,377
20-24	524,933	268,080	256,853
25-29	550,045	279,870	270,175
30-34	540,340	274,282	266,058
35-39	550,111	279,816	270,295
40-44	565,901	288,152	277,749
45-49	546,933	279,540	267,393
50-54	530,986	269,175	261,811
55-59	485,508	243,238	242,270
60-64	437,378	216,563	220,815
65-69	447,051	219,865	227,186
70-74	429,191	206,472	222,719
75-79	401,673	188,388	213,285
80-84	318,543	143,311	175,232
85+	327,397	136,703	190,694

Percent of Total Population

Age	Total	Male	Female
Total	100.0000	49.8758	50.1242
0-4	5.7547	2.9444	2.8104
5-9	5.8708	3.0031	2.8677
10-14	5.9491	3.0439	2.9052
15-19	5.9588	3.0479	2.9109
20-24	6.0306	3.0798	2.9508
25-29	6.3191	3.2153	3.1039
30-34	6.2076	3.1511	3.0566
35-39	6.3199	3.2146	3.1053
40-44	6.5013	3.3104	3.1909
45-49	6.2834	3.2115	3.0719
50-54	6.1002	3.0924	3.0078
55-59	5.5777	2.7944	2.7833
60-64	5.0248	2.4880	2.5368
65-69	5.1359	2.5259	2.6100
70-74	4.9307	2.3720	2.5587
75-79	4.6146	2.1643	2.4503
80-84	3.6595	1.6464	2.0131
85+	3.7613	1.5705	2.1908

Components of Change

	Total	Male	Female
Births	100,392	51,400	48,992
Deaths	80,715	41,651	39,064
Natural Increase	19,677	9,749	9,928
Net Migration	48,700	24,591	24,109
Total Change	68,377	34,340	34,037

Components as % of Previous Year's Total Population

	Total	Male	Female
Births	1.1625	0.5952	0.5673
Deaths	0.9346	0.4823	0.4523
Natural Increase	0.2278	0.1129	0.1150
Net Migration	0.5639	0.2847	0.2792
Total Change	0.7918	0.3976	0.3941

Single Year of Age

Age	Total	Male	Female	Age	Total	Male	Female	Age	Total	Male	Female
0-24	2,573,387	1,316,036	1,257,351	12	103,649	53,039	50,610	60-65	532,785	263,762	269,023
0	99,929	51,142	48,787	13	103,687	53,059	50,628	60	88,459	44,005	44,454
1	99,606	50,963	48,643	14	103,715	53,072	50,643	61	89,733	44,666	45,067
2	100,028	51,175	48,853	15	103,754	53,088	50,666	62	84,383	41,738	42,645
3	100,465	51,397	49,068	16	103,799	53,107	50,692	63	85,540	42,048	43,492
4	100,888	51,613	49,275	17	103,713	53,042	50,671	64	89,263	44,106	45,157
5	101,288	51,815	49,473	18	103,601	52,976	50,625	65	95,407	47,199	48,208
6	101,964	52,160	49,804	19	103,815	53,092	50,723				
7	102,291	52,326	49,965	20	103,231	52,808	50,423				
8	102,588	52,475	50,113	21	104,297	53,319	50,978				
9	102,891	52,630	50,261	22	104,259	53,249	51,010				
10	103,263	52,818	50,445	23	106,074	54,125	51,949				
11	103,520	52,967	50,553	24	107,072	54,579	52,493				

Median Age

Total	Male	Female
41.3	40.4	42.2

Notes:

- 1) Unrounded data should not be considered accurate to the last digit.
- 2) Single year of age data are provided to develop a variety of age groupings. Individual age numbers should not be considered reliable.
- 3) Totals may not add due to rounding.

**Population by Age and Sex
Population Forecast for April 1, 2037
State of Washington**

Five Year Age Groups

Age	Total	Male	Female
Total	8,772,012	4,375,439	4,396,573
0-4	503,914	257,827	246,087
5-9	513,198	262,524	250,674
10-14	520,201	266,169	254,032
15-19	522,152	267,088	255,064
20-24	527,950	269,627	258,323
25-29	551,308	280,303	271,005
30-34	550,128	279,506	270,622
35-39	549,971	279,739	270,232
40-44	561,247	285,383	275,864
45-49	558,459	285,234	273,225
50-54	530,544	269,448	261,096
55-59	499,028	250,368	248,660
60-64	437,363	216,531	220,832
65-69	451,009	222,029	228,980
70-74	420,665	202,620	218,045
75-79	403,071	189,357	213,714
80-84	326,593	147,362	179,231
85+	345,211	144,324	200,887

Percent of Total Population

Age	Total	Male	Female
Total	100.0000	49.8795	50.1205
0-4	5.7446	2.9392	2.8054
5-9	5.8504	2.9927	2.8577
10-14	5.9302	3.0343	2.8959
15-19	5.9525	3.0448	2.9077
20-24	6.0186	3.0737	2.9449
25-29	6.2849	3.1954	3.0894
30-34	6.2714	3.1863	3.0851
35-39	6.2696	3.1890	3.0806
40-44	6.3982	3.2533	3.1448
45-49	6.3664	3.2516	3.1147
50-54	6.0481	3.0717	2.9765
55-59	5.6889	2.8542	2.8347
60-64	4.9859	2.4684	2.5175
65-69	5.1415	2.5311	2.6103
70-74	4.7955	2.3098	2.4857
75-79	4.5950	2.1586	2.4363
80-84	3.7231	1.6799	2.0432
85+	3.9354	1.6453	2.2901

Components of Change

	Total	Male	Female
Births	101,032	51,728	49,304
Deaths	82,164	42,296	39,868
Natural Increase	18,868	9,432	9,436
Net Migration	48,700	24,596	24,104
Total Change	67,568	34,028	33,540

Components as % of Previous Year's Total Population

	Total	Male	Female
Births	1.1607	0.5943	0.5664
Deaths	0.9439	0.4859	0.4580
Natural Increase	0.2168	0.1084	0.1084
Net Migration	0.5595	0.2826	0.2769
Total Change	0.7762	0.3909	0.3853

Single Year of Age

Age	Total	Male	Female	Age	Total	Male	Female	Age	Total	Male	Female
0-24	2,587,415	1,323,235	1,264,180	12	104,134	53,289	50,845	60-65	526,201	260,341	265,860
0	100,572	51,472	49,100	13	104,230	53,336	50,894	60	90,557	45,037	45,520
1	100,207	51,271	48,936	14	104,260	53,352	50,908	61	88,171	43,788	44,383
2	100,615	51,476	49,139	15	104,276	53,357	50,919	62	89,411	44,426	44,985
3	101,057	51,701	49,356	16	104,354	53,391	50,963	63	84,053	41,496	42,557
4	101,463	51,907	49,556	17	104,427	53,411	51,016	64	85,171	41,784	43,387
5	101,803	52,080	49,723	18	104,441	53,407	51,034	65	88,838	43,810	45,028
6	102,134	52,248	49,886	19	104,654	53,522	51,132				
7	102,783	52,578	50,205	20	104,921	53,669	51,252				
8	103,099	52,738	50,361	21	104,500	53,428	51,072				
9	103,379	52,880	50,499	22	105,575	53,921	51,654				
10	103,673	53,029	50,644	23	105,546	53,853	51,693				
11	103,904	53,163	50,741	24	107,408	54,756	52,652				

Median Age

Total	Male	Female
41.3	40.4	42.3

Notes:

- 1) Unrounded data should not be considered accurate to the last digit.
- 2) Single year of age data are provided to develop a variety of age groupings. Individual age numbers should not be considered reliable.
- 3) Totals may not add due to rounding.

**Population by Age and Sex
Population Forecast for April 1, 2038
State of Washington**

Five Year Age Groups

Age	Total	Male	Female
Total	8,838,857	4,409,189	4,429,668
0-4	507,021	259,421	247,600
5-9	515,456	263,684	251,772
10-14	522,509	267,352	255,157
15-19	525,328	268,722	256,606
20-24	531,477	271,431	260,046
25-29	551,443	280,232	271,211
30-34	560,765	285,517	275,248
35-39	549,898	279,204	270,694
40-44	556,756	282,510	274,246
45-49	569,045	290,850	278,195
50-54	530,611	269,723	260,888
55-59	510,968	257,024	253,944
60-64	443,843	219,828	224,015
65-69	449,061	220,845	228,216
70-74	413,425	199,579	213,846
75-79	403,838	189,944	213,894
80-84	332,585	150,565	182,020
85+	364,828	152,758	212,070

Percent of Total Population

Age	Total	Male	Female
Total	100.0000	49.8842	50.1158
0-4	5.7363	2.9350	2.8013
5-9	5.8317	2.9832	2.8485
10-14	5.9115	3.0247	2.8868
15-19	5.9434	3.0402	2.9032
20-24	6.0130	3.0709	2.9421
25-29	6.2388	3.1705	3.0684
30-34	6.3443	3.2302	3.1141
35-39	6.2214	3.1588	3.0625
40-44	6.2990	3.1962	3.1027
45-49	6.4380	3.2906	3.1474
50-54	6.0032	3.0516	2.9516
55-59	5.7809	2.9079	2.8730
60-64	5.0215	2.4871	2.5344
65-69	5.0805	2.4986	2.5820
70-74	4.6774	2.2580	2.4194
75-79	4.5689	2.1490	2.4199
80-84	3.7628	1.7034	2.0593
85+	4.1275	1.7283	2.3993

Components of Change

	Total	Male	Female
Births	101,713	52,077	49,636
Deaths	83,568	42,928	40,640
Natural Increase	18,145	9,149	8,996
Net Migration	48,700	24,601	24,099
Total Change	66,845	33,750	33,095

Components as % of Previous Year's Total Population

	Total	Male	Female
Births	1.1595	0.5937	0.5658
Deaths	0.9527	0.4894	0.4633
Natural Increase	0.2069	0.1043	0.1026
Net Migration	0.5552	0.2804	0.2747
Total Change	0.7620	0.3847	0.3773

Single Year of Age

Age	Total	Male	Female	Age	Total	Male	Female	Age	Total	Male	Female
0-24	2,601,791	1,330,610	1,271,181	12	104,518	53,485	51,033	60-65	528,615	261,335	267,280
0	101,255	51,822	49,433	13	104,715	53,586	51,129	60	92,954	46,041	46,913
1	100,852	51,602	49,250	14	104,803	53,629	51,174	61	90,267	44,819	45,448
2	101,216	51,784	49,432	15	104,820	53,636	51,184	62	87,860	43,556	44,304
3	101,643	52,002	49,641	16	104,875	53,660	51,215	63	89,066	44,172	44,894
4	102,055	52,211	49,844	17	104,981	53,695	51,286	64	83,696	41,240	42,456
5	102,378	52,374	50,004	18	105,155	53,776	51,379	65	84,772	41,507	43,265
6	102,649	52,513	50,136	19	105,497	53,955	51,542				
7	102,950	52,665	50,285	20	105,762	54,100	51,662				
8	103,590	52,990	50,600	21	106,203	54,295	51,908				
9	103,889	53,142	50,747	22	105,775	54,029	51,746				
10	104,160	53,279	50,881	23	106,872	54,530	52,342				
11	104,313	53,373	50,940	24	106,865	54,477	52,388				

Median Age

Total	Male	Female
41.4	40.5	42.3

Notes:

- 1) Unrounded data should not be considered accurate to the last digit.
- 2) Single year of age data are provided to develop a variety of age groupings. Individual age numbers should not be considered reliable.
- 3) Totals may not add due to rounding.

Population by Age and Sex
Population Forecast for April 1, 2039
State of Washington

Five Year Age Groups				Percent of Total Population			
Age	Total	Male	Female	Age	Total	Male	Female
Total	8,904,977	4,442,657	4,462,320	Total	100.0000	49.8896	50.1104
0-4	510,210	261,057	249,153	0-4	5.7295	2.9316	2.7979
5-9	517,790	264,882	252,908	5-9	5.8146	2.9745	2.8401
10-14	524,777	268,516	256,261	10-14	5.8931	3.0153	2.8777
15-19	528,203	270,199	258,004	15-19	5.9315	3.0342	2.8973
20-24	536,411	273,957	262,454	20-24	6.0237	3.0764	2.9473
25-29	552,240	280,932	271,308	25-29	6.2015	3.1548	3.0467
30-34	568,058	288,989	279,069	30-34	6.3791	3.2453	3.1339
35-39	551,342	279,607	271,735	35-39	6.1914	3.1399	3.0515
40-44	555,480	282,157	273,323	40-44	6.2379	3.1685	3.0693
45-49	574,234	292,765	281,469	45-49	6.4485	3.2877	3.1608
50-54	534,757	272,205	262,552	50-54	6.0051	3.0568	2.9484
55-59	520,655	262,252	258,403	55-59	5.8468	2.9450	2.9018
60-64	452,770	224,614	228,156	60-64	5.0845	2.5223	2.5621
65-69	442,608	217,412	225,196	65-69	4.9703	2.4415	2.5289
70-74	410,991	199,105	211,886	70-74	4.6153	2.2359	2.3794
75-79	404,037	190,267	213,770	75-79	4.5372	2.1366	2.4006
80-84	336,621	153,041	183,580	80-84	3.7801	1.7186	2.0615
85+	383,793	160,700	223,093	85+	4.3099	1.8046	2.5053

Components of Change			
	Total	Male	Female
Births	102,381	52,419	49,962
Deaths	84,961	43,550	41,411
Natural Increase	17,420	8,869	8,551
Net Migration	48,700	24,599	24,101
Total Change	66,120	33,468	32,652

Components as % of Previous Year's Total Population			
	Total	Male	Female
Births	1.1583	0.5931	0.5653
Deaths	0.9612	0.4927	0.4685
Natural Increase	0.1971	0.1003	0.0967
Net Migration	0.5510	0.2783	0.2727
Total Change	0.7481	0.3786	0.3694

Single Year of Age											
Age	Total	Male	Female	Age	Total	Male	Female	Age	Total	Male	Female
0-24	2,617,391	1,338,611	1,278,780	12	104,925	53,694	51,231	60-65	536,079	265,585	270,494
0	101,925	52,165	49,760	13	105,097	53,781	51,316	60	93,936	46,995	46,941
1	101,537	51,954	49,583	14	105,287	53,878	51,409	61	92,662	45,821	46,841
2	101,863	52,116	49,747	15	105,363	53,913	51,450	62	89,954	44,585	45,369
3	102,244	52,310	49,934	16	105,419	53,939	51,480	63	87,527	43,311	44,216
4	102,641	52,512	50,129	17	105,501	53,963	51,538	64	88,691	43,902	44,789
5	102,969	52,677	50,292	18	105,709	54,060	51,649	65	83,309	40,971	42,338
6	103,224	52,807	50,417	19	106,211	54,324	51,887				
7	103,464	52,929	50,535	20	106,608	54,534	52,074				
8	103,753	53,075	50,678	21	107,047	54,728	52,319				
9	104,380	53,394	50,986	22	107,490	54,901	52,589				
10	104,669	53,540	51,129	23	107,066	54,635	52,431				
11	104,799	53,623	51,176	24	108,200	55,159	53,041				

Median Age		
Total	Male	Female
41.5	40.6	42.4

Notes:

- 1) Unrounded data should not be considered accurate to the last digit.
- 2) Single year of age data are provided to develop a variety of age groupings. Individual age numbers should not be considered reliable.
- 3) Totals may not add due to rounding.

**Population by Age and Sex
Population Forecast for April 1, 2040
State of Washington**

Five Year Age Groups				Percent of Total Population			
Age	Total	Male	Female	Age	Total	Male	Female
Total	8,970,488	4,475,908	4,494,580	Total	100.0000	49.8959	50.1041
0-4	513,486	262,735	250,751	0-4	5.7242	2.9289	2.7953
5-9	520,214	266,126	254,088	5-9	5.7992	2.9667	2.8325
10-14	527,049	269,682	257,367	10-14	5.8754	3.0063	2.8690
15-19	530,846	271,556	259,290	15-19	5.9177	3.0272	2.8905
20-24	540,740	276,179	264,561	20-24	6.0280	3.0788	2.9492
25-29	554,547	282,164	272,383	25-29	6.1819	3.1455	3.0364
30-34	573,370	291,506	281,864	30-34	6.3917	3.2496	3.1421
35-39	553,406	280,669	272,737	35-39	6.1692	3.1288	3.0404
40-44	556,855	282,951	273,904	40-44	6.2076	3.1542	3.0534
45-49	573,855	291,709	282,146	45-49	6.3971	3.2519	3.1453
50-54	540,493	275,833	264,660	50-54	6.0252	3.0749	2.9503
55-59	524,446	264,128	260,318	55-59	5.8463	2.9444	2.9019
60-64	465,119	231,218	233,901	60-64	5.1850	2.5775	2.6075
65-69	434,939	213,534	221,405	65-69	4.8486	2.3804	2.4681
70-74	415,955	202,097	213,858	70-74	4.6369	2.2529	2.3840
75-79	400,674	189,004	211,670	75-79	4.4666	2.1070	2.3596
80-84	340,841	155,570	185,271	80-84	3.7996	1.7342	2.0653
85+	403,653	169,247	234,406	85+	4.4998	1.8867	2.6131

Components of Change			
	Total	Male	Female
Births	103,050	52,761	50,289
Deaths	86,239	44,113	42,126
Natural Increase	16,811	8,648	8,163
Net Migration	48,700	24,603	24,097
Total Change	65,511	33,251	32,260

Components as % of Previous Year's Total Population			
	Total	Male	Female
Births	1.1572	0.5925	0.5647
Deaths	0.9684	0.4954	0.4731
Natural Increase	0.1888	0.0971	0.0917
Net Migration	0.5469	0.2763	0.2706
Total Change	0.7357	0.3734	0.3623

Single Year of Age											
Age	Total	Male	Female	Age	Total	Male	Female	Age	Total	Male	Female
0-24	2,632,335	1,346,278	1,286,057	12	105,411	53,944	51,467	60-65	553,404	274,837	278,567
0	102,595	52,508	50,087	13	105,503	53,989	51,514	60	102,348	51,472	50,876
1	102,208	52,297	49,911	14	105,668	54,073	51,595	61	93,643	46,773	46,870
2	102,548	52,468	50,080	15	105,846	54,162	51,684	62	92,346	45,585	46,761
3	102,893	52,642	50,251	16	105,961	54,215	51,746	63	89,617	44,337	45,280
4	103,242	52,820	50,422	17	106,045	54,242	51,803	64	87,165	43,051	44,114
5	103,554	52,978	50,576	18	106,229	54,329	51,900	65	88,285	43,619	44,666
6	103,814	53,109	50,705	19	106,765	54,608	52,157				
7	104,039	53,223	50,816	20	107,323	54,904	52,419				
8	104,267	53,339	50,928	21	107,896	55,163	52,733				
9	104,540	53,477	51,063	22	108,337	55,336	53,001				
10	105,159	53,792	51,367	23	108,795	55,514	53,281				
11	105,308	53,884	51,424	24	108,389	55,262	53,127				

Median Age		
Total	Male	Female
41.5	40.7	42.4

Notes:

- 1) Unrounded data should not be considered accurate to the last digit.
- 2) Single year of age data are provided to develop a variety of age groupings. Individual age numbers should not be considered reliable.
- 3) Totals may not add due to rounding.

WASHINGTON STATE OFFICE OF FINANCIAL MANAGEMENT
INSURANCE BUILDING • PO BOX 43113
OLYMPIA, WA 98504-3113 • 360-902-0555 • FAX 360-664-2832