

**State of Washington**

# 2023 Population Trends

**Forecasting & Research Division**

Office of Financial Management

September 2023



To accommodate persons with disabilities, this document is available in alternative formats by calling the Office of Financial Management at 360-902-0401. TTY/TDD users should contact OFM via the Washington Relay Service at 711 or 1-800-833-6388.  
This publication and other current and historical demographic data are available electronically.

---

Visit our website at [www.ofm.wa.gov](http://www.ofm.wa.gov).

# Table of Contents

## **1 Part 1. State, County and City Populations**

- 1** Summary of population trends: overall
- 1** Figure 1: State population change and components of change
- 2** Figure 2: Driver's licenses surrendered to Washington
- 2** Figure 3: Births, deaths and natural increase
- 3** Figure 4: Change in housing units
- 3** Summary of population trends: counties and cities
- 4** Figure 5: Percentage change in population by region
- 6** Figure 6: Distribution of population change by county

## **7 Part 2. Data Tables**

- 7** Table 1: Population and components of population change
- 8** Table 2: Population and components of population change by county: April 1, 2010, to April 1, 2020
- 9** Table 3: Population and components of population change by county: April 1, 2020, to April 1, 2023
- 11** Table 4: Populations of cities, towns and counties: April 1, 2020, to April 1, 2023
- 18** Table 5: Federal corrections and OFM adjustments to Census 2010 Public Law 94-171 counts
- 20** Table 6: Rank of cities and towns by April 1, 2023, population size
- 26** Table 7: Alphabetical listing of cities and towns with April 1, 2021, population
- 29** Table 8: Housing units by structure type for cities, towns and counties: April 1, 2020, and April 1, 2023
- 37** Table 9: Annexations, incorporations and other municipal boundary changes approved by OFM
- 44** Table 10: Population age 65 years and over by county

## **45 Part 3. Supplemental Population Information**

- 45** Washington State statutes related to the population estimates program
- 45** Population estimates development
- 46** Small area estimates program
- 47** Small area demographic estimates
- 47** Population data products
- 48** Washington State Data Center and Business and Industry Data Center
- 49** Acknowledgments

This page intentionally left blank.

Part 1  
**State, county, and city populations**

This document provides demographic data for Washington state counties, cities and towns as of April 1, 2023. The Office of Financial Management developed the population determinations in this document and these numbers represent the state’s official population figures. We have prepared population figures for Washington’s counties, cities, and towns every year for more than five decades. Many state laws use these estimates as criteria for how to allocate funds, how to determine a place’s program eligibility, and determining county participation under the Growth Management Act.

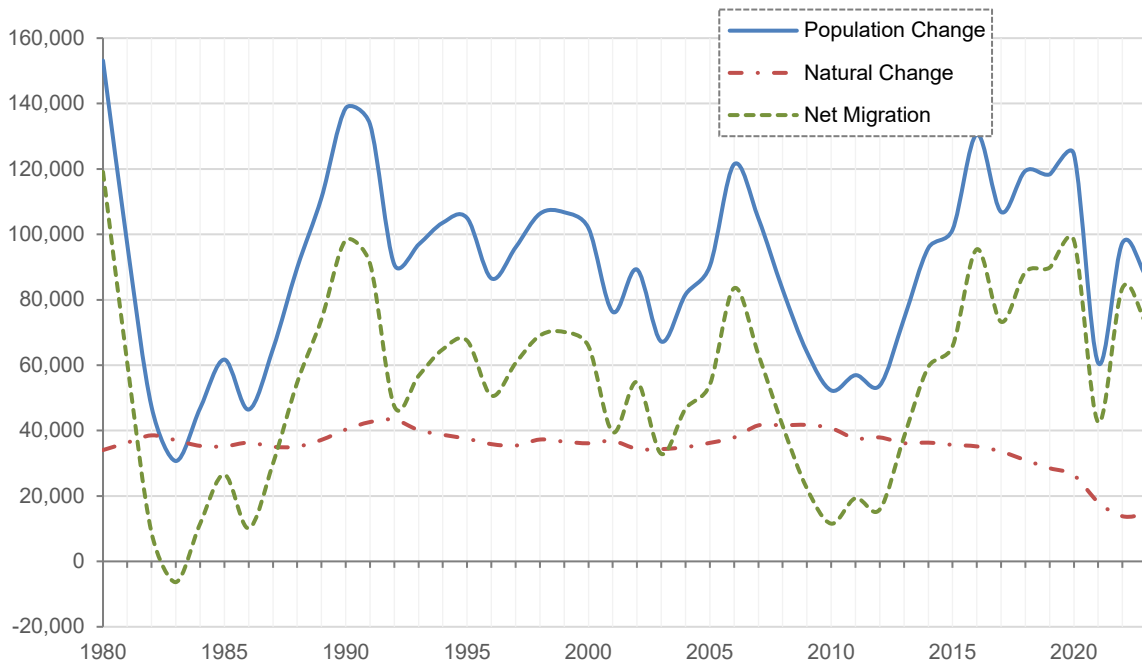
The state will use 2023 population estimates to administer state programs and help allocate state revenues beginning January 2024 (RCW 36.13.100, 43.62.020, 43.62.030, 66.08.200 and 66.08.210).

**Summary of population trends: Washington**

The April 1, 2023, population estimate is 7,951,150. Population increased by 244,840 people (from births, deaths, and net migration) from the 2020 census OFM-adjusted base. The crude population growth rate is 1.1%, dropping 0.2% from last year.

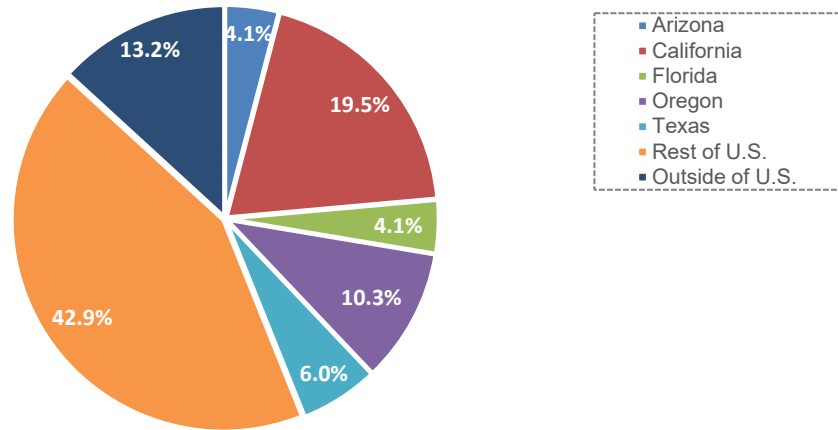
Migration continues to be the primary driver behind population growth. From 2022 to 2023, net migration (people moving in minus people moving out) to Washington totaled 72,300, which is down 11,300 people since 2022. Net migration accounted for 83% of the state’s population growth, with natural change (births minus deaths) responsible for the other 17%.

**Figure 1. State population change and components of change**



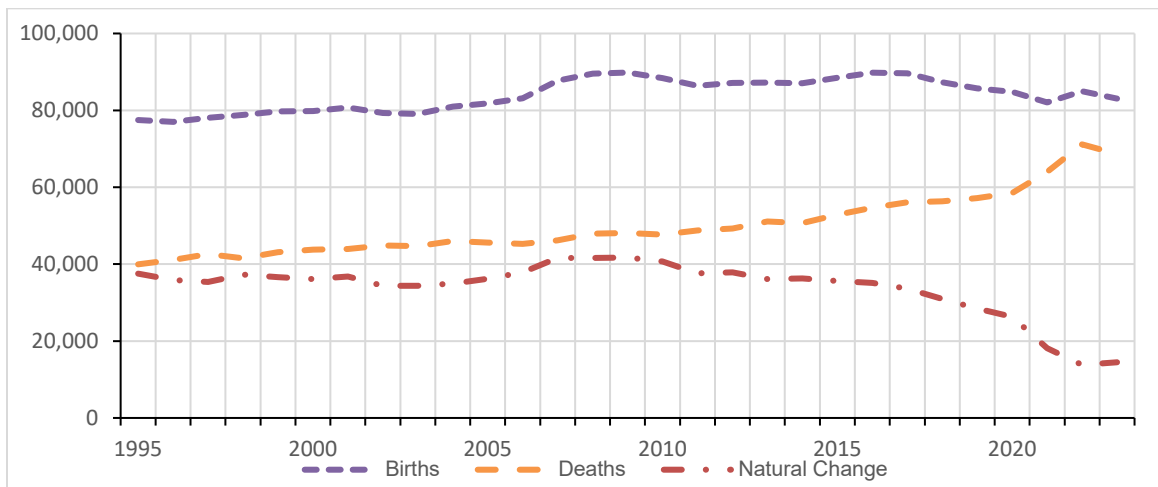
We used driver's license data for information about migration flows between Washington and other states. Approximately 44% of in-movers to Washington last year came from California, Oregon, Texas, Florida, and Arizona. The 12-month total of in-movers from these five states was 77,000. The remaining states accounted for 43% of in-migrants, with 13% arriving from other countries.

**Figure 2. Driver's licenses surrendered to Washington**



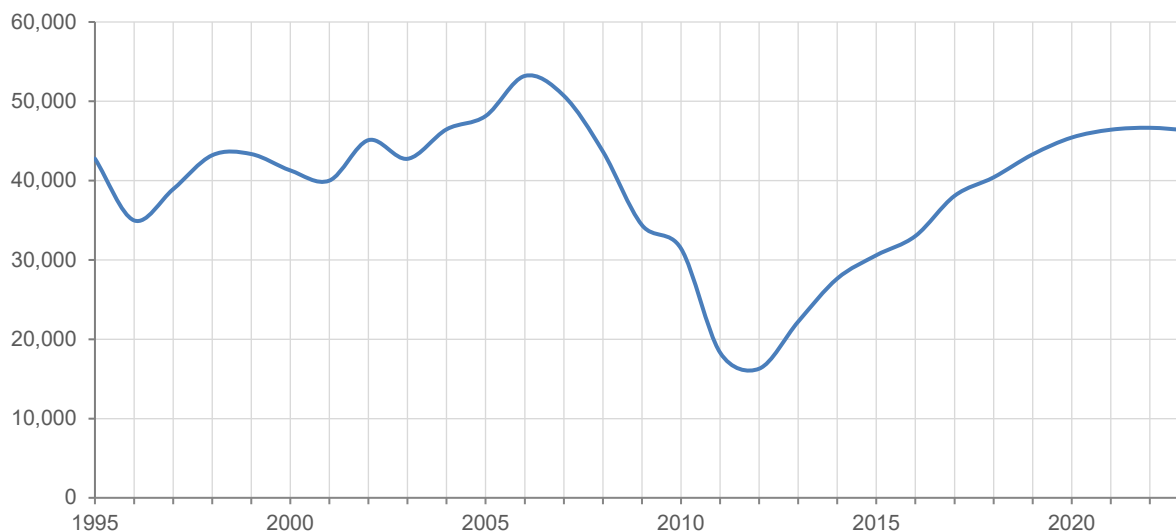
During the past year, 14,400 people were added to the state's population due to natural change, up 650 people from the previous year. Due to lower fertility rates, births have declined even though there are more women of childbearing age. Deaths have increased as the population ages. Natural change, as a share of state total population growth, is expected to gradually decline over time due to increasing mortality. Last year, our population gain due to natural change was 17% of the total population growth. This is compared to last decade's annual natural change average of 33,800 people, which was 34% of total population growth. This is one of the lowest percentages in the past 30 years.

**Figure 3. Births, deaths and natural change**



Housing, another indicator of population change, showed growth in 2023. Washington added 46,300 housing units, increasing the housing stock by 1.4%, when compared to 2022. This decade begins with an annual ‘housing change’ percentage that exceeded the previous decade average of 31,500 housing units. Statewide, 63% of all new housing units in 2023 were associated with multifamily structures.

**Figure 4. Yearly change in housing units**



### Summary of population trends: counties and cities

Population growth remains concentrated in the five largest metropolitan counties. For the 10th year in a row, at least 67% of state population growth occurred in the state’s five largest counties: Clark, King, Pierce, Snohomish and Spokane. King County accounted for the largest share of state growth this year, at 34.7%, followed by Snohomish at just over 14.4% and Pierce at 10.3%. The state’s 20 nonmetropolitan counties<sup>1</sup> accounted for 6.9% of population growth.

We can use different county classification schemes to examine population change in more detail. In 2023, Eastern Washington grew by 0.9% and Western Washington by 1.2%. Metropolitan counties grew 1.1% and nonmetropolitan counties grew at 0.8%. Rural counties<sup>2</sup>, grew by 0.7% versus 1.2% for nonrural counties. Distressed area counties<sup>3</sup> grew by 0.8% compared to 1.2% for the remaining counties.

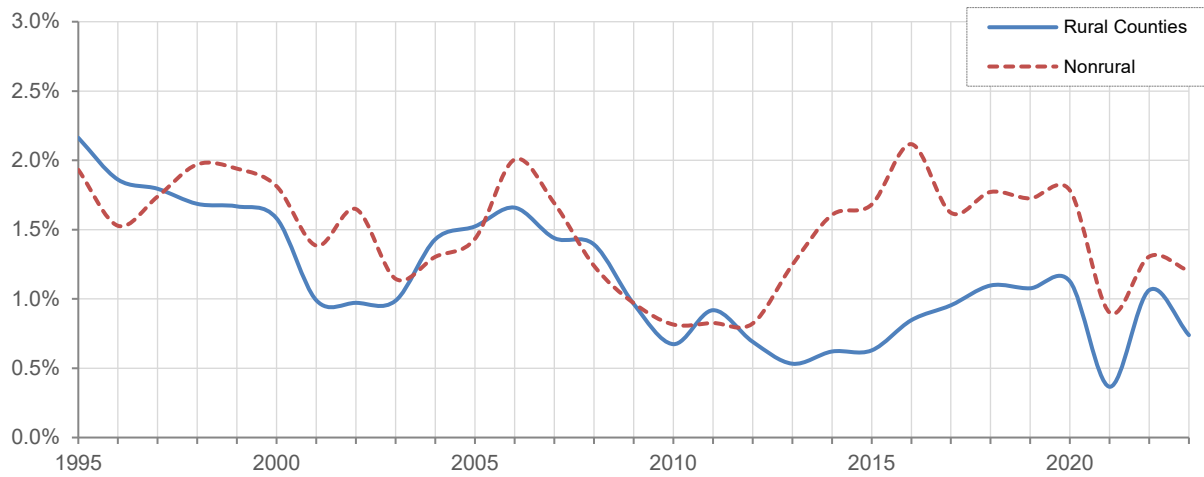
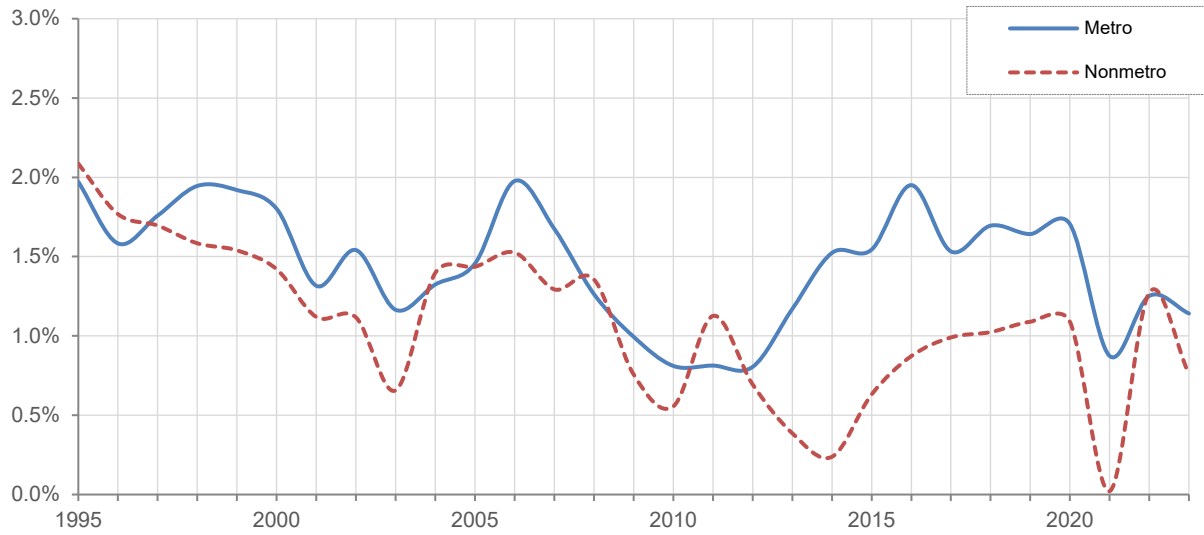
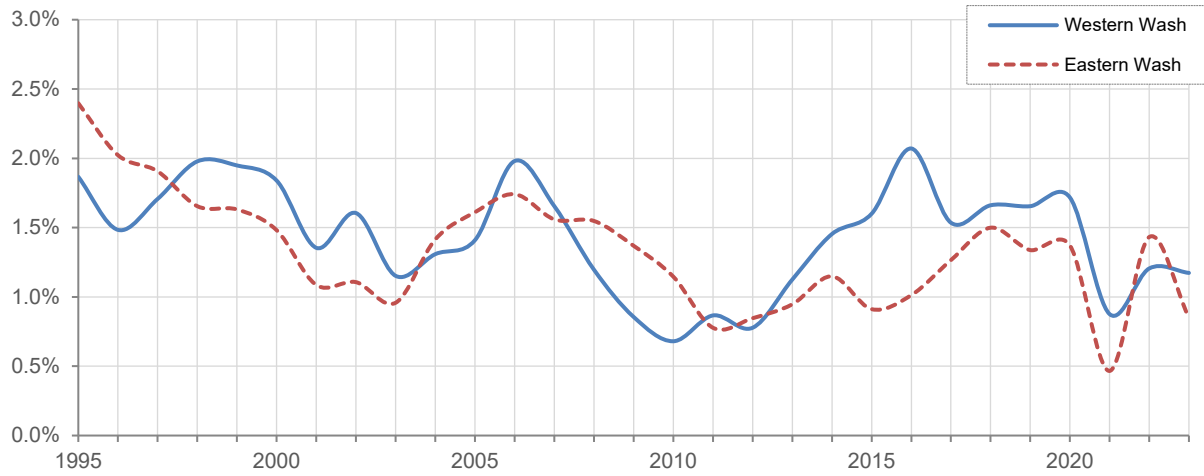
<sup>1</sup> Nonmetropolitan counties are the counties that are not metropolitan using the Office of Management and Budget’s definition. Please see the following map for the current metropolitan counties:

[https://www2.census.gov/geo/maps/metroarea/us\\_wall/Mar2020/CBSA\\_WallMap\\_Mar2020.pdf](https://www2.census.gov/geo/maps/metroarea/us_wall/Mar2020/CBSA_WallMap_Mar2020.pdf).

<sup>2</sup> We use the rural definition described in RCW 82.14.370 that is defined as follows: population density of less than one hundred persons per square mile or a county smaller than two hundred twenty-five square miles (meaning San Juan and Island counties). For counties meeting this rural definition please see: <https://ofm.wa.gov/washington-data-research/population-demographics/population-estimates/population-density/population-density-and-land-area-criteria-used-rural-area-assistance-and-other-programs>

<sup>3</sup> Distressed area counties can be found on Washington State’s Employment Security Department’s website at: <https://esd.wa.gov/labormarketinfo/distressed-areas>.

Figure 5. Percentage change in population by region







The population of incorporated places totaled 5,200,000 on April 1, 2023, an increase of 66,250 people since last year. Most of the population growth in incorporated areas was due to natural change and net migration rather than annexation (boundary changes). Only 1,600 of the total increase in incorporated area population was due to annexation.

The total unincorporated area population increased by 20,500 people over the previous year. The five most-populous unincorporated county areas (Pierce, Snohomish, King, Clark, and Kitsap, respectively) have almost as much population as the five largest cities in the state (Seattle, Spokane, Tacoma, Vancouver and Bellevue, respectively): 1.49 million versus 1.59 million.

## Part 2

## Data tables

Table 1. Population and components of population change

	April 1 Population	Population Change		Components of Change from Previous Period						
		Number	Percentage	Births		Deaths		Natural Increase	Net Migration	
				Number	Rate	Number	Rate		Number	Rate
<b>10-Year Intervals</b>										
1920	1,356.6	214.6	18.8	227.7	182.2	122.4	98.0	105.2	109.4	87.6
1930	1,563.4	206.8	15.2	248.2	170.0	151.1	103.5	97.1	109.7	75.1
1940	1,736.2	172.8	11.1	233.6	141.6	176.9	107.2	56.7	116.1	70.4
1950	2,379.0	642.8	37.0	452.5	219.9	211.6	102.8	240.9	401.9	195.3
1960	2,853.2	474.3	19.9	624.0	238.5	240.6	92.0	383.5	90.8	34.7
1970	3,413.3	560.0	19.6	589.3	188.1	282.4	90.1	306.8	253.2	80.8
1980	4,132.4	719.1	21.1	547.6	145.1	302.1	80.1	245.5	473.6	125.5
1990	4,866.7	734.3	17.8	705.1	156.7	339.9	75.6	365.2	369.2	82.0
2000	5,894.1	1,027.5	21.1	787.5	146.4	404.8	75.2	382.7	644.8	119.8
2010	6,724.5	830.4	14.1	840.6	133.2	460.4	73.0	380.3	450.1	71.3
2020	7,706.3	981.8	14.6	873.7	121.1	535.5	74.2	338.1	643.6	89.2
<b>Single Years</b>										
1980	4,132.35	153.15	3.85	65.37	16.12	31.33	7.72	34.04	119.11	29.37
1981	4,229.28	96.93	2.35	68.15	16.30	31.84	7.62	36.31	60.62	14.50
1982	4,276.55	47.27	1.12	70.27	16.52	31.74	7.46	38.53	8.74	2.05
1983	4,307.25	30.70	0.72	69.60	16.22	32.56	7.59	37.04	-6.35	-1.48
1984	4,354.07	46.82	1.09	68.58	15.84	33.26	7.68	35.32	11.51	2.66
1985	4,415.79	61.72	1.42	69.22	15.78	34.05	7.76	35.17	26.55	6.05
1986	4,462.21	46.43	1.05	70.32	15.84	34.01	7.66	36.31	10.11	2.28
1987	4,527.10	64.89	1.45	69.41	15.44	34.36	7.65	35.04	29.85	6.64
1988	4,616.89	89.79	1.98	71.11	15.55	36.00	7.87	35.10	54.68	11.96
1989	4,728.08	111.19	2.41	73.21	15.67	36.05	7.72	37.16	74.03	15.84
1990	4,866.66	138.59	2.93	76.66	15.98	36.33	7.57	40.32	98.26	20.48
1991	5,000.35	133.69	2.75	79.33	16.08	36.71	7.44	42.62	91.07	18.46
1992	5,091.14	90.79	1.82	80.57	15.97	37.24	7.38	43.33	47.45	9.40
1993	5,188.01	96.87	1.90	79.53	15.47	39.38	7.66	40.15	56.72	11.04
1994	5,291.58	103.57	2.00	78.33	14.95	39.61	7.56	38.71	64.85	12.38
1995	5,396.57	104.99	1.98	77.45	14.49	39.96	7.48	37.50	67.50	12.63
1996	5,483.10	86.53	1.60	77.01	14.16	41.15	7.56	35.86	50.68	9.32
1997	5,579.14	96.04	1.75	78.04	14.11	42.63	7.71	35.40	60.63	10.96
1998	5,685.46	106.32	1.91	78.83	14.00	41.56	7.38	37.26	69.06	12.26
1999	5,792.21	106.76	1.88	79.76	13.90	43.15	7.52	36.61	70.14	12.22
2000	5,894.14	101.93	1.76	79.85	13.67	43.74	7.49	36.11	65.82	11.26
2001	5,970.45	76.31	1.29	80.73	13.61	43.92	7.40	36.81	39.50	6.66
2002	6,059.70	89.25	1.49	79.29	13.18	44.90	7.46	34.39	54.86	9.12
2003	6,126.92	67.22	1.11	79.07	12.98	44.73	7.34	34.34	32.88	5.40
2004	6,208.53	81.62	1.33	80.96	13.13	46.03	7.46	34.93	46.68	7.57
2005	6,298.80	90.27	1.45	81.85	13.09	45.61	7.29	36.24	54.03	8.64
2006	6,420.22	121.42	1.93	83.17	13.08	45.28	7.12	37.89	83.53	13.14
2007	6,525.12	104.90	1.63	87.75	13.56	46.16	7.13	41.59	63.31	9.78
2008	6,608.23	83.11	1.27	89.57	13.64	47.95	7.30	41.62	41.49	6.32
2009	6,672.26	64.03	0.97	89.84	13.53	48.12	7.25	41.72	22.31	3.36
2010	6,724.54	52.28	0.78	88.41	13.15	47.67	7.09	40.74	11.54	1.72
2011	6,781.48	56.94	0.85	86.38	12.79	48.79	7.22	37.60	19.34	2.86
2012	6,835.25	53.77	0.79	87.13	12.8	49.23	7.23	37.90	15.87	2.33
2013	6,909.45	74.20	1.09	87.25	12.7	51.11	7.44	36.14	38.06	5.54
2014	7,005.21	95.76	1.39	87.03	12.51	50.71	7.29	36.32	59.45	8.54
2015	7,106.62	101.41	1.45	88.48	12.54	52.85	7.49	35.63	65.78	9.32
2016	7,237.22	130.60	1.84	89.82	12.52	54.66	7.62	35.16	95.44	13.31
2017	7,344.07	106.85	1.48	89.66	12.3	56.08	7.69	33.59	73.27	10.05
2018	7,463.48	119.41	1.63	87.35	11.8	56.37	7.61	30.97	88.43	11.94
2019	7,581.82	118.34	1.59	85.71	11.39	57.21	7.60	28.5	89.84	11.94
2020	7,706.31	124.49	1.64	84.84	11.1	58.52	7.66	26.32	98.17	12.84
2021	7,766.98	60.67	0.79	82.10	10.61	63.98	8.27	18.12	42.54	5.50
2022	7,864.40	97.43	1.25	84.97	10.87	71.16	9.10	13.81	83.62	10.70
2023	7,951.15	86.75	1.10	83.07	10.50	68.62	8.68	14.45	72.31	9.14

Notes: • Rates are calculated per 1,000 midpoint population based on unrounded numbers.  
• Totals may not add due to rounding.

**Table 2. Population and components of population change by county: April 1, 2010, to April 1, 2020**

	Census		Total Change: 2010 to 2020						Rank by Percentage Change
	2010	2020	Numeric Change	Percentage Change	Births	Deaths	Natural Increase	Net Migration	
Washington	6,724,540	7,706,310	981,770	14.60	873,652	535,518	338,134	643,636	--
Adams	18,728	20,613	1,885	10.07	3,918	1,194	2,724	-839	20
Asotin	21,623	22,285	662	3.06	2,335	2,471	-136	798	34
Benton	175,177	206,873	31,696	18.09	25,970	13,753	12,217	19,479	3
Chelan	72,453	79,141	6,688	9.23	9,122	6,841	2,281	4,407	22
Clallam	71,404	77,155	5,751	8.05	6,508	9,761	-3,253	9,004	26
Clark	425,363	503,311	77,948	18.33	54,977	33,264	21,713	56,235	2
Columbia	4,078	3,952	-126	-3.09	353	548	-195	69	38
Cowlitz	102,410	110,730	8,320	8.12	12,251	11,262	989	7,331	25
Douglas	38,431	42,938	4,507	11.73	5,190	3,046	2,144	2,363	13
Ferry	7,551	7,178	-373	-4.94	695	846	-151	-222	39
Franklin	78,163	96,749	18,586	23.78	16,205	3,806	12,399	6,187	1
Garfield	2,266	2,286	20	0.88	230	265	-35	55	37
Grant	89,120	99,123	10,003	11.22	15,073	6,800	8,273	1,730	15
Grays Harbor	72,797	75,636	2,839	3.90	7,651	8,303	-652	3,491	32
Island	78,506	86,857	8,351	10.64	9,074	7,169	1,905	6,446	18
Jefferson	29,872	32,977	3,105	10.39	1,887	3,640	-1,753	4,858	19
King	1,931,249	2,269,675	338,426	17.52	249,571	127,574	121,997	216,429	4
Kitsap	251,133	275,611	24,478	9.75	29,929	21,299	8,630	15,848	21
Kittitas	40,915	46,468	5,553	13.57	4,076	3,007	1,069	4,484	9
Klickitat	20,318	22,735	2,417	11.90	2,077	1,867	210	2,207	12
Lewis	75,455	82,149	6,694	8.87	8,969	8,706	263	6,431	23
Lincoln	10,570	10,876	306	2.89	989	1,141	-152	458	35
Mason	60,699	65,726	5,027	8.28	6,357	6,596	-239	5,266	24
Okanogan	41,120	42,104	984	2.39	5,105	4,324	781	203	36
Pacific	20,920	23,365	2,445	11.69	1,877	3,126	-1,249	3,694	14
Pend Oreille	13,001	13,401	400	3.08	1,172	1,521	-349	749	33
Pierce	795,225	920,393	125,168	15.74	113,183	63,540	49,643	75,525	7
San Juan	15,769	17,788	2,019	12.80	884	1,400	-516	2,535	10
Skagit	116,901	129,523	12,622	10.80	14,382	11,709	2,673	9,949	17
Skamania	11,066	11,604	538	4.86	971	869	102	436	31
Snohomish	713,335	827,957	114,622	16.07	95,297	51,525	43,772	70,850	6
Spokane	471,221	539,339	68,118	14.46	59,224	43,989	15,235	52,883	8
Stevens	43,531	46,445	2,914	6.69	4,319	4,456	-137	3,051	28
Thurston	252,264	294,793	42,529	16.86	30,940	21,483	9,457	33,072	5
Wahkiakum	3,978	4,422	444	11.16	273	498	-225	669	16
Walla Walla	58,781	62,584	3,803	6.47	6,530	5,672	858	2,945	29
Whatcom	201,140	226,847	25,707	12.78	22,268	16,123	6,145	19,562	11
Whitman	44,776	47,973	3,197	7.14	4,218	2,646	1,572	1,625	27
Yakima	243,231	256,728	13,497	5.55	39,602	19,478	20,124	-6,627	30

<b>Calculation:</b>	<b>1</b>	<b>2</b>	<b>3=2-1</b>	<b>4=3/1*100</b>	<b>5</b>	<b>6</b>	<b>7=5-6</b>	<b>8=3-7</b>
---------------------	----------	----------	--------------	------------------	----------	----------	--------------	--------------

Notes: • Rankings based on unrounded numbers.

**Table 3. Population and components of population change by county: April 1, 2020 to April 1, 2023**

	Census 2020	Estimate 2022	Estimate 2023	Total Change: 2020 to 2023						Rank by Percent Change
				Numeric Change	Percent Change	Births	Deaths	Natural Increase	Net Migration	
Washington	7,706,310	7,864,400	7,951,150	244,840	3.18	250,134	203,761	46,373	198,467	--
Adams	20,613	21,100	21,200	587	2.85	1,074	471	603	-16	14
Asotin	22,285	22,600	22,650	365	1.64	645	933	-288	653	32
Benton*	206,873	212,300	215,500	8,627	4.17	7,525	5,764	1,761	6,866	4
Chelan*	79,141	80,650	81,500	2,359	2.98	2,389	2,510	-121	2,480	11
Clallam*	77,155	77,625	78,075	920	1.19	1,717	3,699	-1,982	2,902	35
Clark*	503,311	520,900	527,400	24,089	4.79	16,499	13,560	2,939	21,150	1
Columbia*	3,952	3,950	3,950	-2	-0.05	103	198	-95	93	39
Cowlitz	110,730	112,350	113,000	2,270	2.05	3,680	4,330	-650	2,920	23
Douglas*	42,938	44,000	44,500	1,562	3.64	1,508	1,126	382	1,180	7
Ferry*	7,178	7,300	7,300	122	1.70	192	357	-165	287	31
Franklin*	96,749	99,750	101,100	4,351	4.50	4,371	1,676	2,695	1,656	2
Garfield*	2,286	2,300	2,300	14	0.61	76	99	-23	37	37
Grant*	99,123	101,800	103,300	4,177	4.21	4,147	2,650	1,497	2,680	3
Grays Harbor	75,636	76,400	77,000	1,364	1.80	2,068	3,312	-1,244	2,608	27
Island*	86,857	87,700	88,150	1,293	1.49	2,308	2,737	-429	1,722	33
Jefferson*	32,977	33,350	33,425	448	1.36	463	1,304	-841	1,289	34
King*	2,269,675	2,317,700	2,347,800	78,125	3.44	69,594	45,670	23,924	54,201	8
Kitsap*	275,611	280,900	283,200	7,589	2.75	8,516	7,736	780	6,809	17
Kittitas*	46,468	47,200	47,300	832	1.79	1,204	1,144	60	772	28
Klickitat	22,735	23,150	23,250	515	2.27	589	804	-215	730	21
Lewis*	82,149	83,400	84,075	1,926	2.34	2,767	3,342	-575	2,501	19
Lincoln	10,876	11,050	11,125	249	2.29	341	425	-84	333	20
Mason*	65,726	66,200	67,000	1,274	1.94	1,919	2,478	-559	1,833	25
Okanogan	42,104	42,700	43,000	896	2.13	1,339	1,637	-298	1,194	22
Pacific*	23,365	23,600	23,775	410	1.75	469	1,166	-697	1,107	29
Pend Oreille*	13,401	13,625	13,725	324	2.42	348	676	-328	652	18
Pierce*	920,393	937,400	946,300	25,907	2.81	33,084	24,475	8,609	17,298	16
San Juan*	17,788	18,150	18,350	562	3.16	310	452	-142	704	10
Skagit*	129,523	131,250	132,000	2,477	1.91	4,185	4,405	-220	2,697	26
Skamania	11,604	11,900	12,000	396	3.41	272	325	-53	449	9
Snohomish*	827,957	847,300	859,800	31,843	3.85	29,122	19,735	9,387	22,456	6
Spokane*	539,339	550,700	554,600	15,261	2.83	17,480	16,903	577	14,684	15
Stevens*	46,445	47,050	47,350	905	1.95	1,369	1,789	-420	1,325	24
Thurston*	294,793	300,500	303,400	8,607	2.92	9,202	8,684	518	8,089	12
Wahkiakum	4,422	4,525	4,550	128	2.89	91	193	-102	230	13
Walla Walla*	62,584	62,625	63,100	516	0.82	1,716	2,136	-420	936	36
Whatcom*	226,847	231,650	235,800	8,953	3.95	5,971	6,184	-213	9,166	5
Whitman	47,973	47,800	48,100	127	0.26	1,179	1,061	118	9	38
Yakima*	256,728	259,950	261,200	4,472	1.74	10,302	7,615	2,687	1,785	30

<b>Calculation:</b>	<b>1</b>	<b>2</b>	<b>3=2-1</b>	<b>4=3/1*100</b>	<b>5</b>	<b>6</b>	<b>7=5-6</b>	<b>8=3-7</b>
---------------------	----------	----------	--------------	------------------	----------	----------	--------------	--------------

Symbols: \* Counties currently planning under the Growth Management Act.

Notes: • Totals may not add due to rounding.

**Table 4. Populations of cities, towns, and counties: April 1, 2020 to April 1, 2023**

<u>County Municipality</u>	<u>Census 2020</u>	<u>Estimate 2021'</u>	<u>Estimate 2022</u>	<u>Estimate 2023</u>	<u>County Municipality</u>	<u>Census 2020</u>	<u>Estimate 2021'</u>	<u>Estimate 2022</u>	<u>Estimate 2023</u>
<b>Adams</b>	<b>20,613</b>	<b>20,900</b>	<b>21,100</b>	<b>21,200</b>	<b>Douglas</b>	<b>42,938</b>	<b>43,550</b>	<b>44,000</b>	<b>44,500</b>
Unincorporated	9,472	9,575	9,575	9,585	Unincorporated	23,700	24,290	24,590	24,890
Incorporated	11,141	11,325	11,525	11,615	Incorporated	19,238	19,260	19,410	19,610
Hatton	79	80	80	80	Bridgeport	2,141	2,110	2,135	2,155
Lind	535	535	535	535	Coulee Dam <i>part</i>	200	200	200	200
Othello	8,549	8,725	8,920	9,005	East Wenatchee	14,158	14,180	14,180	14,210
Ritzville	1,767	1,775	1,780	1,785	Mansfield	326	330	330	330
Washtucna	211	210	210	210	Rock Island	1,279	1,300	1,425	1,570
					Waterville	1,134	1,140	1,140	1,145
<b>Asotin</b>	<b>22,285</b>	<b>22,500</b>	<b>22,600</b>	<b>22,650</b>	<b>Ferry</b>	<b>7,178</b>	<b>7,250</b>	<b>7,300</b>	<b>7,300</b>
Unincorporated	13,920	14,070	14,165	14,205	Unincorporated	6,186	6,250	6,300	6,300
Incorporated	8,365	8,430	8,435	8,445	Incorporated	992	1,000	1,000	1,000
Asotin	1,204	1,215	1,220	1,225	Republic	992	1,000	1,000	1,000
Clarkston	7,161	7,215	7,215	7,220					
<b>Benton</b>	<b>206,873</b>	<b>209,400</b>	<b>212,300</b>	<b>215,500</b>	<b>Franklin</b>	<b>96,749</b>	<b>98,350</b>	<b>99,750</b>	<b>101,100</b>
Unincorporated	36,556	36,760	37,445	37,615	Unincorporated	13,668	13,990	14,195	14,325
Incorporated	170,317	172,640	174,855	177,885	Incorporated	83,081	84,360	85,555	86,775
Benton City	3,479	3,500	3,710	3,810	Connell	5,441	5,125	4,840	4,960
Kennewick	83,921	84,620	85,320	86,470	Kahlotus	147	145	145	145
Prosser	6,062	6,130	6,195	6,445	Mesa	385	390	390	390
Richland	60,560	61,320	62,220	63,320	Pasco	77,108	78,700	80,180	81,280
West Richland	16,295	17,070	17,410	17,840					
<b>Chelan</b>	<b>79,141</b>	<b>80,000</b>	<b>80,650</b>	<b>81,500</b>	<b>Garfield</b>	<b>2,286</b>	<b>2,300</b>	<b>2,300</b>	<b>2,300</b>
Unincorporated	32,507	33,140	33,460	33,875	Unincorporated	897	905	905	905
Incorporated	46,634	46,860	47,190	47,625	Incorporated	1,389	1,395	1,395	1,395
Cashmere	3,248	3,260	3,280	3,355	Pomeroy	1,389	1,395	1,395	1,395
Chelan	4,222	4,320	4,390	4,470					
Entiat	1,326	1,340	1,355	1,360	<b>Grant</b>	<b>99,123</b>	<b>100,800</b>	<b>101,800</b>	<b>103,300</b>
Leavenworth	2,263	2,390	2,515	2,590	Unincorporated	44,987	45,635	45,860	46,660
Wenatchee	35,575	35,550	35,650	35,850	Incorporated	54,136	55,165	55,940	56,640
					Coulee City	549	560	560	560
					Coulee Dam <i>part</i>	0	0	0	0
<b>Clallam</b>	<b>77,155</b>	<b>77,750</b>	<b>77,625</b>	<b>78,075</b>	Electric City	956	955	960	965
Unincorporated	45,836	46,170	45,850	46,090	Ephrata	8,477	8,575	8,620	8,690
Incorporated	31,319	31,580	31,775	31,985	George	809	815	820	885
Forks	3,335	3,335	3,360	3,395	Grand Coulee	972	970	965	960
Port Angeles	19,960	20,120	20,200	20,240	Hartline	180	180	180	180
Sequim	8,024	8,125	8,215	8,350	Krupp	49	50	50	45
					Mattawa	3,335	3,340	3,535	3,575
<b>Clark</b>	<b>503,311</b>	<b>513,100</b>	<b>520,900</b>	<b>527,400</b>	Moses Lake	25,146	25,760	26,040	26,210
Unincorporated	233,048	236,200	237,650	240,155	Quincy	7,543	7,720	7,830	8,065
Incorporated	270,263	276,900	283,250	287,245	Royal City	1,776	1,855	1,910	1,910
Battle Ground	20,743	21,160	21,780	21,910	Soap Lake	1,691	1,695	1,740	1,765
Camas	26,065	26,870	27,250	27,420	Warden	2,449	2,485	2,525	2,625
La Center	3,424	3,605	3,835	3,890	Wilson Creek	204	205	205	205
Ridgefield	10,325	11,910	13,640	15,180					
Vancouver	190,915	194,400	197,600	199,600	<b>Grays Harbor</b>	<b>75,636</b>	<b>76,050</b>	<b>76,400</b>	<b>77,000</b>
Washougal	17,039	17,200	17,390	17,490	Unincorporated	28,993	29,020	29,125	29,370
Woodland <i>part</i>	84	85	85	85	Incorporated	46,643	47,030	47,275	47,630
Yacolt	1,668	1,670	1,670	1,670	Aberdeen	17,013	17,050	17,040	17,080
					Cosmopolis	1,638	1,655	1,665	1,670
<b>Columbia</b>	<b>3,952</b>	<b>3,950</b>	<b>3,950</b>	<b>3,950</b>	Elma	3,438	3,450	3,460	3,480
Unincorporated	1,385	1,380	1,385	1,385	Hoquiam	8,776	8,785	8,785	8,795
Incorporated	2,567	2,570	2,565	2,565	McCleary	1,997	2,040	2,040	2,120
Dayton	2,448	2,450	2,445	2,445	Montesano	4,138	4,145	4,150	4,090
Starbuck	119	120	120	120	Oakville	715	710	720	720
					Ocean Shores	6,715	6,965	7,160	7,380
<b>Cowlitz</b>	<b>110,730</b>	<b>111,500</b>	<b>112,350</b>	<b>113,000</b>	Westport	2,213	2,230	2,255	2,295
Unincorporated	48,339	49,115	49,850	50,105					
Incorporated	62,391	62,385	62,500	62,895	<b>Island</b>	<b>86,857</b>	<b>87,100</b>	<b>87,700</b>	<b>88,150</b>
Castle Rock	2,446	2,445	2,445	2,460	Unincorporated	59,146	59,310	59,820	60,210
Kalama	2,960	3,010	3,065	3,070	Incorporated	27,711	27,790	27,880	27,940
Kelso	12,720	12,720	12,720	12,750	Coupeville	1,942	1,950	1,965	1,995
Longview	37,818	37,750	37,780	38,130	Langley	1,147	1,150	1,155	1,165
Woodland <i>part</i>	6,447	6,460	6,490	6,485	Oak Harbor	24,622	24,690	24,760	24,780

**Table 4. Populations of cities, towns, and counties: April 1, 2020 to April 1, 2023 (continued)**

<b>County Municipality</b>	<b>Census 2020</b>	<b>Estimate 2021'</b>	<b>Estimate 2022</b>	<b>Estimate 2023</b>	<b>County Municipality</b>	<b>Census 2020</b>	<b>Estimate 2021'</b>	<b>Estimate 2022</b>	<b>Estimate 2023</b>
<b>Jefferson</b>	<b>32,977</b>	<b>33,100</b>	<b>33,350</b>	<b>33,425</b>	<b>Klickitat continued</b>				
Unincorporated	22,829	22,880	23,060	23,095	Bingen	778	780	780	780
Incorporated	10,148	10,220	10,290	10,330	Goldendale	3,453	3,475	3,475	3,485
Port Townsend	10,148	10,220	10,290	10,330	White Salmon	2,485	2,490	2,490	2,500
<b>King</b>	<b>2,269,675</b>	<b>2,287,050</b>	<b>2,317,700</b>	<b>2,347,800</b>	<b>Lewis</b>	<b>82,149</b>	<b>82,700</b>	<b>83,400</b>	<b>84,075</b>
Unincorporated	246,266	247,385	248,160	249,060	Unincorporated	49,461	49,840	50,185	50,580
Incorporated	2,023,409	2,039,665	2,069,540	2,098,740	Incorporated	32,688	32,860	33,215	33,495
Algona	3,290	3,290	3,300	3,315	Centralia	18,183	18,280	18,360	18,400
Auburn part	77,243	78,040	78,690	78,760	Chehalis	7,439	7,350	7,365	7,400
Beaux Arts	317	315	315	315	Morton	1,036	1,055	1,070	1,080
Bellevue	151,854	152,600	153,900	154,600	Mossyrock	768	775	780	785
Black Diamond	4,697	5,320	6,145	6,880	Napavine	1,888	1,895	1,955	1,995
Bothell part	28,956	28,930	29,210	29,280	Pe Ell	642	640	650	655
Burien	52,066	52,430	52,490	52,560	Toledo	631	635	685 *	695
Carnation	2,158	2,150	2,160	2,225	Vader	629	645	655	650
Clyde Hill	3,126	3,110	3,110	3,115	Winlock	1,472	1,585	1,695	1,835
Covington	20,777	20,890	21,200	21,600					
Des Moines	32,888	33,100	33,160	33,260	<b>Lincoln</b>	<b>10,876</b>	<b>10,900</b>	<b>11,050</b>	<b>11,125</b>
Duvall	8,034	8,125	8,320	8,530	Unincorporated	5,290	5,320	5,440	5,490
Enumclaw	12,543	12,830	12,910	13,090	Incorporated	5,586	5,580	5,610	5,635
Federal Way	101,030	101,700	101,800	102,000	Almira	318	315	320	320
Hunts Point	457	455	460	460	Creston	213	215	215	220
Issaquah	40,051	40,640	40,950	41,290	Davenport	1,703	1,705	1,710	1,725
Kenmore	23,914	24,050	24,090	24,230	Harrington	429	425	430	435
Kent	136,588	137,700	137,900	139,100	Odessa	896	890	890	890
Kirkland	92,175	92,900	93,570	96,920	Reardan	637	640	650	650
Lake Forest Park	13,630	13,630	13,620	13,660	Sprague	495	495	500	500
Maple Valley	28,013	28,640	28,920	29,250	Wilbur	895	895	895	895
Medina	2,915	2,920	2,915	2,925					
Mercer Island	25,748	25,790	25,780	25,800	<b>Mason</b>	<b>65,726</b>	<b>65,750</b>	<b>66,200</b>	<b>67,000</b>
Milton part	1,640	1,630	1,630	1,635	Unincorporated	55,355	55,340	55,770	56,580
Newcastle	13,017	13,310	13,560	13,610	Incorporated	10,371	10,410	10,430	10,420
Normandy Park	6,771	6,785	6,790	6,840	Shelton	10,371	10,410	10,430	10,420
North Bend	7,461	7,685	7,915	8,120					
Pacific part	7,194	7,215	7,230	7,230	<b>Okanogan</b>	<b>42,104</b>	<b>42,350</b>	<b>42,700</b>	<b>43,000</b>
Redmond	73,256	73,910	75,270	77,490	Unincorporated	25,943	26,105	26,325	26,500
Renton	106,785	107,100	107,500	107,900	Incorporated	16,161	16,245	16,375	16,500
Sammamish	67,455	67,940	68,150	68,280	Brewster	1,983	1,995	1,990	1,995
SeaTac	31,454	32,000	31,910	31,740	Cononully	193	190	190	195
Seattle	737,015	742,400	762,500	779,200	Coulee Dam part	1,011	1,010	1,010	1,010
Shoreline	58,608	59,260	60,320	61,120	Elmer City	239	245	245	245
Skykomish	161	160	165	165	Nespelem	180	180	180	185
Snoqualmie	14,121	14,490	14,490	14,500	Okanogan	2,379	2,395	2,415	2,420
Tukwila	21,798	22,000	22,620	22,780	Omak	4,860	4,870	4,950	4,980
Woodinville	13,069	13,100	13,450	13,830	Oroville	1,795	1,800	1,805	1,810
Yarrow Point	1,134	1,125	1,125	1,135	Pateros	593	590	590	595
					Riverside	329	325	325	325
<b>Kitsap</b>	<b>275,611</b>	<b>277,700</b>	<b>280,900</b>	<b>283,200</b>	Tonasket	1,103	1,095	1,085	1,085
Unincorporated	179,719	180,840	182,040	183,500	Twisp	992	1,015	1,035	1,075
Incorporated	95,892	96,860	98,860	99,700	Winthrop	504	535	555	580
Bainbridge Island	24,825	24,930	25,060	25,180					
Bremerton	43,505	43,970	45,220	44,640	<b>Pacific</b>	<b>23,365</b>	<b>23,425</b>	<b>23,600</b>	<b>23,775</b>
Port Orchard	15,587	15,960	16,400	17,480	Unincorporated	15,763	15,815	15,960	16,070
Poulsbo	11,975	12,000	12,180	12,400	Incorporated	7,602	7,610	7,640	7,705
					Ilwaco	1,087	1,085	1,100	1,110
<b>Kittitas</b>	<b>46,468</b>	<b>\$ 45,225</b>	<b>47,200</b>	<b>47,300</b>	Long Beach	1,688	1,700	1,715	1,730
Unincorporated	20,567	20,530	21,045	21,180	Raymond	3,081	3,075	3,090	3,110
Incorporated	25,901	\$ 24,695	26,155	26,120	South Bend	1,746	1,750	1,735	1,755
Cle Elum	2,157	2,210	2,250	2,255					
Ellensburg	20,797	\$ 19,530	20,940	20,900	<b>Pend Oreille</b>	<b>13,401</b>	<b>13,475</b>	<b>13,625</b>	<b>13,725</b>
Kittitas	1,438	1,440	1,440	1,440	Unincorporated	10,272	10,345	10,480	10,575
Roslyn	950	955	960	960	Incorporated	3,129	3,130	3,145	3,150
South Cle Elum	559	560	565	565	Cusick	153	150	155	155
					lone	428	425	425	425
<b>Klickitat</b>	<b>22,735</b>	<b>23,000</b>	<b>23,150</b>	<b>23,250</b>	Metaline	162	160	160	160
Unincorporated	16,019	16,255	16,405	16,485	Metaline Falls	272	275	275	275
Incorporated	6,716	6,745	6,745	6,765	Newport	2,114	2,120	2,130	2,135

**Table 4. Populations of cities, towns, and counties: April 1, 2020 to April 1, 2023 (continued)**

<b>County Municipality</b>	<b>Census 2020</b>	<b>Estimate 2021'</b>	<b>Estimate 2022</b>	<b>Estimate 2023</b>	<b>County Municipality</b>	<b>Census 2020</b>	<b>Estimate 2021'</b>	<b>Estimate 2022</b>	<b>Estimate 2023</b>
<b>Pierce</b>	<b>920,393</b>	<b>928,200</b>	<b>937,400</b>	<b>946,300</b>	<b>Snohomish</b> <i>continued</i>				
Unincorporated	430,248	435,135	440,800	446,150	Mukilteo	21,538	21,560	21,590	21,590
Incorporated	490,145	493,065	496,600	500,150	Snohomish	10,126	10,160	10,200	10,330
Auburn <i>part</i>	10,013	10,040	10,060	10,060	Stanwood	7,705	7,980	8,405	8,585
Bonney Lake	21,750 \$	23,510	22,990	23,250	Sultan	5,146	5,370	6,260	6,730
Buckley	5,114	5,300	5,315	5,555	Woodway	1,318	1,325	1,330	1,340
Carbonado	734	740	740	745					
DuPont	10,151	10,180	10,180	10,180	<b>Spokane</b>	<b>539,339</b>	<b>542,100</b>	<b>550,700</b>	<b>554,600</b>
Eatonville	2,845	2,875	2,890	2,900	Unincorporated	158,524	159,560	162,715	163,390
Edgewood	12,327	13,110	13,520	13,590	Incorporated	380,815	382,540	387,985	391,210
Enumclaw <i>part</i>	0	0	0	0	Airway Heights	10,757	10,760	11,040	11,280
Fife	10,999	11,150	11,130	11,150	Cheney	13,255	12,390	12,920	13,160
Fircrest	7,156	7,195	7,215	7,235	Deer Park	4,383	4,520	4,670	4,925
Gig Harbor	12,029	12,200	12,540	13,060	Fairfield	589	600	600	600
Lakewood	63,612	63,600	63,800	64,150	Latah	185	185	185	185
Milton <i>part</i>	7,057	7,065	7,065	7,080	Liberty Lake	12,003	12,480	12,870	13,150
Orting	9,041	9,010	9,055	9,110	Medical Lake	4,874	4,870	4,840	4,915
Pacific <i>part</i>	41	40	40	40	Millwood	1,881	1,915	1,915	1,925
Puyallup	42,973	43,060	43,260	43,420	Rockford	522	520	545	570
Roy	816	815	815	815	Spangle	280	280	280	280
Ruston	1,055	1,060	1,060	1,065	Spokane	228,989	229,400	230,900	232,700
South Prairie	373	375	620	645	Spokane Valley	102,976	104,500	107,100	107,400
Steilacoom	6,727	6,745	6,790	6,825	Waverly	121	120	120 *	120
Sumner	10,621	10,700	10,800	10,800					
Tacoma	219,346	218,700	220,800	222,400	<b>Stevens</b>	<b>46,445</b>	<b>46,725</b>	<b>47,050</b>	<b>47,350</b>
University Place	34,866	35,100	35,420	35,580	Unincorporated	36,675	36,925	37,172	37,405
Wilkeson	499	495	495	495	Incorporated	9,770	9,800	9,878	9,945
					Chewelah	2,470	2,485	2,535	2,580
<b>San Juan</b>	<b>17,788</b>	<b>17,850</b>	<b>18,150</b>	<b>18,350</b>	Colville	4,917	4,910	4,900	4,925
Unincorporated	15,175 \$	15,220	15,470	15,635	Kettle Falls	1,636	1,655	1,650	1,640
Incorporated	2,613 \$	2,630	2,680	2,715	Marcus	216	215	215	215
Friday Harbor	2,613 \$	2,630	2,680	2,715	Northport	297	295	295	295
					Springdale	234	240	283 *	290
<b>Skagit</b>	<b>129,523</b>	<b>130,000</b>	<b>131,250</b>	<b>132,000</b>					
Unincorporated	52,606	52,750	52,970	53,065	<b>Thurston</b>	<b>294,793</b>	<b>297,800</b>	<b>300,500</b>	<b>303,400</b>
Incorporated	76,917	77,250	78,280	78,935	Unincorporated	144,856	145,255	143,760	143,980
Anacortes	17,637	17,750	17,880	18,020	Incorporated	149,937	152,545	156,740	159,420
Burlington	9,152	9,290	9,800	9,905	Bucoda	600	595	610	620
Concrete	801	805	810	810	Lacey	53,526	54,850	58,180	59,430
Hamilton	299	295	295	295	Olympia	55,382 \$	55,960	56,370	56,900
La Conner	965	970	980	990	Rainier	2,369	2,440	2,510	2,555
Lyman	423	420	425	425	Tenino	1,870	2,010	2,030	2,045
Mount Vernon	35,219	35,390	35,500	35,590	Tumwater	25,573 \$	26,050	26,360	27,100
Sedro-Woolley	12,421	12,330	12,590	12,900	Yelm	10,617	10,640	10,680	10,770
<b>Skamania</b>	<b>11,604 \$</b>	<b>11,750</b>	<b>11,900</b>	<b>12,000</b>	<b>Wahkiakum</b>	<b>4,422</b>	<b>4,475</b>	<b>4,525</b>	<b>4,550</b>
Unincorporated	9,148	9,255	9,375	9,460	Unincorporated	3,862	3,915	3,965	3,975
Incorporated	2,456 \$	2,495	2,525	2,540	Incorporated	560	560	560	575
North Bonneville	965 \$	970	975	975	Cathlamet	560	560	560	575
Stevenson	1,491	1,525	1,550	1,565					
					<b>Walla Walla</b>	<b>62,584</b>	<b>62,100</b>	<b>62,625</b>	<b>63,100</b>
<b>Snohomish</b>	<b>827,957</b>	<b>837,800</b>	<b>847,300</b>	<b>859,800</b>	Unincorporated	17,084	17,110	17,200	17,340
Unincorporated	367,716	371,300	371,915	374,435	Incorporated	45,500	44,990	45,425	45,760
Incorporated	460,241	466,500	475,385	485,365	College Place	9,902	9,775	9,855	9,890
Arlington	19,868	20,690	21,260	21,740	Prescott	372	370	370	375
Bothell <i>part</i>	19,205	19,400	19,730	20,270	Waitsburg	1,166	1,165	1,180	1,185
Brier	6,560	6,570	6,590	6,610	Walla Walla	34,060	33,680	34,020	34,310
Darrington	1,462	1,470	1,490	1,505					
Edmonds	42,853	42,900	42,980	43,370	<b>Whatcom</b>	<b>226,847</b>	<b>226,300</b>	<b>231,650</b>	<b>235,800</b>
Everett	110,629	112,300	113,300	114,200	Unincorporated	92,660 \$	92,730	93,130	94,175
Gold Bar	2,403	2,420	2,290	2,305	Incorporated	134,187 \$	133,570	138,520	141,625
Granite Falls	4,450	4,490	4,705	4,775	Bellingham	91,482	89,860	93,910	95,960
Index	155	155	155	155	Blaine	5,884	6,020	6,130	6,310
Lake Stevens	35,630	37,000	40,700	41,260	Everson	2,888	2,935	3,060	3,135
Lynnwood	38,568	38,650	38,740	40,790	Ferndale	15,048	15,570	15,970	16,330
Marysville	70,714	71,250	72,380	73,780	Lynden	15,749	15,930	16,150	16,520
Mill Creek	20,926	20,930	21,510	21,630	Nooksack	1,471	1,515	1,560	1,560
Monroe	19,699	19,900	19,700	20,590	Sumas	1,665 *	1,740	1,740	1,810
Mountlake Terrace	21,286	21,980	22,070	23,810					



**Table 4. Populations of cities, towns, and counties: April 1, 2020 to April 1, 2023 (continued)**

<u>County Municipality</u>	<u>Census 2020</u>	<u>Estimate 2021<sup>1</sup></u>	<u>Estimate 2022</u>	<u>Estimate 2023</u>	<u>County Municipality</u>	<u>Census 2020</u>	<u>Estimate 2021<sup>1</sup></u>	<u>Estimate 2022</u>	<u>Estimate 2023</u>
<b>Whitman</b>	<b>47,973</b>	<b>44,600</b>	<b>47,800</b>	<b>48,100</b>	<b>Yakima <i>continued</i></b>				
Unincorporated	5,929	5,880	5,920	5,930	Grandview	10,910	\$ 10,960	11,020	11,250
Incorporated	42,044	38,720	41,880	42,170	Granger	3,624	3,690	3,740	3,775
Albion	550	545	545	540	Harrah	585	580	580	580
Colfax	2,782	2,765	2,785	2,785	Mabton	1,959	1,975	1,975	1,965
Colton	401	400	405	410	Moxee	4,326	4,405	4,665	4,785
Endicott	312	310	310	310	Naches	1,084	1,110	1,125	1,120
Farmington	131	135	140	140	Selah	8,153	8,235	8,365	8,450
Garfield	562	565	565	565	Sunnyside	16,375	16,400	16,500	16,530
LaCrosse	297	300	300	295	Tieton	1,389	1,430	1,505	1,545
Lamont	79	80	80	85	Toppenish	8,854	8,870	8,870	8,900
Malden	216	110	135	135	Union Gap	6,568	6,595	6,640	6,660
Oakesdale	395	400	400	400	Wapato	4,607	4,610	4,615	4,620
Palouse	1,015	1,020	1,035	1,050	Yakima	96,968	97,810	98,200	98,650
Pullman	32,901	29,690	32,790	33,060	Zillah	3,179	3,190	3,195	3,215
Rosalia	598	600	590	585					
St. John	599	600	600	605	<b>Washington</b>	<b>7,706,310</b>	<b>\$ 7,766,975</b>	<b>7,864,400</b>	<b>7,951,150</b>
Tekoa	817	810	810	805	Unincorporated	2,668,754	\$ 2,689,740	2,708,392	2,728,885
Uniontown	389	390	390	400	Incorporated	5,037,556	\$ 5,077,235	5,156,008	5,222,265
<b>Yakima</b>	<b>256,728</b>	<b>258,100</b>	<b>259,950</b>	<b>261,200</b>					
Unincorporated	88,147	\$ 88,240	88,955	89,155					
Incorporated	168,581	\$ 169,860	170,995	172,045					

- Notes:
- The county and municipal populations shown for 2020 are, with a few exceptions, the 2020 federal census PL 94-174 counts. Some 2020 counts may differ from the federal census. See Table 5 for more information.
  - With the exception of corrections to federal census counts, annual estimates in this official series are not revised on the basis of other information that becomes available after the estimate date.
  - <sup>1</sup>The 2021 estimates in this table were revised November 30, 2021 after the 2020 Census P.L. 94-171 became available. These 2021 estimates supersede the estimates OFM released on June 30, 2021.

- Symbols:
- \* State certified special census
  - # Informal census. A population and housing count that is considered accurate but does not meet all special census certification.
  - + Informal count. A population count that is considered accurate but does not meet special census certification.
  - \$ Adjusted census 2020 population and housing. See Table 5 for more information.

**Table 5. Federal corrections and OFM adjustments to Census 2020 Public Law 94-171 counts**

The Office of Financial Management is responsible for April 1 population determinations that are used for state revenue allocations to local governments and in selected state programs requiring population as a criterion for funding and/or administration.

Abbreviations: Occ. - Occupied, Vac. - Vacant, HH - Household, GQ - Group Quarters

**I. OFM Adjustments to Census 2020 Counts Due to Misallocation of Housing Units and/or Group Quarters**

Municipality	Federal Census 2020						Change						Adjusted Federal Census					
	Housing Units			Population			Housing Units			Population			Housing Units			Population		
	Total	Occ.	Vac.	HH	GQ	Total	Total	Occ.	Vac.	HH	GQ	Total	Total	Occ.	Vac.	HH	GQ	Total
<b>Chelan</b>	37,267	30,296	6,971	77,420	1,654	79,074	0	0	0	0	67	67	37,267	30,296	6,971	77,420	1,721	79,141
Wenatchee*	14,594	13,793	801	34,529	979	35,308	0	0	0	0	67	67	14,594	13,793	801	34,529	1,046	35,375
<b>Kittitas</b>	23,743	18,650	5,093	43,168	1,169	44,337	0	0	0	0	2,131	2,131	23,743	18,650	5,093	43,168	3,300	46,468
Ellensburg*	8,924	8,110	814	17,573	1,093	18,666	0	0	0	0	2,131	2,131	8,924	8,110	814	17,573	3,224	20,797
<b>Pierce</b>	359,489	339,840	19,649	897,839	23,291	921,130	0	0	0	0	-737	-737	359,489	339,840	19,649	897,839	22,554	920,393
Bonney Lake*	7,605	7,364	241	21,724	763	22,487	0	0	0	0	-737	-737	7,605	7,364	241	21,724	26	21,750
<b>Skamania</b>	5796	4748	1048	11578	458	12036	-2	-2	0	-24	-408	-432	5,794	4,746	1,048	11,554	50	11,604
North Bonneville*	454	426	28	989	408	1,397	-2	-2	0	-24	-408	-432	452	424	28	965	0	965
<b>Thurston</b>	25,642	24,393	1,249	53,950	1,655	55,605	0	0	0	0	-223	-223	25,642	24,393	1,249	53,950	1,432	55,382
Olympia Tumwater	10,847	10,488	359	25,074	276	25,350	0	0	0	0	223	223	10,847	10,488	359	25,074	499	25,573

**II. OFM Adjustments to Census 2020 Counts Due to Annexation Activity from Jan. 2, 2020, through April 1, 2020**

Municipality	Federal Census 2020						Change						Adjusted Federal Census					
	Housing Units			Population			Housing Units			Population			Housing Units			Population		
	Total	Occ.	Vac.	HH	GQ	Total	Total	Occ.	Vac.	HH	GQ	Total	Total	Occ.	Vac.	HH	GQ	Total
<b>Clark</b>	84,569	81,674	2,895	231,569	1,485	233,054	-1	-1	0	-6	0	-6	84,568	81,673	2,895	231,563	1,485	233,048
Unincorporated Ridgefield	3,687	3,432	255	10,290	29	10,319	1	1	0	6	0	6	3,688	3,433	255	10,296	29	10,325
<b>Cowlitz</b>	19,196	18,005	1,191	48,147	193	48,340	-1	-1	0	-1	0	-1	19,195	18,004	1,191	48,146	193	48,339
Unincorporated Kalama	1,271	1,198	73	2,959	0	2,959	1	1	0	1	0	1	1,272	1,199	73	2,960	0	2,960
<b>San Juan</b>	12,319	7,272	5,047	15,100	75	15,175	-1	0	-1	0	0	0	12,318	7,272	5,046	15,100	75	15,175
Unincorporated Friday Harbor	1,453	1,174	279	2,567	46	2,613	1	0	1	0	0	0	1,454	1,174	280	2,567	46	2,613
<b>Yakima</b>	31,028	29,086	1,942	87,071	1,079	88,150	-2	-2	0	-3	0	-3	31,026	29,084	1,942	87,068	1,079	88,147
Unincorporated Grandview	3,273	3,160	113	10,824	83	10,907	2	2	0	3	0	3	3,275	3,162	113	10,827	83	10,910

### III. OFM Certified April 1, 2020, Special City Census Counts Used in Place of Census 2020 Counts

Municipality	Federal Census 2020						Change						Adjustments due to Special Census					
	Housing Units			Population			Housing Units			Population			Housing Units			Population		
	Total	Occ.	Vac.	HH	GQ	Total	Total	Occ.	Vac.	HH	GQ	Total	Total	Occ.	Vac.	HH	GQ	Total
<b>Whatcom</b>																		
Unincorporated	42,234	35,148	7,086	92,244	498	92,742	-71	-50	-21	-82	0	-82	42,163	35,098	7,065	92,162	498	92,660
Sumas	604	568	36	1,583	0	1,583	71	50	21	82	0	82	675	618	57	1,665	0	1,665

### IV. Summary of Changes to 2020 Federal Census Counts Due to Federal Corrections, Annexations and Special City Censuses

Municipality	Federal Census 2020						Change						Adjusted Federal Census					
	Housing Units			Population			Housing Units			Population			Housing Units			Population		
	Total	Occ.	Vac.	HH	GQ	Total	Total	Occ.	Vac.	HH	GQ	Total	Total	Occ.	Vac.	HH	GQ	Total
<b>Chelan (C)</b>	37,267	30,296	6,971	77,420	1,654	79,074	0	0	0	0	67	67	37,267	30,296	6,971	77,420	1,721	79,141
Wenatchee* (C)	14,594	13,793	801	34,529	979	35,308	0	0	0	0	67	67	14,594	13,793	801	34,529	1,046	35,375
<b>Clark</b>																		
Unincorporated (A)	84,569	81,674	2,895	231,569	1,485	233,054	-1	-1	0	-6	0	-6	84,568	81,673	2,895	231,563	1,485	233,048
Ridgefield (A)	3,687	3,432	255	10,290	29	10,319	1	1	0	6	0	6	3,688	3,433	255	10,296	29	10,325
<b>Cowlitz</b>																		
Unincorporated (A)	19,196	18,005	1,191	48,147	193	48,340	-1	-1	0	-1	0	-1	19,195	18,004	1,191	48,146	193	48,339
Kalama (A)	1,271	1,198	73	2,959	0	2,959	1	1	0	1	0	1	1,272	1,199	73	2,960	0	2,960
<b>Kittitas</b>																		
Unincorporated (A)	23,743	18,650	5,093	43,168	1,169	44,337	0	0	0	0	2,131	2,131	23,743	18,650	5,093	43,168	3,300	46,468
Ellensburg* (C)	8,924	8,110	814	17,573	1,093	18,666	0	0	0	0	2,131	2,131	8,924	8,110	814	17,573	3,224	20,797
<b>Pierce</b>																		
Unincorporated (A)	359,489	339,840	19,649	897,839	23,291	921,130	0	0	0	0	-737	-737	359,489	339,840	19,649	897,839	22,554	920,393
Bonney Lake* (C)	7,605	7,364	241	21,724	763	22,487	0	0	0	0	-737	-737	7,605	7,364	241	21,724	26	21,750
<b>San Juan</b>																		
Unincorporated (A)	12,319	7,272	5,047	15,100	75	15,175	-1	0	-1	0	0	0	12,318	7,272	5,046	15,100	75	15,175
Friday Harbor (A)	1,453	1,174	279	2,567	46	2,613	1	0	1	0	0	0	1,454	1,174	280	2,567	46	2,613
<b>Skamania (C)</b>																		
Unincorporated (A)	5796	4748	1048	11578	458	12036	-2	-2	0	-24	-408	-432	5,794	4,746	1,048	11,554	50	11,604
N. Bonneville* (C)	454	426	28	989	408	1,397	-2	-2	0	-24	-408	-432	452	424	28	965	0	965
<b>Thurston</b>																		
Unincorporated (A)	25,642	24,393	1,249	53,950	1,655	55,605	0	0	0	0	-223	-223	25,642	24,393	1,249	53,950	1,432	55,382
Tumwater (C)	10,847	10,488	359	25,074	276	25,350	0	0	0	0	223	223	10,847	10,488	359	25,074	499	25,573
<b>Whatcom</b>																		
Unincorporated (B)	42,234	35,148	7,086	92,244	498	92,742	-71	-50	-21	-82	0	-82	42,163	35,098	7,065	92,162	498	92,660
Sumas (B)	604	568	36	1,583	0	1,583	71	50	21	82	0	82	675	618	57	1,665	0	1,665
<b>Yakima</b>																		
Unincorporated (A)	31,028	29,086	1,942	87,071	1,079	88,150	-2	-2	0	-3	0	-3	31,026	29,084	1,942	87,068	1,079	88,147
Grandview (A)	3,273	3,160	113	10,824	83	10,907	2	2	0	3	0	3	3,275	3,162	113	10,827	83	10,910
<b>State (C)</b>	3,202,241	2,974,692	227,549	7,545,074	160,207	7,705,281	-2	-2	0	-24	1,053	1,029	3,202,239	2,974,690	227,549	7,545,050	161,260	7,706,310

- Symbols:
- A Population and housing units added to the cities due to annexations effective from Jan. 2, 2020, through April 1, 2020.
  - B Special city April 1, 2020, censuses used in place of the federal censuses.
  - C OFM corrections to federal counts due to misallocation of population and housing units. OFM corrections with an asterisk (\*) effect county and state totals.

**Table 6. Rank of cities and towns by April 1, 2020 and April 1, 2023 population size**

<u>Municipality</u>	<u>Census 2020</u>	<u>Estimate 2023</u>	<u>Rank by Population Size</u>		<u>Population Change: 2020 to 2023</u>		
			<u>2020</u>	<u>2023</u>	<u>Numeric Change</u>	<u>Rank by Numeric Change</u>	<u>Change Due to Annexation</u>
Seattle	737,015	779,200	1	1	42,185	1	0
Spokane	228,989	232,700	2	2	3,711	11	0
Tacoma	219,346	222,400	3	3	3,054	14	0
Vancouver	190,915	199,600	4	4	8,685	2	0
Bellevue	151,854	154,600	5	5	2,746	16	0
Kent	136,588	139,100	6	6	2,512	19	0
Everett	110,629	114,200	7	7	3,571	12	0
Renton	106,785	107,900	8	8	1,115	41	39
Spokane Valley	102,976	107,400	9	9	4,424	8	0
Federal Way	101,030	102,000	10	10	970	45	0
Yakima	96,968	98,650	11	11	1,682	25	4
Kirkland	92,175	96,920	12	12	4,745	6	0
Bellingham	91,482	95,960	13	13	4,478	7	0
Auburn	87,256	88,820	14	14	1,564	27	0
Kennewick	83,921	86,470	15	15	2,549	17	0
Pasco	77,108	81,280	16	16	4,172	10	220
Redmond	73,256	77,490	17	17	4,234	9	0
Marysville	70,714	73,780	18	18	3,066	13	0
Sammamish	67,455	68,280	19	19	825	48	0
Lakewood	63,612	64,150	20	20	538	60	0
Richland	60,560	63,320	21	21	2,760	15	27
Shoreline	58,608	61,120	22	22	2,512	19	0
Lacey	53,526	59,430	24	23	5,904	3	2,612
Olympia	55,382	56,900	23	24	1,518	30	0
Burien	52,066	52,560	25	25	494	65	0
Bothell	48,161	49,550	26	26	1,389	32	0
Bremerton	43,505	44,640	27	27	1,135	40	0
Puyallup	42,973	43,420	28	28	447	71	41
Edmonds	42,853	43,370	29	29	517	63	0
Issaquah	40,051	41,290	30	30	1,239	36	0
Lake Stevens	35,630	41,260	33	31	5,630	4	3,078
Lynnwood	38,568	40,790	31	32	2,222	21	0
Longview	37,818	38,130	32	33	312	88	0
Wenatchee	35,575	35,850	34	34	275	93	41
Mount Vernon	35,219	35,590	35	35	371	79	0
University Place	34,866	35,580	36	36	714	53	0
Walla Walla	34,060	34,310	37	37	250	95	126
Des Moines	32,888	33,260	39	38	372	78	0
Pullman	32,901	33,060	38	39	159	107	4
SeaTac	31,454	31,740	40	40	286	91	0
Maple Valley	28,013	29,250	41	41	1,237	37	0
Camas	26,065	27,420	42	42	1,355	33	1
Tumwater	25,573	27,100	44	43	1,527	29	439
Moses Lake	25,146	26,210	45	44	1,064	42	118
Mercer Island	25,748	25,800	43	45	52	145	0
Bainbridge Island	24,825	25,180	46	46	355	81	0
Oak Harbor	24,622	24,780	47	47	158	108	1
Kenmore	23,914	24,230	48	48	316	87	0
Mountlake Terrace	21,286	23,810	52	49	2,524	18	0
Bonney Lake	21,750	23,250	50	50	1,500	31	0

**Table 6. Rank of cities and towns by April 1, 2020 and April 1, 2023 population size (continued)**

<u>Municipality</u>	<u>Census 2020</u>	<u>Estimate 2023</u>	<u>Rank by Population Size</u>		<u>Population Change: 2020 to 2023</u>		
			<u>2020</u>	<u>2023</u>	<u>Numeric Change</u>	<u>Rank by Numeric Change</u>	<u>Change Due to Annexation</u>
Tukwila	21,798	22,780	49	51	982	44	0
Battle Ground	20,743	21,910	56	52	1,167	38	10
Arlington	19,868	21,740	58	53	1,872	24	36
Mill Creek	20,926	21,630	53	54	704	54	0
Covington	20,777	21,600	55	55	823	49	0
Mukilteo	21,538	21,590	51	56	52	145	0
Ellensburg	20,797	20,900	54	57	103	122	670
Monroe	19,699	20,590	59	58	891	46	660
Port Angeles	19,960	20,240	57	59	280	92	0
Centralia	18,183	18,400	60	60	217	99	0
Anacortes	17,637	18,020	61	61	383	75	0
West Richland	16,295	17,840	65	62	1,545	28	0
Washougal	17,039	17,490	62	63	451	70	6
Port Orchard	15,587	17,480	67	64	1,893	23	0
Aberdeen	17,013	17,080	63	65	67	137	0
Sunnyside	16,375	16,530	64	66	155	110	5
Lynden	15,749	16,520	66	67	771	50	0
Ferndale	15,048	16,330	68	68	1,282	34	0
Ridgefield	10,325	15,180	88	69	4,855	5	20
Snoqualmie	14,121	14,500	70	70	379	77	0
East Wenatchee	14,158	14,210	69	71	52	145	0
Woodinville	13,069	13,830	73	72	761	51	0
Lake Forest Park	13,630	13,660	71	73	30	167	0
Newcastle	13,017	13,610	74	74	593	57	0
Edgewood	12,327	13,590	78	75	1,263	35	0
Cheney	13,255	13,160	72	76	-95	279	0
Liberty Lake	12,003	13,150	80	77	1,147	39	0
Enumclaw	12,543	13,090	76	78	547	58	0
Gig Harbor	12,029	13,060	79	79	1,031	43	0
Sedro-Woolley	12,421	12,900	77	80	479	66	1
Kelso	12,720	12,750	75	81	30	167	0
Poulsbo	11,975	12,400	81	82	425	74	0
Airway Heights	10,757	11,280	84	83	523	61	0
Grandview	10,910	11,250	83	84	340	82	33
Fife	10,999	11,150	82	85	151	112	7
Sumner	10,621	10,800	85	86	179	104	0
Yelm	10,617	10,770	86	87	153	111	0
Shelton	10,371	10,420	87	88	49	149	0
Port Townsend	10,148	10,330	90	89	182	103	0
Snohomish	10,126	10,330	91	89	204	101	0
DuPont	10,151	10,180	89	91	29	169	0
Burlington	9,152	9,905	93	92	753	52	0
College Place	9,902	9,890	92	93	-12	271	2
Orting	9,041	9,110	94	94	69	135	0
Othello	8,549	9,005	98	95	456	69	0
Toppenish	8,854	8,900	95	96	46	151	0
Hoquiam	8,776	8,795	96	97	19	180	0
Milton	8,697	8,715	97	98	18	182	0
Ephrata	8,477	8,690	99	99	213	100	0
Stanwood	7,705	8,585	103	100	880	47	1

**Table 6. Rank of cities and towns by April 1, 2020 and April 1, 2023 population size (continued)**

<u>Municipality</u>	<u>Census 2020</u>	<u>Estimate 2023</u>	<u>Rank by Population Size</u>		<u>Population Change: 2020 to 2023</u>		
			<u>2020</u>	<u>2023</u>	<u>Numeric Change</u>	<u>Rank by Numeric Change</u>	<u>Change Due to Annexation</u>
Duvall	8,034	8,530	101	101	496	64	0
Selah	8,153	8,450	100	102	297	89	0
Sequim	8,024	8,350	102	103	326	85	0
North Bend	7,461	8,120	105	104	659	56	0
Quincy	7,543	8,065	104	105	522	62	0
Chehalis	7,439	7,400	106	106	-39	276	0
Ocean Shores	6,715	7,380	112	107	665	55	0
Pacific	7,235	7,270	107	108	35	162	0
Fircrest	7,156	7,235	109	109	79	130	0
Clarkston	7,161	7,220	108	110	59	141	0
Black Diamond	4,697	6,880	124	111	2,183	22	0
Normandy Park	6,771	6,840	110	112	69	135	0
Steilacoom	6,727	6,825	111	113	98	124	0
Sultan	5,146	6,730	119	114	1,584	26	3
Union Gap	6,568	6,660	113	115	92	126	0
Brier	6,560	6,610	114	116	50	148	0
Woodland	6,531	6,570	115	117	39	159	0
Prosser	6,062	6,445	116	118	383	75	36
Blaine	5,884	6,310	117	119	426	73	5
Buckley	5,114	5,555	120	120	441	72	0
Omak	4,860	4,980	123	121	120	117	6
Connell	5,441	4,960	118	122	-481	281	0
Colville	4,917	4,925	121	123	8	209	4
Deer Park	4,383	4,925	127	123	542	59	0
Medical Lake	4,874	4,915	122	125	41	157	0
Moxee	4,326	4,785	128	126	459	68	0
Granite Falls	4,450	4,775	126	127	325	86	0
Wapato	4,607	4,620	125	128	13	191	0
Chelan	4,222	4,470	129	129	248	96	0
Montesano	4,138	4,090	130	130	-48	277	5
La Center	3,424	3,890	135	131	466	67	0
Benton City	3,479	3,810	132	132	331	83	0
Granger	3,624	3,775	131	133	151	112	0
Mattawa	3,335	3,575	136	134	240	98	1
Goldendale	3,453	3,485	133	135	32	165	0
Elma	3,438	3,480	134	136	42	155	0
Forks	3,335	3,395	136	137	60	140	29
Cashmere	3,248	3,355	139	138	107	120	0
Algona	3,290	3,315	138	139	25	171	0
Zillah	3,179	3,215	140	140	36	160	0
Everson	2,888	3,135	145	141	247	97	59
Clyde Hill	3,126	3,115	141	142	-11	270	0
Raymond	3,081	3,110	142	143	29	169	0
Kalama	2,960	3,070	143	144	110	118	0
Medina	2,915	2,925	144	145	10	200	0
Eatonville	2,845	2,900	146	146	55	143	0
Colfax	2,782	2,785	147	147	3	227	0
Friday Harbor	2,613	2,715	148	148	102	123	0
Warden	2,449	2,625	151	149	176	105	0
Leavenworth	2,263	2,590	157	150	327	84	0

**Table 6. Rank of cities and towns by April 1, 2020 and April 1, 2023 population size (continued)**

<u>Municipality</u>	<u>Census 2020</u>	<u>Estimate 2023</u>	<u>Rank by Population Size</u>		<u>Population Change: 2020 to 2023</u>		
			<u>2020</u>	<u>2023</u>	<u>Numeric Change</u>	<u>Rank by Numeric Change</u>	<u>Change Due to Annexation</u>
Chewelah	2,470	2,580	150	151	110	118	0
Rainier	2,369	2,555	156	152	186	102	0
White Salmon	2,485	2,500	149	153	15	186	0
Castle Rock	2,446	2,460	153	154	14	189	0
Dayton	2,448	2,445	152	155	-3	261	0
Okanogan	2,379	2,420	155	156	41	157	2
Gold Bar	2,403	2,305	154	157	-98	280	0
Westport	2,213	2,295	158	158	82	129	0
Cle Elum	2,157	2,255	160	159	98	124	0
Carnation	2,158	2,225	159	160	67	137	0
Bridgeport	2,141	2,155	161	161	14	189	0
Newport	2,114	2,135	162	162	21	176	0
McCleary	1,997	2,120	163	163	123	116	0
Tenino	1,870	2,045	169	164	175	106	0
Brewster	1,983	1,995	164	165	12	194	0
Coupeville	1,942	1,995	166	165	53	144	0
Napavine	1,888	1,995	167	165	107	120	0
Mabton	1,959	1,965	165	168	6	212	0
Millwood	1,881	1,925	168	169	44	152	0
Royal City	1,776	1,910	171	170	134	115	0
Winlock	1,472	1,835	182	171	363	80	0
Oroville	1,795	1,810	170	172	15	186	0
Sumas	1,665	1,810	178	172	145	114	0
Ritzville	1,767	1,785	172	174	18	182	7
Soap Lake	1,691	1,765	175	175	74	133	0
South Bend	1,746	1,755	173	176	9	204	0
Long Beach	1,688	1,730	176	177	42	155	0
Davenport	1,703	1,725	174	178	22	174	0
Cosmopolis	1,638	1,670	179	179	32	165	0
Yacolt	1,668	1,670	177	179	2	232	0
Kettle Falls	1,636	1,640	180	181	4	224	9
Rock Island	1,279	1,570	190	182	291	90	0
Stevenson	1,491	1,565	181	183	74	133	0
Nooksack	1,471	1,560	183	184	89	127	0
Tieton	1,389	1,545	186	185	156	109	0
Darrington	1,462	1,505	184	186	43	154	0
Kittitas	1,438	1,440	185	187	2	232	0
Pomeroy	1,389	1,395	186	188	6	212	0
Entiat	1,326	1,360	188	189	34	164	0
Woodway	1,318	1,340	189	190	22	174	0
Asotin	1,204	1,225	192	191	21	176	0
Coulee Dam	1,211	1,210	191	192	-1	250	0
Waitsburg	1,166	1,185	193	193	19	180	0
Langley	1,147	1,165	194	194	18	182	0
Waterville	1,134	1,145	195	195	11	195	0
Yarrow Point	1,134	1,135	195	196	1	240	0
Naches	1,084	1,120	199	197	36	160	0
Ilwaco	1,087	1,110	198	198	23	173	0
Tonasket	1,103	1,085	197	199	-18	275	0
Morton	1,036	1,080	201	200	44	152	0

**Table 6. Rank of cities and towns by April 1, 2020 and April 1, 2023 population size (continued)**

<u>Municipality</u>	<u>Census 2020</u>	<u>Estimate 2023</u>	<u>Rank by Population Size</u>		<u>Population Change: 2020 to 2023</u>		
			<u>2020</u>	<u>2023</u>	<u>Numeric Change</u>	<u>Rank by Numeric Change</u>	<u>Change Due to Annexation</u>
Twisp	992	1,075	203	201	83	128	0
Ruston	1,055	1,065	200	202	10	200	0
Palouse	1,015	1,050	202	203	35	162	0
Republic	992	1,000	203	204	8	209	0
La Conner	965	990	206	205	25	171	0
North Bonneville	965	975	206	206	10	200	0
Electric City	956	965	208	207	9	204	0
Grand Coulee	972	960	205	208	-12	271	0
Roslyn	950	960	209	208	10	200	0
Wilbur	895	895	211	210	0	244	0
Odessa	896	890	210	211	-6	268	0
George	809	885	214	212	76	131	0
Roy	816	815	213	213	-1	250	0
Concrete	801	810	215	214	9	204	0
Tekoa	817	805	212	215	-12	271	0
Mossyrock	768	785	217	216	17	185	0
Bingen	778	780	216	217	2	232	0
Carbonado	734	745	218	218	11	195	0
Oakville	715	720	219	219	5	219	0
Toledo	631	695	222	220	64	139	0
Pe Ell	642	655	220	221	13	191	0
Rearadan	637	650	221	222	13	191	0
Vader	629	650	223	222	21	176	0
South Prairie	373	645	248	224	272	94	0
Bucoda	600	620	224	225	20	179	0
St. John	599	605	225	226	6	212	0
Fairfield	589	600	228	227	11	195	0
Pateros	593	595	227	228	2	232	0
Rosalia	598	585	226	229	-13	274	0
Harrah	585	580	229	230	-5	267	0
Winthrop	504	580	237	230	76	131	5
Cathlamet	560	575	231	232	15	186	0
Rockford	522	570	236	233	48	150	0
Garfield	562	565	230	234	3	227	0
South Cle Elum	559	565	232	234	6	212	0
Coulee City	549	560	234	236	11	195	0
Albion	550	540	233	237	-10	269	0
Lind	535	535	235	238	0	244	0
Sprague	495	500	239	239	5	219	0
Wilkeson	499	495	238	240	-4	263	0
Hunts Point	457	460	240	241	3	227	0
Harrington	429	435	241	242	6	212	0
Ione	428	425	242	243	-3	261	0
Lyman	423	425	243	243	2	232	0
Colton	401	410	244	245	9	204	0
Oakesdale	395	400	245	246	5	219	0
Uniontown	389	400	246	246	11	195	0
Mesa	385	390	247	248	5	219	0
Prescott	372	375	249	249	3	227	0
Mansfield	326	330	251	250	4	224	0



**Table 6. Rank of cities and towns by April 1, 2020 and April 1, 2023 population size (continued)**

<u>Municipality</u>	<u>Census 2020</u>	<u>Estimate 2023</u>	<u>Rank by Population Size</u>		<u>Population Change: 2020 to 2023</u>		
			<u>2020</u>	<u>2023</u>	<u>Numeric Change</u>	<u>Rank by Numeric Change</u>	<u>Change Due to Annexation</u>
Riverside	329	325	250	251	-4	263	0
Almira	318	320	252	252	2	232	0
Beaux Arts Village	317	315	253	253	-2	255	0
Endicott	312	310	254	254	-2	255	0
Hamilton	299	295	255	255	-4	263	0
LaCrosse	297	295	256	255	-2	255	0
Northport	297	295	256	255	-2	255	0
Springdale	234	290	261	258	56	142	0
Spangle	280	280	258	259	0	244	0
Metaline Falls	272	275	259	260	3	227	0
Elmer City	239	245	260	261	6	212	0
Creston	213	220	264	262	7	211	0
Marcus	216	215	262	263	-1	250	0
Washtucna	211	210	265	264	-1	250	0
Wilson Creek	204	205	266	265	1	240	0
Conconully	193	195	267	266	2	232	0
Latah	185	185	268	267	0	244	0
Nespelem	180	185	269	267	5	219	0
Hartline	180	180	269	269	0	244	0
Skykomish	161	165	272	270	4	224	0
Metaline	162	160	271	271	-2	255	0
Cusick	153	155	274	272	2	232	0
Index	155	155	273	272	0	244	0
Kahlotus	147	145	275	274	-2	255	0
Farmington	131	140	276	275	9	204	0
Malden	216	135	262	276	-81	278	0
Starbuck	119	120	278	277	1	240	0
Waverly	121	120	277	277	-1	250	0
Lamont	79	85	279	279	6	212	0
Hatton	79	80	279	280	1	240	0
Krupp	49	45	281	281	-4	263	0

- Notes:
- Part cities are combined for ranking purposes.
  - Negative annexed populations mean the city/town either de-annexed area or had a boundary line adjustment with either an adjoining city/town or its county.
  - With few exceptions, year 2020 data are federal census Public Law 94-171 data. See Table 5 for more information.

**Table 7. Alphabetical listing of cities and towns with population for April 1, 2023**

<u>Municipality</u>	<u>County</u>	<u>Population</u>	<u>Municipality</u>	<u>County</u>	<u>Population</u>
Aberdeen	Grays Harbor	17,080	Connell	Franklin	4,960
Airway Heights	Spokane	11,280	Cosmopolis	Grays Harbor	1,670
Albion	Whitman	540	Coulee City	Grant	560
Algona	King	3,315	Coulee Dam <i>part</i>	Douglas	200
Almira	Lincoln	320	Coulee Dam <i>part</i>	Grant	0
Anacortes	Skagit	18,020	Coulee Dam <i>part</i>	Okanogan	1,010
Arlington	Snohomish	21,740	Coupeville	Island	1,995
Asotin	Asotin	1,225	Covington	King	21,600
Auburn <i>part</i>	King	78,760	Creston	Lincoln	220
Auburn <i>part</i>	Pierce	10,060	Cusick	Pend Oreille	155
Bainbridge Island	Kitsap	25,180	Darrington	Snohomish	1,505
Battle Ground	Clark	21,910	Davenport	Lincoln	1,725
Beaux Arts Village	King	315	Dayton	Columbia	2,445
Bellevue	King	154,600	Deer Park	Spokane	4,925
Bellingham	Whatcom	95,960	Des Moines	King	33,260
Benton City	Benton	3,810	DuPont	Pierce	10,180
Bingen	Klickitat	780	Duvall	King	8,530
Black Diamond	King	6,880	East Wenatchee	Douglas	14,210
Blaine	Whatcom	6,310	Eatonville	Pierce	2,900
Bonney Lake	Pierce	23,250	Edgewood	Pierce	13,590
Bothell <i>part</i>	King	29,280	Edmonds	Snohomish	43,370
Bothell <i>part</i>	Snohomish	20,270	Electric City	Grant	965
Bremerton	Kitsap	44,640	Ellensburg	Kittitas	20,900
Brewster	Okanogan	1,995	Elma	Grays Harbor	3,480
Bridgeport	Douglas	2,155	Elmer City	Okanogan	245
Brier	Snohomish	6,610	Endicott	Whitman	310
Buckley	Pierce	5,555	Entiat	Chelan	1,360
Bucoda	Thurston	620	Enumclaw <i>part</i>	King	13,090
Burien	King	52,560	Enumclaw <i>part</i>	Pierce	0
Burlington	Skagit	9,905	Ephrata	Grant	8,690
Camas	Clark	27,420	Everett	Snohomish	114,200
Carbonado	Pierce	745	Everson	Whatcom	3,135
Carnation	King	2,225	Fairfield	Spokane	600
Cashmere	Chelan	3,355	Farmington	Whitman	140
Castle Rock	Cowlitz	2,460	Federal Way	King	102,000
Cathlamet	Wahkiakum	575	Ferndale	Whatcom	16,330
Centralia	Lewis	18,400	Fife	Pierce	11,150
Chehalis	Lewis	7,400	Fircrest	Pierce	7,235
Chelan	Chelan	4,470	Forks	Clallam	3,395
Cheney	Spokane	13,160	Friday Harbor	San Juan	2,715
Chewelah	Stevens	2,580	Garfield	Whitman	565
Clarkston	Asotin	7,220	George	Grant	885
Cle Elum	Kittitas	2,255	Gig Harbor	Pierce	13,060
Clyde Hill	King	3,115	Gold Bar	Snohomish	2,305
Colfax	Whitman	2,785	Goldendale	Klickitat	3,485
College Place	Walla Walla	9,890	Grand Coulee	Grant	960
Colton	Whitman	410	Grandview	Yakima	11,250
Colville	Stevens	4,925	Granger	Yakima	3,775
Conconully	Okanogan	195	Granite Falls	Snohomish	4,775
Concrete	Skagit	810	Hamilton	Skagit	295

**Table 7. Alphabetical listing of cities and towns with population for April 1, 2023 (continued)**

<u>Municipality</u>	<u>County</u>	<u>Population</u>	<u>Municipality</u>	<u>County</u>	<u>Population</u>
Harrah	Yakima	580	Metaline	Pend Oreille	160
Harrington	Lincoln	435	Metaline Falls	Pend Oreille	275
Hartline	Grant	180	Mill Creek	Snohomish	21,630
Hatton	Adams	80	Millwood	Spokane	1,925
Hoquiam	Grays Harbor	8,795	Milton <i>part</i>	King	1,635
Hunts Point	King	460	Milton <i>part</i>	Pierce	7,080
Ilwaco	Pacific	1,110	Monroe	Snohomish	20,590
Index	Snohomish	155	Montesano	Grays Harbor	4,090
Ione	Pend Oreille	425	Morton	Lewis	1,080
Issaquah	King	41,290	Moses Lake	Grant	26,210
Kahlotus	Franklin	145	Mossyrock	Lewis	785
Kalama	Cowlitz	3,070	Mount Vernon	Skagit	35,590
Kelso	Cowlitz	12,750	Mountlake Terrace	Snohomish	23,810
Kenmore	King	24,230	Moxee	Yakima	4,785
Kennewick	Benton	86,470	Mukilteo	Snohomish	21,590
Kent	King	139,100	Naches	Yakima	1,120
Kettle Falls	Stevens	1,640	Napavine	Lewis	1,995
Kirkland	King	96,920	Nespelem	Okanogan	185
Kittitas	Kittitas	1,440	Newcastle	King	13,610
Krupp	Grant	45	Newport	Pend Oreille	2,135
La Center	Clark	3,890	Nooksack	Whatcom	1,560
La Conner	Skagit	990	Normandy Park	King	6,840
Lacey	Thurston	59,430	North Bend	King	8,120
LaCrosse	Whitman	295	North Bonneville	Skamania	975
Lake Forest Park	King	13,660	Northport	Stevens	295
Lake Stevens	Snohomish	41,260	Oak Harbor	Island	24,780
Lakewood	Pierce	64,150	Oakesdale	Whitman	400
Lamont	Whitman	85	Oakville	Grays Harbor	720
Langley	Island	1,165	Ocean Shores	Grays Harbor	7,380
Latah	Spokane	185	Odessa	Lincoln	890
Leavenworth	Chelan	2,590	Okanogan	Okanogan	2,420
Liberty Lake	Spokane	13,150	Olympia	Thurston	56,900
Lind	Adams	535	Omak	Okanogan	4,980
Long Beach	Pacific	1,730	Oroville	Okanogan	1,810
Longview	Cowlitz	38,130	Orting	Pierce	9,110
Lyman	Skagit	425	Othello	Adams	9,005
Lynden	Whatcom	16,520	Pacific <i>part</i>	King	7,230
Lynnwood	Snohomish	40,790	Pacific <i>part</i>	Pierce	40
Mabton	Yakima	1,965	Palouse	Whitman	1,050
Malden	Whitman	135	Pasco	Franklin	81,280
Mansfield	Douglas	330	Pateros	Okanogan	595
Maple Valley	King	29,250	Pe Ell	Lewis	655
Marcus	Stevens	215	Pomeroy	Garfield	1,395
Marysville	Snohomish	73,780	Port Angeles	Clallam	20,240
Mattawa	Grant	3,575	Port Orchard	Kitsap	17,480
McCleary	Grays Harbor	2,120	Port Townsend	Jefferson	10,330
Medical Lake	Spokane	4,915	Poulsbo	Kitsap	12,400
Medina	King	2,925	Prescott	Walla Walla	375
Mercer Island	King	25,800	Prosser	Benton	6,445
Mesa	Franklin	390	Pullman	Whitman	33,060

**Table 7. Alphabetical listing of cities and towns with population for April 1, 2023 (continued)**

<u>Municipality</u>	<u>County</u>	<u>Population</u>	<u>Municipality</u>	<u>County</u>	<u>Population</u>
Puyallup	Pierce	43,420	Tenino	Thurston	2,045
Quincy	Grant	8,065	Tieton	Yakima	1,545
Rainier	Thurston	2,555	Toledo	Lewis	695
Raymond	Pacific	3,110	Tonasket	Okanogan	1,085
Reardan	Lincoln	650	Toppenish	Yakima	8,900
Redmond	King	77,490	Tukwila	King	22,780
Renton	King	107,900	Tumwater	Thurston	27,100
Republic	Ferry	1,000	Twisp	Okanogan	1,075
Richland	Benton	63,320	Union Gap	Yakima	6,660
Ridgefield	Clark	15,180	Uniontown	Whitman	400
Ritzville	Adams	1,785	University Place	Pierce	35,580
Riverside	Okanogan	325	Vader	Lewis	650
Rock Island	Douglas	1,570	Vancouver	Clark	199,600
Rockford	Spokane	570	Waitsburg	Walla Walla	1,185
Rosalia	Whitman	585	Walla Walla	Walla Walla	34,310
Roslyn	Kittitas	960	Wapato	Yakima	4,620
Roy	Pierce	815	Warden	Grant	2,625
Royal City	Grant	1,910	Washougal	Clark	17,490
Ruston	Pierce	1,065	Washtucna	Adams	210
Sammamish	King	68,280	Waterville	Douglas	1,145
SeaTac	King	31,740	Waverly	Spokane	120
Seattle	King	779,200	Wenatchee	Chelan	35,850
Sedro-Woolley	Skagit	12,900	West Richland	Benton	17,840
Selah	Yakima	8,450	Westport	Grays Harbor	2,295
Sequim	Clallam	8,350	White Salmon	Klickitat	2,500
Shelton	Mason	10,420	Wilbur	Lincoln	895
Shoreline	King	61,120	Wilkeson	Pierce	495
Skykomish	King	165	Wilson Creek	Grant	205
Snohomish	Snohomish	10,330	Winlock	Lewis	1,835
Snoqualmie	King	14,500	Winthrop	Okanogan	580
Soap Lake	Grant	1,765	Woodinville	King	13,830
South Bend	Pacific	1,755	Woodland <i>part</i>	Clark	85
South Cle Elum	Kittitas	565	Woodland <i>part</i>	Cowlitz	6,485
South Prairie	Pierce	645	Woodway	Snohomish	1,340
Spangle	Spokane	280	Yacolt	Clark	1,670
Spokane	Spokane	232,700	Yakima	Yakima	98,650
Spokane Valley	Spokane	107,400	Yarrow Point	King	1,135
Sprague	Lincoln	500	Yelm	Thurston	10,770
Springdale	Stevens	290	Zillah	Yakima	3,215
St. John	Whitman	605			
Stanwood	Snohomish	8,585			
Starbuck	Columbia	120			
Steilacoom	Pierce	6,825			
Stevenson	Skamania	1,565			
Sultan	Snohomish	6,730			
Sumas	Whatcom	1,810			
Sumner	Pierce	10,800			
Sunnyside	Yakima	16,530			
Tacoma	Pierce	222,400			
Tekoa	Whitman	805			

Symbols: \* State certified special census: a population and housing count that meets all special census certification requirements.  
 # Informal census: a population and housing count that is considered accurate but does not meet all special census certification requirements.  
 + Informal count: a population count that is considered accurate but does not meet all special census certification requirements.

**Table 8. Housing units by structure type for cities, towns and counties: April 1, 2020, and April 1, 2023**

County Municipality	April 1, 2020, Structure Type				Estimated April 1, 2023, Structure Type			
	Total	1 Unit	2+ Units	MH/TR/Spec	Total	1 Unit	2+ Units	MH/TR/Spec
<b>Adams</b>	<b>6,735</b>	<b>4,225</b>	<b>916</b>	<b>1,594</b>	<b>6,975</b>	<b>4,428</b>	<b>938</b>	<b>1,609</b>
Unincorporated	2,862	1,396	116	1,350	2,910	1,427	120	1,363
Incorporated	3,873	2,829	800	244	4,065	3,001	818	246
Hatton	26	7	2	17	28	7	2	19
Lind	248	207	4	37	248	206	4	38
Othello	2,616	1,878	665	73	2,800	2,046	683	71
Ritzville	872	665	129	78	879	670	129	80
Washtucna	111	72	0	39	110	72	0	38
<b>Asotin</b>	<b>10,034</b>	<b>7,005</b>	<b>1,605</b>	<b>1,424</b>	<b>10,259</b>	<b>7,156</b>	<b>1,646</b>	<b>1,457</b>
Unincorporated	6,239	4,389	591	1,259	6,409	4,530	593	1,286
Incorporated	3,795	2,616	1,014	165	3,850	2,626	1,053	171
Asotin	508	369	78	61	518	376	78	64
Clarkston	3,287	2,247	936	104	3,332	2,250	975	107
<b>Benton</b>	<b>80,076</b>	<b>53,002</b>	<b>18,161</b>	<b>8,913</b>	<b>84,114</b>	<b>55,955</b>	<b>19,035</b>	<b>9,124</b>
Unincorporated	12,810	7,716	281	4,813	13,214	8,010	299	4,905
Incorporated	67,266	45,286	17,880	4,100	70,900	47,945	18,736	4,219
Benton City	1,381	1,002	99	280	1,516	1,106	109	301
Kennewick	32,242	20,381	9,891	1,970	33,473	21,155	10,302	2,016
Prosser	2,346	1,586	538	222	2,511	1,712	566	233
Richland	25,524	17,800	6,938	786	26,968	18,881	7,284	803
West Richland	5,773	4,517	414	842	6,432	5,091	475	866
<b>Chelan</b>	<b>37,267</b>	<b>26,127</b>	<b>6,775</b>	<b>4,365</b>	<b>38,968</b>	<b>27,180</b>	<b>7,381</b>	<b>4,407</b>
Unincorporated	17,092	12,888	744	3,460	18,097	13,658	938	3,501
Incorporated	20,175	13,239	6,031	905	20,871	13,522	6,443	906
Cashmere	1,226	838	337	51	1,284	844	389	51
Chelan	2,570	1,926	526	118	2,737	2,079	541	117
Entiat	575	349	39	187	598	368	41	189
Leavenworth	1,210	805	384	21	1,485	845	619	21
Wenatchee	14,594	9,321	4,745	528	14,767	9,386	4,853	528
<b>Clallam</b>	<b>37,930</b>	<b>26,753</b>	<b>4,402</b>	<b>6,775</b>	<b>38,608</b>	<b>27,249</b>	<b>4,456</b>	<b>6,903</b>
Unincorporated	22,587	16,610	611	5,366	22,948	16,847	647	5,454
Incorporated	15,343	10,143	3,791	1,409	15,660	10,402	3,809	1,449
Forks	1,407	681	210	516	1,433	698	210	525
Port Angeles	9,567	7,008	2,170	389	9,680	7,092	2,185	403
Sequim	4,369	2,454	1,411	504	4,547	2,612	1,414	521
<b>Clark</b>	<b>195,036</b>	<b>137,296</b>	<b>46,923</b>	<b>10,817</b>	<b>207,044</b>	<b>143,929</b>	<b>52,220</b>	<b>10,895</b>
Unincorporated	84,568	69,130	7,308	8,130	87,934	71,449	8,232	8,253
Incorporated	110,468	68,166	39,615	2,687	119,110	72,480	43,988	2,642
Battle Ground	7,449	5,916	1,280	253	7,945	6,389	1,302	254
Camas	9,234	8,137	1,062	35	9,833	8,661	1,139	33
La Center	1,248	1,095	78	75	1,451	1,291	85	75
Ridgefield	3,688	3,394	237	57	5,753	5,100	596	57
Vancouver	81,809	44,042	35,904	1,863	86,878	45,247	39,808	1,823
Washougal	6,444	5,078	1,037	329	6,655	5,284	1,041	330
Woodland (part)	55	24	0	31	54	26	0	28
Yacolt	541	480	17	44	541	482	17	42
<b>Columbia</b>	<b>2,190</b>	<b>1,627</b>	<b>178</b>	<b>385</b>	<b>2,227</b>	<b>1,636</b>	<b>181</b>	<b>410</b>
Unincorporated	884	639	6	239	907	655	6	246
Incorporated	1,306	988	172	146	1,320	981	175	164
Dayton	1,227	941	172	114	1,233	938	175	120
Starbuck	79	47	0	32	87	43	0	44

**Table 8. Housing units by structure type for cities, towns and counties: April 1, 2020, and April 1, 2023 (continued)**

County Municipality	April 1, 2020, Structure Type				Estimated April 1, 2023, Structure Type			
	Total	1 Unit	2+ Units	MH/TR/Spec	Total	1 Unit	2+ Units	MH/TR/Spec
<b>Cowlitz</b>	<b>45,424</b>	<b>31,500</b>	<b>7,989</b>	<b>5,935</b>	<b>46,536</b>	<b>32,292</b>	<b>8,132</b>	<b>6,112</b>
Unincorporated	19,195	14,260	637	4,298	20,019	14,909	674	4,436
Incorporated	26,229	17,240	7,352	1,637	26,517	17,383	7,458	1,676
Castle Rock	988	693	184	111	993	697	185	111
Kalama	1,272	861	215	196	1,328	897	229	202
Kelso	5,217	3,384	1,429	404	5,240	3,382	1,439	419
Longview	16,478	10,875	4,910	693	16,670	10,969	4,990	711
Woodland (part)	2,274	1,427	614	233	2,286	1,438	615	233
<b>Douglas</b>	<b>17,318</b>	<b>11,513</b>	<b>2,532</b>	<b>3,273</b>	<b>18,183</b>	<b>12,192</b>	<b>2,703</b>	<b>3,288</b>
Unincorporated	9,949	6,961	606	2,382	10,651	7,497	755	2,399
Incorporated	7,369	4,552	1,926	891	7,532	4,695	1,948	889
Bridgeport	709	281	112	316	715	285	112	318
Coulee Dam (part)	96	96	0	0	96	96	0	0
East Wenatchee	5,479	3,403	1,768	308	5,509	3,413	1,787	309
Mansfield	166	110	22	34	166	110	22	34
Rock Island	439	298	4	137	561	420	6	135
Waterville	480	364	20	96	485	371	21	93
<b>Ferry</b>	<b>4,059</b>	<b>2,753</b>	<b>158</b>	<b>1,148</b>	<b>4,150</b>	<b>2,831</b>	<b>158</b>	<b>1,161</b>
Unincorporated	3,528	2,488	44	996	3,615	2,562	44	1,009
Incorporated	531	265	114	152	535	269	114	152
Republic	531	265	114	152	535	269	114	152
<b>Franklin</b>	<b>29,740</b>	<b>21,614</b>	<b>4,857</b>	<b>3,269</b>	<b>31,439</b>	<b>22,849</b>	<b>5,243</b>	<b>3,347</b>
Unincorporated	4,196	2,692	113	1,391	4,319	2,772	130	1,417
Incorporated	25,544	18,922	4,744	1,878	27,120	20,077	5,113	1,930
Connell	1,021	557	217	247	1,047	576	219	252
Kahlotus	70	37	2	31	67	37	2	28
Mesa	119	44	0	75	121	46	0	75
Pasco	24,334	18,284	4,525	1,525	25,885	19,418	4,892	1,575
<b>Garfield</b>	<b>1,194</b>	<b>871</b>	<b>59</b>	<b>264</b>	<b>1,209</b>	<b>873</b>	<b>60</b>	<b>276</b>
Unincorporated	481	345	2	134	491	348	3	140
Incorporated	713	526	57	130	718	525	57	136
Pomeroy	713	526	57	130	718	525	57	136
<b>Grant</b>	<b>38,635</b>	<b>21,642</b>	<b>5,871</b>	<b>11,122</b>	<b>40,592</b>	<b>23,038</b>	<b>6,155</b>	<b>11,399</b>
Unincorporated	17,687	9,052	947	7,688	18,529	9,683	948	7,898
Incorporated	20,948	12,590	4,924	3,434	22,063	13,355	5,207	3,501
Coulee City	323	202	45	76	331	207	46	78
Coulee Dam (part)	0	0	0	0	0	0	0	0
Electric City	487	380	29	78	491	381	31	79
Ephrata	3,342	2,386	638	318	3,443	2,467	656	320
George	248	59	69	120	276	86	70	120
Grand Coulee	551	326	86	139	547	325	86	136
Hartline	77	68	0	9	78	68	0	10
Krupp	29	24	0	5	27	24	0	3
Mattawa	819	150	191	478	878	151	243	484
Moses Lake	10,257	6,287	2,829	1,141	10,804	6,634	2,972	1,198
Quincy	2,431	1,514	588	329	2,630	1,701	601	328
Royal City	520	237	116	167	569	274	128	167
Soap Lake	940	510	187	243	991	552	191	248
Warden	811	365	146	300	884	402	183	299
Wilson Creek	113	82	0	31	114	83	0	31
<b>Grays Harbor</b>	<b>36,058</b>	<b>25,832</b>	<b>4,792</b>	<b>5,434</b>	<b>37,298</b>	<b>26,831</b>	<b>4,849</b>	<b>5,618</b>
Unincorporated	12,921	9,000	283	3,638	13,282	9,315	285	3,682
Incorporated	23,137	16,832	4,509	1,796	24,016	17,516	4,564	1,936

**Table 8. Housing units by structure type for cities, towns and counties: April 1, 2020, and April 1, 2023 (continued)**

County Municipality	April 1, 2020, Structure Type				Estimated April 1, 2023, Structure Type			
	Total	1 Unit	2+ Units	MH/TR/Spec	Total	1 Unit	2+ Units	MH/TR/Spec
<b>Grays Harbor</b> <i>continued</i>								
Aberdeen	7,236	4,823	2,045	368	7,271	4,840	2,049	382
Cosmopolis	712	601	41	70	728	603	47	78
Elma	1,381	901	303	177	1,402	912	303	187
Hoquiam	3,908	2,866	894	148	3,930	2,865	894	171
McCleary	823	706	95	22	853	736	95	22
Montesano	1,786	1,356	344	86	1,799	1,366	346	87
Oakville	287	206	0	81	290	211	0	79
Ocean Shores	5,518	4,412	431	675	6,188	4,966	470	752
Westport	1,486	961	356	169	1,555	1,017	360	178
<b>Island</b>	<b>41,922</b>	<b>32,603</b>	<b>4,565</b>	<b>4,754</b>	<b>42,678</b>	<b>33,153</b>	<b>4,681</b>	<b>4,844</b>
Unincorporated	30,106	25,271	785	4,050	30,747	25,765	822	4,160
Incorporated	11,816	7,332	3,780	704	11,931	7,388	3,859	684
Coupeville	1,016	688	200	128	1,032	695	208	129
Langley	743	526	217	0	754	533	221	0
Oak Harbor	10,057	6,118	3,363	576	10,145	6,160	3,430	555
<b>Jefferson</b>	<b>19,087</b>	<b>14,406</b>	<b>1,453</b>	<b>3,228</b>	<b>19,481</b>	<b>14,699</b>	<b>1,481</b>	<b>3,301</b>
Unincorporated	13,395	10,109	363	2,923	13,677	10,327	369	2,981
Incorporated	5,692	4,279	1,090	305	5,804	4,372	1,112	320
Port Townsend	5,692	4,279	1,090	305	5,804	4,372	1,112	320
<b>King</b>	<b>969,234</b>	<b>516,685</b>	<b>434,586</b>	<b>17,963</b>	<b>1,020,823</b>	<b>522,651</b>	<b>480,294</b>	<b>17,878</b>
Unincorporated	92,938	79,169	7,960	5,809	94,329	80,046	8,506	5,777
Incorporated	876,296	437,516	426,626	12,154	926,494	442,605	471,788	12,101
Algona	1,048	824	43	181	1,061	833	47	181
Auburn (part)	28,049	15,313	10,065	2,671	28,720	15,468	10,575	2,677
Beaux Arts Village	118	118	0	0	118	118	0	0
Bellevue	64,688	32,823	31,860	5	66,315	32,929	33,381	5
Black Diamond	1,841	1,569	57	215	2,761	2,276	263	222
Bothell (part)	12,682	5,514	6,137	1,031	12,901	5,587	6,283	1,031
Burien	20,785	12,736	8,038	11	21,065	12,796	8,258	11
Carnation	814	704	64	46	854	718	90	46
Clyde Hill	1,098	1,086	12	0	1,099	1,083	16	0
Covington	7,149	6,171	904	74	7,513	6,446	993	74
Des Moines	13,222	7,789	5,225	208	13,485	7,843	5,439	203
Duvall	2,778	2,411	182	185	3,009	2,440	382	187
Enumclaw (part)	5,365	3,536	1,341	488	5,609	3,767	1,346	496
Federal Way	37,677	20,529	15,818	1,330	38,079	20,647	16,068	1,364
Hunts Point	185	185	0	0	186	186	0	0
Issaquah	17,303	8,059	9,242	2	18,000	8,222	9,776	2
Kenmore	9,589	6,598	2,704	287	9,797	6,679	2,827	291
Kent	49,157	27,352	19,923	1,882	50,362	27,760	20,737	1,865
Kirkland	40,019	22,020	17,945	54	42,956	22,337	20,567	52
Lake Forest Park	5,565	4,653	908	4	5,589	4,658	927	4
Maple Valley	9,435	8,070	814	551	9,948	8,481	916	551
Medina	1,131	1,131	0	0	1,140	1,138	2	0
Mercer Island	10,570	7,431	3,139	0	10,605	7,451	3,154	0
Milton (part)	687	338	222	127	688	335	222	131
Newcastle	5,471	3,368	2,091	12	5,830	3,408	2,410	12
Normandy Park	2,807	2,231	574	2	2,844	2,243	598	3
North Bend	2,951	2,097	671	183	3,219	2,364	678	177
Pacific (part)	2,466	1,478	839	149	2,478	1,490	841	147
Redmond	31,738	13,706	17,689	343	34,328	13,848	20,137	343
Renton	43,362	22,988	19,382	992	43,921	23,209	19,724	988
Sammamish	22,544	19,877	2,618	49	22,867	20,162	2,657	48

**Table 8. Housing units by structure type for cities, towns and counties: April 1, 2020, and April 1, 2023 (continued)**

County Municipality	April 1, 2020, Structure Type				Estimated April 1, 2023, Structure Type			
	Total	1 Unit	2+ Units	MH/TR/Spec	Total	1 Unit	2+ Units	MH/TR/Spec
<b>King</b> <i>continued</i>								
SeaTac	11,774	5,679	5,480	615	11,825	5,700	5,590	535
Seattle	368,308	141,304	226,863	141	400,666	142,079	258,446	141
Shoreline	24,043	16,314	7,656	73	25,604	16,343	9,188	73
Skykomish	154	133	7	14	155	134	7	14
Snoqualmie	4,674	4,005	669	0	4,874	4,009	865	0
Tukwila	8,742	3,694	4,823	225	9,194	3,720	5,251	223
Woodinville	5,895	3,275	2,616	4	6,414	3,289	3,121	4
Yarrow Point	412	407	5	0	415	409	6	0
<b>Kitsap</b>	<b>113,248</b>	<b>80,518</b>	<b>21,982</b>	<b>10,748</b>	<b>117,213</b>	<b>83,117</b>	<b>23,192</b>	<b>10,904</b>
Unincorporated	72,321	54,065	8,612	9,644	73,962	55,334	8,811	9,817
Incorporated	40,927	26,453	13,370	1,104	43,251	27,783	14,381	1,087
Bainbridge Island	11,251	8,898	1,984	369	11,437	9,027	2,044	366
Bremerton	18,351	9,924	8,070	357	19,399	10,516	8,543	340
Port Orchard	6,209	4,152	1,906	151	7,070	4,652	2,264	154
Poulsbo	5,116	3,479	1,410	227	5,345	3,588	1,530	227
<b>Kittitas</b>	<b>23,743</b>	<b>15,731</b>	<b>5,222</b>	<b>2,790</b>	<b>24,807</b>	<b>16,577</b>	<b>5,430</b>	<b>2,800</b>
Unincorporated	12,242	9,619	536	2,087	12,811	10,152	534	2,125
Incorporated	11,501	6,112	4,686	703	11,996	6,425	4,896	675
Cle Elum	1,116	859	188	69	1,176	893	212	71
Ellensburg	8,924	4,234	4,376	314	9,342	4,497	4,562	283
Kittitas	591	281	73	237	592	282	73	237
Roslyn	611	568	29	14	621	578	29	14
South Cle Elum	259	170	20	69	265	175	20	70
<b>Klickitat</b>	<b>10,533</b>	<b>6,690</b>	<b>877</b>	<b>2,966</b>	<b>11,032</b>	<b>7,073</b>	<b>942</b>	<b>3,017</b>
Unincorporated	7,317	4,688	171	2,458	7,758	5,033	206	2,519
Incorporated	3,216	2,002	706	508	3,274	2,040	736	498
Bingen	337	223	74	40	340	225	74	41
Goldendale	1,665	942	366	357	1,691	951	375	365
White Salmon	1,214	837	266	111	1,243	864	287	92
<b>Lewis</b>	<b>35,412</b>	<b>23,192</b>	<b>4,283</b>	<b>7,937</b>	<b>36,617</b>	<b>23,873</b>	<b>4,470</b>	<b>8,274</b>
Unincorporated	21,747	14,567	553	6,627	22,449	14,995	575	6,879
Incorporated	13,665	8,625	3,730	1,310	14,168	8,878	3,895	1,395
Centralia	7,594	4,646	2,356	592	7,772	4,701	2,436	635
Chehalis	3,139	2,023	1,090	26	3,136	2,016	1,091	29
Morton	506	365	68	73	537	390	69	78
Mossyrock	323	144	26	153	334	152	26	156
Napavine	697	496	60	141	758	526	86	146
Pe Ell	283	204	15	64	290	206	15	69
Toledo	302	188	58	56	318	201	57	60
Vader	256	149	4	103	269	154	6	109
Winlock	565	410	53	102	754	532	109	113
<b>Lincoln</b>	<b>5,732</b>	<b>4,123</b>	<b>207</b>	<b>1,402</b>	<b>5,954</b>	<b>4,268</b>	<b>227</b>	<b>1,459</b>
Unincorporated	3,121	2,129	15	977	3,302	2,259	23	1,020
Incorporated	2,611	1,994	192	425	2,652	2,009	204	439
Almira	151	133	0	18	151	133	0	18
Creston	119	76	7	36	125	77	7	41
Davenport	744	508	115	121	762	512	126	124
Harrington	211	161	16	34	216	161	16	39
Odessa	441	404	4	33	441	404	4	33
Reardan	259	180	19	60	267	186	19	62
Sprague	230	170	4	56	233	172	4	57
Wilbur	456	362	27	67	457	364	28	65



**Table 8. Housing units by structure type for cities, towns and counties: April 1, 2020, and April 1, 2023 (continued)**

County Municipality	April 1, 2020, Structure Type				Estimated April 1, 2023, Structure Type			
	Total	1 Unit	2+ Units	MH/TR/Spec	Total	1 Unit	2+ Units	MH/TR/Spec
<b>Mason</b>	<b>33,269</b>	<b>23,496</b>	<b>1,400</b>	<b>8,373</b>	<b>34,159</b>	<b>24,091</b>	<b>1,508</b>	<b>8,560</b>
Unincorporated	29,382	20,819	591	7,972	30,251	21,401	695	8,155
Incorporated	3,887	2,677	809	401	3,908	2,690	813	405
Shelton	3,887	2,677	809	401	3,908	2,690	813	405
<b>Okanogan</b>	<b>21,720</b>	<b>14,945</b>	<b>1,709</b>	<b>5,066</b>	<b>22,310</b>	<b>15,391</b>	<b>1,788</b>	<b>5,131</b>
Unincorporated	14,315	10,043	300	3,972	14,721	10,379	306	4,036
Incorporated	7,405	4,902	1,409	1,094	7,589	5,012	1,482	1,095
Brewster	715	370	219	126	719	381	221	117
Conconully	179	129	5	45	179	129	5	45
Coulee Dam (part)	433	380	48	5	432	379	48	5
Elmer City	122	74	15	33	125	76	16	33
Nespelem	76	33	2	41	77	33	2	42
Okanogan	1,063	744	165	154	1,074	750	165	159
Omak	2,222	1,496	498	228	2,292	1,502	562	228
Oroville	820	548	183	89	826	550	183	93
Pateros	250	190	16	44	252	192	16	44
Riverside	152	87	0	65	151	86	0	65
Tonasket	520	317	130	73	517	316	130	71
Twisp	511	307	76	128	552	347	77	128
Winthrop	342	227	52	63	393	271	57	65
<b>Pacific</b>	<b>16,034</b>	<b>10,826</b>	<b>1,135</b>	<b>4,073</b>	<b>16,429</b>	<b>11,120</b>	<b>1,154</b>	<b>4,155</b>
Unincorporated	11,930	8,094	293	3,543	12,245	8,335	294	3,616
Incorporated	4,104	2,732	842	530	4,184	2,785	860	539
Ilwaco	615	452	92	71	628	465	92	71
Long Beach	1,386	850	345	191	1,426	874	361	191
Raymond	1,359	883	292	184	1,374	895	294	185
South Bend	744	547	113	84	756	551	113	92
<b>Pend Oreille</b>	<b>7,938</b>	<b>5,490</b>	<b>405</b>	<b>2,043</b>	<b>8,171</b>	<b>5,673</b>	<b>411</b>	<b>2,087</b>
Unincorporated	6,394	4,496	40	1,858	6,613	4,670	41	1,902
Incorporated	1,544	994	365	185	1,558	1,003	370	185
Cusick	92	75	2	15	102	81	2	19
Ione	226	147	19	60	226	147	19	60
Metaline	91	68	2	21	90	67	2	21
Metaline Falls	203	84	110	9	204	84	110	10
Newport	932	620	232	80	936	624	237	75
<b>Pierce</b>	<b>359,489</b>	<b>240,325</b>	<b>92,200</b>	<b>26,964</b>	<b>372,113</b>	<b>247,167</b>	<b>97,498</b>	<b>27,448</b>
Unincorporated	156,453	114,729	18,292	23,432	163,481	119,613	20,112	23,756
Incorporated	203,036	125,596	73,908	3,532	208,632	127,554	77,386	3,692
Auburn (part)	3,898	1,733	2,165	0	3,912	1,747	2,165	0
Bonney Lake	7,605	6,376	766	463	8,260	6,524	1,277	459
Buckley	1,956	1,589	280	87	2,159	1,791	281	87
Carbonado	244	220	0	24	248	224	0	24
DuPont	3,791	2,559	1,231	1	3,801	2,569	1,231	1
Eatonville	1,127	928	130	69	1,151	946	134	71
Edgewood	5,125	3,977	956	192	5,782	4,245	1,345	192
Enumclaw (part)	0	0	0	0	0	0	0	0
Fife	4,326	1,793	2,439	94	4,399	1,818	2,489	92
Fircrest	2,926	2,233	693	0	2,965	2,237	728	0
Gig Harbor	5,642	3,330	2,178	134	6,132	3,811	2,189	132
Lakewood	26,999	13,577	11,971	1,451	27,320	13,675	12,111	1,534
Milton (part)	2,963	1,731	1,184	48	2,972	1,735	1,189	48
Orting	2,999	2,679	151	169	3,034	2,712	153	169
Pacific (part)	19	12	0	7	19	12	0	7
Puyallup	18,106	10,642	7,316	148	18,314	10,864	7,342	108

**Table 8. Housing units by structure type for cities, towns and counties: April 1, 2020, and April 1, 2023 (continued)**

County Municipality	April 1, 2020, Structure Type				Estimated April 1, 2023, Structure Type			
	Total	1 Unit	2+ Units	MH/TR/Spec	Total	1 Unit	2+ Units	MH/TR/Spec
<b>Pierce</b> <i>continued</i>								
Roy	315	254	16	45	314	254	16	44
Ruston	517	417	100	0	521	421	100	0
South Prairie	149	131	0	18	272	131	0	141
Steilacoom	2,919	2,108	811	0	2,963	2,151	812	0
Sumner	4,492	2,532	1,701	259	4,567	2,580	1,727	260
Tacoma	92,309	57,630	34,460	219	94,531	57,912	36,400	219
University Place	14,427	8,976	5,360	91	14,815	9,027	5,697	91
Wilkeson	182	169	0	13	181	168	0	13
<b>San Juan</b>	<b>13,772</b>	<b>11,369</b>	<b>987</b>	<b>1,416</b>	<b>14,254</b>	<b>11,720</b>	<b>1,096</b>	<b>1,438</b>
Unincorporated	12,318	10,646	412	1,260	12,735	10,957	498	1,280
Incorporated	1,454	723	575	156	1,519	763	598	158
Friday Harbor	1,454	723	575	156	1,519	763	598	158
<b>Skagit</b>	<b>55,744</b>	<b>40,583</b>	<b>8,556</b>	<b>6,605</b>	<b>57,047</b>	<b>41,135</b>	<b>9,232</b>	<b>6,680</b>
Unincorporated	24,252	18,814	551	4,887	24,492	18,967	592	4,933
Incorporated	31,492	21,769	8,005	1,718	32,555	22,168	8,640	1,747
Anacortes	8,395	6,728	1,484	183	8,611	6,844	1,568	199
Burlington	3,645	2,120	1,440	85	4,010	2,126	1,800	84
Concrete	375	272	73	30	379	276	73	30
Hamilton	131	89	0	42	129	88	0	41
La Conner	556	408	128	20	570	414	136	20
Lyman	174	125	3	46	174	125	3	46
Mount Vernon	13,457	8,953	3,665	839	13,631	9,075	3,715	841
Sedro-Woolley	4,759	3,074	1,212	473	5,051	3,220	1,345	486
<b>Skamania</b>	<b>5,794</b>	<b>3,928</b>	<b>374</b>	<b>1,492</b>	<b>6,111</b>	<b>4,183</b>	<b>394</b>	<b>1,534</b>
Unincorporated	4,595	3,130	110	1,355	4,851	3,331	122	1,398
Incorporated	1,199	798	264	137	1,260	852	272	136
North Bonneville	452	276	98	78	457	280	98	79
Stevenson	747	522	166	59	803	572	174	57
<b>Snohomish</b>	<b>321,523</b>	<b>211,762</b>	<b>90,200</b>	<b>19,561</b>	<b>336,690</b>	<b>217,398</b>	<b>99,697</b>	<b>19,595</b>
Unincorporated	136,975	98,750	24,585	13,640	140,003	99,768	26,521	13,714
Incorporated	184,548	113,012	65,615	5,921	196,687	117,630	73,176	5,881
Arlington	7,751	4,741	2,417	593	8,702	4,767	3,333	602
Bothell (part)	7,456	5,048	1,612	796	7,923	5,260	1,872	791
Brier	2,413	2,352	32	29	2,435	2,370	36	29
Darrington	648	490	35	123	666	505	37	124
Edmonds	19,305	12,051	7,222	32	19,599	12,114	7,453	32
Everett	47,193	22,100	23,931	1,162	49,053	22,246	25,646	1,161
Gold Bar	892	576	28	288	853	592	28	233
Granite Falls	1,594	1,188	323	83	1,713	1,294	336	83
Index	100	97	0	3	100	97	0	3
Lake Stevens	12,367	10,106	1,869	392	14,516	11,783	2,339	394
Lynnwood	16,212	7,527	8,125	560	17,403	7,611	9,232	560
Marysville	25,723	19,065	5,446	1,212	26,923	19,867	5,829	1,227
Mill Creek	9,068	5,471	3,590	7	9,449	5,497	3,945	7
Monroe	6,228	4,487	1,658	83	6,997	4,938	1,979	80
Mountlake Terrace	9,202	5,488	3,612	102	10,798	5,643	5,054	101
Mukilteo	8,711	5,622	3,082	7	8,739	5,627	3,105	7
Snohomish	4,347	2,646	1,645	56	4,521	2,707	1,759	55
Stanwood	2,979	2,175	800	4	3,367	2,378	985	4
Sultan	1,883	1,306	188	389	2,445	1,849	208	388
Woodway	476	476	0	0	485	485	0	0

**Table 8. Housing units by structure type for cities, towns and counties: April 1, 2020, and April 1, 2023 (continued)**

County Municipality	April 1, 2020, Structure Type				Estimated April 1, 2023, Structure Type			
	Total	1 Unit	2+ Units	MH/TR/Spec	Total	1 Unit	2+ Units	MH/TR/Spec
<b>Spokane</b>	<b>224,019</b>	<b>147,985</b>	<b>62,002</b>	<b>14,032</b>	<b>231,908</b>	<b>151,616</b>	<b>66,084</b>	<b>14,208</b>
Unincorporated	61,193	45,289	6,309	9,595	63,405	46,915	6,901	9,589
Incorporated	162,826	102,696	55,693	4,437	168,503	104,701	59,183	4,619
Airway Heights	3,626	1,210	1,881	535	3,993	1,391	2,062	540
Cheney	5,354	1,908	3,314	132	5,542	1,940	3,471	131
Deer Park	1,901	1,319	410	172	2,161	1,490	494	177
Fairfield	228	175	9	44	236	178	9	49
Latah	88	79	0	9	88	79	0	9
Liberty Lake	4,916	3,202	1,582	132	5,449	3,645	1,672	132
Medical Lake	1,826	1,271	422	133	1,849	1,275	441	133
Millwood	821	686	121	14	845	689	142	14
Rockford	195	133	0	62	213	139	0	74
Spangle	127	85	0	42	127	85	0	42
Spokane	99,938	65,430	32,955	1,553	102,102	66,118	34,351	1,633
Spokane Valley	43,751	27,172	14,999	1,580	45,843	27,646	16,541	1,656
Waverly	55	26	0	29	55	26	0	29
<b>Stevens</b>	<b>22,242</b>	<b>15,365</b>	<b>1,190</b>	<b>5,687</b>	<b>22,754</b>	<b>15,696</b>	<b>1,208</b>	<b>5,850</b>
Unincorporated	17,624	12,328	189	5,107	18,051	12,598	189	5,264
Incorporated	4,618	3,037	1,001	580	4,703	3,098	1,019	586
Chewelah	1,220	788	235	197	1,280	830	244	206
Colville	2,278	1,487	586	205	2,288	1,492	594	202
Kettle Falls	770	519	172	79	774	522	173	79
Marcus	87	60	0	27	87	60	0	27
Northport	156	130	8	18	156	130	8	18
Springdale	107	53	0	54	118	64	0	54
<b>Thurston</b>	<b>121,438</b>	<b>83,384</b>	<b>23,990</b>	<b>14,064</b>	<b>126,070</b>	<b>85,061</b>	<b>26,677</b>	<b>14,332</b>
Unincorporated	57,584	43,384	3,377	10,823	57,433	43,299	3,283	10,851
Incorporated	63,854	40,000	20,613	3,241	68,637	41,762	23,394	3,481
Bucoda	241	199	2	40	249	202	2	45
Lacey	22,039	15,095	6,000	944	24,963	16,161	7,738	1,064
Olympia	25,642	14,319	10,553	770	26,466	14,439	11,212	815
Rainier	850	698	34	118	940	718	104	118
Tenino	780	544	83	153	854	618	83	153
Tumwater	10,847	6,527	3,223	1,097	11,661	6,964	3,530	1,167
Yelm	3,455	2,618	718	119	3,504	2,660	725	119
<b>Wahkiakum</b>	<b>2,189</b>	<b>1,522</b>	<b>83</b>	<b>584</b>	<b>2,280</b>	<b>1,581</b>	<b>94</b>	<b>605</b>
Unincorporated	1,881	1,308	2	571	1,962	1,357	13	592
Incorporated	308	214	81	13	318	224	81	13
Cathlamet	308	214	81	13	318	224	81	13
<b>Walla Walla</b>	<b>24,971</b>	<b>17,214</b>	<b>5,038</b>	<b>2,719</b>	<b>25,712</b>	<b>17,521</b>	<b>5,435</b>	<b>2,756</b>
Unincorporated	6,542	4,897	204	1,441	6,671	4,973	234	1,464
Incorporated	18,429	12,317	4,834	1,278	19,041	12,548	5,201	1,292
College Place	4,176	2,657	1,135	384	4,279	2,710	1,185	384
Prescott	152	51	2	99	153	52	2	99
Waitsburg	530	343	20	167	547	346	32	169
Walla Walla	13,571	9,266	3,677	628	14,062	9,440	3,982	640
<b>Whatcom</b>	<b>100,064</b>	<b>62,407</b>	<b>27,092</b>	<b>10,565</b>	<b>104,657</b>	<b>64,385</b>	<b>29,615</b>	<b>10,657</b>
Unincorporated	42,163	30,829	2,402	8,932	42,971	31,568	2,418	8,985
Incorporated	57,901	31,578	24,690	1,633	61,686	32,817	27,197	1,672
Bellingham	41,267	20,133	20,209	925	43,736	20,480	22,326	930
Blaine	2,744	1,911	777	56	2,958	2,075	823	60
Everson	996	665	253	78	1,089	746	262	81
Ferndale	5,553	3,762	1,403	388	6,065	4,149	1,504	412

**Table 8. Housing units by structure type for cities, towns and counties: April 1, 2020, and April 1, 2023 (continued)**

County Municipality	April 1, 2020, Structure Type				Estimated April 1, 2023, Structure Type			
	Total	1 Unit	2+ Units	MH/TR/Spec	Total	1 Unit	2+ Units	MH/TR/Spec
<b>Whatcom continued</b>								
Lynden	6,156	4,289	1,783	84	6,553	4,486	1,981	86
Nooksack	510	417	51	42	547	445	59	43
Sumas	675	401	214	60	738	436	242	60
<b>Whitman</b>	<b>20,922</b>	<b>9,870</b>	<b>9,340</b>	<b>1,712</b>	<b>21,837</b>	<b>10,102</b>	<b>9,984</b>	<b>1,751</b>
Unincorporated	2,754	2,321	39	394	2,762	2,317	40	405
Incorporated	18,168	7,549	9,301	1,318	19,075	7,785	9,944	1,346
Albion	283	128	14	141	280	128	14	138
Colfax	1,434	879	426	129	1,438	886	428	124
Colton	175	146	8	21	180	152	8	20
Endicott	164	133	0	31	164	133	0	31
Farmington	69	56	0	13	72	59	0	13
Garfield	278	178	37	63	280	180	37	63
LaCrosse	169	126	3	40	167	126	3	38
Lamont	40	28	0	12	42	30	0	12
Malden	101	88	0	13	79	35	0	44
Oakesdale	187	152	0	35	190	154	0	36
Palouse	513	384	30	99	531	403	30	98
Pullman	13,645	4,436	8,686	523	14,542	4,674	9,327	541
Rosalia	270	195	21	54	266	197	21	48
St. John	310	223	34	53	312	224	34	54
Tekoa	366	279	42	45	363	280	42	41
Uniontown	164	118	0	46	169	124	0	45
<b>Yakima</b>	<b>90,504</b>	<b>59,004</b>	<b>17,797</b>	<b>13,703</b>	<b>92,931</b>	<b>60,162</b>	<b>18,922</b>	<b>13,847</b>
Unincorporated	31,026	21,218	1,075	8,733	31,550	21,439	1,264	8,847
Incorporated	59,478	37,786	16,722	4,970	61,381	38,723	17,658	5,000
Grandview	3,275	2,200	593	482	3,447	2,370	597	480
Granger	946	553	185	208	1,001	593	198	210
Harrah	188	110	21	57	187	109	21	57
Mabton	558	374	85	99	560	374	87	99
Moxee	1,360	1,164	133	63	1,559	1,350	147	62
Naches	393	268	72	53	414	273	88	53
Selah	3,072	2,224	816	32	3,247	2,334	881	32
Sunnyside	4,845	2,893	1,266	686	4,926	2,940	1,285	701
Tieton	452	274	59	119	526	295	112	119
Toppenish	2,453	1,712	612	129	2,475	1,711	636	128
Union Gap	2,275	1,304	203	768	2,326	1,308	214	804
Wapato	1,322	949	290	83	1,327	951	292	84
Yakima	37,192	22,958	12,162	2,072	38,218	23,308	12,857	2,053
Zillah	1,147	803	225	119	1,168	807	243	118
<b>State</b>	<b>3,202,239</b>	<b>2,025,183</b>	<b>921,891</b>	<b>255,165</b>	<b>3,341,640</b>	<b>2,077,852</b>	<b>1,004,671</b>	<b>259,117</b>
Unincorporated	1,085,567	808,278	90,055	187,234	1,116,557	829,460	97,043	190,054
Incorporated	2,116,672	1,216,905	831,836	67,931	2,225,083	1,248,392	907,628	69,063

- Notes:
- The 2020 counts for total housing units represent federal census counts, special city census counts or OFM adjusted counts that control for annexations from Jan. 2, 2020, through April 1, 2020.
  - Estimates of housing units by structure type for 2020 are developed using an allocation procedure based on Census 2020 Summary File 1 data, housing completion data reported by cities and counties (2000–19), annexation census data (2000–19) and Census 2000 Summary File 3 data. The resulting 2020 estimates maintain the 2020 census counts of total housing units, occupied housing units and population in housing units.
  - Housing unit estimates (post-2020) are developed using housing completion data reported by cities and counties and annexation census data.
  - Housing unit estimates (post-2020) are revised in cases where more accurate data become available.
  - Abbreviation: MH/TR/Spec – mobile homes, trailers and special housing.







**Table 9. Annexations, incorporations and other municipal boundary changes approved by OFM (continued)**

<b>County Municipality</b>	<b>Boundary Changes: April 2, 2020 – April 1, 2023</b>				<b>Boundary Changes: April 2, 2022 – April 1, 2023</b>			
	<b>Area (sq mi)</b>	<b>Housing Units</b>		<b>Pop. Total</b>	<b>Area (sq mi)</b>	<b>Housing Units</b>		<b>Pop. Total</b>
		<b>Total</b>	<b>Occ.</b>			<b>Total</b>	<b>Occ.</b>	
<b>Lewis</b> <i>continued</i>								
Pe Ell	0	0	0	0	0	0	0	0
Toledo	0	0	0	0	0	0	0	0
Vader	0	0	0	0	0	0	0	0
Winlock	0	0	0	0	0	0	0	0
<b>Lincoln</b>	<b>0</b>	<b>0</b>	<b>0</b>	<b>0</b>	<b>0</b>	<b>0</b>	<b>0</b>	<b>0</b>
Almira	0	0	0	0	0	0	0	0
Creston	0	0	0	0	0	0	0	0
Davenport	0	0	0	0	0	0	0	0
Harrington	0	0	0	0	0	0	0	0
Odessa	0	0	0	0	0	0	0	0
Rearдан	0	0	0	0	0	0	0	0
Sprague	0	0	0	0	0	0	0	0
Wilbur	0	0	0	0	0	0	0	0
<b>Mason</b>	<b>0</b>	<b>0</b>	<b>0</b>	<b>0</b>	<b>0</b>	<b>0</b>	<b>0</b>	<b>0</b>
Shelton	0	0	0	0	0	0	0	0
<b>Okanogan</b>	<b>-0.102</b>	<b>6</b>	<b>5</b>	<b>13</b>	<b>-0.107</b>	<b>2</b>	<b>2</b>	<b>6</b>
Brewster	0	0	0	0	0	0	0	0
Conconully	0	0	0	0	0	0	0	0
Coulee Dam <i>part</i>	0	0	0	0	0	0	0	0
Elmer City	0	0	0	0	0	0	0	0
Nespelem	0	0	0	0	0	0	0	0
Okanogan	0.002	1	1	2	0	0	0	0
Omak	-0.107	2	2	6	-0.107	2	2	6
Oroville	0	0	0	0	0	0	0	0
Pateros	0	0	0	0	0	0	0	0
Riverside	0	0	0	0	0	0	0	0
Tonasket	0	0	0	0	0	0	0	0
Twisp	0	0	0	0	0	0	0	0
Winthrop	0.003	3	2	5	0	0	0	0
<b>Pacific</b>	<b>0.092</b>	<b>0</b>	<b>0</b>	<b>0</b>	<b>0</b>	<b>0</b>	<b>0</b>	<b>0</b>
Ilwaco	0	0	0	0	0	0	0	0
Long Beach	0	0	0	0	0	0	0	0
Raymond	0.092	0	0	0	0	0	0	0
South Bend	0	0	0	0	0	0	0	0
<b>Pend Oreille</b>	<b>0.008</b>	<b>0</b>	<b>0</b>	<b>0</b>	<b>0</b>	<b>0</b>	<b>0</b>	<b>0</b>
Cusick	0	0	0	0	0	0	0	0
Ione	0	0	0	0	0	0	0	0
Metaline	0	0	0	0	0	0	0	0
Metaline Falls	0	0	0	0	0	0	0	0
Newport	0.008	0	0	0	0	0	0	0
<b>Pierce</b>	<b>0.283</b>	<b>29</b>	<b>24</b>	<b>48</b>	<b>0.074</b>	<b>8</b>	<b>3</b>	<b>7</b>
Auburn <i>part</i>	0	0	0	0	0	0	0	0
Bonney Lake	0	0	0	0	0	0	0	0
Buckley	0	0	0	0	0	0	0	0
Carbonado	0	0	0	0	0	0	0	0
DuPont	0	0	0	0	0	0	0	0
Eatonville	0	0	0	0	0	0	0	0
Edgewood	0	0	0	0	0	0	0	0
Enumclaw <i>part</i>	0	0	0	0	0	0	0	0
Fife	0.074	8	3	7	0.074	8	3	7







**Table 9. Annexations, incorporations and other municipal boundary changes approved by OFM (continued)**

<b>County Municipality</b>	<b>Boundary Changes: April 2, 2020 – April 1, 2023</b>				<b>Boundary Changes: April 2, 2022 – April 1, 2023</b>			
	<b>Area (sq mi)</b>	<b>Housing Units</b>		<b>Pop. Total</b>	<b>Area (sq mi)</b>	<b>Housing Units</b>		<b>Pop. Total</b>
		<b>Total</b>	<b>Occ.</b>			<b>Total</b>	<b>Occ.</b>	
<b>Whitman continued</b>								
LaCrosse	0	0	0	0	0	0	0	0
Lamont	0	0	0	0	0	0	0	0
Malden	0	0	0	0	0	0	0	0
Oakesdale	0	0	0	0	0	0	0	0
Palouse	0	0	0	0	0	0	0	0
Pullman	0.186	1	1	4	0	0	0	0
Rosalia	0	0	0	0	0	0	0	0
St. John	0	0	0	0	0	0	0	0
Tekoa	0	0	0	0	0	0	0	0
Uniontown	0	0	0	0	0	0	0	0
<b>Yakima</b>	<b>0.263</b>	<b>20</b>	<b>19</b>	<b>42</b>	<b>0.232</b>	<b>20</b>	<b>19</b>	<b>42</b>
Grandview	0.152	17	16	33	0.121	17	16	33
Granger	0	0	0	0	0	0	0	0
Harrah	0	0	0	0	0	0	0	0
Mabton	0	0	0	0	0	0	0	0
Moxee	0	0	0	0	0	0	0	0
Naches	0	0	0	0	0	0	0	0
Selah	0	0	0	0	0	0	0	0
Sunnyside	0.019	1	1	5	0.019	1	1	5
Tieton	0	0	0	0	0	0	0	0
Toppenish	0.038	0	0	0	0.038	0	0	0
Union Gap	0	0	0	0	0	0	0	0
Wapato	0	0	0	0	0	0	0	0
Yakima	0.054	2	2	4	0.054	2	2	4
Zillah	0	0	0	0	0	0	0	0
<b>Washington</b>	<b>27.508</b>	<b>5802</b>	<b>5570</b>	<b>14938</b>	<b>12.718</b>	<b>1286</b>	<b>1208</b>	<b>3170</b>

- Notes:
- All boundary changes are due to annexation, deannexation, boundary line adjustment or incorporation. Unless otherwise noted, the source is annexation (annexation, deannexation, boundary line adjustment), not incorporation.
  - “Annex. Parcels” refers to the number of noncontiguous areas annexed. Noncontiguous areas can be annexed under a single ordinance.
  - “Area” can sometimes be negative due to deannexation or boundary line adjustment.
  - Areas less than 0.0005 square miles are shown as 0.000 square miles.
  - Abbreviations: Annex. – annexation” sq mi – square miles; Occ. – occupied; Pop. – population

**Table 10. Population age 65 years and over by county**

County	Census					Estimate					Percent of 2022 Pop.			
	2010	2011	2012	2013	2014	2015	2016	2017	2018	2019		2020	2021	2022
Washington	827,677	852,414	895,631	939,494	982,838	1,027,655	1,073,339	1,121,334	1,173,705	1,226,458	1,253,785	1,301,526	1,347,567	17.55
Adams	1,915	1,883	2,147	1,936	1,957	1,989	2,035	2,096	2,199	2,257	2,604	2,677	2,745	12.95
Asotin	4,172	4,214	4,329	4,449	4,600	4,687	4,835	5,028	5,137	5,303	5,463	5,692	5,914	26.11
Benton	20,586	21,166	22,219	23,531	24,767	26,060	27,171	28,789	30,371	31,803	32,603	33,981	35,323	16.39
Chelan	11,175	11,429	11,887	12,395	12,874	13,433	13,960	14,619	15,267	15,934	16,321	16,966	17,590	21.58
Clallam	17,189	17,486	18,139	18,661	19,390	20,140	21,025	22,075	23,245	24,239	24,979	25,914	26,813	34.34
Clark	48,710	50,785	54,246	57,495	61,114	64,510	68,013	71,834	76,035	80,067	82,738	86,375	89,933	17.05
Columbia	937	933	941	1,014	1,047	1,067	1,107	1,120	1,161	1,180	1,138	1,160	1,180	29.87
Cowlitz	15,805	16,249	17,207	17,791	18,376	19,014	19,652	20,455	21,238	22,070	22,897	23,635	24,333	21.53
Douglas	5,443	5,536	5,604	5,980	6,247	6,604	6,861	7,132	7,379	7,685	7,694	8,020	8,338	18.74
Ferry	1,428	1,457	1,337	1,615	1,680	1,761	1,892	2,007	2,121	2,216	1,967	2,052	2,135	29.25
Franklin	5,696	5,928	6,158	6,579	6,855	7,244	7,628	7,958	8,477	9,038	9,261	9,648	10,025	9.92
Garfield	506	505	542	505	530	544	561	578	582	610	714	715	714	31.04
Grant	10,531	10,686	10,879	11,314	11,686	12,024	12,422	12,906	13,387	13,981	14,120	14,674	15,209	14.72
Grays Harbor	11,849	12,027	12,387	12,834	13,317	13,855	14,381	15,161	15,913	16,781	17,244	18,005	18,750	24.35
Island	14,439	14,948	15,836	16,672	17,601	18,506	19,442	20,512	21,645	22,632	23,194	24,298	25,387	28.80
Jefferson	7,842	8,101	8,437	9,041	9,483	10,078	10,675	11,275	11,950	12,494	12,561	13,186	13,806	41.30
King	210,679	217,675	229,899	240,120	250,603	260,883	270,913	279,486	289,215	299,374	304,253	313,098	321,347	13.69
Kitsap	33,296	34,468	36,456	38,343	40,417	42,492	44,747	46,990	49,250	51,837	53,159	55,531	57,855	20.43
Kittitas	5,212	5,383	5,696	5,958	6,167	6,506	6,931	7,301	7,697	8,079	8,319	8,733	9,143	19.33
Klickitat	3,625	3,768	3,817	4,173	4,367	4,534	4,799	5,012	5,188	5,425	5,404	5,639	5,869	25.24
Lewis	13,076	13,252	13,844	14,099	14,745	15,350	15,932	16,642	17,246	18,064	18,556	19,182	19,776	23.52
Lincoln	2,197	2,226	2,362	2,345	2,435	2,532	2,588	2,652	2,732	2,886	3,058	3,181	3,301	29.67
Mason	11,112	11,412	11,715	12,349	12,807	13,270	13,894	14,482	15,182	15,938	15,922	16,716	17,504	26.13
Okanogan	7,070	7,180	7,641	7,876	8,102	8,418	8,633	8,882	9,252	9,670	10,010	10,432	10,843	25.22
Pacific	5,183	5,196	5,637	5,561	5,694	5,853	6,080	6,413	6,722	7,168	7,553	8,118	8,478	35.66
Pend Oreille	2,485	2,572	2,621	2,847	2,982	3,104	3,211	3,392	3,565	3,727	3,678	3,851	4,021	29.30
Pierce	87,785	90,251	94,479	99,622	104,418	109,356	114,235	119,326	125,306	130,990	133,611	139,002	144,227	15.24
San Juan	3,657	3,837	4,070	4,346	4,630	4,911	5,130	5,405	5,689	5,955	6,069	6,385	6,699	36.51
Skagit	18,876	19,452	20,305	21,288	22,186	23,384	24,459	25,799	27,194	28,497	29,356	30,504	31,613	23.95
Skamania	1,596	1,659	1,538	1,849	1,953	2,022	2,132	2,266	2,384	2,532	2,243	2,345	2,445	20.38
Snohomish	73,544	76,581	80,862	86,315	90,721	95,425	100,466	105,951	111,599	116,950	119,536	124,639	129,616	15.08
Spokane	60,969	62,213	65,724	68,026	70,990	74,210	77,370	81,149	85,234	89,393	92,963	96,663	100,244	18.08
Stevens	7,516	7,739	7,626	8,540	8,969	9,324	9,746	10,195	10,677	11,185	10,417	10,975	11,532	24.35
Thurston	32,764	33,810	35,610	37,936	39,879	42,261	44,784	47,479	50,277	53,116	54,510	56,825	59,082	19.47
Wahkiakum	1,015	1,053	1,089	1,174	1,209	1,242	1,271	1,303	1,355	1,433	1,457	1,520	1,581	34.75
Walla Walla	8,778	8,943	9,231	9,504	9,830	10,148	10,414	10,846	11,328	11,863	12,246	12,698	13,132	20.81
Whatcom	26,640	27,503	29,037	30,375	32,082	33,633	35,634	37,494	39,665	41,807	42,726	44,369	45,953	19.49
Whitman	4,257	4,268	4,432	4,496	4,616	4,743	4,854	5,001	5,154	5,360	5,524	5,681	5,827	12.11
Yakima	28,122	28,640	29,645	30,540	31,512	32,538	33,456	34,323	35,687	36,919	37,517	38,441	39,284	15.04

- Notes:
- The county-level population estimates of the 65 and over population are based on a method that uses decennial census, Medicare and Medicaid data. These figures will not match the 65 and over population found in OFM's estimates of population by age, sex and race which are produced using a different methodology.
  - Totals may not add due to rounding.

## Part 3

### Supplemental population information

Additional information about the development of annual population estimates can be found in this chapter. The information includes state statutes related to the Office of Financial Management's official April 1 population determinations, the Small Area Estimate Program, how to access OFM population data products, State Data Center and Business and Industry Data Center contacts, and acknowledgment of the organizations that provide OFM with data.

#### Washington statutes related to the population estimates program

Population estimates for the state, counties, cities and towns and their use are governed by a number of statutes:

*RCW 43.41.110*: Assigns OFM duties related to population and annexation.

*RCW 43.62.030*: Requires annual estimates as of April 1 of each year for cities and towns. Used for allocation of specific funds the following Jan. 1. Only persons meeting resident criteria are to be included in the population estimates.

*RCW 43.62.035*: Requires annual estimates as of April 1 of each year for all counties. Used for allocation of specific funds in July of the same year.

*RCW 43.62.040*: Requires agencies, cities, towns and counties to furnish OFM whatever aid is needed in performance of its population studies. OFM's population determinations are final and conclusive.

#### Population estimates development

Population estimates represent the resident population as defined by the U.S. Census Bureau. This includes persons in housing units, military personnel and their dependents, persons living in correctional institutions and persons living in residential care facilities. College students are considered residents of the place where they live while attending school. Seasonal populations, such as vacationers or migrant farmworkers, are counted at their usual place of residence. Persons with no usual place of residence are counted where they are located on April 1.

The estimates are developed as accurately as possible from standard and tested methods. The specific procedures used to develop estimates depend on the availability of state and local area data.

State estimates are developed by a component method. The *component method* uses three basic demographic indicators — births, deaths and migration — to produce population estimates. The population change is the result of subtracting deaths and then adding births and migration to the base year population. Vital statistics data are obtained from the Washington State Department of Health. The migration estimate is based on administrative data sets such as school enrollment and tax filers' data which reflect the mobility of the population.

County populations are developed by three methods: the component method, ratio correlation and the housing unit method. *Ratio correlation* relates change in the county's share of the state population over a specific 10-year period to changes in the county's share of a set of symptomatic data over the same time period. The current equation contains school enrollment, voter registrations, auto

registrations, housing, births and deaths to persons age 65 or over. Changes in the symptomatic data are then tracked annually through the current decade to estimate population. The *housing unit method* estimates population on the basis of housing change and assumptions about occupancy rates and average household size.

City/town populations include both estimates and actual counts. A small number of cities/towns census their entire population each year. The housing unit method is used by OFM to prepare population estimates for the remaining cities. City population estimates are determined based on changes in the housing stock and counts of persons residing in group quarters facilities. The household population is estimated based on knowledge of housing unit change since the last census, occupancy rates and average household size. The population residing in group quarters facilities and from recent annexations is subsequently added to the estimate of household population to derive the final estimate. The reliability of the housing unit estimation method depends on accurately determining changes to the housing stock, the occupancy rate and average household size.

### **Small area estimates program**

OFM's annual city and county population determinations satisfy a variety of needs related to planning and program administration. However, population and housing estimates are frequently required for areas that do not coincide with city or county boundaries. The Small Area Estimate Program was developed to produce population and housing estimates for such areas while maintaining as much consistency as possible with OFM's city and county estimates.

The SAEP produces a consistent set of small area population and housing data for statewide applications. SAEP estimates are generated for census areas, "special areas" that are statutorily required and other areas of statewide significance. Small areas are defined as geographic areas below the level of the state that may be coincident with the boundaries of U.S. Census Bureau geographic entities.

SAEP estimates are not the official state population estimates used for revenue distribution and program administration for cities/towns and counties. Although city/town and county population totals from the state's official population estimates program serve as control numbers, the SAEP targets different geographic areas and therefore has different data and methodological requirements.

The SAEP takes OFM's official April 1 city/town and county population and housing estimates and distributes these to census blocks based on a variety of information, including residential building permits, assessor records, postal delivery statistics and decennial census information.

The SAEP uses area-weighted and parcel point-weighted areal interpolation techniques to develop estimates for geographic areas that are not coincident with census blocks. This strategy takes advantage of more geographically precise information where it is available.

SAEP data products are summarized by geography and available in tabular and GIS shapefile format. Each SAEP data product contains information on the following demographic measures: total population, household population, group quarters population, total housing units and occupied housing units. Estimates for the following geographic areas are provided:

- census block groups
- census tracts
- census designated places
- congressional districts
- fire protection districts
- legislative districts

- public hospital districts
- Public Use Microdata Areas
- school districts
- selected islands
- tribal areas
- urban areas
- urban growth areas
- Water Resource Inventory Areas
- ZIP Code Tabulation Areas

### **Small area demographic estimates**

OFM's Small Area Demographic Estimates model produces a consistent set of small area population estimates by the following characteristics: age, sex, race and ethnicity.

The SADE model uses using an Iterative Proportional Fitting procedure. IPF is a mathematical scaling procedure that converges the population estimates to constraining totals developed from multiple sources. To begin, an IPF procedure is executed to allocate census 2010 modified-age-race-sex data at the county level to census blocks. To move one year forward, IPF gradually adjusts the benchmark estimate through repeated calculations to fit the various constraints. These constraints, also known as controls, are OFM's annual total population by census block, county-level population estimates by age and sex, and county-level estimates by race and ethnicity.

SADE estimates use the characteristic proportions from the 2010 Census MARS data. These proportions don't reflect aging or migration of the small area population, so SADE data shouldn't be used to examine trends in small geographic areas. We suggest using SADE data at geographies more or less on the same scale as census tracts, about 5,000 people per geography. Estimates for the following geographic areas are provided:

- census tract
- congressional district
- county
- legislative district
- school district
- state

There are three tables for each geography representing the total population, the Hispanic population and the non-Hispanic population. The data are tabulated by OMB 1997 race category, sex and five-year age groups.

### **Population data products**

OFM produces a number of population data products. To find frequently requested population items, please see <https://www.ofm.wa.gov/sites/default/files/public/dataresearch/pop/key2pop.xlsx> or click on one of the links below. You can subscribe to GovDelivery to receive email or text notifications about updated OFM data products at [https://public.govdelivery.com/accounts/WAGOV/subscriber/new?qsp=WAGOV\\_39](https://public.govdelivery.com/accounts/WAGOV/subscriber/new?qsp=WAGOV_39).

Estimates:

- [age, sex and race and Hispanic origin](#)
- [official April 1 population estimates](#)
- [small areas](#)
- [special areas](#)

#### Projections:

- [age, sex and race and Hispanic origin](#)
- [Growth Management Act county projections](#)
- [state population forecast](#)

#### Other products:

- [American Community Survey](#)
- [annexations](#)
- [decennial census](#)
- [population density](#)
- [GIS data](#)

### **Washington State Data Center and Business and Industry Data Center**

The Washington State Data Center and Business and Industry Data Center are federal-state cooperative programs sponsored by the U.S. Census Bureau. OFM is the agency responsible for administering these programs in Washington.

A list of the Washington SDC/BIDC coordinating agencies and affiliate members is provided below. These organizations and their contact persons play an important role in the dissemination of census information. Many of the larger participating universities, regional councils of governments and county planning agencies publish census information targeting the needs of local constituents. Many of these same organizations can also assist with data requests.

#### **Lead agency**

[Office of Financial Management](#)

#### **U.S. Census Bureau**

[Census Bureau Regional Office](#)

#### **Coordinating agencies**

[Central Washington University](#)  
[Employment Security Department](#)  
[Puget Sound Regional Council](#)  
[University of Washington](#)  
[Washington State Library](#)  
[Washington State University](#)  
[Western Washington University](#)

#### **Affiliates**

[Benton-Franklin Council of Governments](#)  
[City of Bellevue](#)  
[Chelan County](#)  
[Clark County](#)  
[Cowlitz-Wahkiakum Council of Governments](#)  
[Eastern Washington University](#)  
[Grant County Economic Development Council](#)  
[Grays Harbor Council of Governments](#)  
[Grays Harbor County](#)



King County Government  
King County Library System  
Seattle City Government  
Seattle Public Library  
Spokane Regional Transportation Council  
Thurston Regional Planning Council  
Tri-County Economic Development District  
Washington State Department of Health  
Whatcom Council of Governments  
Yakima Valley Conference of Governments

## **Acknowledgments**

OFM acknowledges the following entities for providing data and/or assistance in support of the population estimates program:

- Center for Health Statistics, Department of Health for supplying vital statistics data.
- Office of Research and Data Analysis, Department of Social and Health Services for providing institutional population counts.
- Department of Veterans Affairs for providing veteran institutional counts.
- Department of Licensing for providing driver's license and vehicle registration data.
- Office of Superintendent of Public Instruction for providing student enrollment counts.
- Employment Security Department for providing state employment data.
- Puget Sound Regional Council for providing building permit information.
- City and county planners/staff for providing building permit and other information used in the development of April 1 population estimates.
- Housing directors at colleges and universities for submitting April 1 dormitory counts.
- Armed forces personnel at major military installations for contributing data on resident military population counts.
- Municipal Research and Services Center for providing technical assistance/resources related to annexation and revenue distribution.
- Agency personnel in other states who provide reciprocal data on interstate movements.



Washington State Office of Financial Management  
PO Box 43113  
Olympia, WA 98504-3113 • 360-902-0555